

Lars Petter Hagen:

# Sørgemarsj over Edvard Grieg – versjon for kammerensemble

## Programkommentar:

I 1866 skriver Grieg sin berømte sørgemarsj over vennen Rikard Nordraak. Senere skriver han følgende om Nordraaks betydning for hans kunstneriske utvikling:

*"Jeg ville gjerne være ikke nettopp norsk, enda mindre norsk-norsk – men – meg selv. Jeg ville gjerne finne uttrykk for noe av det beste av meg, som lå 1000 mil borte fra Leipzig og dens atmosfære, men at dette beste lå i kjærligheten til fedrelandet og sansen for den store melankolske vestlandsnatur, det visste jeg ikke, og hadde aldri – kanskje – fått det å vite om jeg ikke gjennom Nordraak var blitt ledet til selvbetraktning.*

Sørgemarsj over Edvard Grieg er i all ubeskjedenhet min variant av samme prosjekt. De 100 årene som har gått mellom Griegs bortgang og min sørgemarsj har nok resultert i enkelte ulikheter, men mest påfallende er likevel alle likhetene. Betyr dette at det er jeg som er reaksjonær, eller at kunstens problemstillinger er universelle og evig-aktuelle? Det siste er selvsagt ikke tilfellet. I likhet med Grieg er heller ikke jeg spesielt opptatt av å være norsk-norsk, men er derimot veldig opptatt av melankoli. Det eneste jeg ikke deler med Grieg er forsøket på "å være meg selv", og langt mindre "finne uttrykk for noe av det beste i meg".

Sørgemarsj over Edvard Grieg er litt ambivalent – og ikke altfor lang. Den er en litt usikker hommage i form av en ruin. Et keitete kjærlighetsdikt og et minnesmerke over en tradisjon – ledet til selvbetraktning gjennom Edvard Grieg.



**NB**  
noter

*This music is copyright protected*

# Sørgemarsj over Edvard Grieg

– version for chamber ensemble

Lars Petter Hagen

**Tenuto**  
♩=70

**Alto Flute**  
*pp*

**Clarinet in B♭**  
*pp*

**Percussion**  
Vib  
Bowed  
*pp* *l.v. Sempre*

**Piano**  
*pp* *l.v. Sempre*

**Violin 1**  
Open strings when possible  
*pp*

**Violin 2**

**Viola**  
Open strings when possible  
*pp*

**Violoncello**  
*pp*

**Double Bass**

**Tempo markings:** *poco rit.*, **A tempo**

**Watermark:** NB noter This music is copyright protected

6 **Poco meno**

Fl.

Cl.

Perc.

Pno.

Vln. 1

Vln. 2

Vla.

Vc.

Db.

Bowed Crot.

*This music is copyright protected*

11 **poco rit.** **Tempo 1** ♩=70

Fl. *mf*

Cl. *mf*

Perc. *mf*

Pno. *mf*

Vln. 1 **poco rit.** **Tempo 1** ♩=70

Vln. 2

Vla. *mf*

Vc. *mf*

Db.

This music is copyright protected

Score for Flute, Clarinet, Percussion, Piano, Violin 1, Violin 2, Viola, Violoncello, and Double Bass. The score includes performance markings such as *mf* and tempo changes from *poco rit.* to **Tempo 1** (♩=70). The music features complex rhythmic patterns, including triplets and sixteenth-note passages. A large watermark 'NB printer' is overlaid on the score.

17

Fl.

pp

Cl.

Perc.

Pno.

Vln. 1

Vln. 2

Vla.

Vc.

Db.

This music is copyright protected

23 52

Fl.

Cl.

Perc.

Pno.

Vln. 1

Vln. 2

Vla.

Vc.

Db.

pp

pp

pp

pp

The musical score for page 5, measures 23 to 52, features the following instruments and parts:

- Flute (Fl.):** Measure 23 starts with a half rest, followed by notes G4, A4, and B4. Measure 24 contains a half rest, then a half note G4. Measure 25 has a half rest, and measure 26 contains a half note G4. Measures 27-31 are rests. Measures 32-33 feature a half note G4. Measures 34-35 are rests. Measure 36 has a half note G4. Measure 37 is a rest. Measures 38-42 are rests. Measure 43 contains a half note G4. Measure 44 is a rest. Measures 45-49 are rests. Measure 50 has a half note G4. Measure 51 is a rest. Measure 52 contains a half note G4. Dynamics: *pp* at measures 36, 43, and 50.
- Clarinet (Cl.):** Measure 23 has a half note G3. Measure 24 has a half note G3. Measure 25 has a half note G3. Measure 26 has a half note G3. Measure 27 has a half note G3. Measure 28 has a half note G3. Measure 29 has a half note G3. Measure 30 has a half note G3. Measure 31 has a half note G3. Measures 32-35 are rests. Measure 36 has a half note G3. Measure 37 has a half note G3. Measure 38 has a half note G3. Measure 39 has a half note G3. Measure 40 has a half note G3. Measure 41 has a half note G3. Measure 42 has a half note G3. Measures 43-49 are rests. Measure 50 has a half note G3. Measure 51 has a half note G3. Measure 52 has a half note G3. Dynamics: *pp* at measures 36, 43, and 50.
- Percussion (Perc.):** Measures 23-24 are rests. Measure 25 has a quarter note G3. Measure 26 has a quarter note G3. Measure 27 has a quarter note G3. Measure 28 has a quarter note G3. Measure 29 has a quarter note G3. Measure 30 has a quarter note G3. Measure 31 has a quarter note G3. Measures 32-35 are rests. Measure 36 has a quarter note G3. Measure 37 has a quarter note G3. Measure 38 has a quarter note G3. Measure 39 has a quarter note G3. Measure 40 has a quarter note G3. Measure 41 has a quarter note G3. Measure 42 has a quarter note G3. Measures 43-49 are rests. Measure 50 has a quarter note G3. Measure 51 has a quarter note G3. Measure 52 has a quarter note G3. Dynamics: *pp* at measures 36, 43, and 50.
- Piano (Pno.):** Measure 23 has a quarter note G3. Measure 24 has a quarter note G3. Measure 25 has a quarter note G3. Measure 26 has a quarter note G3. Measure 27 has a quarter note G3. Measure 28 has a quarter note G3. Measure 29 has a quarter note G3. Measure 30 has a quarter note G3. Measure 31 has a quarter note G3. Measures 32-35 are rests. Measure 36 has a quarter note G3. Measure 37 has a quarter note G3. Measure 38 has a quarter note G3. Measure 39 has a quarter note G3. Measure 40 has a quarter note G3. Measure 41 has a quarter note G3. Measure 42 has a quarter note G3. Measures 43-49 are rests. Measure 50 has a quarter note G3. Measure 51 has a quarter note G3. Measure 52 has a quarter note G3. Dynamics: *pp* at measures 36, 43, and 50.
- Violin 1 (Vln. 1):** Measures 23-24 have a half note G3. Measure 25 has a half note G3. Measure 26 has a half note G3. Measure 27 has a half note G3. Measure 28 has a half note G3. Measure 29 has a half note G3. Measure 30 has a half note G3. Measure 31 has a half note G3. Measures 32-35 are rests. Measure 36 has a half note G3. Measure 37 has a half note G3. Measure 38 has a half note G3. Measure 39 has a half note G3. Measure 40 has a half note G3. Measure 41 has a half note G3. Measure 42 has a half note G3. Measures 43-49 are rests. Measure 50 has a half note G3. Measure 51 has a half note G3. Measure 52 has a half note G3. Dynamics: *pp* at measures 36, 43, and 50.
- Violin 2 (Vln. 2):** Measures 23-24 have a half note G3. Measure 25 has a half note G3. Measure 26 has a half note G3. Measure 27 has a half note G3. Measure 28 has a half note G3. Measure 29 has a half note G3. Measure 30 has a half note G3. Measure 31 has a half note G3. Measures 32-35 are rests. Measure 36 has a half note G3. Measure 37 has a half note G3. Measure 38 has a half note G3. Measure 39 has a half note G3. Measure 40 has a half note G3. Measure 41 has a half note G3. Measure 42 has a half note G3. Measures 43-49 are rests. Measure 50 has a half note G3. Measure 51 has a half note G3. Measure 52 has a half note G3. Dynamics: *pp* at measures 36, 43, and 50.
- Viola (Vla.):** Measures 23-24 have a half note G3. Measure 25 has a half note G3. Measure 26 has a half note G3. Measure 27 has a half note G3. Measure 28 has a half note G3. Measure 29 has a half note G3. Measure 30 has a half note G3. Measure 31 has a half note G3. Measures 32-35 are rests. Measure 36 has a half note G3. Measure 37 has a half note G3. Measure 38 has a half note G3. Measure 39 has a half note G3. Measure 40 has a half note G3. Measure 41 has a half note G3. Measure 42 has a half note G3. Measures 43-49 are rests. Measure 50 has a half note G3. Measure 51 has a half note G3. Measure 52 has a half note G3. Dynamics: *pp* at measures 36, 43, and 50.
- Violoncello (Vc.):** Measures 23-24 have a half note G3. Measure 25 has a half note G3. Measure 26 has a half note G3. Measure 27 has a half note G3. Measure 28 has a half note G3. Measure 29 has a half note G3. Measure 30 has a half note G3. Measure 31 has a half note G3. Measures 32-35 are rests. Measure 36 has a half note G3. Measure 37 has a half note G3. Measure 38 has a half note G3. Measure 39 has a half note G3. Measure 40 has a half note G3. Measure 41 has a half note G3. Measure 42 has a half note G3. Measures 43-49 are rests. Measure 50 has a half note G3. Measure 51 has a half note G3. Measure 52 has a half note G3. Dynamics: *pp* at measures 36, 43, and 50.
- Double Bass (Db.):** Measures 23-24 have a half note G3. Measure 25 has a half note G3. Measure 26 has a half note G3. Measure 27 has a half note G3. Measure 28 has a half note G3. Measure 29 has a half note G3. Measure 30 has a half note G3. Measure 31 has a half note G3. Measures 32-35 are rests. Measure 36 has a half note G3. Measure 37 has a half note G3. Measure 38 has a half note G3. Measure 39 has a half note G3. Measure 40 has a half note G3. Measure 41 has a half note G3. Measure 42 has a half note G3. Measures 43-49 are rests. Measure 50 has a half note G3. Measure 51 has a half note G3. Measure 52 has a half note G3. Dynamics: *pp* at measures 36, 43, and 50.

A watermark "NB noter" and "This music is copyright protected" is visible diagonally across the center of the page.

28

Fl.

Cl.

Perc.

Pno.

Vln. 1

Vln. 2

Vla.

Vc.

Db.

NB  
noter  
This music is copyright protected



33

Fl. *ppp*

Cl. *ppp*

Perc. Vib. bowed *ppp*

Pno.

Vln. 1 *ppp*

Vln. 2 *ppp*

Vla. *ppp*

Vc. *ppp*

Db. *ppp*

40

Fl.

Cl.

Perc.

Pno.

Vln. 1

Vln. 2

Vla.

Vc.

Db.

1

2

1

2

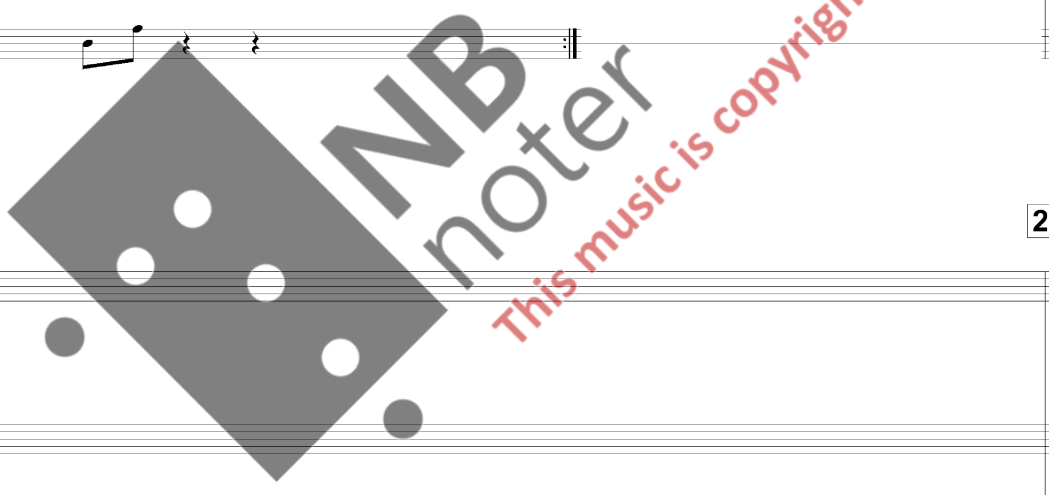
Freely: *mp* Repeat ad lib.

Vibraphone, medium hard mallets freely: *mp* Repeat ad lib.

*mp*

*mp*

Double Bass player presses play on portable CD player, and holds it with both hands in front his/hers chest until soundtrack ends



50

Fl.

Cl.

Perc.

Pno.

Vln. 1

Vln. 2

Vla.

Vc.

Db.

3

4

Repeat ad lib.

Repeat until soundtrack ends

I.v.

Repeat until soundtrack ends

Repeat until soundtrack ends

3

4

Soundtrack ends

Musical score page 10, measures 62-65. The score includes parts for Flute (Fl.), Clarinet (Cl.), Percussion (Perc.), Piano (Pno.), Violin 1 (Vln. 1), Violin 2 (Vln. 2), Viola (Vla.), Violoncello (Vc.), and Double Bass (Db.).

Tempo: ♩ = 52

Measure numbers: 62, 63, 64, 65

Measure 62: Flute (pp), Clarinet (pp), Percussion (Chimes 3, vib. mallets, i.v. sempre, ppp), Piano (i.v. sempre, pp), Violin 1 (con sord., pp), Violin 2 (con sord., pp), Viola (con sord.), Violoncello (con sord., pp), Double Bass (con sord., pp).

Measure 63: Flute (pp), Clarinet (pp), Percussion (i.v. sempre), Piano (pp), Violin 1 (con sord., pp), Violin 2 (con sord., pp), Viola (con sord.), Violoncello (con sord., pp), Double Bass (con sord., pp).

Measure 64: Flute (pp), Clarinet (pp), Percussion (i.v. sempre), Piano (pp), Violin 1 (con sord., pp), Violin 2 (con sord., pp), Viola (con sord.), Violoncello (con sord., pp), Double Bass (con sord., pp).

Measure 65: Flute (ppp), Clarinet (ppp), Percussion (i.v. sempre), Piano (ppp), Violin 1 (con sord.), Violin 2 (con sord.), Viola (con sord.), Violoncello (con sord., pp), Double Bass (ppp).

Dynamic markings: pp, ppp, con sord., i.v. sempre.

Instrument abbreviations: Fl., Cl., Perc., Pno., Vln. 1, Vln. 2, Vla., Vc., Db.

Watermark: NB noter, This music is copyright protected.

69

Fl.

Cl.

Perc.

Pno.

Vln. 1

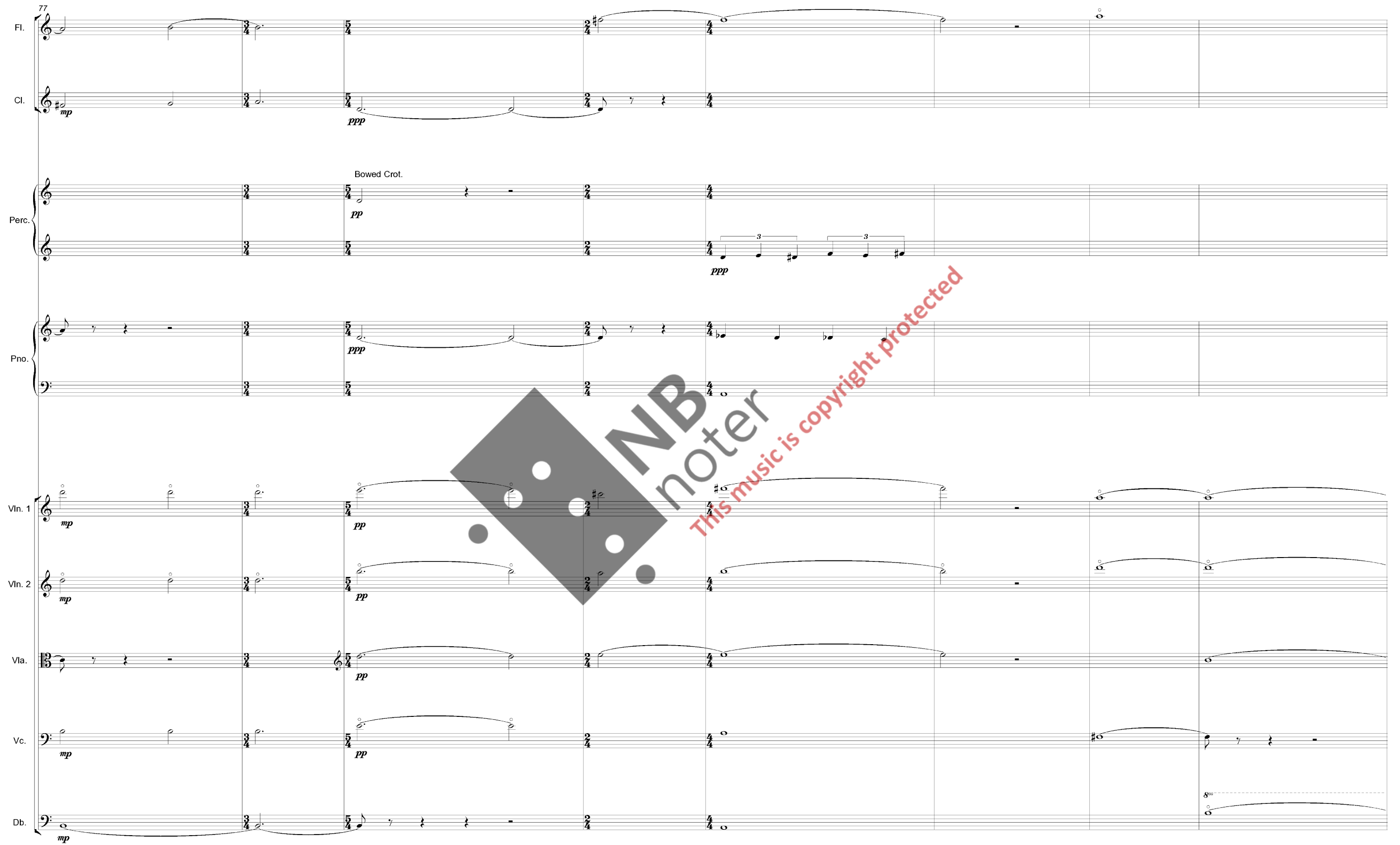
Vln. 2

Vla.

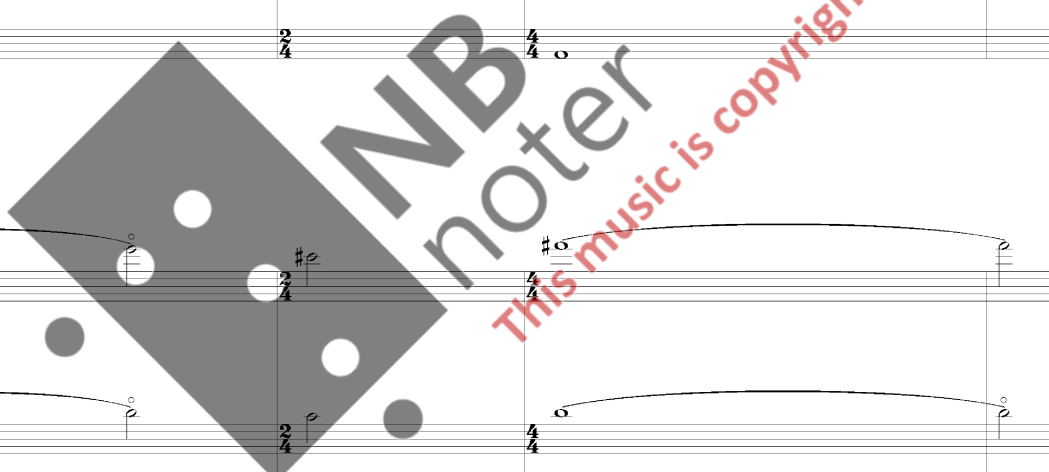
Vc.

Db.

This music is copyright protected



77  
Fl. *mp*  
Cl. *mp*  
Perc. *pp* Bowed Crot. *pp*  
Pno. *ppp*  
Vln. 1 *mp*  
Vln. 2 *mp*  
Vla. *pp*  
Vc. *mp*  
Db. *mp*



85

Fl.

Cl.

Perc.

Pno.

Vln. 1

Vln. 2

Vla.

Vc.

Db.

The musical score for page 13, measures 85-90, features the following parts and notation:

- Flute (Fl.):** Measures 85-86 contain a half note G4 with a fermata. Measures 87-88 are rests. Measures 89-90 contain a half note G4 with a fermata.
- Clarinet (Cl.):** Measures 85-86 contain a half note G3 with a fermata. Measures 87-88 are rests. Measures 89-90 contain a half note G3 with a fermata.
- Percussion (Perc.):** Measures 85-86 are rests. Measures 87-88 contain a quarter note G4. Measures 89-90 are rests.
- Piano (Pno.):** Measures 85-86 are rests. Measures 87-88 contain a quarter note G4. Measures 89-90 are rests.
- Violin 1 (Vln. 1):** Measures 85-86 contain a half note G4 with a fermata. Measures 87-88 are rests. Measures 89-90 contain a half note G4 with a fermata.
- Violin 2 (Vln. 2):** Measures 85-86 contain a half note G4 with a fermata. Measures 87-88 are rests. Measures 89-90 contain a half note G4 with a fermata.
- Viola (Vla.):** Measures 85-86 are rests. Measures 87-88 contain a half note G4 with a fermata. Measures 89-90 contain a half note G4 with a fermata.
- Violoncello (Vc.):** Measures 85-86 contain a half note G3 with a fermata. Measures 87-88 are rests. Measures 89-90 contain a half note G3 with a fermata.
- Double Bass (Db.):** Measures 85-86 contain a half note G3 with a fermata. Measures 87-88 are rests. Measures 89-90 contain a half note G3 with a fermata.

85

86

87

88

89

90

**NB noter**  
*This music is copyright protected*

92

Fl.

Cl.

Perc.

Pno.

Vln. 1

Vln. 2

Vla.

Vc.

Db.

This music is copyright protected



99

Fl. Air tone *mf* > *ppp* tongue click

Cl. Air tone *pp* tongue click

Perc. Senza Misura Woodblock: *pp* *ppp*

Pno. Senza Misura

Vln. 1 jeté

Vln. 2

Vla. jeté

Vc.

Db.