

R. GUPTA:

"PRELUDIUM"^u

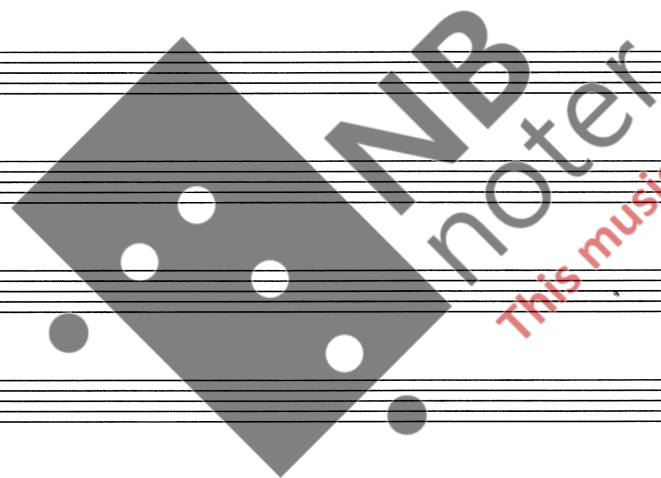
- PRELUDIUM

- INTERMESSO I

- INTERMEZZO II

- POSTLUDIUM

FOR 3 SOPRANOS
ACCORDION & PIANO



SKREVET PÅ BESTILLING
FRA DIPLOMSTUDENTENE
VED NORGES MUSIKKHØYSKOLE
VÅREN 1989



NB
noter

This music is copyright protected

"PRELUDIUM"

Raf. Gupta

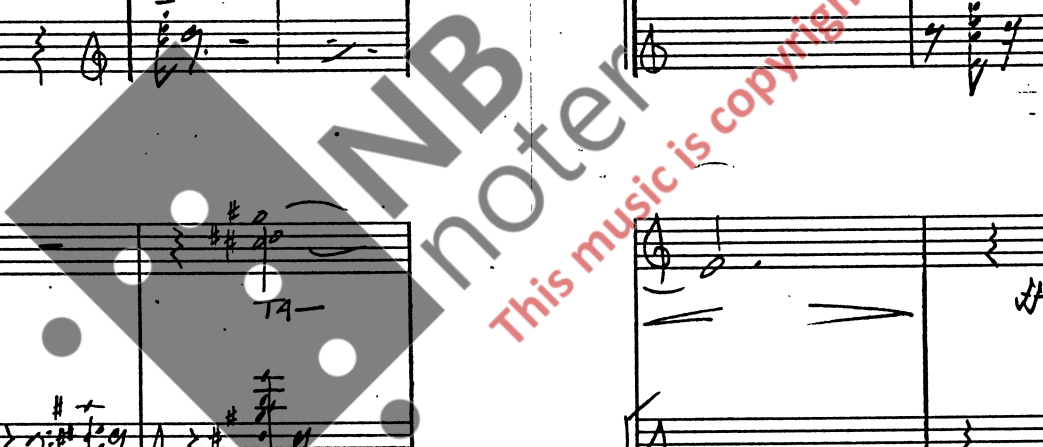
a3 LA -

Handwritten musical score for the first system, featuring three staves labeled **FAH**, **ACC.**, and **PNO**. The notation includes complex rhythmic patterns with triplets and slurs, and includes handwritten annotations such as "DI", "HO", and "BA".

Handwritten musical score for the second system, featuring three staves labeled **ACC.** and **PNO**. This system includes vocal lyrics: "TO DI" and "DA -". The notation features complex rhythmic patterns and includes annotations like "BA" and "Loco".

Handwritten musical score for the third system, featuring three staves labeled **FAH**, **ACC.**, and **PNO**. The notation includes complex rhythmic patterns and includes annotations such as "DI", "BA", and "RA -".

Handwritten musical score for the fourth system, featuring three staves labeled **ACC.** and **PNO**. This system includes vocal lyrics: "DA -" and "DI". The notation features complex rhythmic patterns and includes annotations like "BA" and "Loco".



Handwritten musical score for the first system, consisting of five staves. The notation includes various notes, rests, and dynamic markings. The first staff has a treble clef and contains notes with a slur and a fermata. The second staff has a bass clef and contains notes with a slur and a fermata. The third staff has a bass clef and contains notes with a slur and a fermata. The fourth staff has a bass clef and contains notes with a slur and a fermata. The fifth staff has a bass clef and contains notes with a slur and a fermata. The score includes the following annotations:

- Staff 1: *LA*, *2*
- Staff 2: *sf*, *2*, *f*, *2*
- Staff 4: *(DAMP WITH FINGER)*
- Staff 5: *8VA BASSO*

2. VOLTA

Handwritten musical score for the second system, consisting of five staves. The notation includes various notes, rests, and dynamic markings. The first staff has a treble clef and contains notes with a slur and a fermata. The second staff has a treble clef and contains notes with a slur and a fermata. The third staff has a treble clef and contains notes with a slur and a fermata. The fourth staff has a bass clef and contains notes with a slur and a fermata. The fifth staff has a bass clef and contains notes with a slur and a fermata. The score includes the following annotations:

- Staff 1: *HP*, *HP*, *HP*
- Staff 2: *(WIND)*
- Staff 5: *(NORMAL)*, *8VA BASSO*

Watermark: NBNoter This music is copyright protected



NB
noter

This music is copyright protected

INTERMEZZO I

ROLF CURTA

4/4

I
II
III

SCHÖN - HEIT

SCHÖN - HEIT

SCHÖN - HEIT

CA. 10x BVA sempre

P (con PED.)

ACC.

PPP

PP

BVA

pp

BAM - BAM BAM

BAM - BA - BAM

I
II
III

SCHÖN - HEIT

SCHÖN - HEIT

SCHÖN - HEIT

SCHÖN - HEIT

SCHÖN - HEIT

sempr

BVA

BVA Bass

ACC.

BVA Bass

bend

- 1 - INTERMEZZO I -

I
 II
 III

— HEIT 'SCHÖN | HEIT 'SCHÖN — BAM-BAM-BAM BAM-BA BAM

SCHÖN — HEIT SCHÖN — HEIT SCHÖN

SCHÖN-HEIT SCHÖN-HEIT SCHÖN-HEIT

PNO

ACC.

VIBRATO DESCEND CHROMATICALLY *ff*

CA. 5x

I
 II
 III

BAM-BAM-BAM BAM-BA BAM BAM-BA BAM

BAM-BAM BAM BAM-BAM BAM ETC.

BAM BAM BAM etc.

PNO

ACC.

5x

pp

ritente

- 2 - - INTERMEZZO I -

INTERMEZZO II

Rolf Gupta

I+II+III

pp

DI GA DO!!

ACC.

STACC.

8VA

I+II+III

ff

pp

DI GA DO

ACC.

8

pp

sf

sf

I

II

III

pp

sf

pp

TA TO TI TA

8VA

10 CA

4/8

p = *f*

p = *f*

p

f

I

II

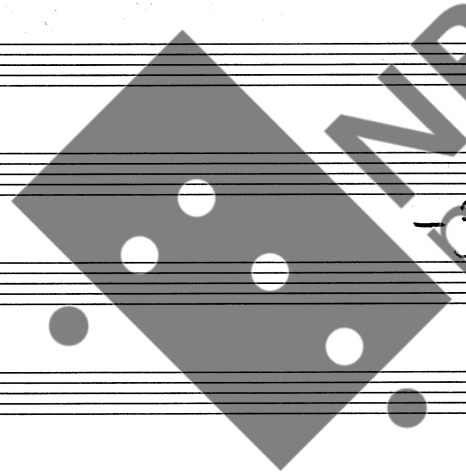
III

FINE

ACC

FINE

Handwritten musical score for 18 staves. The score is divided into two systems. The first system consists of the top six staves, and the second system consists of the bottom six staves. The music is written in treble clef with a 4/4 time signature. The first system includes lyrics: "TAKATAKA DOKO DOKO", "TA WA TA WA DOKO DOKO", and "TAKATAKA DOKO DOKO". Performance markings include "f", "p", "simile", and "WHISPERING)". The second system ends with the instruction "D.C. AL FINE".



NB
Noter

This music is copyright protected

— INTERMEZZO II —

POSTLUDE

SOPR. I
II
III

MI - NO CA BA
MI - BA CA RO BI
MI - BI RO NO MI

simile simile simile

ACC.

PNO. L.V.

ACC.

PNO. L.V.

2. VOLTA dolce I

VIBRATO

L.V.

MI - NO
MI - BA
MI - BI
MI - RO

Handwritten musical score for vocal parts I, II, III and accompaniment (ACC.).

Vocal Lines:

- I:** RO, BA, NO, HI, CA
- II:** CA, BI, MI, CA, BI, MI, RO
- III:** NO, RO, BA, MI, RO

Accompaniment (ACC.): Features rhythmic patterns of notes with stems, some marked with accents and slurs.

Piano (PNO): Empty staff.

Performance Markings: *gliss.* at the end of the first vocal line.

Handwritten musical score for vocal parts and accompaniment.

Vocal Lines:

- I:** NO -
- II:** NO -
- III:** NO -

Accompaniment (ACC.): Includes rhythmic patterns and notes with stems. A section is marked "shiss (Sample)".

Performance Markings: *gliss.*, *>.HM>.*, *LUNGA!*, *(individual breathing)*, *PR*, *note*.