

Cadenza Improvisata/Monogram

for doublebass solo



Verket er en bestilling fra
Nordisk Konservatorieråd

Rolf Gupta

09.1989

Cadenza Improvisata/Monogram: Explanation of signs

C.L. or B.c.l. = Battuto col legno


C.l./Arco = col legno tratto

 = Bartok pizzicato

 = Muffled pizzicato

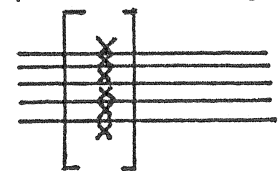
C.l. = b.c.l. on muffled string

+ = Max. bowpressure/min. bowspeed

 = "Flattement" Vibrato with 2 fingers
(not a trill), very wide vibrato

S.P/S.T = Sul ponticello/sul tasto

The tempered whole-tone is divided into 4 parts using 3 types of sharps:



= 6 different positions between s.p. & s.t.
when playing b.c.l.



Duration ca. 9`40

3
4

Handwritten musical notation on a grand staff. The top staff is in treble clef and the bottom in bass clef. The music includes various dynamics such as *sfz*, *mp*, *pp*, and *f*. Performance instructions include *ARCO SP.*, *martellato*, *secco*, *Cil.*, *sal-pont.*, *NORM.*, and *PIZZ.*. There are also markings for *L.V.* and *5*. A tempo marking $\text{♩} = 56 \text{ ca.}$ is present at the beginning.

Handwritten musical notation on a grand staff. The top staff is in treble clef and the bottom in bass clef. Dynamics include *pp*, *mf*, and *f*. Performance instructions include *ARCO*, *PIZZ.*, *S.P.*, and *gliss.*. There are also markings for *3* and *5*.

Handwritten musical notation on a grand staff. The top staff is in treble clef and the bottom in bass clef. Dynamics include *sfz*, *pp*, *mf*, and *f*. Performance instructions include *gliss.*, *stacc.*, *spiccato gliss.*, and *molto sempre ff*. There are also markings for *3*, *7:3*, *4:3*, and *9*.

Handwritten musical notation on a grand staff. The top staff is in treble clef and the bottom in bass clef. Dynamics include *pp*, *mp*, and *f*. Performance instructions include *COLLEGGNO*, *secco poss.*, *PIZZ.*, and *gliss.*. There are also markings for *3*, *12*, *5*, and *5*.

Handwritten musical notation on a grand staff. The top staff is in treble clef and the bottom in bass clef. Dynamics include *mp*, *f*, and *f*. Performance instructions include *secco poss.*, *PIZZ.*, *CL.*, and *S.P.*. There are also markings for *5*, *3*, *7:6*, and *(1"15)*.



Handwritten musical score for guitar, consisting of 18 staves. The score includes various musical notations such as treble and bass clefs, time signatures (3/4, 3:2), and dynamic markings (sfz, pp, p, sf, ppp, s.p., b.c.l.). It features complex rhythmic patterns, including triplets and sixteenth-note runs, and technical instructions like "gliss.", "secco possibile", "Pizz. ARCO", and "simile". The score is marked with a large "NB" and "noter" watermark, along with the text "This music is copyright protected".

Handwritten musical score for measures 7-10. The score is written on two staves (treble and bass clef). Measure 7 features a 9-measure phrase in the bass clef and a 6-measure phrase in the treble clef. Measure 8 continues with similar phrasing. Measure 9 includes a 5-measure phrase in the bass clef and a 5-measure phrase in the treble clef. Measure 10 features a 6-measure phrase in the bass clef and a 5-measure phrase in the treble clef. Performance markings include *sf*, *pp*, *sub. p*, *NORM.*, and *S.P.*. Fingering numbers (5, 6) are present throughout.

Handwritten musical score for measures 17-19. Measure 17 features a 6-measure phrase in the bass clef and a 5-measure phrase in the treble clef. Measure 18 continues with similar phrasing. Measure 19 features a 5-measure phrase in the bass clef and a 6-measure phrase in the treble clef. Performance markings include *sf*, *pp*, *S.P.*, and *P*. Fingering numbers (5, 6, 7) are present.

Handwritten musical score for measures 24-26. Measure 24 features a 7-measure phrase in the bass clef and a 6-measure phrase in the treble clef. Measure 25 continues with similar phrasing. Measure 26 features a 5-measure phrase in the bass clef and a 3-measure phrase in the treble clef. Performance markings include *sf*, *P*, and *8VA*. Fingering numbers (5, 6, 7, 3) are present.

Handwritten musical score for measures 31-33. Measure 31 features a 12-measure phrase in the bass clef and a 6-measure phrase in the treble clef. Measure 32 continues with similar phrasing. Measure 33 features a 5-measure phrase in the bass clef and a 5-measure phrase in the treble clef. Performance markings include *sf*, *pp*, *subito*, and *molto duro*. Fingering numbers (5, 6, 7) are present.

Handwritten musical score for measures 34-36. Measure 34 features a 5-measure phrase in the bass clef and a 2-measure phrase in the treble clef. Measure 35 continues with similar phrasing. Measure 36 features a 9-measure phrase in the bass clef and a 9-measure phrase in the treble clef. Performance markings include *gliss.*, *Pizz.*, *dolce*, *mf*, and *IV*. Fingering numbers (5, 9) are present.

Handwritten musical score for guitar, consisting of 11 staves. The notation includes various musical symbols such as notes, rests, and dynamic markings. Key annotations include:

- gliss.* (glissando)
- 7* and *10* (fingerings)
- 5* (fingering)
- 3* (fingerings)
- 9* (fingerings)
- 5* (fingerings)
- 6* (fingerings)
- NORM. PP* (Normal Piano)
- SP.* (Sforzando)
- 8VA* (Octave up)
- III Pizz.* (Pizzicato III)
- II pizz.* (Pizzicato II)
- ARCO* (Arco)
- n.v.* (no vibrato)
- Pizz.* (Pizzicato)
- B.C.L.* (Basso Continuo Line)
- I*, *II*, *III* (Pizzicato positions)
- bcl* (basso continuo)
- gliss.* (glissando)
- ARCO* (Arco)
- Pizz.* (Pizzicato)
- mp* (mezzo-piano)

The score is marked with a large watermark: **MB noter** and a red diagonal line with the text **This music is copyright protected**.

— 5 —

Handwritten musical notation on a grand staff. The left hand (bass clef) features a sequence of chords and arpeggios with fingerings 5, 7, 7. The right hand (treble clef) has a melodic line with slurs and accents. Performance markings include *sfzp*, *secco poss.*, *simile*, *Pizz.*, *ARCO*, *mf*, and Roman numerals I, II, III, IV.

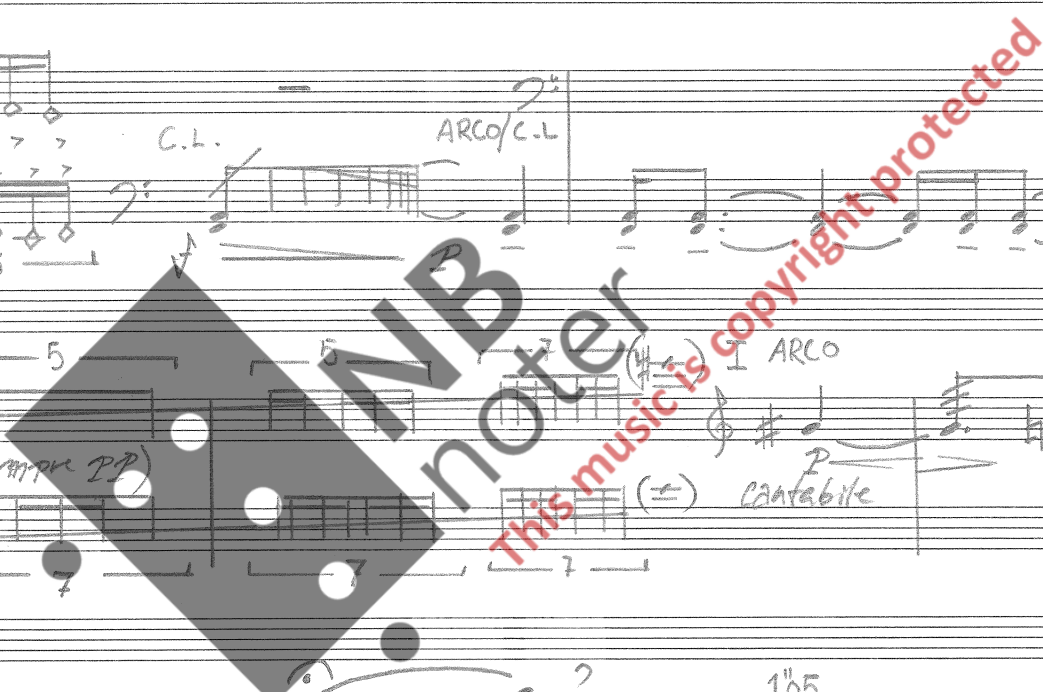
Handwritten musical notation on a grand staff. The left hand continues with arpeggiated figures. The right hand has a melodic line with slurs and accents. Performance markings include *mf*, *pp*, and Roman numerals I, II, III, IV.

Handwritten musical notation on a grand staff. The left hand has arpeggiated figures. The right hand has a melodic line with slurs and accents. Performance markings include *C.L.*, *ARCO/C.L.*, *B.C.L.*, and *ppp*.

Handwritten musical notation on a grand staff. The left hand has arpeggiated figures with *gliss.* markings. The right hand has a melodic line with slurs and accents. Performance markings include *gliss.*, *(sempre pp)*, *ARCO*, *pp*, *mf*, and *conabile*.

Handwritten musical notation on a grand staff. The left hand has arpeggiated figures. The right hand has a melodic line with slurs and accents. Performance markings include *105*, *secco possibile*, *sfzp*, and *simile*.

Handwritten musical notation on a grand staff. The left hand has arpeggiated figures with *pizz.* and *ARCO* markings. The right hand has a melodic line with slurs and accents. Performance markings include *pizz.*, *ARCO*, *mf*, *pp*, *CL.*, *S.T.*, *Secco poss.*, and *CL. SP.*



Handwritten musical notation for the first system, including a treble clef, a key signature of one sharp (F#), and a 4/4 time signature. The notation features a melodic line with slurs and accents, and a bass line with chords and fingerings. A double bar line with a repeat sign is present at the beginning. Performance markings include *sempre pp* and *bcl*.

Handwritten musical notation for the second system, continuing the piece. It includes a treble clef, a key signature of one sharp, and a 4/4 time signature. The notation features a melodic line with slurs and accents, and a bass line with chords and fingerings. Performance markings include *sempre pp* and *ARCO II*.

Handwritten musical notation for the third system, including a treble clef, a key signature of one sharp, and a 4/4 time signature. The notation features a melodic line with slurs and accents, and a bass line with chords and fingerings. Performance markings include *sempre pp* and *bcl*.

Handwritten musical notation for the fourth system, including a treble clef, a key signature of one sharp, and a 4/4 time signature. The notation features a melodic line with slurs and accents, and a bass line with chords and fingerings. Performance markings include *sempre pp* and *RIT.*. A tempo change is indicated at the end of the system: $\text{♩} = 42$ followed by $\text{♩} = 56$.

Handwritten musical notation for the fifth system, including a treble clef, a key signature of one sharp, and a 4/4 time signature. The notation features a melodic line with slurs and accents, and a bass line with chords and fingerings. Performance markings include *sempre pp* and *ARCO*.

Handwritten musical notation for the sixth system, including a treble clef, a key signature of one sharp, and a 4/4 time signature. The notation features a melodic line with slurs and accents, and a bass line with chords and fingerings. Performance markings include *sempre pp* and *bcl*.

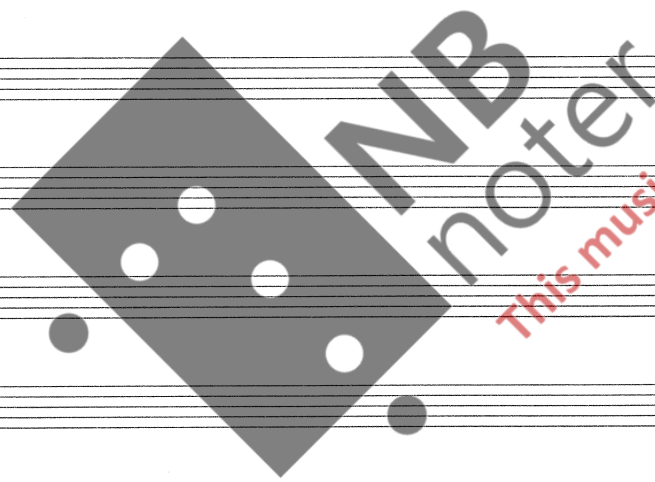
RIT. →

Handwritten musical notation on a grand staff (treble and bass clefs). The first system includes a 6-measure bracket in the treble clef, a 7-measure bracket in the bass clef, and various chord markings (I, II, III, IV) and rhythmic notations.

Second system of handwritten musical notation, continuing the piece with similar chord markings and rhythmic patterns.

Third system of handwritten musical notation, featuring a tempo marking $\text{♩} = 28$ and a 7-measure bracket in the bass clef.

300989 *rylyup* AMERICAN
 DURATA: 9'40 CA.



This music is copyright protected

- 8 -