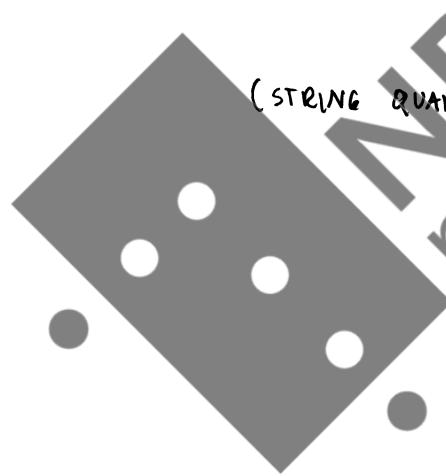


ZYKLUS

LENE GRENAGER - 98

(STRING QUARTET NO 1)




This music is copyright protected


THE ACCIDENTALS ONLY APPLY TO THE NOTE IMMEDIATELY FOLLOWING (EXCEPT BY REPETITION)

 →   
 → 

GRADUAL TRANSITION FROM CRUSH TO NORMAL



DAMP THE INDICATED STRINGS WITH LEFT HAND, AND CRUSH STRING WITH BOW

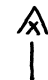


CRUSH NOTE

slow bow MOVE THE BOW SLOWER THAN NORMAL TO PRODUCE A SLIGHT CRUSH




EXTREMELY HIGH PITCH (AS HIGH AS POSSIBLE)




EXTREMELY HIGH CRUSHED PITCH



NIENTE



REPEAT THE NOTE AS FAST AS POSSIBLE.



REPEAT THE NOTE AS FAST AS POSSIBLE BY JUST TOUCHING THE STRING

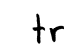


EXTREMELY FAST TREMOLO

I, II, III, IV INDICATES WHICH STRING THE NOTE SHOULD BE PLAYED ON



THE LITTLE NOTE SHOULD BE PLAYED AS CLOSE AS POSSIBLE TO THE MAIN NOTE



THE TRILLS SHOULD BE PLAYED AS FAST AS POSSIBLE



THIS PIECE IS A COMMISSION FROM  
NY MUSIKK EDGALAND FINANCED BY  
THE NORWEGIAN CULTURAL COUNCIL

THE PIECE IS DEDICATED TO THE AMETRI STRING QUARTET

# ZYKLUS

LENE GRENTGER - 98

*♩ = 60*  
sul pont.

Violin I  
Violin II  
Viola  
Violoncello

*non vib. sul pont. intense romantic vibrato*  
*non vib. sul pont. intense romantic vibrato*  
*non vib. sul pont. intense romantic vibrato*  
*non vib. sul pont. intense romantic vib.*

ff P ff P ff P ff P ff P  
4 PPP 4 PPP 4 PPP 4 PPP

6 P 6 P 6 P 6 P

VL I  
VL II  
VLa  
VLc

*non vib. sul pont. intense romantic vib.*  
*non vib. sul pont. intense romantic vib.*  
*non vib. norm.*  
*non vib. norm.*  
*non vib. norm.*

5 sul tasto flautando intense romantic vib.  
4 sul tasto flautando intense romantic vib.  
4 sul tasto flautando intense romantic vib.  
4 sul tasto flautando intense romantic vib.

ppp mp mp mp f  
2 PP 2 PP 2 PP 2 PP  
4 non vib. sul pont. intense romantic vib.  
4 sul tasto flautando intense romantic vib.  
4 sul tasto flautando intense romantic vib.  
4 sul tasto flautando intense romantic vib.

5 PPP 5 PPP 5 PPP 5 PPP

mf P P P

10

VL I  
 sul tasto flautando  
 intense romantic vib.  
 PPP  
 4 f  
 non vib. slow bow (almost crush)  
 sul pont.  
 pizz  
 arco  
 sul tasto flautando  
 intense romantic vib.  
 6 PPP  
 4 P  
 non vib. sul pont.

VL II  
 sul tasto flautando  
 intense romantic vib.  
 PPP  
 4 f  
 non vib. slow bow (almost crush)  
 sul pont.  
 pizz  
 arco  
 sul tasto flautando  
 intense romantic vib.  
 6 PPP  
 4 P  
 non vib. sul pont.

VL a  
 sul tasto flautando  
 intense romantic vib.  
 PPP  
 4 f  
 non vib. slow bow (almost crush)  
 sul pont.  
 pizz  
 arco  
 sul tasto flautando  
 intense romantic vib.  
 6 PPP  
 4 P  
 non vib. sul pont.

VL c  
 sul tasto flautando  
 intense romantic vib.  
 PPP  
 f  
 non vib. slow bow (almost crush)  
 sul pont.  
 pizz  
 arco  
 sul tasto flautando  
 intense romantic vib.  
 4 PPP  
 P

15

VL I  
 col legno battuto  
 PP  
 mf  
 6 f  
 pizz  
 arco  
 non vib. slow bow  
 P  
 mf  
 2 f  
 PP

VL II  
 col legno battuto  
 PP  
 mf  
 6 f  
 pizz  
 arco  
 non vib. slow bow  
 P  
 P  
 2 f  
 mp

VL a  
 col legno battuto  
 PP  
 mf  
 6 f  
 mf  
 4 f  
 non vib. slow bow  
 P  
 P  
 2 f  
 PP

VL c  
 col legno battuto  
 PP  
 mf  
 f  
 P  
 pizz  
 arco  
 non vib. slow bow  
 f  
 P  
 f  
 PP

20

VL I  
4 non vib sul pont  
5 P  
sul tasto flautando  
sul pont. flautando  
sul tasto flaut. 5  
sul tasto  
pp 5 ff pp ff pp 2 P 4 f

VL II  
4 non vib sul pont  
5 P  
sul tasto  
sul pont. tasto  
sul tasto  
sul pont. tasto  
sul tasto  
pp ff pp 5 ff pp ff pp 5 ff pp 2 P 4 f

VL a  
4 non vib sul pont  
5 P  
sul pont. 5  
sul tasto  
pp <ff pp <ff pp <ff P 4 f

VL c  
4 non vib sul pont  
5 P  
sul pont. 5  
sul tasto  
ff pp ff pp ff pp 4 sul tasto P 4 f

25

VL I  
6 sfzp sfzp sfzp  
4 f P 3 PP 6 mf

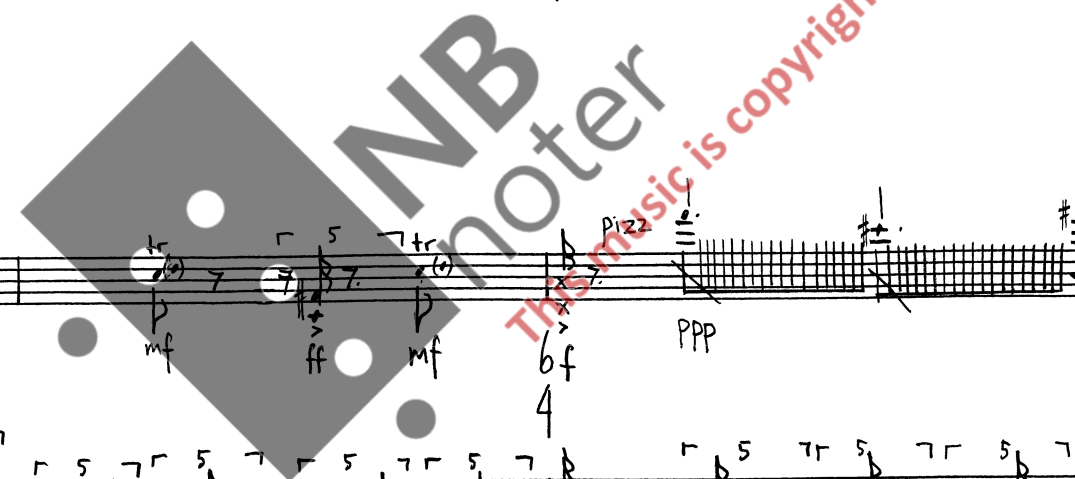
VL II  
4 sul pont  
6 sfzp sfzp sfzp  
4 f mf P 6 P

VL a  
4 sul pont  
6 sfzp sfzp sfzp  
4 f P 6 P

VL c  
4 sul pont  
6 sfzp sfzp sfzp  
4 f P 6 P

Handwritten musical score for Violins I and II, Viola, and Violoncello, measures 29-33. The score includes dynamic markings such as *mp*, *p*, *ff*, *mf*, *f*, and *PPP*. Performance instructions include *arco*, *pizz*, and *sul tasto flautando intense romantic vib.*. Fingerings and bowings are indicated throughout the staves.

Handwritten musical score for Violins I and II, Viola, and Violoncello, measures 34-38. The score includes dynamic markings such as *2mf*, *pp*, *4mf*, *ff*, *mf*, *6f*, and *PPP*. Performance instructions include *arco*, *pizz*, and *tr*. Fingerings and bowings are indicated throughout the staves.



39  
VLI  
5 f PP mf ff 4 mf  
4  
VI II  
5 f PP mf ff 4 P  
4  
VIa  
5 f PP P mf f 4 P  
4  
Vlc  
f PP P mf f P  
4  
sul pont.  
6 ff  
sul pont.  
6 ff  
sul pont.  
6 ff  
sul pont.  
6 ff

43  
VLI  
mf PPP 2 ff 4 non vib. 5 mf f PP  
4  
VI II  
4 P sul tasto flautando intense romantic vib. PPP 2 ff 4 non vib. 5 P f PP  
4  
VIa  
4 P sul tasto flautando intense romantic vib. PPP 2 ff 4 non vib. 5 P f PP  
4  
Vlc  
p PPP 2 ff 4 non vib. 5 P f PP  
4  
sul tasto flautando intense romantic vib.  
non vib.  
sul pont.  
non vib. sul pont.  
non vib. sul pont.  
non vib. sul pont.

48

VL I

2mf 4mf ff mf ff PPP 6mf 4ff PP ff PP

VL II

2P 4ff ff ff ff PPP 6P 4PP <ff PP <ff PP

Vla

2P 4mf ff mf ff mf PPP 6P 4PP 5ff PP ff

VLc

p pp ff mf ff mf ff PPP p pp pp 5ff PP 5ff PP 5ff PP

Annotations: *sul tasto flautando intense romantic vib.*, *pizz*, *arco*, *tr*, *sul pont tasto*

53

VL I

5mf 4ff 6PPP 4

VL II

5P 4ff 6PPP 4

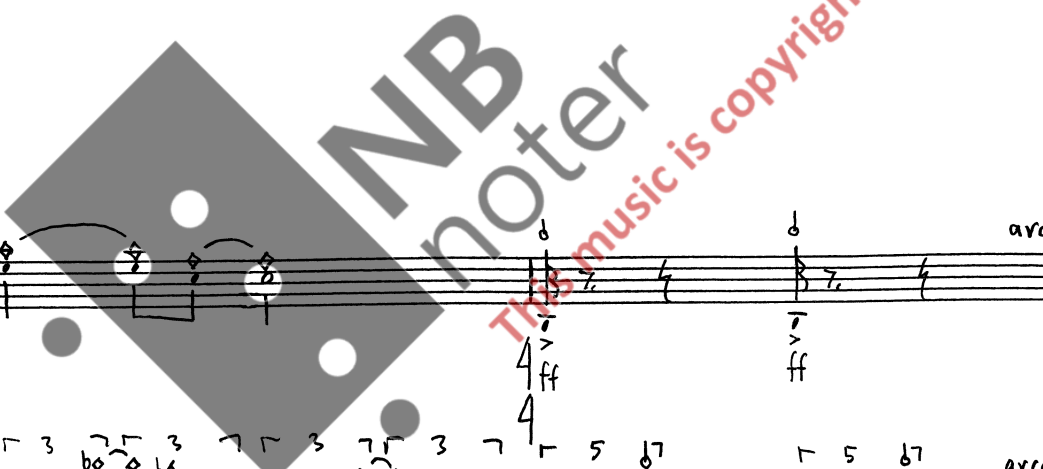
Vla

5P 4ff 6PPP 4

VLc

p pp ff ff ff PPP

Annotations: *sul tasto flautando intense romantic vib.*, *arco*, *arco II*, *arco III*





57

VL I

sul tasto  
mp

sul pont  
pp

sul tasto flautando  
intense romantic vib.  
2#  
4 PPP

non vib.  
sul tasto  
5 P

norm.  
pizz  
arco

VL II

sul tasto  
mp

sul pont  
pp

sul tasto flautando  
intense romantic vib.  
2  
4 PPP

non vib.  
sul tasto  
5 P

norm.  
pizz  
arco

VL a

sul tasto  
mp

sul pont  
pp

sul tasto flautando  
intense romantic vib.  
2  
4 PPP

non vib.  
sul tasto  
5 P

norm.  
pizz  
arco

VL c

sul pont.  
P < f P

sul pont  
f PP

sul tasto flautando  
intense romantic vib.  
PPP

non vib.  
sul tasto  
P 5 5 5 5 5 5

norm  
f mf mf mf f

62

VL I

sul pont  
f

sul tasto flautando  
intense romantic vib.  
4 PPP

non vib.  
sul pont  
P

pizz  
6 f

arco sul pont.  
4 f

VL II

sul pont  
f

sul tasto flautando  
intense romantic vib.  
4 PPP

non vib.  
sul pont  
P

pizz  
6 f

arco sul pont.  
4 f

VL a

sul pont  
f

sul tasto flautando  
intense romantic vib.  
4 PPP

non vib.  
sul pont  
P

pizz  
6 f

arco sul pont.  
4 f

VL c

sul pont  
f

sul tasto flautando  
intense romantic vib.  
4 PPP

non vib.  
sul pont  
P

pizz  
6 f

arco sul pont.  
4 f

♩ = 57 (♩ = 150)

67 norm. detache, non vib

VL I  
5 PP  
4 norm. pizz

VL II  
5 mp  
4 norm. pizz

Vla  
5 mp  
4 sul tasto, non vib.

VLc  
PP

71

VL I  
slow bow, molto vibrato  
2 f  
4 non vib.

VL II  
arco  
2 ff  
4

Vla  
arco  
2 f  
4 slow bow, molto vibrato

VLc  
4 detache, non vib.  
ff

5 PPP  
4 f  
16 sul tasto flautando non vib. detache

5 PPP  
4 f  
16 sul tasto flautando non vib. slow bow

5 PPP  
4 ff  
16 sul tasto flautando non vib. slow bow

PPP  
ff

78

VL I

VL II

VL a

VL c

sul pont

detache norm.

5 8

5 sub P

4

sul pont

sul tasto, molto vibrato

5 8

5 #0

sub pp

4

sul pont

norm

5 8

5 sub P

4

sul tasto, molto vibrato

sub PP

83

VL I

VL II

VL a

VL c

sul tasto

sul pont legato

slow bow

5 PP

2 4

f

9 PP

5 P

8 sul tasto non vib.

3 7 3 7 3 7 3 7

16 sul pont legato

8

5 PP

2 4

f

9 PP

5 P

8 sul tasto

4 detache norm.

16 sul pont legato

8

slow bow

5 PP

2 4

mf

9 PP

5 P

8 sul tasto non vib

4 norm.

16 sul pont legato

8

slow bow

5 PP

2 4

mf

9 PP

5 P

8 sul pont legato

8

slow bow

5 P

8

PP

mf

PP

91 *si.*

VL I *sul tasto flautando*

VL II *sul tasto flautando, detache*

Vla *sul tasto flautando molto vibrato*

VLc *sul tasto flautando molto vibrato*

norm. spiccato

9 P

16 norm. staccato

9 P

16 norm. staccato

9 P

16 norm. staccato

P

98 *spiccato*

VL I *molto vibrato slow bow*

VL II *molto vibrato slow bow*

Vla *sul pont*

VLc *sul pont*

*non vib. sul pont. legato*

*non vib. sul pont. legato*

*sul pont. legato*

*sul pont. legato*

mf

f

f

f

f

f

7

16

7

16

7

16

7

16

Handwritten musical score for Violins I and II, Viola, and Cello. The score is divided into two systems. The first system starts at measure 104. The second system starts at measure 115.

**Violin I (VL I):** *sul pont.* (measures 104-114), *pizz* (measures 115-116), *arco* (measures 117-118), *sul tasto* (measures 119-120).

**Violin II (VL II):** *sul pont. legato* (measures 104-114), *pizz* (measures 115-116), *arco* (measures 117-118), *sul tasto spiccato* (measures 119-120).

**Viola (Vla):** *sul pont.* (measures 104-114), *pizz* (measures 115-116), *arco* (measures 117-118), *sul tasto* (measures 119-120).

**Cello (Vlc):** *sul pont. legato* (measures 104-114), *pizz* (measures 115-116), *arco* (measures 117-118), *sul tasto* (measures 119-120).

Dynamic markings: *pp*, *ff*, *p*.

Tempo/Performance markings: *norm. detache*, *molto vib., slow bow, legato*.

Handwritten musical score for Violin I and II, Viola, and Cello. This system starts at measure 115.

**Violin I (VL I):** *norm. detache* (measures 115-116), *(non vib.)* (measures 117-120), *p f* (measures 117-120).

**Violin II (VL II):** *norm. detache* (measures 115-116), *molto vib., slow bow, legato* (measures 117-120), *ff* (measures 117-120).

**Viola (Vla):** *arco* (measures 115-116), *norm. (non vib.)* (measures 117-120), *mf* (measures 117-120).

**Cello (Vlc):** *arco* (measures 115-116), *molto vib., slow bow, legato* (measures 117-120), *ff* (measures 117-120).

Dynamic markings: *f*, *ff*, *mf*, *p*, *f*.

Tempo/Performance markings: *norm. detache*, *molto vib., slow bow, legato*.

121

sul pont. slow bow

! = ! (♩ = 75)

sul tasto flautando  
intense romantic vibrato

VLI 2 ff 4 sul pont. slow bow

5 2 PPP  
16 4 sul tasto flautando  
intense romantic vibrato

VLII 2 ff 4 sul pont. marcato

5 2 PPP  
16 4 sul tasto flautando  
intense romantic vibrato

VL a 2 ff 4 non vib. sul pont

5 2 PPP  
16 4 sul tasto flautando  
intense romantic vibrato

VL c ff

5 2 PPP  
16 4 sul tasto flautando  
intense romantic vibrato

PPP

129

pizz arco

pizz arco

pizz arco

pizz arco

VLI mf 2 4  
5 8 5 8 5 8

VLII mf 2 4  
5 8 5 8 5 8

VL a mf 2 4  
5 8 5 8 5 8

VL c mf 2 4  
5 8 5 8 5 8

4 sul pont, non vib

4 sul tasto flautando  
intense romantic vib.



152

VLI

VII

Vla

Vlc

sul pont non vib. slow bow

mf

5 8 4 4

sul fasto flautando intense romantic vib.

PPP

158

VLI

VII

Vla

Vlc

sul tasto flautando intense romantic vib.

non vib. slow bow, legato norm.

legato, norm bow

sul pont

norm.

PP

mf

5 8 3

5 f

4 non vib. slow bow, legato norm.

2 mf 2 2 f

8 sul pont. slow bow

3 mf

4 pizz

5 f

4 non vib. slow bow, legato norm.

8 10 4

5 P

8 sul pont. slow bow

8 norm.

3 P

5 f

4 non vib. slow bow, legato norm.

8 10 4

5 P

8 sul pont. slow bow

8 norm.

3 f

mf

PP

P

mf



166

VL I

VL II

VL a

VL c

Handwritten musical score for measures 166-176. The score includes staves for Violin I, Violin II, Viola, and Violoncello. It features various performance instructions such as *sul pont.*, *norm.*, *slow bow*, *norm. bow*, *mf*, *pp*, *f*, *ppp*, *ff*, and *5:2*. Fingerings and bowings are indicated with numbers 1-5 and letters P, F, S. A large watermark "NB Noter" is visible across the score.

177

VL I

VL II

VL a

VL c

Handwritten musical score for measures 177-186. The score includes staves for Violin I, Violin II, Viola, and Violoncello. It features various performance instructions such as *pizz.*, *arco*, *legato*, *mf*, *f*, *mp*, and *p*. Fingerings and bowings are indicated with numbers 1-5 and letters P, F, S. A large watermark "NB Noter" is visible across the score.

183

Handwritten musical score for measures 183-188. The score is written for four staves: Violin I (VL I), Violin II (VL II), Viola (Vla), and Violoncello (Vlc). The music features various articulations such as pizzicato (pizz), arco, and arco molto vibrato. Dynamic markings include p, mp, mf, and f. Rhythmic values of 3, 4, 5, 8, and 12 are noted. A 'slow bow' instruction is present at the top right. A large watermark 'NB noter' and 'This music is copyright protected' is overlaid on the score.

189

Handwritten musical score for measures 189-194. The score continues with four staves: Violin I (VL I), Violin II (VL II), Viola (Vla), and Violoncello (Vlc). It includes detailed annotations such as 'slow bow' on the Violin II staff, and various dynamic markings like p, mp, mf, f, and ff. Articulations like pizz and arco are also present. Rhythmic values of 2, 3, 4, 5, 12, and 16 are indicated. A large watermark 'NB noter' and 'This music is copyright protected' is overlaid on the score.

196

VL I  
*spiccato*  
 7 PP  
 5 PPP  
*sul pont.*  
 4  
*sul tasto flautando*  
 4 PP  
 6 P  
*slow bow norm.*

VL II  
*spiccato*  
 7 PP  
 5 PPP  
*sul pont.*  
 4  
*sul tasto flautando*  
 4 PP  
 6 P  
*slow bow norm.*

VL a  
 7 PP  
 5  
*sul pont., tenuto, at the point*  
 4 PP  
 6

VL c  
 7 PP  
 5  
*sul pont., tenuto, at the point*  
 4 PP  
 6

201

VL I  
*sul tasto flautando*  
 4 PP  
 2 P  
 5 PP  
 4  
 mf

VL II  
*sul tasto flautando*  
 4 PP  
 2 P  
 5 PP  
 4  
 mf

VL a  
 4  
 2  
 5  
 4

VL c  
 4  
 2  
 5  
 4

*slow bow*  
*norm.*  
*sul tasto flautando*  
*norm.*

206

VL I *sul tasto flautando* *slow bow norm.*

VL II *sul tasto flautando* *slow bow norm.*

Vla *sul tasto flautando*

Vlc *sul tasto flautando*

2/4 4/4 2/4 4/4 2/4 4/4

pp ppp 6 pp 4 p

211

VL I *sul tasto flautando* *intense romantic vib.*

VL II *sul tasto flautando* *intense romantic vib.*

Vla *sul tasto flautando*

Vlc *sul tasto flautando*

2/4 4/4 2/4 4/4 2/4 4/4

pp ppp 6 pp 4 p

*slow bow* *norm.*

216

VL I

VL II

VL a

VL c

slow bow

sul pont, tenuto

slow bow norm.

p

pp

ppp

mf

221

VL I

VL II

VL a

VL c

slow bow

p

ppp

mf



235

norm.  $\#^{\flat}$   $\#^{\flat}$   $\#^{\flat}$   $\#^{\flat}$

VLI

5 PPP

4

sul pont tr  $\#^{\flat}$  ( $\#^{\flat}$ )

4 PP

4

norm.  $\#^{\flat}$

6 sfzp

4

VLII

5 PPP

4

sul pont tr  $\#^{\flat}$  ( $\#^{\flat}$ )

4 PP

4

norm.  $\#^{\flat}$

6 sfzp

4

Vla

5

4

6

4

Vlc

239

sul pont tr  $\#^{\flat}$  ( $\#^{\flat}$ )

VLI

4 PP

4

P

norm.  $\#^{\flat}$  ( $\#^{\flat}$ )

2 sfzp

4

5 PPP

4

slow bow

5 7

VLII

4 PP

4

sul pont tr  $\#^{\flat}$  ( $\#^{\flat}$ )

P

sul tasto tr  $\#^{\flat}$  ( $\#^{\flat}$ )

2 sfzp

4

5 PPP

4

slow bow

5 7

PPP

5 7

Vla

4

4

2

4

5

4

PPP

slow bow

5 7

5 7

slow bow

5 7

5 7

Vlc

PPP

slow bow

5 7

5 7

PPP

244

VL I

VL II

VL a

VL c

Handwritten musical score for measures 244-250. The score is for four violin parts (VL I, VL II, VL a, VL c). It includes dynamic markings such as *ppp*, *pp*, *sfzp*, and *sfz p*. Performance instructions include *sul tasto*, *norm.*, *pizz*, and *arco*. Fingering numbers (1-5) and bowing directions (up/down) are indicated throughout the staves.

249

VL I

VL II

VL a

VL c

Handwritten musical score for measures 249-255. The score continues for the four violin parts. It includes dynamic markings such as *ppp*, *pp*, *sfzp*, and *sfz p*. Performance instructions include *sul tasto*, *norm.*, *pizz*, and *arco*. Fingering numbers and bowing directions are indicated throughout the staves.



253

norm

PPP

2 5

4 4

IIA

5 7

I A.

sul pont.

PPP

4 4

norm.

4 4

IIA

5 7

I A.

sul pont.

PPP

4 4

IIA

5 7

I A.

sul pont.

PPP

4 4

IIA

5 7

I A.

sul pont.

PPP

VI I

4

4

3 7 3 7 3 7 3 7

VI II

4

4

3 7 3 7 3 7 3 7

VI a

4

4

3 7 3 7 3 7 3 7

VI c

4

4

3 7 3 7 3 7 3 7

DVR: 13'18"