

LATE FEET



FOR STRING-QUARTET AND SAXOPHONE-QUARTET

LENE GRENAGER - 02



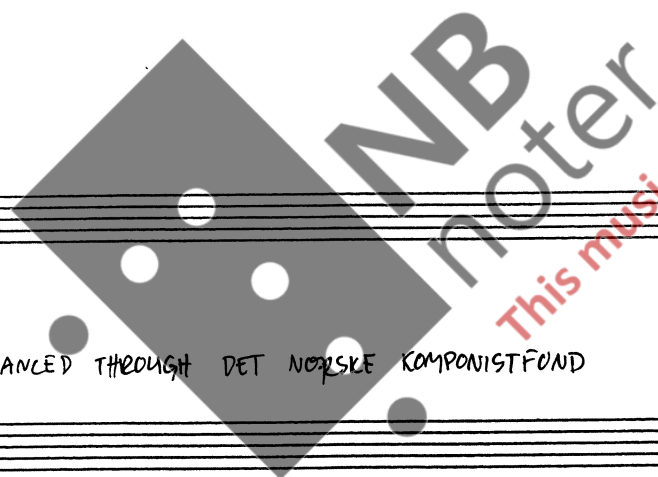
NB
notef

This music is copyright protected

MULTIPHONICS

	SOPRANO	ALTO	TENOR	BARTON
SOUND	(b2) b° #°	b° #°	b° #°	b° #° b° #°
FINGERING	1 2 3H 4 6 C	1 2 3 Ta 4 5 6 EP	1 2 3 4bb 6 8 9 10 11	1 2 3 A 4 5 6 7 8 9 10 11
NOTATED	b° #°	b°	b°	b° #° b° #°

| = air - sound
 x = niente



This music is copyright protected

THIS PIECE IS A COMMISSION FROM CIKADA FINANCED THROUGH DET NORSKE KOMPONISTFUND

LATE FEET

LENE GRENAGER -02

$\text{♩} = 56$

Soprano Sax (Db)

Alto sax (Eb)

Tenorsax (Bb)

Barytonsax (Eb)

Violin I

Violin II

Vla

Vlc

slow bow, non vib.

norm. bow, norm. vib.

sul pont.

tr

pp

f

ff

5:2

Sop Sax (Bb)

Alto Sax (Eb)

Tenor Sax (Bb)

Bari Sax (Eb)

VI I

VI II

Vla

Vlc

sul pont., non vib.

sul pont., non vib.

sul pont., non vib.

sul pont., non vib.

14

Sop. Sax (Bb)

Alto Sax (Eb)

Ten. Sax (Eb)

Bar. Sax (Eb)

sul pont., non vib.

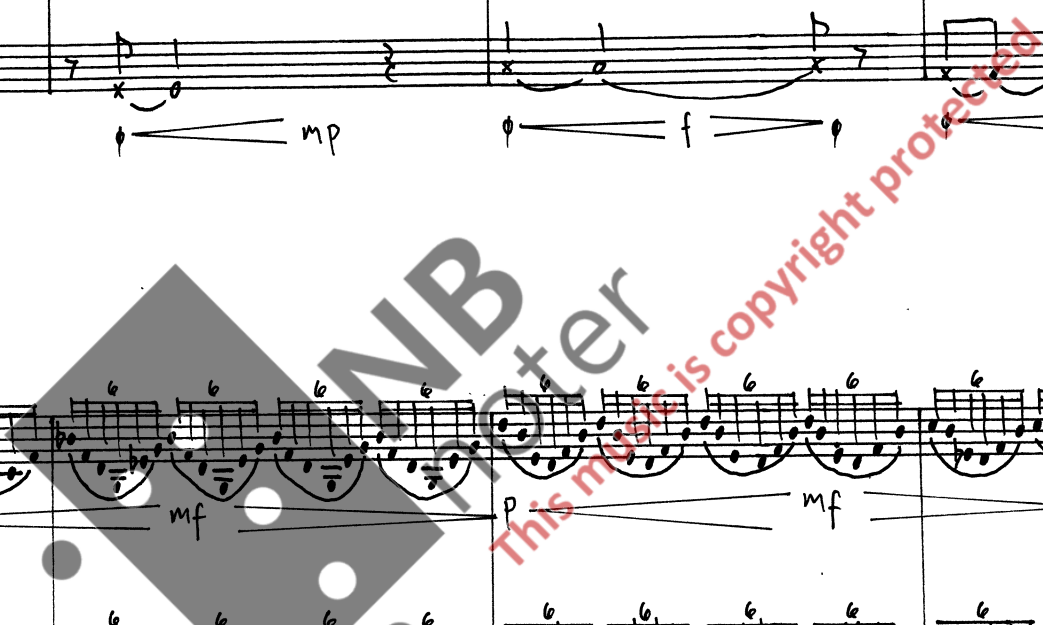
VL I

VL II

VLA

VLC

norm., norm. vib.



28

Sopr. Sax (Bb)

Alto Sax (Eb)

Ten. Sax (Bb)

Bar. Sax (Eb)

Vl I

Vl II

Vla

Vlc

This music is copyright protected

Handwritten musical score for saxophones and strings. The score is divided into systems for woodwinds and strings. The woodwind section includes Soprano Sax (Bb), Alto Sax (Eb), Tenor Sax (Bb), and Baritone Sax (Eb). The string section includes Violin I, Violin II, Viola, and Violoncello. The score features various musical notations such as dynamics (p, f, mp, mf, ff), articulation (>), and fingerings (3, 5, 6). A large watermark 'NB Moter' is overlaid on the score.

36

Sop. Sax (Bb)

Alto Sax (Eb)

Ten. Sax (Bb)

Bar. Sax (Eb)

VL I

VL II

Vln

Vlc

NB noter
This music is copyright protected

52

Sop. Sax (Bb)

Alto Sax (Eb)

Ten. Sax (Bb)

Bar. Sax (Eb)

non vib., slightly sul pont (just a little higher contact point than ordinary to produce a timbre with many audible high partials)

VL I

VL II

VLa

Vlc

61

Sopr. Sax (Bb)

Alto Sax (Eb)

Ten. Sax (Bb)

Bar. Sax (Eb)

5mf p pp mf 2f p ff pp 3f p mp mf 5p f pp ff 9p mf f pp 2p mf p pp mf f p ff 5pp f p mp 2mf p f pp

8 4 8 8 8 4 8 4

VLI

VLII

Vla

Vlc

5 p mf f pp 2p mf p pp 3mf f p ff 5pp ff f p 9 mf mp f mf 2p f pp ff p mf f pp 5p mf p pp 2mf f p ff

8 4 8 8 8 4 8 4

p mf f pp p mf p pp mf f p ff pp ff f p mf mp f mf p f pp ff p mf f pp p mf p pp mf f p ff



70

Sop. Sax (Bb)

Alto Sax (Eb)

Ten. Sax (Bb)

Bar. Sax (Bb)

sul tasto flautando, exaggerated vibrato (but very precise durations)
(fast bow!)

VLI

3 PPP

4

sul tasto flautando, exaggerated vibrato (but very precise durations)
(fast bow!)

VLII

3 PPP

4

sul tasto flautando, exaggerated vibrato (but very precise durations)
(fast bow!)

VLA

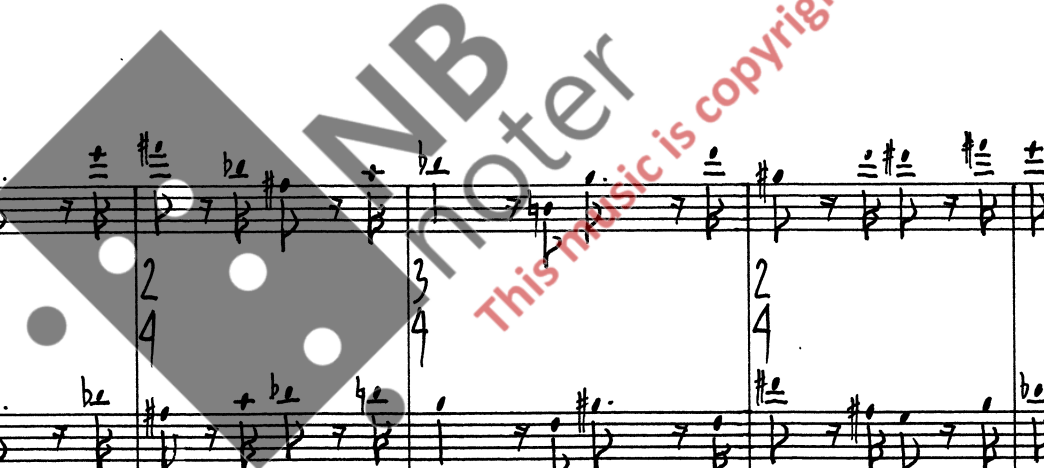
3 PPP

4

sul tasto flautando, exaggerated vibrato (but very precise durations)
(fast bow!)

VLC

PPP



78

Sop. Sax (Bb)

Alto Sax (Eb)

Ten. Sax (Bb)

Bari. Sax (Eb)

VI I

VI II

Vla

Vlc

86

Sop. Sax (Bb)

Alto Sax (Eb)

Ten. Sax (Bb)

Bar. Sax (Eb)

non vib., slightly sul pont (see bar 52)

VL I

VL II

VLa

Vlc

95

Sopr. Sax (Bb)

Alto Sax (Eb)

Ten. Sax (Db)

Bar. Sax (Eb)

Vl I

Vl II

Vln

Vlc

This music is copyright protected

10A

Sop. Sax (Bb)
3 pp
4

Alt. Sax (Eb)
3 pp
4

Ten. Sax (Bb)
3 pp
4

Bw. Sax (Eb)
pp

VI I
3 pp
4

VI II
3 pp
4

VLA
3 pp
4

VLC
pp

sul pont., slow bow, non vib.

sul pont., slow bow

NB
noter
This music is copyright protected

112

Sop. Sax (B \flat)

Altsax (E \flat)

Ten. Sax (B \flat)

Bar. Sax (E \flat)

VL I

VL II

Vla

Vlc

(norm. bow)

sul pont.

norm.

tr

mf

f

p

5:2

3

5

ff

detache

This music is copyright protected

Detailed description of the musical score: The score is for measures 112-115. It features seven staves. The saxophone parts (Sop. Sax, Altsax, Ten. Sax, Bar. Sax) are in treble clef. The string parts (VL I, VL II, Vla, Vlc) are in bass clef. The saxophone parts contain complex rhythmic patterns with many trills, triplets, and slurs. Dynamics range from piano (p) to fortissimo (ff). Performance instructions include 'sul pont.' (sul ponticello), 'norm.' (normal), and 'detache' (detached). A large watermark 'MIDI-MAN' is overlaid diagonally across the score, with the text 'This music is copyright protected' written in red below it.

124

Sop. Sax (Bb)

Alto Sax (Eb)

Ten. Sax (Db)

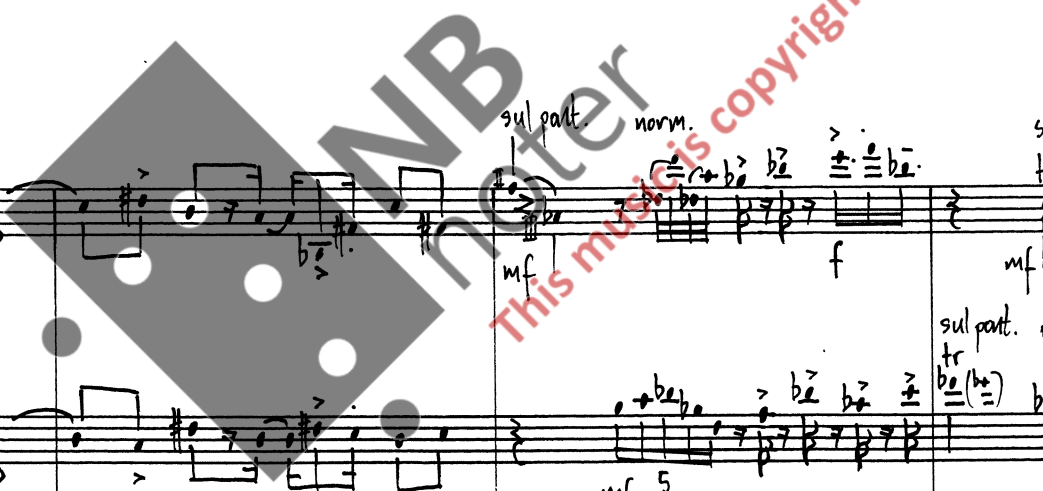
Bari. Sax (Eb)

VL I

VL II

Vla

Vlc



Handwritten musical score for a saxophone quartet and string ensemble. The score is divided into two systems of staves.

System 1 (Top):

- Sop. Sax (Bb):** Measures 130-135. Dynamics: *f*, *p*, *f*, *p*, *f*, *p*, *f*, *p*.
- Alt. Sax (Eb):** Measures 130-135. Dynamics: *f*, *p*, *f*, *p*, *f*, *p*, *f*, *p*.
- Ten. Sax (Bb):** Measures 130-135. Dynamics: *f*, *p*, *f*, *p*, *f*, *p*, *f*, *p*.
- Bar. Sax (Eb):** Measures 130-135. Dynamics: *f*, *p*, *f*, *p*, *f*, *p*, *f*, *p*.

System 2 (Bottom):

- VI I:** Measures 130-135. Dynamics: *f*, *mf*, *f*, *mf*, *f*, *mf*, *ff*, *f*, *mf*, *f*, *mf*.
- VI II:** Measures 130-135. Dynamics: *f*, *mf*, *f*, *mf*, *f*, *mf*, *ff*, *f*, *mf*, *f*, *mf*.
- Vla:** Measures 130-135. Dynamics: *mf*, *f*, *mf*, *f*, *mf*, *f*, *ff*, *mf*, *ff*, *mf*, *f*.
- Vlc:** Measures 130-135. Dynamics: *f*, *mf*, *f*, *mf*, *f*, *mf*, *ff*, *f*, *mf*, *f*, *mf*.

Performance markings include *sul pont.*, *norm.*, *tr.*, and various articulation symbols. A large watermark "IMBnoter" and "This music is copyright protected" is overlaid on the score.

136

Sop. Sax (Db)
3 p
4

Alt. Sax (Eb)
3 p
4

Ten. Sax (Bb)
3 p
4

Bar. Sax (Eb)
p

slow bow., non vib.
tr e. (±)

VL I
3 pp
4 slow bow., non vib.

VL II
3 pp
4 slow bow., non vib.

VL a
3 pp
4 slow bow., non vib.

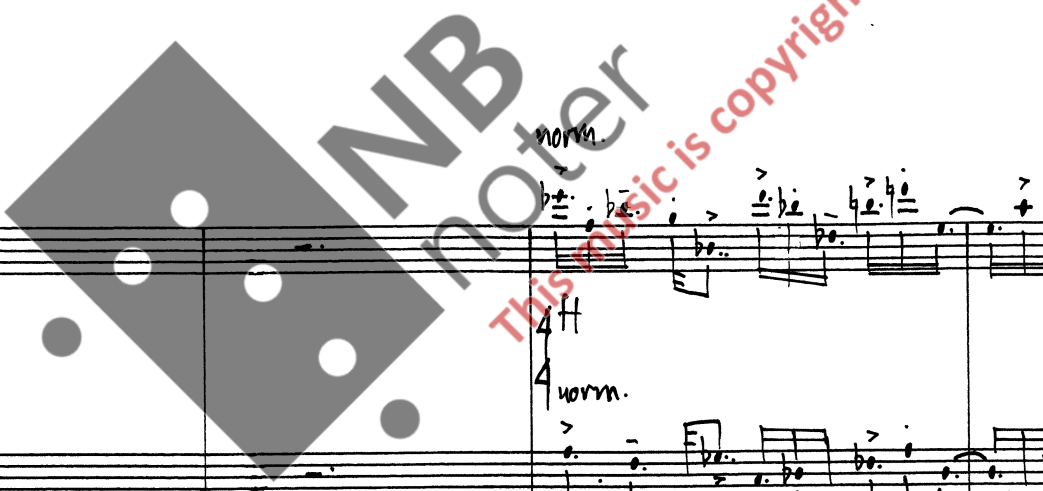
VL c
pp

norm.
ff

norm.
ff

norm.
ff

norm.
ff



143

Sop. Sax (B \flat)
5 ppp
8

Alt. Sax (E \flat)
5 ppp
6

Ten. Sax (E \flat)
5 ppp
8

Bar. Sax (E \flat)
ppp

VL I
5 pp
8

VL II
5 pp
8

Vln
5 pp
8

Vlc
pp

Handwritten musical score for saxophones and violins/violas. The score is divided into two systems. The first system includes Soprano, Alto, Tenor, and Baritone saxophones. The second system includes Violin I, Violin II, Violin, and Viola. Each staff contains musical notation with notes, rests, and dynamic markings. Fingerings and breath marks are indicated below the notes. A large watermark 'NB Moter' is overlaid on the center of the page, with the text 'This music is copyright protected' written diagonally across it.