

EJED

AV FREDRIK GLANS

FÖR

SOLO FLYGEL



NB  
noter

*This music is copyright protected*

DURATA: CA 5 MIN

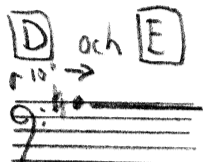
STYCKET BLEV FÄRDIGKOMPONERAT JANUARI 1991 OCH ÄR TILLÄGNAT

VICTORIA C. JAKHELLN

## TECKENFÖRKLARINGAR

OBS!

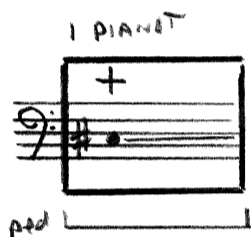
I detta stycke gäller traditionella regler för tillfälliga förtecken.



Tidsavsnitten som uppges i sekunder i dessa delar är ungefärliga. Strecken efter tonerna visar grafiskt hur länge dessa klingar.



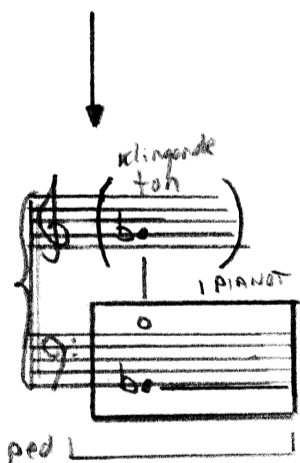
Pizzicato - knäpp med nageln på den sträng som noten indikerar.



"Stoppad" ton - sätt fingret relativt hårt mot strängen till angiven not. Gör detta ca. 2 cm från slutet av strängen och slå därefter an tonen på klaviaturet.

(normal)

Återgå till vanligt spel på tangenterna.

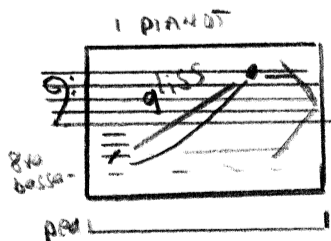


En pil mellan två system visar att de noterade tonerna skall spelas samtidigt.

Lägg fingertoppen löst mot den angivna strängen, på en punkt när strängen delats in i 4 delar:



Slå därefter an tonen på klaviaturet. Den ton som klingar är den fjärde övertonen (samma ton två oktaver högre). Den klingande tonen är noterad på det övre systemet.



Glissando med fingertopparna över de strängar som är angivna. Den lägsta tonen anger ungefärlig begynnelseton, den högsta ungefärlig slutton.

# F J E D av Fredrik Glans

för solo flygel

$\text{♩} \approx 60$  Maestoso

Handwritten musical score for the first system. It consists of two staves. The upper staff is in treble clef with a 4/4 time signature. It begins with a sharp sign (#) and contains several chords and melodic fragments, some with accents (>) and slurs. The lower staff is in bass clef and contains a bass line with chords and a few notes. Pedal markings 'ped.' are present under both staves. A dynamic marking 'p' is written above the upper staff.

Handwritten musical score for the second system. It consists of two staves. The upper staff continues the melody from the first system, featuring a 'rit.' marking and a 'p' dynamic. It ends with a '(Attacca subito)' marking. The lower staff continues the bass line. Pedal markings 'ped.' are present. Dynamic markings 'mp', 'mf', and 'sfz' are written above the upper staff.

Handwritten musical score for the third system, marked 'A'. It consists of two staves. The upper staff features a series of triplets in the right hand, starting with a 'p' dynamic. The lower staff has a bass line with some chords. A 'f' dynamic is written below the lower staff. A large watermark 'NB noter' is overlaid on the system.

Handwritten musical score for the fourth system. It consists of two staves. The upper staff contains a continuous eighth-note or sixteenth-note pattern in the right hand, starting with a 'p' dynamic. The lower staff has a bass line with some chords. A 'mp' dynamic is written below the lower staff.

Handwritten musical score for the fifth system. It consists of two staves. The upper staff continues the eighth-note pattern from the previous system. The lower staff has a bass line with some chords. A 'f' dynamic is written below the lower staff.

Handwritten musical score system 1. The upper staff contains a melodic line with slurs and ties, starting with a piano (*p*) dynamic. The lower staff contains a bass line with rests and a few notes, including a measure with a forte (*f*) dynamic and an accent (>).

Handwritten musical score system 2. The upper staff continues the melodic line. The lower staff has a bass line with notes and rests, including a measure with a mezzo-forte (*mp*) dynamic.

Handwritten musical score system 3. The upper staff features a melodic line with a crescendo hairpin. The lower staff has a bass line with notes and rests, including a mezzo-forte (*mf*) dynamic.

Handwritten musical score system 4. The upper staff has a melodic line with a forte (*f*) dynamic. The lower staff has a bass line with notes and rests, including a mezzo-forte (*mf*) dynamic and a *sub p* marking.

Handwritten musical score system 5. The upper staff has a melodic line with a mezzo-forte (*mp*) dynamic. The lower staff has a bass line with notes and rests, including a piano (*pp*) dynamic. A dashed line above the staff is labeled *8va* and *loco*.

Handwritten musical score system 6. The upper staff has a melodic line with a mezzo-forte (*mf*) dynamic. The lower staff has a bass line with notes and rests, including a piano (*p*) dynamic. A dashed line above the staff is labeled *8va*.

(810)

1 loco

Handwritten musical notation for the first system. The treble staff contains several measures of music with notes and rests, some marked with accents (>). The bass staff features a melodic line with slurs and dynamic markings including 'f' and 'pp'. There are also some handwritten annotations above the treble staff.

B

Handwritten musical notation for the second system, labeled 'B'. It consists of two staves with musical notation, including notes, rests, and dynamic markings such as 'mp'. There are also some handwritten annotations above the treble staff.

Handwritten musical notation for the third system. The treble staff has notes and rests with dynamic markings 'mf', 'p', and 'm.d.'. The bass staff has notes and rests with dynamic markings 'p' and 'm.d.'. There are also some handwritten annotations above the treble staff.

Handwritten musical notation for the fourth system. The treble staff has notes and rests with dynamic markings 'mf', 'p', and 'subp'. The bass staff has notes and rests with dynamic markings 'mf', 'p', and 'subp'. There are also some handwritten annotations above the treble staff.

Handwritten musical notation for the fifth system. The treble staff has notes and rests with dynamic markings 'mp', 'p', and '3'. The bass staff has notes and rests with dynamic markings 'mp', 'p', and '3'. There are also some handwritten annotations above the treble staff.

Handwritten musical notation for the sixth system. The treble staff has notes and rests with dynamic markings 'p', 'm.d.', and 'subp'. The bass staff has notes and rests with dynamic markings 'p', 'm.d.', and 'subp'. There are also some handwritten annotations above the treble staff.

Handwritten musical score, first system. Treble clef, 6/4 time signature. Includes notes, rests, and dynamic markings such as *molto cresc.* and *f*. A large slur covers the first two measures, and another slur covers the last two measures. A fermata is present over the final note of the second measure.

Handwritten musical score, second system. Treble clef, 6/4 time signature. Includes notes, rests, and dynamic markings such as *mp*, *f*, *p*, *cresc.*, *f*, *pp*, *cresc.*, *mp*, and *cresc.*. A fermata is present over the final note of the second measure.

Handwritten musical score, third system. Treble clef, 6/4 time signature. Includes notes, rests, and dynamic markings such as *mf*, *cresc.*, *f*, *cresc.*, *f*, *f*, and *f*. A large slur covers the first two measures, and another slur covers the last two measures. A fermata is present over the final note of the second measure.

Handwritten musical score, fourth system. Treble clef, 6/4 time signature. Includes notes, rests, and dynamic markings such as *p*, *mf*, *f*, and *subp*. A large slur covers the first two measures, and another slur covers the last two measures. A fermata is present over the final note of the second measure.

Handwritten musical score, fifth system. Treble clef, 6/4 time signature. Includes notes, rests, and dynamic markings such as *mp*, *cresc.*, *mf*, and *cresc.*. A large slur covers the first two measures, and another slur covers the last two measures. A fermata is present over the final note of the second measure.

Handwritten musical score, sixth system. Treble clef, 6/4 time signature. Includes notes, rests, and dynamic markings such as *cresc.*, *f*, *f*, and *f*. A large slur covers the first two measures, and another slur covers the last two measures. A fermata is present over the final note of the second measure.

rit. - - - - -  $\text{♩} \approx 108$

mp

p

m.s.

m.s.

(m.d.)

pp

rit. - - - - -  $\text{♩} \approx 84-88$

pp

ped.

pp

mp

p

mf

något lugnare

Handwritten musical score for the first system. It consists of three staves: a treble clef staff at the top, a grand staff (treble and bass clefs) in the middle, and a bass clef staff at the bottom. The music is in 3/4 time. The first staff has a treble clef and a key signature of one sharp (F#). The second and third staves have a key signature of one flat (Bb). The first staff starts with a dynamic marking of *pp*. The second staff starts with a dynamic marking of *pp*. The third staff starts with a dynamic marking of *pp*. There are various notes, rests, and slurs throughout the system. A pedaling symbol is present at the bottom left.

rit

Handwritten musical score for the second system. It consists of three staves: a treble clef staff at the top, a grand staff (treble and bass clefs) in the middle, and a bass clef staff at the bottom. The music is in 3/4 time. The first staff has a treble clef and a key signature of one flat (Bb). The second and third staves have a key signature of one flat (Bb). The first staff starts with a dynamic marking of *p*. The second staff starts with a dynamic marking of *p*. The third staff starts with a dynamic marking of *p*. There are various notes, rests, and slurs throughout the system. A watermark "ANB noter" and "This music is copyright protected" is overlaid on the score. A pedaling symbol is present at the bottom left.

D

10'' →

PIANOT

Handwritten musical score for the third system. It consists of three staves: a treble clef staff at the top, a grand staff (treble and bass clefs) in the middle, and a bass clef staff at the bottom. The music is in 3/4 time. The first staff has a treble clef and a key signature of one flat (Bb). The second and third staves have a key signature of one flat (Bb). The first staff starts with a dynamic marking of *mf*. The second staff starts with a dynamic marking of *mf*. The third staff starts with a dynamic marking of *mf*. There are various notes, rests, and slurs throughout the system. A pedaling symbol is present at the bottom left.



(10")

Pizz ☺  
mf

(normal)  
mf mp

mp p

(ped) mf

(10")

+

mp

(normal)  
mf

mp

mp

(ped)

(10")

p pp

pp

pp

mp

PIANOT  
Pizz ☺  
mp

(ped)

(10") →

(1 PIANO) PIZZ

(ped) mf

(10") →

pp

pp

pp

Klingende ton

(ped) mf

[E] (10") →

mp

mp

mp

8va

8va

(norm)

mf

8vbassa

ped

(10") →

Loco

1 PIANOT

Loco

(ped)

klingande ton

klingande ton

mp

(10") →

(8va) klingande ton

(Loco) 1 PIANOT

(1 PIANOT)

8va bassa

pp

(ped)

(10") →

LÅT KLANGEN LIGGA. SLÄPP UPP HÖLDER PEDAL OCH AVBRYT KLANGEN NÄR DET KÄNNS NATURLIGT.

(ped)

Oslo 20/1-91  
*Justus Glen*