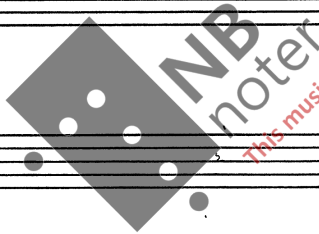


Arvid Gangsö:

"SANG"

for

Klavér



This music is copyright protected

ca. 8 min.

Hängesund-83.



"SANG"

for
klavier

$\text{♩} = 48$

Ped. sempre al fine

sfz: ***f***. Pos.

Aavid Gangsö

Handwritten musical notation for the first system. It features a treble clef and a bass clef. The treble staff contains a series of notes: a half note B-flat, a quarter note G, a quarter note F-sharp, a half note E, and a quarter note D-sharp. The bass staff has a whole note G. Dynamic markings include *mp* and *f*. There are also some handwritten annotations like a box around the first few notes and a bracket on the bass staff.

Handwritten musical notation for the second system. It features a treble clef and a bass clef. The treble staff contains notes: a half note B-flat, a quarter note G, a quarter note F-sharp, a half note E, and a quarter note D-sharp. The bass staff has a whole note G. Dynamic markings include *sfz* and *p*. The word "Niente." is written above the treble staff and below the bass staff. There are also some handwritten annotations like a box around the first few notes and a bracket on the bass staff.

Handwritten musical notation for the third system. It features a treble clef and a bass clef. The treble staff contains notes: a half note B-flat, a quarter note G, a quarter note F-sharp, a half note E, and a quarter note D-sharp. The bass staff has a whole note G. Dynamic markings include *mp* and *sfz*. The word "Niente." is written above the treble staff and below the bass staff. There are also some handwritten annotations like a box around the first few notes and a bracket on the bass staff.

Handwritten musical notation for the fourth system. It features a treble clef and a bass clef. The treble staff contains notes: a half note B-flat, a quarter note G, a quarter note F-sharp, a half note E, and a quarter note D-sharp. The bass staff has a whole note G. Dynamic markings include *sfz* and *p*. The word "Niente." is written above the treble staff and below the bass staff. There are also some handwritten annotations like a box around the first few notes and a bracket on the bass staff.

Handwritten musical notation for the fifth system. It features a treble clef. The staff contains notes: a half note B-flat, a quarter note G, a quarter note F-sharp, a half note E, and a quarter note D-sharp. Dynamic markings include *sfz*. There are also some handwritten annotations like a box around the first few notes and a bracket on the bass staff.

Handwritten musical notation on a single staff. It begins with a treble clef and a key signature of one flat (B-flat). The melody consists of quarter notes and eighth notes with various accidentals (sharps and naturals). The notation is somewhat sketchy and includes some handwritten corrections.

Two empty musical staves, each marked with a double slash (//) at the beginning, indicating they are unused.

Handwritten musical notation on a single staff. It starts with a treble clef and a key signature of one flat. The notation includes dynamic markings such as *sfz.* (sforzando) and *P.* (piano), along with accents (^) over notes. The melody features quarter and eighth notes with various accidentals.

Two empty musical staves, each marked with a double slash (//) at the beginning.

Handwritten musical notation on a single staff. It begins with a treble clef and a key signature of one flat. The notation includes a dynamic marking of *(P)* and the word *Niente.* written in the bass clef area. The melody consists of quarter and eighth notes with various accidentals.

Handwritten musical notation on two staves. The top staff has a treble clef and a key signature of one flat, with dynamic markings *sfz.* and *(P)*. The bottom staff has a bass clef and a key signature of one flat. The notation includes various accidentals and rests. A large watermark is visible across the center of the page.

Handwritten musical notation on a single staff. It starts with a treble clef and a key signature of one flat. The notation includes dynamic markings *sfz.* and *P.*, along with accents (^) over notes. The melody consists of quarter and eighth notes with various accidentals.

Two empty musical staves, each marked with a double slash (//) at the beginning.

Handwritten musical notation on a single staff. It begins with a treble clef and a key signature of one flat. The notation includes dynamic markings *P.* and *sfz.*, along with accents (^) over notes. The melody consists of quarter and eighth notes with various accidentals.

Handwritten musical notation for the first system, featuring treble and bass staves. The treble staff begins with a flat sign (b) and a sharp sign (#). Dynamic markings include *sfz.* and *sfz.*. A triplet of notes is marked with *sfz. sfz. sfz. sfz.*. A fermata is present over a note in the treble staff.

Handwritten musical notation for the second system. The treble staff contains several notes with accents (^) and dynamic markings like *sfz.* and *sfz.*. A fermata is placed over a note. The bass staff has a dynamic marking of *sfz.* and a sharp sign (#). A note in the bass staff is marked with a question mark in parentheses (P).

Handwritten musical notation for the third system. The treble staff shows a few notes with a fermata. The bass staff has a sharp sign (#) and a triplet of notes marked with a bracket and the number 3 (-3-).

Handwritten musical notation for the fourth system. The treble staff contains a sequence of notes with various accidentals. A large watermark is overlaid on this system, reading "NB Moter" and "This music is copyright protected".

Handwritten musical notation for the fifth system. The treble staff starts with a flat sign (b) and a sharp sign (#). It features a triplet of notes with dynamic markings *sfz. sfz.* and a note marked with *P.* (piano).

Handwritten musical notation for the sixth system. The treble staff includes a note marked with *P. sempre* and an octave sign (8va). The bass staff has a note marked with *Niente.* (pianissimo) and a sharp sign (#).

Handwritten musical notation on a grand staff. The treble clef contains notes: a half note with a flat (F), a quarter note with a sharp (F#), a quarter note (G), and a quarter note with a sharp (F#). The bass clef contains a whole note with a sharp (F#). A bracket above the bass clef contains a dot and is labeled "Niente."

Handwritten musical notation on a grand staff, starting with a double bar line and the marking "(8va)".

Handwritten musical notation on a grand staff. The treble clef contains notes: a half note with a flat (F), a quarter note with a sharp (F#), a quarter note with a flat (F), a quarter note with a sharp (F#), and two quarter notes with question marks. The bass clef contains a whole note with a sharp (F#). A bracket above the bass clef contains a dot and is labeled "Niente." The marking "(P. sempre)" is written in the left margin.

A handwritten musical notation in the bass clef showing a whole note with a sharp (F#) and a slur above it labeled "d.v."

Handwritten musical notation on a grand staff, starting with a double bar line and the marking "(8va)".

Handwritten musical notation on a grand staff. The treble clef contains notes: a quarter note with a flat (F), a quarter note with a sharp (F#), a quarter note with a flat (F), and a quarter note with a flat (F). The bass clef contains a whole note with a sharp (F#). A bracket above the bass clef contains a dot and is labeled "Niente." A watermark "NB noter This music is copyright protected" is visible over the notation.

A handwritten musical notation in the bass clef showing a whole note with a sharp (F#) and a slur above it labeled "l.v."

Handwritten musical notation on a grand staff, starting with a double bar line and the marking "(8va)".

Handwritten musical notation on a grand staff. The treble clef contains notes: a quarter note with a sharp (F#), a quarter note with a flat (F), and a quarter note with a flat (F). The bass clef contains a whole note with a sharp (F#). A bracket above the bass clef contains a dot and is labeled "Niente." The marking "pmp" is written vertically on the right side of the bass clef.