

Concertino for kvarttone-
gitar og slagverk. Opus 36 nr. 1.
B.F.



NB
noter

This music is copyright protected

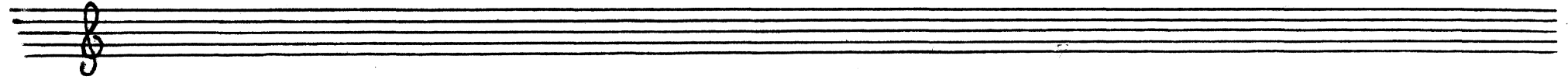


NB
noter

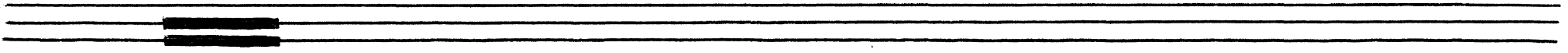
This music is copyright protected

1cm, ≈ 2sek. (Sp.t. e.a. 6m. 10s.)

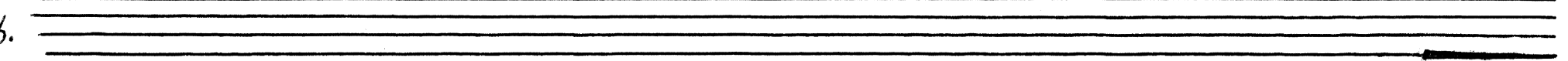
Gitar



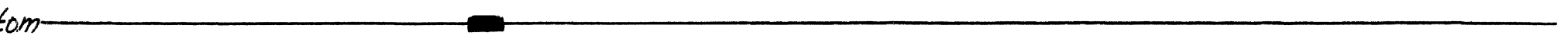
Triangoli



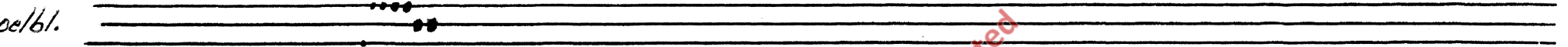
1 Cymb.



tom-tom

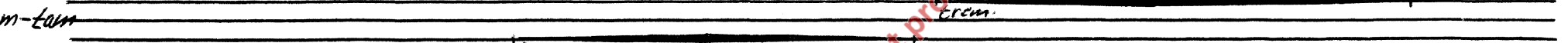


Tempelbl.

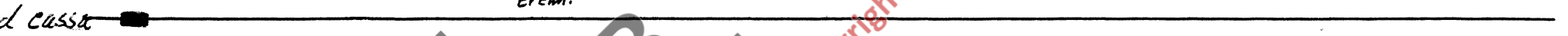


2

Gong, tam-tam



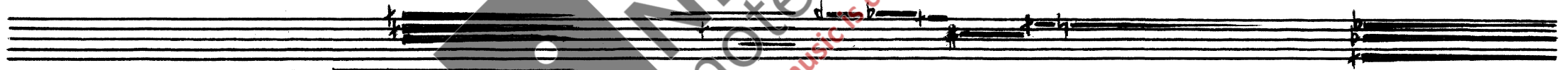
Grand cassa



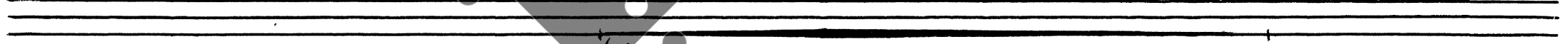
Erem.

Erem.

Git.

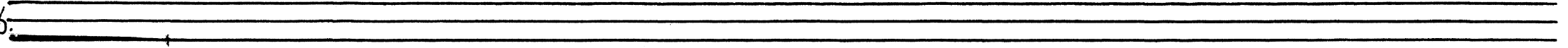


Trig.

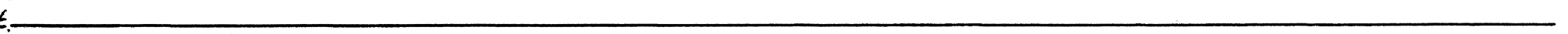


1

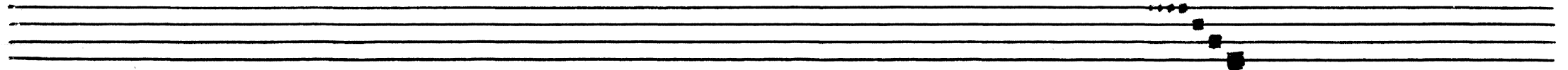
Cymb.



Tam-t.

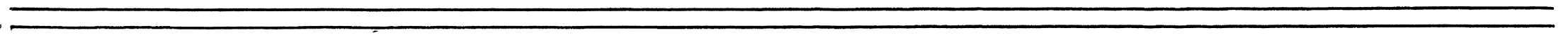


T. bl.



2

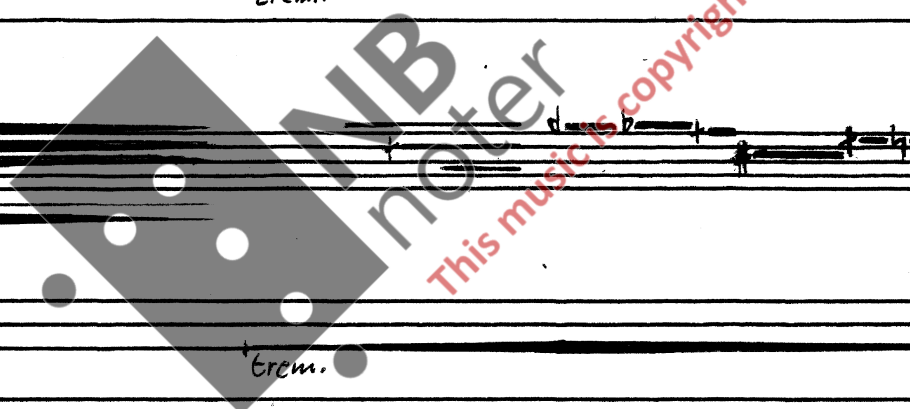
G, t-t.



Gr. c.



Erem.



Git. *trém.*

Tr.g.
1 *trém.*

Cymb. *trém.*

Tom-tom

Temp.bl.
2

G, t-t.

Gr. c.

Git.

Tr.g.
1

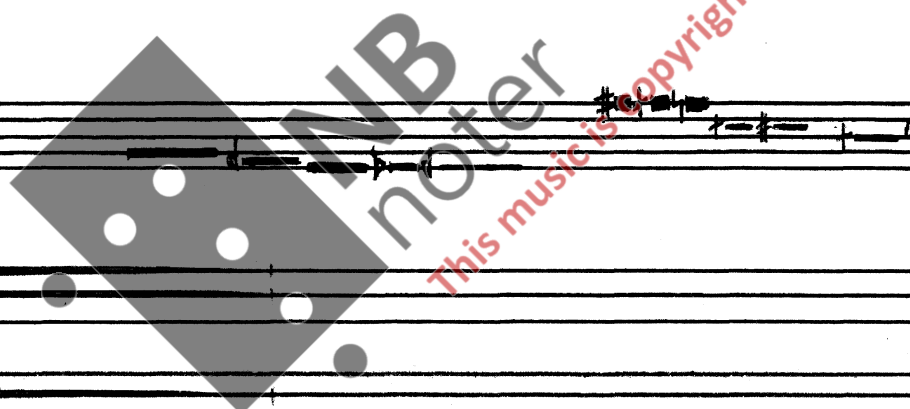
Cymb.

Tom-tom *trém.*

Temp.bl.
2

G, t-t.

Gr. c. *trém.*



Handwritten musical score for a rock band, consisting of two systems of staves. The instruments listed are:

- Git. (Guitar)
- Tr.g. (Trumpet)
- 1 (Drum)
- Cymb. (Cymbal)
- tom-tom (Tom-tom)
- Temp. bl. 2 (Tenor Saxophone)
- Gr. C. (Drum)

The score includes various musical notations such as notes, rests, and dynamic markings like *Erém.* (Crescendo). A large watermark is present in the center of the page:

NB
noter
This music is copyright protected

f *erem.*

Git.

erem.

Tr.g.

1

Cymb.

tom-tom

Temp.bl.

2

G.t-t.

Gr.c.

Gitar

erem.

erem.

Tr.g.

1

Cymb.

erem.

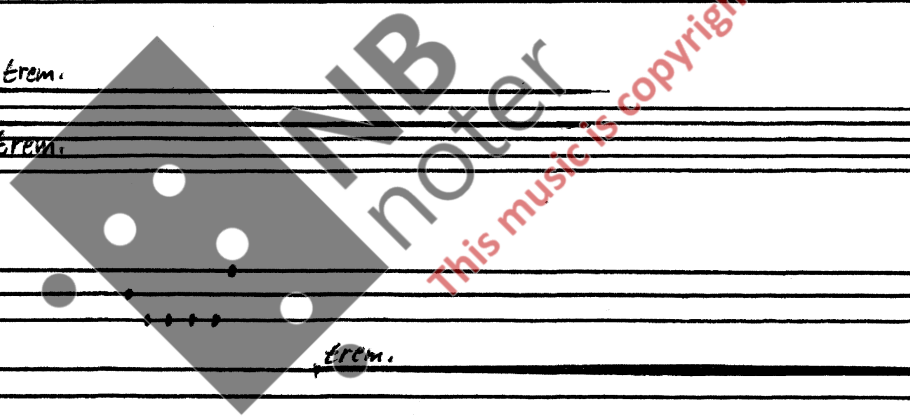
tom-tom

Temp.bl.

2

G,t-t

Gr.c.



Git. *Exem.*
Exem.

Tr.g.
1
Cymb.

tom-tom

Temp. bl.
2

S. t-t

Gr. c.





NB
noter

This music is copyright protected

Concertino for kvart-
tonegitar og slagverk.
Opus 36 nr. 2. B.F.



NB
noter

This music is copyright protected.



NB
noter

This music is copyright protected

1 cm. ≈ 2 sek. (sp. t. c. u. 6 min.)

Gitar



Triangoli

1 Cymb.

tom-tom

trem.

Tempelbl.

2

Gong, tam-tam

Grand cassa

Git.

Tr. g.

1

Cymb.

Tom-t.

T. bl.

2

G, t-t.

Gr. c.



Git.

Handwritten musical notation for guitar, including notes and rests.

Tr.g.

Handwritten musical notation for trumpet, mostly consisting of rests.

1

Cymb.

Handwritten musical notation for cymbal, consisting of horizontal lines representing sustained sounds.

Tam-t.

Handwritten musical notation for tam-tam, consisting of horizontal lines representing sustained sounds.

T. bl.

Handwritten musical notation for trombone, consisting of horizontal lines representing sustained sounds.

2

G, t-t.

Handwritten musical notation for guitar and tenor drum, consisting of horizontal lines representing sustained sounds.

Gr. c.

Handwritten musical notation for grand conga, consisting of horizontal lines representing sustained sounds.

Git.

Handwritten musical notation for guitar, including notes, rests, and a tremolo marking.

Tr.g.

Handwritten musical notation for trumpet, consisting of horizontal lines representing sustained sounds.

1

Cymb.

Handwritten musical notation for cymbal, consisting of horizontal lines representing sustained sounds.

Tam-t.

Handwritten musical notation for tam-tam, consisting of horizontal lines representing sustained sounds.

T. bl.

Handwritten musical notation for trombone, consisting of horizontal lines representing sustained sounds.

G, t-t.

Handwritten musical notation for guitar and tenor drum, consisting of horizontal lines representing sustained sounds.

Gr. c.

Handwritten musical notation for grand conga, consisting of horizontal lines representing sustained sounds.



Handwritten musical score for a percussion ensemble. The score is divided into two systems, each with seven staves. The instruments are: *Git.* (Guitar), *Tr. g.* (Triangle), *1* (Cymbal), *Cymb.* (Cymbal), *Tam-t.* (Tom-tom), *T. bl.* (T. Bl.), *2* (Cymbal), *Gr. c.* (Gr. c.), *Gr. c.* (Gr. c.), *Gr. c.* (Gr. c.), *Tr. g.* (Triangle), *1* (Cymbal), *Cymb.* (Cymbal), *Tam-t.* (Tom-tom), *T. bl.* (T. Bl.), *2* (Cymbal), *Gr. c.* (Gr. c.), *Gr. c.* (Gr. c.).

The notation includes various rhythmic symbols such as beams, dots, and horizontal lines. The word *trém.* is written above the first staff of the first system and above the last staff of the second system. A large watermark is present in the center of the page, consisting of a diamond shape with the letters *MNB* and the word *noter* below it. A diagonal red watermark reads *This music is copyright protected*.

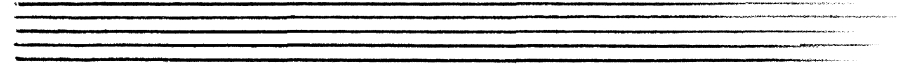
Handwritten musical score for a drum set, consisting of two systems of staves. The instruments listed are:

- Git. (Guitar)
- Tr.g. 1 (Tom-tom 1)
- Cymb. (Cymbal)
- tom-tom (Tom-tom)
- Temp.bl. 2 (Temp. bell 2)
- G, t-t (Gong, tom-tom)
- Gr.c. (Grande caisse)

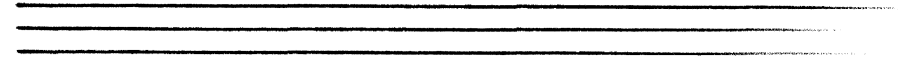
The score includes various musical notations such as beams, accents, and dynamic markings like *erem.* and *non erem.* A large watermark is present in the center of the page:

NB
noter
This music is copyright protected

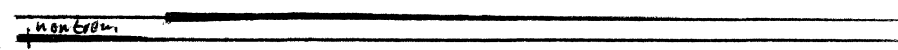
Git.



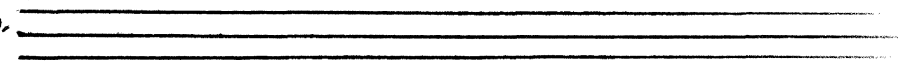
Tr. g.



1



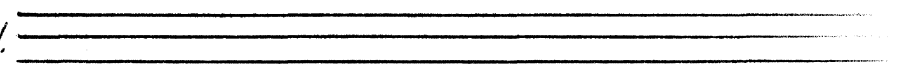
Cymb.



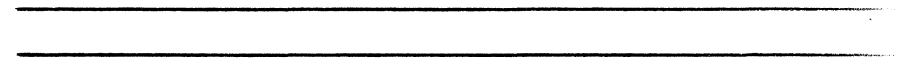
tom-tom



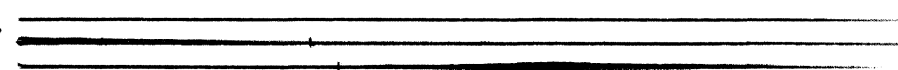
Temp. bl.



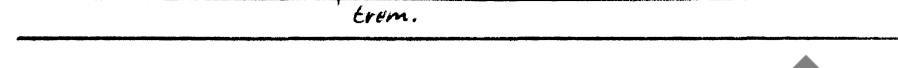
2



Git-t



Gr. c.



NB
noter

This music is copyright protected



This music is copyright protected

Concertino For Kvart-
tonegitar og slagverk.
Opus 36 nr. 3. Bjørn Fonjaard.



NB
noter

This music is copyright protected



NB
noter

This music is copyright protected

1cm. ≈ 2sek. (Sp. t. c. a. 6m. 30s.)

Gitar

1

Triangoli

Cymb.

Tom-tom

2

Tempelbl.

Gong, tam-tam

Gr. cassa

Git.

Tr.g.

1

Cymb.

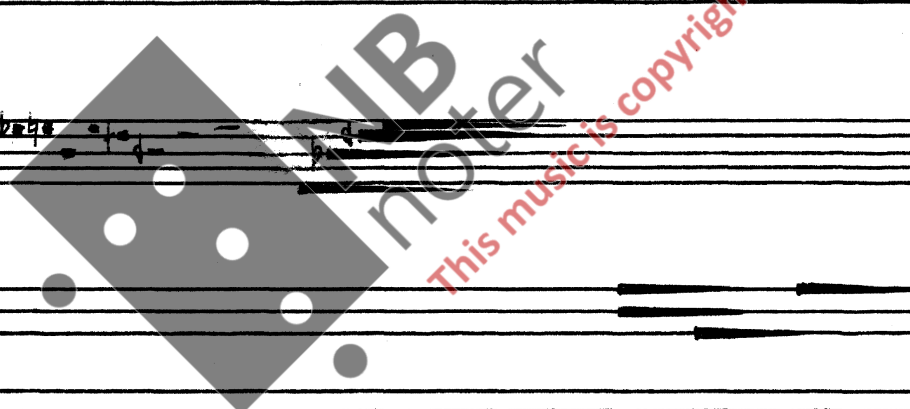
Tam-t.

Temp.bl.

2

G, t-t.

Gr. c.



Handwritten musical score for a rock band, featuring two systems of staves. The instruments listed are:

- Git. (Guitar)
- Tr.g. (Trumpet)
- Cymb. 1 (Cymbal 1)
- Tom-tom
- Temp.bl. 2 (Tambourine 2)
- Git-t. (Guitar)
- Gr.c. (Drum)

The score includes various musical notations such as stems, beams, and accents. The word "trem." (tremolo) is written above several notes in the Cymbal 1 and Tom-tom parts. The second system of staves includes a double bar line at the beginning of the Git-t. staff. A large watermark "MNB noter" is overlaid on the center of the page, and a red diagonal watermark "this music is copyright protected" is also present.

Handwritten musical score for a rock band, consisting of three systems of staves. The instruments are: Git. (Guitar), Tr.g. (Trumpet), Cymb. (Cymbal), Tom-tom, Temp.bl. (Trumpet), Gr.t. (Guitar), Gr.c. (Guitar), and another Git. (Guitar). The score includes various musical notations such as notes, rests, and dynamic markings like *trem.* and *6rem.*. A large watermark for "MNB noter" is present across the middle of the page, along with the text "This music is copyright protected".

System 1:

- Git.: Handwritten notes and rests.
- Tr.g.: Empty staff.
- Cymb. 1: Rests.
- Tom-tom: Rests, with *6rem.* marking.
- Temp.bl. 2: Rests.
- Gr.t.: Rests, with *trem.* marking.
- Gr.c.: Rests.

System 2:

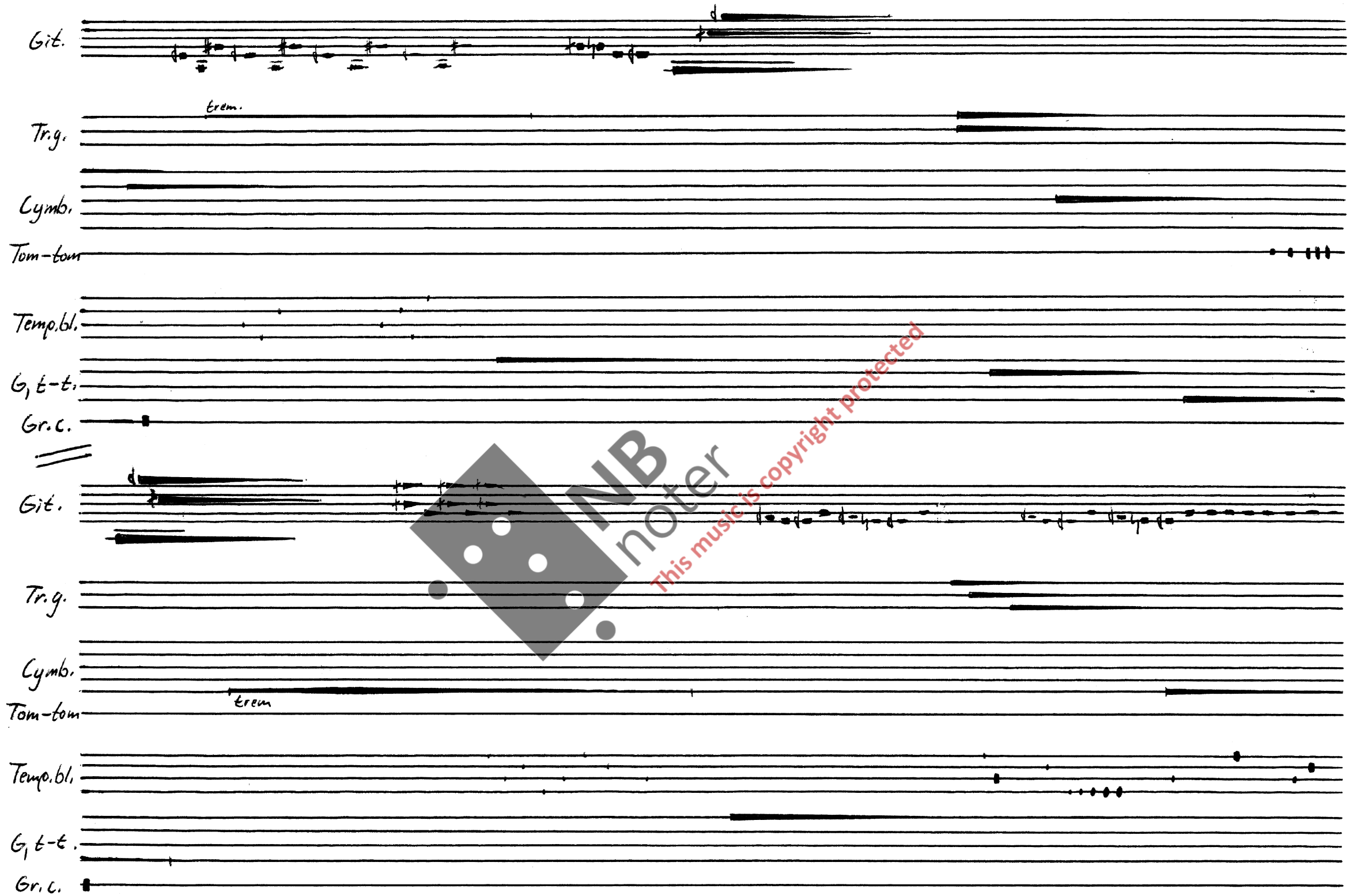
- Git.: Handwritten notes and rests.
- Tr.g.: Rests.
- Cymb. 1: Rests.
- Tom-tom: Empty staff.
- Temp.bl. 2: Empty staff.
- Gr.t.: Rests.
- Gr.c.: Rests, with *trem.* marking.

System 3:

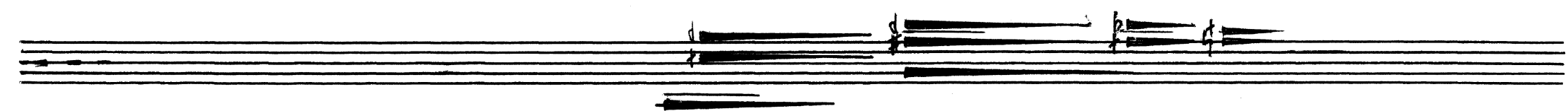
- Git.: Handwritten notes and rests.
- Tr.g.: Rests.
- Cymb. 1: Rests.
- Tom-tom: Empty staff.
- Temp.bl. 2: Empty staff.
- Gr.t.: Rests.
- Gr.c.: Rests, with *trem.* marking.

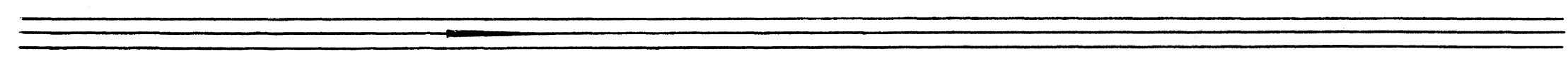
Handwritten musical score for a drum set and guitar. The score is divided into two systems, each with seven staves. The instruments are labeled on the left of each staff: *Git.*, *Tr.g.*, *Cymb.*, *Tom-tom*, *Temp.bl.*, *G, t-t.*, and *Gr.c.*

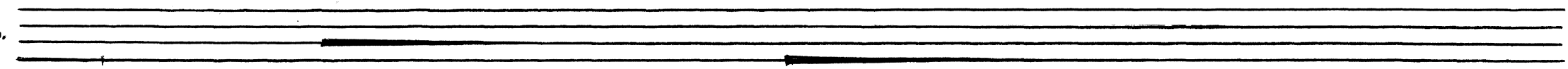
The first system includes a *trem.* (tremolo) marking above the *Tr.g.* staff and a *d* (drum) marking above the *Git.* staff. The second system includes a *trem* marking above the *Tom-tom* staff. The notation consists of various rhythmic symbols, including notes, rests, and beams, indicating specific drum and guitar parts.

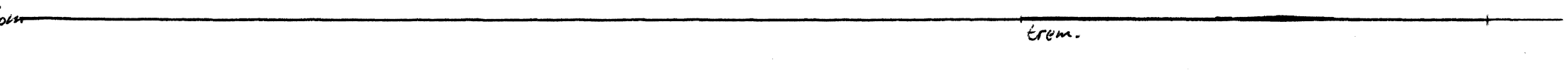


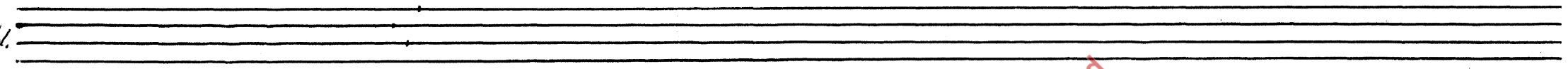
NB
noter
This music is copyright protected

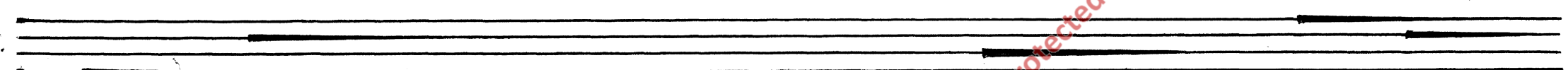
Git. 


Tr.g. 

Cymb. 


Tom-tom 


Temp.bl. 


Git-b. 


Gr.c. 


erem.

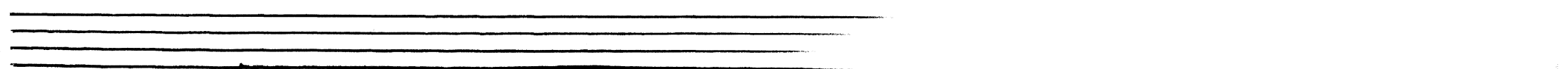
Git. 


Tr.g. 

Cymb. 

Tom-tom 

Temp.bl. 

Git-b. 

Gr.c. 

erem.

