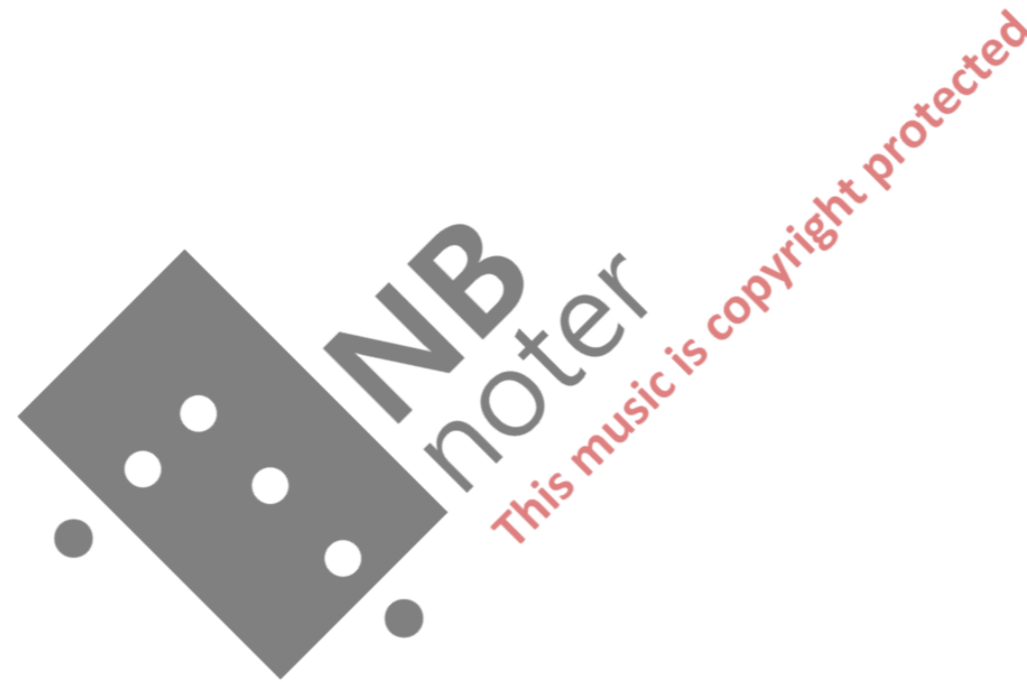


THE FALL

SAXOPHONE DOUBLE BASS ACCORDEON



Asbjørn Blokkum Flø 1999

Asbjørn Blokkum Flø

THE FALL

The Fall has borrowed its psychological structure from Albert Camus' novel by the same name (LA Chute) from 1957.

Musically the piece is about material that multiplies itself with mutations on all levels.

Yes, I am moving about. How could I remain in bed like a good patient? I must be higher than you, and my thoughts lift me up. Such nights, or such mornings rather (for the fall occurs at dawn), I go out and walk briskly along the canals. In the livid sky the layers of feathers become thinner, the doves move a little higher, and above the roofs a rosy light announces a new day of my creation.

-from THE FALL, Albert Camus

Notational explanation.

The saxophone uses the following signs:



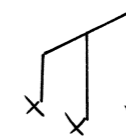
As Fast as possible.



Tongue pizz.



multiphonic.



play position without blowing.

Microtonal Notation:



1/8 tone up

1/4 tone up

3/8 tone up

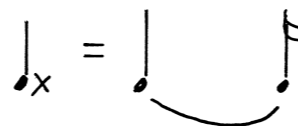
1/2 tone up

5/8 tone up

3/4 tone up

7/8 tone up

Any down arrows means 1/8 tone down. (as well as any arrow up means 1/8 tone up)



♩=62 7 32 (A) 6 8

THE FALL

10
16

①

tenorsaxophone in Bb

accordeon

double bass

8va

mf

8va

p

⑤

tenorsaxophone in Bb

accordeon

double bass

5 8

3 16

2 8

16

4

1 4

7 32

mf

pp

f

8va

p

mp

mf

sul pancia

ffp

pp

sul tasto

normale

7
52 (B)

6
8

4
8

10
16

tenorsaxophone
in Bb

11

1 2 3 4 5 6

8VA

5:4

4:3

7:8

8VA

fp

f

p

f

P

Mf

pp

PPP

5:4

Mf

f

p

accordeon

4:3

Mf

p

f

P

PPP

Mf

p

double bass

pizz

p

f

arco

5:4

4:3

7:8

pizz

arco

Mf

P

PPP

sul pont. → norm.

5:4

Mf

f

p

tenorsaxophone
in Bb

15

3:2

8VA

5:4

Mf

f

p

fp

f

Mf

p

pp

2

4

p

pp

accordeon

5:4

Mf

Mf

f

Mf

p

pp

Mf

f

Mf

p

pp

double bass

3:2

5:4

Mf

f

p

fp

f

Mf

f

norm

Mf

p

pp

→ sul pont.

4:5

3:2

p

pp

1 5 2 2 3 3
4 16 4 4 16 8

tenorsaxophone in Bb

20

f p

accordeon

pp f mf fpp f ff

double bass

mf p

sul pont. normale

tenorsaxophone in Bb

26

mf f p mf

accordeon

f pf pp pp ff mf p p mf p

double bass

mf p

2/4

7/16

2/4

5/16

2/4 (C)

tenorsaxophone in Bb

33

8VA

5:4A

3:5A

5:4A

8VA

pp f p

accordion

5:4A

f = p

f < ff > mf ff

pp

8VA

16VA

double bass

3:5A

p

normale

sul pont.

sul tasto

pp

norm f

pizz.

tenorsaxophone in Bb

38

5/16

2/4

3:5A

mf

f = p

mf

7:6A

4

3/4

accordion

16VA

3:5A

3:5A

7:6A

7:6A

double bass

3:5A

7:6A

7:6A

arco sul pont.

1 3 1 5 3 5
4 16 4 16 4 16

53

tenorsaxophone in Bb

mf

8va

3 16 : 5 16

3 16 : 5 16

pp

f

8va

3 16 : 5 16

7

7

7

7

7

7

7

f

double bass

pizz.

3 16 : 5 16

59

tenorsaxophone in Bb

f

mf

pp

ff

pp

mf

pp

mf

5 16

3 8

6 16

5 32

3 16

5 32

3 8

3 16

8va

16va

5 4

3 2

7 6

double bass

mf

p

arco

6

mf

mp

ff

f

3
16 3
4

3
16 2
4

5
16

r16VA

r16VA

67

tenorsaxophone
in Bb

Musical staff for tenorsaxophone in Bb, measures 67-71. Includes notes, rests, and dynamic markings.

r8VA pp f f pp r8VA pp ff pp

accordeon

Musical staff for accordeon, measures 67-71. Includes notes, rests, and dynamic markings.

pp p mf pp

double bass

Musical staff for double bass, measures 67-71. Includes notes, rests, and dynamic markings.

f

5
8

72

tenorsaxophone
in Bb

Musical staff for tenorsaxophone in Bb, measures 72-76. Includes notes, rests, and dynamic markings.

r8VA pp ff pp

accordeon

Musical staff for accordeon, measures 72-76. Includes notes, rests, and dynamic markings.

p mf pp

double bass

Musical staff for double bass, measures 72-76. Includes notes, rests, and dynamic markings.

f ff f

3
8

1 3
32 4

5
16

7
16

3
16

18VA

84

tenorsaxophone
in Bb

accordion

double bass

6:4R

3:2R

5:4R

11:7R

2/4 (G)

3/32 2/4

3/8

6/16

2/4 5:4R

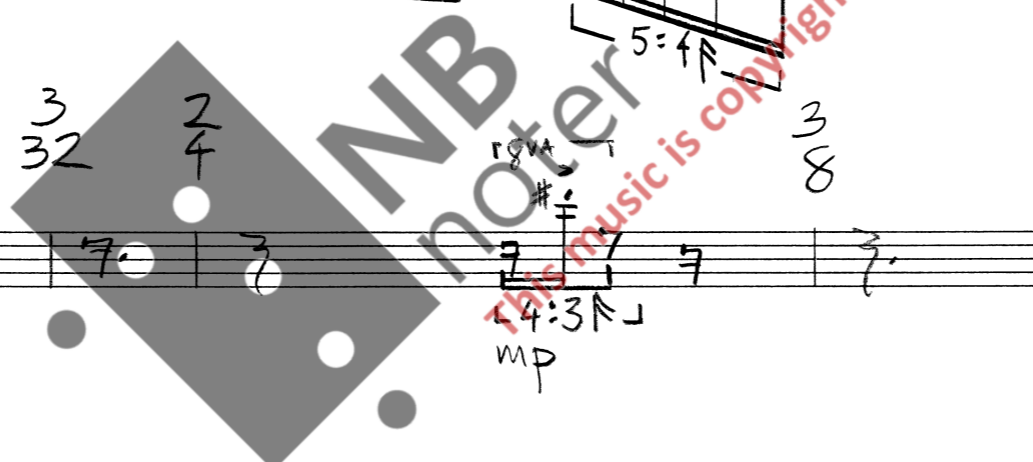
6/32

90

tenorsaxophone
in Bb

accordion

double bass



6 3 6
32 (H) 16 4

5
32

96

tenorsaxophone in Bb

mp ff (unison) f mp ppp

8VA 3:2 9:4 3:2

accordeon

pp mf f ff

3:2 9:4 3:2

double bass

mp

3:2 3:4 3:2

100

tenorsaxophone in Bb

mp f mp

8VA 32 2 4 5 16 3 8

3:2 8VA 2 4

accordeon

mp ff f mp

5:4 3:2 5:4

double bass

ff f mp

5:4 3:2 10

5
8

6
16 (j)

5
4

5
16

9
32

107

tenorsaxophone in Bb

mf p mf p mf

accordeon

mf mf mf

double bass

mp

5:4R 5:4R 7:4R 2:5R

112

tenorsaxophone in Bb

mf p mf pp ff mf

accordeon

mf p pp

double bass

p pizz

8
16

5
8

6:5R

