

Åsmund Feidje

ETÜDE

für Violoncello solo





Åsmund Feidje

Bogustaw Schaeffer zugeeignet

ETÜDE

für Violoncello solo

$\text{♩} = 86$

ff staccato sempre

p

Gliss.

ff staccato sempre

NB noter
This music is copyright protected

Handwritten musical notation on a bass clef staff. It features a series of chords and notes, with a 'p' dynamic marking under a bracketed section.

Handwritten musical notation on a bass clef staff. It includes a 'gliss' instruction, a 'f' dynamic marking, and a 'mf' dynamic marking.

Handwritten musical notation on a bass clef staff. It features a 'mp' dynamic marking, a 'f' dynamic marking, and a 'mf' dynamic marking.

Handwritten musical notation on a bass clef staff. It includes a 'p' dynamic marking, a 'pp' dynamic marking, a 'ppp' dynamic marking, and a '3' triplet marking. The tempo is marked 'Appassionato' and 'mp e cresc'.

Handwritten musical notation on a treble clef staff. It features a '3' triplet marking and a 'pp ma cantabile' dynamic marking.

Handwritten musical notation on a treble clef staff. It includes various accidentals and note values.



Handwritten musical notation on a bass clef staff. It begins with a dynamic marking of *mp* and a triplet of eighth notes. The music continues with a slur over several notes, followed by a dynamic marking of *sub p*. The piece concludes with a final chord.

Handwritten musical notation on a bass clef staff. It starts with a dynamic marking of *mp e cresc*. The notation includes a triplet of eighth notes, a quintuplet of eighth notes, and a glissando marking (*gliss*) over the final notes.

Handwritten musical notation on a bass clef staff. It begins with a dynamic marking of *f* and a slur. The notation includes a triplet of eighth notes, a dynamic marking of *pp*, and a section marked *pizz.* (pizzicato) with a dynamic marking of *ffff*. A large watermark is overlaid on the page.

Handwritten musical notation on a bass clef staff. It starts with a dynamic marking of *p* and a slur. The notation includes a dynamic marking of *pp* and a section marked *pizz.* (pizzicato). A large number '2' is written above the staff, and a '4' is written below it, possibly indicating a measure count or a specific section.

Handwritten musical notation on a treble clef staff. It begins with a dynamic marking of *p* and a slur. The notation includes a dynamic marking of *mp* and a section marked *pizz.* (pizzicato).

Handwritten musical notation on a bass clef staff. It starts with a dynamic marking of *mf* and a slur. The notation includes a dynamic marking of *mp* and a section marked *pp* (pianissimo).

arco *gliss (!)* *sempre* *pizz.* *mf cresc sempre*

5 *6* *6* *ff*

arco (# →) *fff possibile*

sub p sul pont

2 *4* *5* *5* *5* *5* *ord. mp* *p.a.p. cresc* *mf*

p.a.p. sul pont
spiccato e sul pont sempre

ord.

Senza misura
Sul A
legatissimo sempre

(sul A) sul D
Attacca possibile
poco accel... poco rit
Keep same spacing of hand throughout the whole glissando, thereby diminishing the intervals.

sul A(+D)
pp
sul pont
mf < f > mp < mf >
poco accel... rit sempre

sempre A D
gliss
mp 3

[senza A] *as fast as possible*

ord. mf 3 3 cresc.

(+C) not too fast

ff al niente PPPP p PPP

Molto cantabile
♩ = 60

ord. sf 3 4



pizz. *sost.* $\text{♩} = 86$ **2**/**4** *mf* **Con brio**

arco

pizz. *arco* **+D** (\sharp) \rightarrow (\flat) \rightarrow *p* *mp*

mf *f*

pizz. *mp* *mf* *mp*

pp **4**/**4** *sempre ff* **Col legno batt.**

(sempre C!)

gliss

pizz. arco

dolce, come eco

arco mp molto leggero

NB noter
This music is copyright protected

sul pont nervoso!

sfff

Molto Cantabile Sul D(+A)

ord. mf

SPRING-BOGEN Senza misura Right hand very fast Left hand slowly

staccatissimo gliss langsam am unten ca. 15''

Handwritten musical notation on a bass clef staff. It begins with a treble clef and a key signature of one sharp (F#). The tempo is marked *molto*. The dynamics are *ff* (fortissimo) and *p sul pont* (piano sul ponticello). A five-fingered scale is indicated with a bracket and the number 5. The instruction *springbogen* (spring bow) is written above a section of the staff, followed by *come sopra* (as above).

Handwritten musical notation on a bass clef staff. It features a *sul pont* section with a *70* marking. This is followed by an *ord.* (ordine) section marked *mp* (mezzo-piano). The piece concludes with a *f* (forte) dynamic.

Handwritten musical notation on a bass clef staff. It includes a section marked *mf* (mezzo-forte) with the instruction *acc. ... rit.* (accelerando ... ritardando). The dynamics then change to *p* (piano) and *mp* (mezzo-piano).

Handwritten musical notation on a treble clef staff. It starts with a *f* (forte) dynamic. The piece ends with a *p sul pont* (piano sul ponticello) section.

Handwritten musical notation in 3/4 time, marked *Molto cantabile* and $\text{♩} = 60$. The notation includes *p.a.p. ord.* (pizzicato alla prima ordine) and *mf* (mezzo-forte) dynamics. It features a triplet of eighth notes and a five-fingered scale marked with a bracket and the number 5.

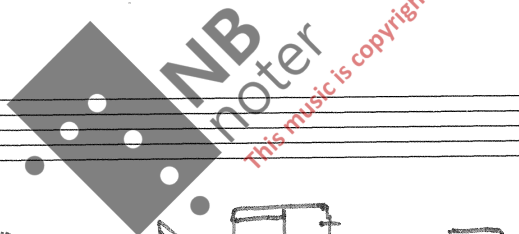




$\text{♩} = 86$
2/4
 Con brio

spicc. e sul pont sempre

ord. ff stacc. sempre



p

ff

mf

f

mf

p *p* *pp*

Appassionato

mp e cresc *ppma cantabile*

4

sub p sul pont

Senza misura

sul A o 3 *sub pp* *molto cantabile*

stark drücken

♩ D

3 3 p

(#) (4) pp ppp pppp ppppp

10'' WARTEN

