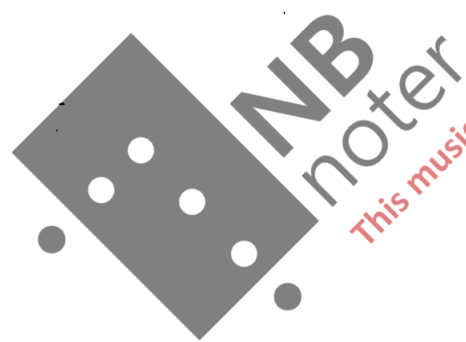


# OMEGA

for chamber ensemble

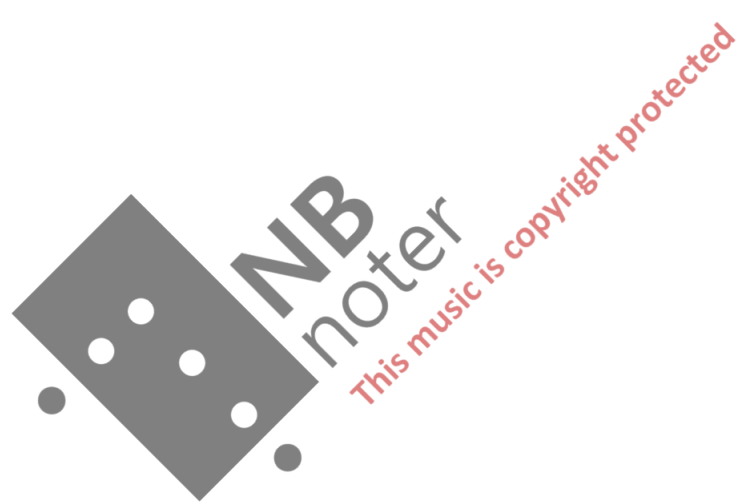
( flute, clarinet in bb, bassoon,  
horn in f, violin, viola & cello )



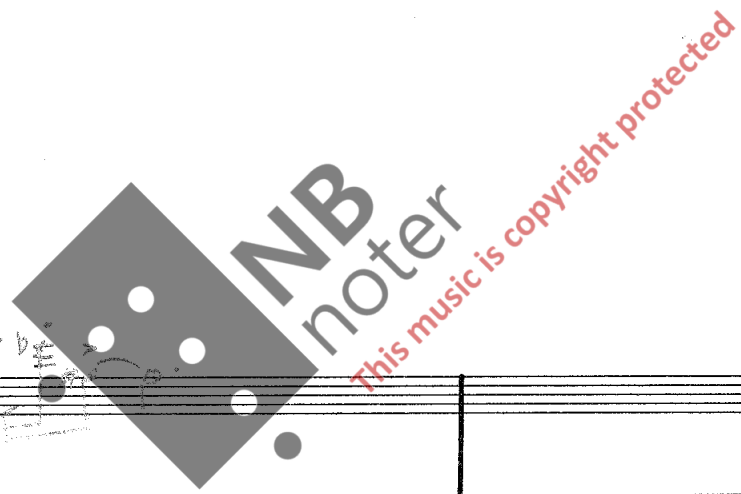
*This music is copyright protected*

Durata: ca. 7'

by P.-A. Emil sen



Handwritten musical score for the first system, measures 1-3. The score includes staves for Flute (Fl), Clarinet (Cl), Bassoon (Bsn), Horn (Hr), Violin (Vln), Viola (Vla), and Violoncello (Vlc). The time signature is 4/4. The key signature has one sharp (F#). The tempo is marked *Andante*. The score contains various musical notations including notes, rests, slurs, and dynamic markings such as *pp* and *ppp*. There are also some handwritten annotations and corrections.



Handwritten musical score for the second system, measures 4-7. The score includes staves for Flute (Fl), Clarinet (Cl), Bassoon (Bsn), Horn (Hr), Violin (Vln), Viola (Vla), and Violoncello (Vlc). The time signature is 4/4. The key signature has one sharp (F#). The score contains various musical notations including notes, rests, slurs, and dynamic markings such as *pp*, *ppp*, and *arco*. There are also some handwritten annotations and corrections.

FL  
CL  
Bsn  
Hr  
Vln  
Vla  
Vlc



A

A

FL  
CL  
Bsn  
Hr  
Vln  
Vla  
Vlc

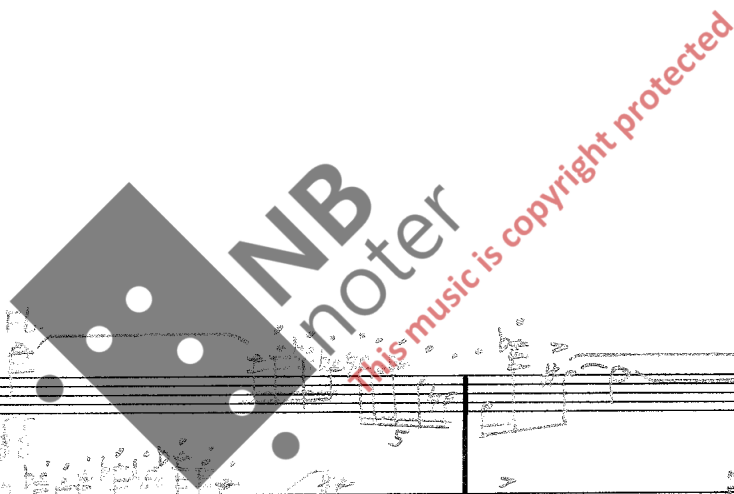
NB  
noter  
This music is copyright protected

FL  
CL  
Bsn  
Hr  
Vln  
Vla  
Vlc



FL  
CL  
Bsn  
Hr  
Vln  
Vla  
Vlc

FL  
CL  
Bsn  
Hr  
Vln  
Vla  
Vlc



FL  
CL  
Bsn  
Hr  
Vln  
Vla  
Vlc

ⓑ 5/4 J=50

FL

CL

Bsn

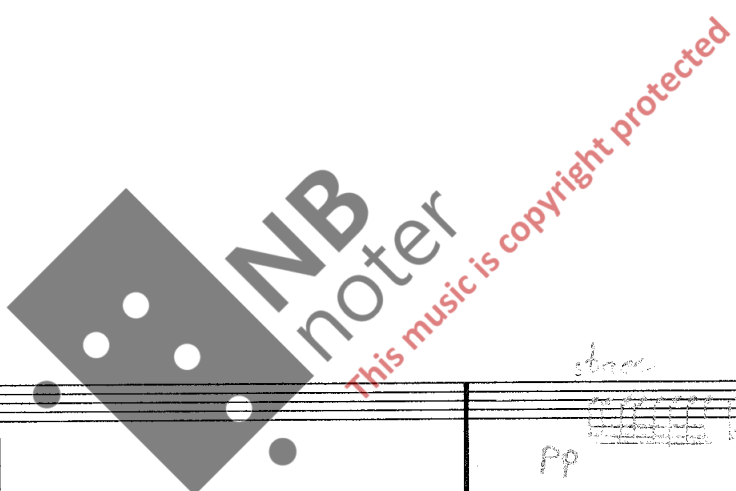
Hr

Vln

Vla

Vlc

ⓑ



FL

CL

Bsn

Hr

Vln

Vla

Vlc

FL  
CL  
Bsn  
Hr  
Vln  
Vla  
Vlc

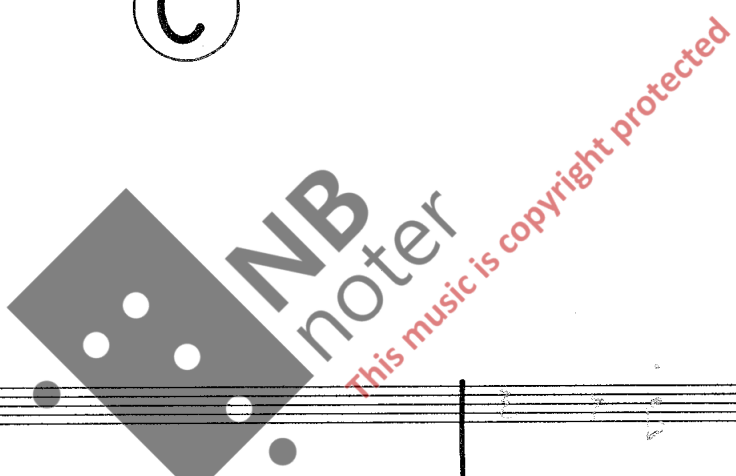
**C**  $\frac{4}{4}$   $\text{♩} \approx 90$

$\frac{4}{4}$   $\text{♩} \approx 90$

pp  $\overbrace{\quad\quad\quad}^3$

p mf pp P

**C**



FL  
CL  
Bsn  
Hr  
Vln  
Vla  
Vlc

pp

$\overbrace{\quad\quad\quad}^3$

pp #3!



FL  
CL  
Bsn  
Hr  
Vln  
Vla  
Vlc

Handwritten annotations in the first system include:  
- Flute: *pp* with a triplet marking.  
- Violin: *pp* with a slur and *mp* later.  
- Viola: *mf*, *sf*, and *mp* with various slurs and markings.  
- Violoncello: *mf* with a triplet marking.



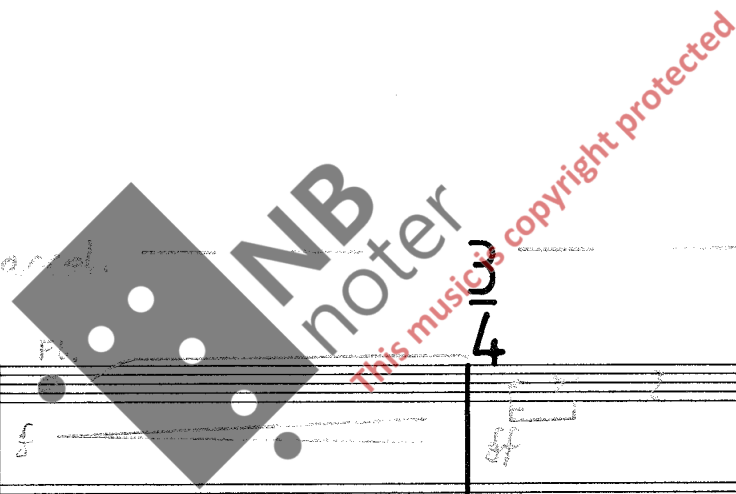
D

D

FL  
CL  
Bsn  
Hr  
Vln  
Vla  
Vlc

Handwritten annotations in the second system include:  
- Viola: *sub point.*, *pp*, *p*, and *pp* with slurs.  
- Violoncello: *pp*, *p*, and *pp* with slurs.

FL  
CL  
Bsn  
Hr  
Vln  
Vla  
Vlc



FL  
CL  
Bsn  
Hr  
Vln  
Vla  
Vlc

Handwritten musical score for the first system, measures 1-3. The staves are labeled on the left: Fl (Flute), Cl (Clarinet), Bsn (Bassoon), Hr (Horn), Vln (Violin), Vla (Viola), and Vlc (Violoncello). The score includes various musical notations such as notes, rests, and dynamic markings. A large circled 'E' is positioned above the staff lines at the end of the first measure. Handwritten annotations include 'rit' and 'ff'.



Handwritten musical score for the second system, measures 4-7. The staves are labeled on the left: Fl, Cl, Bsn, Hr, Vln, Vla, and Vlc. The score continues with musical notation and dynamic markings. A circled 'E' is positioned above the staff lines at the end of the second measure. Handwritten annotations include 'rit' and 'pp'. The time signature '4/4' is written vertically on the right side of the page.

FL  
CL  
Bsn  
Hr  
Vln  
Vla  
Vlc

Handwritten annotations: R. A. B. A., p, fp, pp, 14/4, circled F above measure 1.



FL  
CL  
Bsn  
Hr  
Vln  
Vla  
Vlc

Handwritten annotations: pp, p, f, circled F above measure 5, circled F below measure 8.

Watermark: NB noter, This music is copyright protected

FL  
CL  
Bsn  
Hr  
Vln  
Vla  
Vlc

Handwritten notes: *p*, *pp*, *ff*

FL  
CL  
Bsn  
Hr  
Vln  
Vla  
Vlc

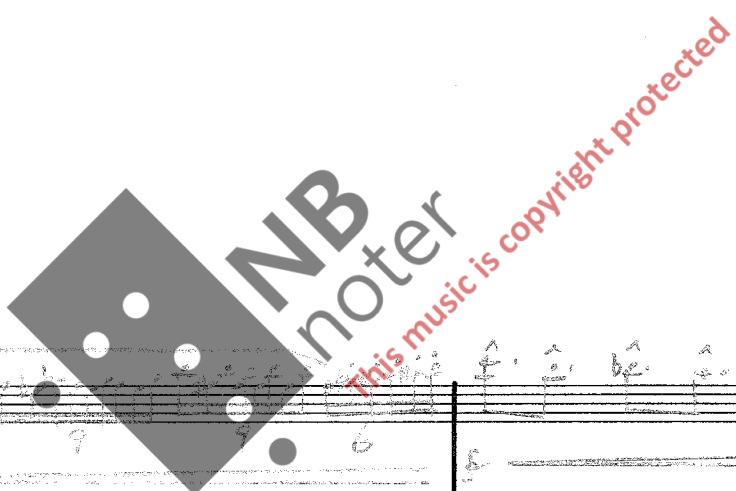
Handwritten notes: *p*, *pp*, *con sord.*, *ppp*

Musical score for the first system, measures 1-4. The score includes staves for Flute (FL), Clarinet (Cl), Bassoon (Bsn), Horn (Hr), Violin (Vln), Viola (Vla), and Violoncello (Vlc). The Flute part begins with a melodic line marked *n.* and *p*. The Violin part has a melodic line marked *n.* and *pp*. The Violoncello part has a melodic line marked *pp*. There are dynamic markings *pp* at the beginning and *pp* in the second measure.



Musical score for the second system, measures 5-8. The score includes staves for Flute (FL), Clarinet (Cl), Bassoon (Bsn), Horn (Hr), Violin (Vln), Viola (Vla), and Violoncello (Vlc). The Flute part has a melodic line with a circled **H** above it. The Bassoon part has a melodic line with a circled **H** above it. The Violin part has a melodic line with a circled **H** above it. The Violoncello part has a melodic line with a circled **H** above it. There are dynamic markings *pp* and *mp* throughout the system. Handwritten notes include *sul pont.*, *~ al sul tasto*, *senza cord.*, and *cord.*

FL  
CL  
Bsn  
Hr  
Vln  
Vla  
Vlc



FL  
CL  
Bsn  
Hr  
Vln  
Vla  
Vlc

918

FL  
CL  
Bsn  
Hr  
Vln  
Vla  
Vlc

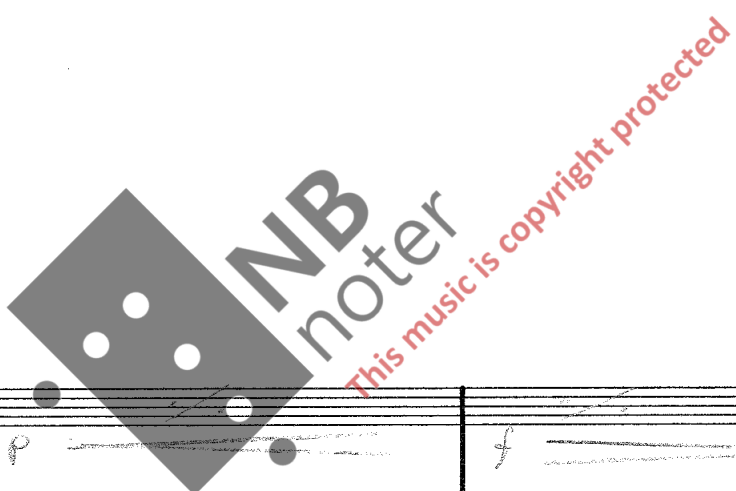
Handwritten musical score for measures 9-12. The score includes staves for Flute (FL), Clarinet (CL), Bassoon (Bsn), Horn (Hr), Violin (Vln), Viola (Vla), and Violoncello (Vlc). Measure 9 features a dynamic marking of *mp* for the Flute. Measure 10 has *pp* for the Horn and *fp* for the Violin. Measure 11 has *mf* for the Clarinet. Measure 12 has *mf* for the Bassoon. A double bar line is present at the end of measure 12. A large handwritten '9' is at the top left of the first staff.

FL  
CL  
Bsn  
Hr  
Vln  
Vla  
Vlc

Handwritten musical score for measures 13-16. The score includes staves for Flute (FL), Clarinet (CL), Bassoon (Bsn), Horn (Hr), Violin (Vln), Viola (Vla), and Violoncello (Vlc). Measure 13 has a dynamic marking of *p* for the Flute. Measure 14 has *pp* for the Bassoon and *sf* for the Horn. Measure 15 has *pp* for the Clarinet and *pp* for the Bassoon. Measure 16 has *sf* for the Horn and *sf* for the Viola. A double bar line is present at the end of measure 16. A large handwritten '13' is at the top left of the first staff. A large handwritten '14' is at the bottom left of the first staff. A large handwritten '15' is at the bottom left of the second staff. A large handwritten '16' is at the bottom left of the third staff.



Handwritten musical score for the first system, featuring staves for Flute (Fl), Clarinet (Cl), Bassoon (Bsn), Horn (Hr), Violin (Vln), Viola (Vla), and Violoncello (Vlc). The score includes dynamic markings such as *pp*, *p*, *f*, and *ppp*, and tempo markings like *♩ ≈ 120*. The notation is dense with various musical symbols and annotations.



Handwritten musical score for the second system, continuing the instrumentation from the first system. It includes dynamic markings like *f*, *p*, *ppp*, and *ff*, and features various musical notations and annotations.

FL  
CL  
Bsn  
Hr  
Vln  
Vla  
Vlc

ppp  
p  
f  
n.  
ppp  
p  
f  
pp  
sub pont.  
pp  
mf  
pp  
ppp



**NB**  
noter  
This music is copyright protected

Ⓧ

FL  
CL  
Bsn  
Hr  
Vln  
Vla  
Vlc

p  
ppp  
p  
f  
ppp  
f  
f  
expansive  
b p.  
3  
3  
p

FL  
CL  
Bsn  
Hr  
Vln  
Vla  
Vlc

FL  
CL  
Bsn  
Hr  
Vln  
Vla  
Vlc

rit. ←  
stacc. ←

FL

ff

cresc.

S.m.

Senza misura

1

16"

Musical score for the first section, measures 1-16. Instruments include Flute (Fl), Clarinet (Cl), Bassoon (Bsn), Horn (Hr), Violin (Vln), Viola (Vla), and Violoncello (Vlc). The score is in 3/4 time and includes handwritten annotations such as '112 <math>1/4</math> <math>1/4</math> <math>1/4</math>' and 'ff'.

2

16"

Musical score for the second section, measures 1-16. Instruments include Flute (Fl), Clarinet (Cl), Bassoon (Bsn), Horn (Hr), Violin (Vln), Viola (Vla), and Violoncello (Vlc). The score is in 3/4 time and includes handwritten annotations such as '3)', '112 <math>1/4</math> <math>1/4</math> <math>1/4</math>', and 'p'.

1. Choose a tempo between these limits.
2. Stop abruptly.
3. Go suddenly to next box

3

8'

Fl

Cl

Bsn

Hr

Vln

Vla

Vlc

4

8''

Fl

Cl

Bsn

Hr

Vln

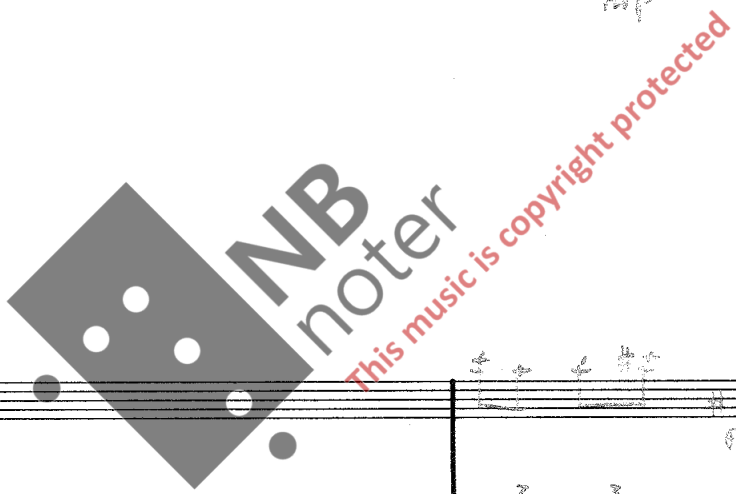
Vla

Vlc

5  $\frac{4}{4}$  *Andante*

FL FL FL

Fl  
Cl  
Bsn  
Hr  
Vln  
Vla  
Vlc



FL FL FL

Fl  
Cl  
Bsn  
Hr  
Vln  
Vla  
Vlc

Edw. Verh Oct. 84  
rev. nov. 87