

Eivind Buene

Objects of Desire

(2000)

**for Fender Rhodes electric piano
and ensemble**

To Christian Wallumrød and Oslo Sinfonietta

Score

Instrumentation

Flute (doubling Piccolo)

Oboe

Clarinet

Bass Clarinet

Tenor Saxophone

Trumpet

Trombone

Guitar

2 Percussionists

Violin

Viola

Violoncello

String Bass

Solo: Fender Rhodes Electric Piano

Durata: 30'

Instrumental parts available on hire

Fl piccolo
C.1
BCl
Ten
Trp
Trb
Guit.

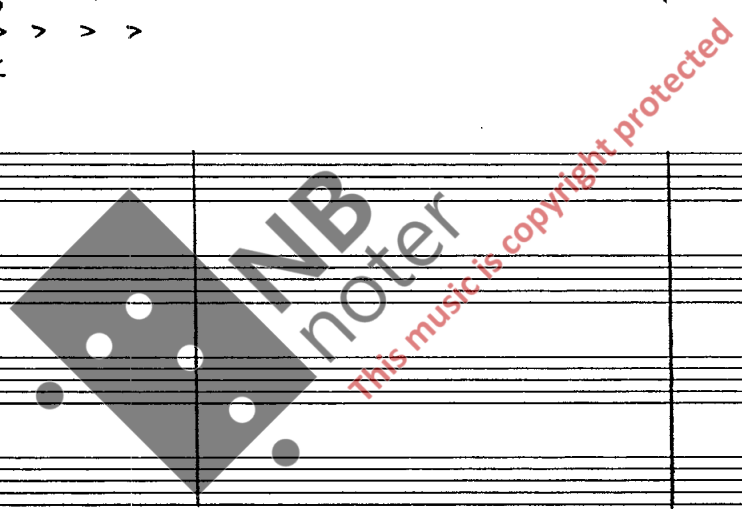
P1
P2

3/4 = 58 2/4 3/4 2/4

* Chr.

Vn
Va
Vc
Cb

* Christian Wallumrød, mf Fender Rhodes



Fl piccolo
C.1
Bcl
Ten
Trp
Trb
Guit.
P1
P2
Chr.

Vn
Va
Vc
Cb

NB noter
This music is copyright protected

Fl

C.I

Bcl

Ten

Trp

Trb

Amf

Handwritten musical score for woodwinds and brass instruments. The instruments listed are Flute (Fl), Clarinet in Bb (C.I), Bass Clarinet (Bcl), Tenor Saxophone (Ten), Trumpet (Trp), and Trombone (Trb). The score is written in treble clef for most instruments and bass clef for Trombone. It features various musical notations such as slurs, ties, and dynamic markings (mp, p, mf, pp, f). Fingerings and articulations are indicated with numbers and symbols like 'tr' and '>'. The piece is in 4/4 time.

P1

P2

Chr.

Vn

Va

Vc

Cb

②

Handwritten musical score for percussion and strings. The instruments listed are P1 (Percussion 1), P2 (Percussion 2), Chroma (Chr.), Violin (Vn), Viola (Va), Violoncello (Vc), and Contrabass (Cb). P1 and P2 parts include specific percussion notation like 'cym' (cymbal) and 't.b' (tom-tom). The string parts (Vn, Va, Vc, Cb) are written in treble and bass clefs and include dynamic markings (mf, f) and articulations. A 'Damp!' instruction is present above the P1 part. The score is in 4/4 time.

NB: noter
This music is copyright protected

Fl
C.1
Bcl
Ten

5:4
p
mf
5
mf
mp
mf
f
mf

3
6
6
6

furiOSO sub.

Trp
Trb
Guit

mf
f
sfz pp
f
sfz pp
mp
mf
f
mf

3
3
5
3
3
6
3
5
3
5
5

mf
f
mf
f

P1
P2

tms
log

f
mf
f
mf
f

4
2
4
mf
f
5
4

(both sticks)

Vn
Va
Vc
Cb

f
mf
f
mf
f
mf
f

norm
molto sul pont.
molto sul
tasto

6
6
6
6
6
6
6
6

5
5

10

Fl

C.I.

Bcl

Ten

Trp

Trb

Aut

P1

P2

Chr.

Vn

Va

Vc

Cb

④

Chr.

Vn

Va

Vc

Cb

④

Handwritten musical score for a symphony orchestra. The score is divided into two systems, each with two measures. The instruments listed on the left are: Fl (Flute), Cl (Clarinet), BCl (Bass Clarinet), Ten (Tenor), Trp (Trumpet), Trb (Trombone), Unit (Unit), P1 (Piano 1), P2 (Piano 2), Chr. (Chorus), Vn (Violin), Va (Viola), Vc (Violoncello), and Cb (Contrabass). The score includes various musical notations such as notes, rests, dynamics (pp, mp, mf, p, f, sfz), articulation (accents, slurs), and fingerings (5, 6, 3, 4). A large watermark "NB noter" is overlaid on the score, with the text "This music is copyright protected" written diagonally across it. A box labeled "Log" is present in the P1 part. The time signature changes from 5/4 to 4/4 and then to 2/4. The bottom right corner contains a circled number "5".

18

Fl

C.l

Bcl

Ten

Trp

Trb

Guit

P1

P2

Chr

Christian ad lib. (2-4')



This music is copyright protected

21

Fl

C.I

Bcl

Ten

Trp

Trb

Unit

P1

P2

Chr

Vn

Va

Vc

Cb

⑧

pp

fzpp

mp

f

fzmp

mf

pp

mp

mf

sffz

cym

vib

mf

mf

fzmf

fzmf

fzmf

fzmf

mf

p

p

p

sffz

fz

fz

fz

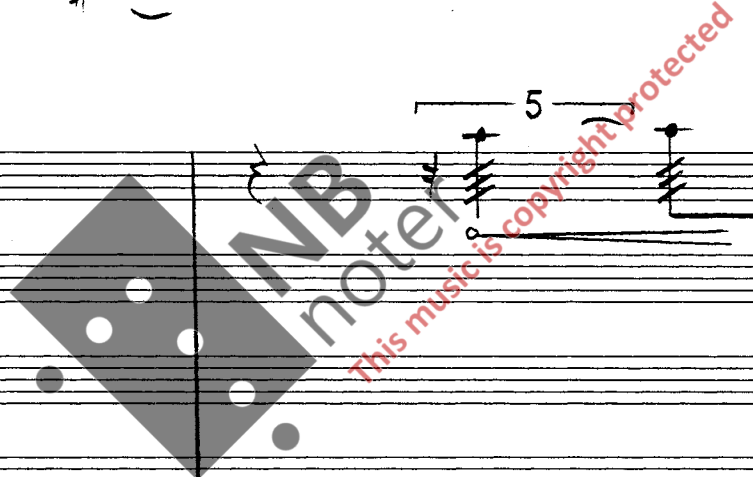
fz

fz

fz

$\frac{3}{4}$ ♩ = 48

$\frac{2}{4}$



Fl
C.l
Bcl
Ten
Trp
Trb
Cmtr

Musical score for woodwinds and brass instruments. The instruments listed are Flute (Fl), Clarinet (C.l), Bass Clarinet (Bcl), Tenor Saxophone (Ten), Trumpet (Trp), Trombone (Trb), and Cornet (Cmtr). The score includes complex passages with triplets, quintuplets, and various dynamics such as *mf*, *ff*, *f*, and *pp*.

ⓐ (aliss while tapping on G string)

P1
P2
Chr.

Musical score for percussion instruments. The instruments listed are P1 (Cym, tb) and P2 (Log). The score shows rhythmic patterns and dynamics such as *mf* and *mp*.

Vn
Va
Vc
Cb

Musical score for string instruments. The instruments listed are Violin (Vn), Viola (Va), Violoncello (Vc), and Contrabasso (Cb). The score features complex bowing techniques such as *bva*, *bow rit**, and *bow on br.*, along with various dynamics and articulation marks.

28

Fl

C1

Bcl

Ten

Trp

Trb

Amf

P1

P2

Chr.

Vn

Va

Vc

Cb

⑩

pp

mp

p

mf

ff

5:4

7:5

arco

pizz

GC

WB

This music copyright protected

30

Fl

C1

Bcl

Ten

Trp

Trb

Amf

P1

P2

Chr.

Vn

Va

Vc

Cb

mp

p

ff

f

mf

pp

sfz

fp

f

3

5

6

3:2

vib

5

4

3

4

11

32

Fl

C1

Bcl

Ten

Trp

Trb

Cmf

Detailed description of the score: This section contains the first six staves of the score. The Flute (Fl) staff starts with a rest and a dynamic marking of *fz* with an accent. The Clarinet (C1) staff has a dynamic marking of *p* followed by *mf*. The Bass Clarinet (Bcl) staff features dynamics of *mf*, *f*, and *p*, along with triplet markings. The Trombone (Trb) staff has dynamics of *p*, *mp*, and *f*. The Saxophone (Cmf) staff has a dynamic marking of *mf*. The Trumpet (Trp) staff has a dynamic marking of *mf*. The Trombone (Trb) staff also has a dynamic marking of *f*. The Saxophone (Cmf) staff has a dynamic marking of *mf*. The score includes various musical notations such as dynamics (*p*, *mf*, *f*, *fz*), articulation (accents), and fingerings (3, 5).

P1

P2

Chr.

Detailed description of the score: This section contains the last three staves of the score. The Piano 1 (P1) staff is empty. The Piano 2 (P2) staff has a 4/4 time signature and dynamics of *mp* and *mf*. The Chroma (Chr.) staff is empty. The score includes various musical notations such as dynamics (*mp*, *mf*) and a 4/4 time signature.

Vn

Va

Vc

Cb

⑫

Detailed description of the score: This section contains the last four staves of the score. The Violin (Vn) staff has dynamics of *mf* and *norm.*. The Viola (Va) staff has dynamics of *norm.* and *p*. The Violoncello (Vc) staff has dynamics of *f* and *ff*. The Contrabass (Cb) staff has a dynamic marking of *ff*. The score includes various musical notations such as dynamics (*mf*, *f*, *ff*, *norm.*, *p*), articulation (accents), and fingerings (3, 5). A circled number 12 is present at the bottom left.

①

Ten *sfz pp*

P1 *wb tb Log*

P2 *trms G.C. Log*

Cb

②

Ten

P1 *wb tb Log*

P2 *trms G.C. Log*

Cb

3Cl *ff*

Cont

15"

15"

#

(Christian ad lib)

③

Aggressively

Ten

Trp

Trb

f

fp

fz

2"

P1

P2

Cb

Bcl

Cont

④

Ten
Trp
Trb

$\text{♩} = 144$

3:2

f *fz* *fz*

sfz *pp* *mp*

P1

vib *fb* *log*

P2

G.C. log

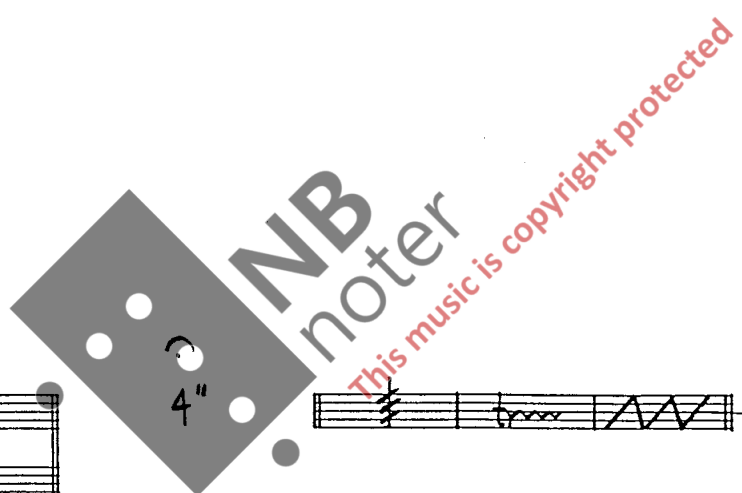
Lb

Bcl

Guit

==

==



⑤

Ten
Trp
Trb

mfp *sfz*

senza colore

F1
Cl
Bcl
Cb

p *p#* *p* *p*

P1

vib *fb*

P2

G.C. log

Guit

34

Fl Alto
fz fz f fz

Cl
fz fz f fz

Bcl
fz fz f fz

Ten
fz fz f fz

Trp
c.s.
p # # b b # #

Trb
c.s.
p mp fmp

Unit
pp

P1
mf log

P2
mf log

5/4 ♩ = 72

marcato f mf f 2/4

Vn
f mp p

Va
f mp p

Vc
f mp p

Cb
f mp

36

Flute (Fl): f , fz , ff , mp

Clarinet (Cl): f , ff , p , mf

Bassoon (Bcl): f , mp , mf , mp , p , mf , mp

Tenor Saxophone (Ten): f , mp , mf , mp , mf , p

Trumpet (Trp): f , mp , fzp

Trombone (Trb): f , mp , fzp

Cornet (Curt): mf , fz , $ms. (p)$

Flute (Fl): Log , LYM

P1: mf

P2: Log , mf , sb

2/4, 4/4, 2/4

Chr.

Violin (Vn): f , mf , $fzmf$, ff , mp , mp , *molto sul part.*

Viola (Va): f , mf , $fzmf$, ff , mp , *molto sul part.*, mf

Violoncello (Vc): f , mf , $fzmf$, ff , mp , *molto sul part.*, mp

Contrabasso (Cb): f , mf , $fzmf$, ff , mp , *molto sul part.*, mp

3:2

(14)

44

Fl

C1

Bcl

Ten

Trp

Trb

Umt

P1

P2

3/4

4/4

Chr.

Vn

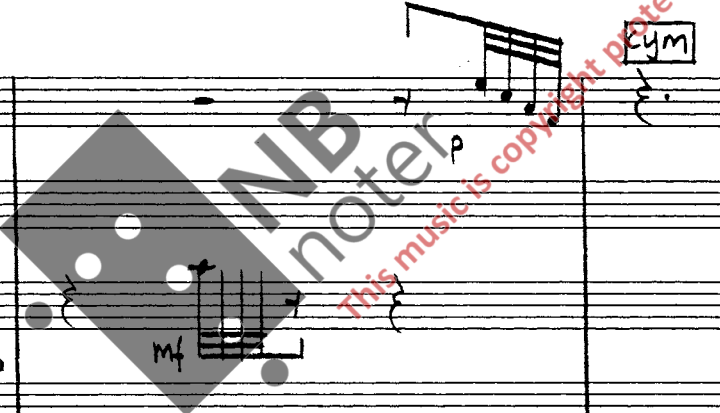
Va

Vc

Cb

(16)

Handwritten musical score for a full orchestra. The score includes parts for Flute (Fl), Clarinet 1 (C1), Bass Clarinet (Bcl), Trombone (Ten), Trumpet (Trp), Trombone (Trb), Upright Bass (Umt), Percussion 1 (P1), Percussion 2 (P2), Chroma (Chr.), Violin (Vn), Viola (Va), Violoncello (Vc), and Contrabass (Cb). The score is marked with various dynamics (f, mp, p, mf, ppp, m.s.p., ff) and articulations (accents, slurs, ties). It features complex rhythmic patterns, including quintuplets, triplets, and 3:2 and 6:4 ratios. A large watermark 'NB noter' is visible across the middle of the page.



Fl I 47 fz pp mf

Cl I #

Bcl # fz

Ten $3:2$ 3 fz $3:2$

Trp fz $3:2$

Trb fz mf f

Clm7 pp (thumb) $l.v.$ ppp mp $3:2$

P1 mf fz $damp!$ **G.C.** $3:2$

P2 f mf fz

Chr

Vn $fzpp$ 3 $5:4$ $fzpp$ fz $3:2$ $fzmf$

Va $fzpp$ 3 $5:4$ $fzpp$ fz $3:2$ $fzmf$

Vc $fzpp$ 3 $5:4$ $fzpp$ fz $3:2$ $fzmf$

Cb $fzpp$ $5:4$ $fzpp$ fz $3:2$ $fzmf$

50

Fl

C1

Bcl

Ten

Trp

Trb

Unit

mp

pp

con sordin

m.s. mp

G

E

PI

P2

cym

l.v.

(sizzle)

f

mp

p

5

4

3

4

Chr

Vn

Va

Vc

Cb

PPP

p

mf c.l.b. jeté

mp

PPP

52

Fl

C-1

Bcl

Ten

Trp

Trb

Aut.

P1

P2

Chr.

Vn

Va

Vc

Cb

ppp (slow fluctuations in pitch)

mf

f

p

mp

sfz

log

vib

3/4

4/4

3/4

19

Fl
C.1
Bcl
Ten
Trp
Trb
Aanf

pp fz pp fz pp fz
pp fz pp fz
fz pp fz mf
fz pp fz
mf fz
mf fz
f ppp (thumb)

gva
gva
mf
gva
mf
mf

6
3

P1
P2

mf
f
P
f

wb

3/4 4/4 3/4 4/4

Chr.

Vn
Va
Vc
Cb

sfz p sfz
sfz p sfz
sfz p sfz
sfz p sfz mp
sfz p sfz mp
sfz p sfz mp

gva
b.e.
e.
b.e.

(h.o.)
(h.o.)
(o.)
(h.o.)

58

Fl

C.1

Bcl

Ten

Trp

Trb

Clarinet

P1

P2

Chr.

Vn

Va

Vc

Cb

Bcl $\text{♩} = 72$
Guit

Measures 1-4 for Bcl and Guit. Bcl part includes fingerings 6, 7, 6, 5, 6, 6, 3, 3 and dynamics p. Guit part includes fingerings 6, 6, 6, 6, 3, 3, 5 and dynamics p.

Measures 5-8 for Bcl and Guit. Bcl part includes fingerings 6, 6, 5, 7, 3 and dynamics p. Guit part includes fingerings 6, 6, 3, 3, 3, 6 and dynamics p.

Bcl
Guit

Measures 9-12 for Bcl and Guit. Bcl part includes fingerings 6, 6, 6, 6, 6, 9 and dynamics p. Guit part includes fingerings 6, 5, 2, 3, 6, 3 and dynamics p.

Measures 13-16 for Bcl and Guit. Bcl part includes fingerings 5, 7, 3, 6 and dynamics p. Guit part includes fingerings 3, 6, 3, 6 and dynamics p.

Ten
Vib

Measures 17-20 for Ten and Vib. Ten part includes fingerings 6, 6, 5, 6 and dynamics p. Vib part includes fingerings 3, 6, 6, 6 and dynamics p.

Vn
Va
Vc

Measures 21-24 for Vn, Va, and Vc. Vn part includes fingerings 5, 5, 3, 5 and dynamics p. Va part includes fingerings 6, 6, 5, 5 and dynamics p. Vc part includes fingerings 3, 5, 5 and dynamics p.

Vn
Va
Vc

Measures 25-28 for Vn, Va, and Vc. Vn part includes fingerings 3, 3, 3 and dynamics p. Va part includes fingerings 3, 3, 3 and dynamics p. Vc part includes fingerings 3, 3, 2 and dynamics p.

Vn
Va
Vc

Measures 29-32 for Vn, Va, and Vc. Vn part includes fingerings 3, 3, 3 and dynamics p. Va part includes fingerings 3, 3, 3 and dynamics p. Vc part includes fingerings 3, 3, 2 and dynamics p.

Ten
Vib

Measures 33-36 for Ten and Vib. Ten part includes fingerings 5, 6, 3, 3, 9, 3, 5, 6, 6, 6, 6 and dynamics p. Vib part includes fingerings 5, 6, 5, 7, 6, 5, 6, 6 and dynamics p.

T
V

Measures 37-40 for T and V. T part includes fingerings 6, 6 and dynamics p. V part includes fingerings 6, 7, 3 and dynamics p.

Bcl
Vc
Bcl

Measures 41-44 for Bcl and Vc. Bcl part includes fingerings 5, 6, 3, 5 and dynamics p. Vc part includes fingerings 6, 6, 5, 6 and dynamics p. Bcl part includes fingerings 7, 6, 3, 7, 5 and dynamics p.

5

♩ = 63

Vn
Va
Vc

Handwritten musical score for measures 5-6. It features three staves: Violin (Vn), Viola (Va), and Cello (Vc). The tempo is marked as *♩ = 63*. The key signature has one sharp (F#). The first measure contains complex rhythmic patterns with slurs and accents. The second measure is a whole note chord. Dynamics include *pp* and *fz*.

Vn
Va
Vc

Handwritten musical score for measures 7-8. It features three staves: Violin (Vn), Viola (Va), and Cello (Vc). The first measure contains complex rhythmic patterns with slurs and accents. The second measure is a whole note chord. Dynamics include *fp* and *mp*.

Vn
Va
Vc

Handwritten musical score for measures 9-10. It features three staves: Violin (Vn), Viola (Va), and Cello (Vc). The first measure contains complex rhythmic patterns with slurs and accents. The second measure is a whole note chord. Dynamics include *fmp*.

Vn
Va

Handwritten musical score for measures 11-12. It features two staves: Violin (Vn) and Viola (Va). The first measure contains complex rhythmic patterns with slurs and accents. The second measure is a whole note chord. Dynamics include *fmp*.

♩ = 72

Bcl
Vc

Handwritten musical score for measures 13-14. It features two staves: Bass Clarinet (Bcl) and Cello (Vc). The tempo is marked as *♩ = 72*. The key signature has one sharp (F#). The first measure contains complex rhythmic patterns with slurs and accents. The second measure is a whole note chord. Dynamics include *fmp*. There are handwritten annotations: "6", "6", "3" above the Bcl staff and "5:2", "6" above the Vc staff.

Ch. Dialog



This music is copyright protected

7

Ten

Handwritten musical score for measure 15, Tenor (Ten) part. It features a single staff with complex rhythmic patterns and slurs. Dynamics include *mf*.

Handwritten musical score for measure 15, Bass Clarinet (Cb) part. It features a single staff with complex rhythmic patterns and slurs. Dynamics include *mf*.

Cb

Handwritten musical score for measure 16, Bass Clarinet (Cb) part. It features a single staff with complex rhythmic patterns and slurs. Dynamics include *mf*.

Handwritten musical score for measure 16, Bass Clarinet (Cb) part. It features a single staff with complex rhythmic patterns and slurs. Dynamics include *mf*.

Ten

Handwritten musical score for measure 17, Tenor (Ten) part. It features a single staff with complex rhythmic patterns and slurs. Dynamics include *mf*.

Handwritten musical score for measure 17, Bass Clarinet (Cb) part. It features a single staff with complex rhythmic patterns and slurs. Dynamics include *mf*.

Cb

Handwritten musical score for measure 18, Bass Clarinet (Cb) part. It features a single staff with complex rhythmic patterns and slurs. Dynamics include *mf*.

Handwritten musical score for measure 18, Bass Clarinet (Cb) part. It features a single staff with complex rhythmic patterns and slurs. Dynamics include *mf*.

60

Fl

C1

Bcl

Tcu

Trp

Trb

Unit

P1

P2

Chr.

Vn

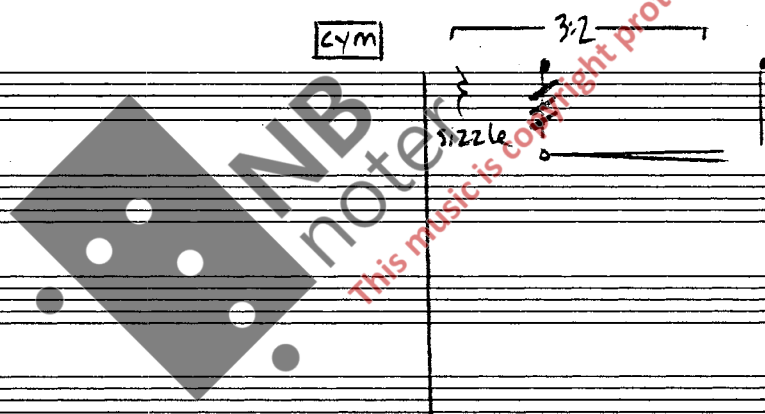
Va

Vc

Cb

3/4 ♩ = 90

4/4



64

Fl

C1

Bcl

Ten

Trp

Trb

Ans

P1

P2

Chr.

Vn

Va

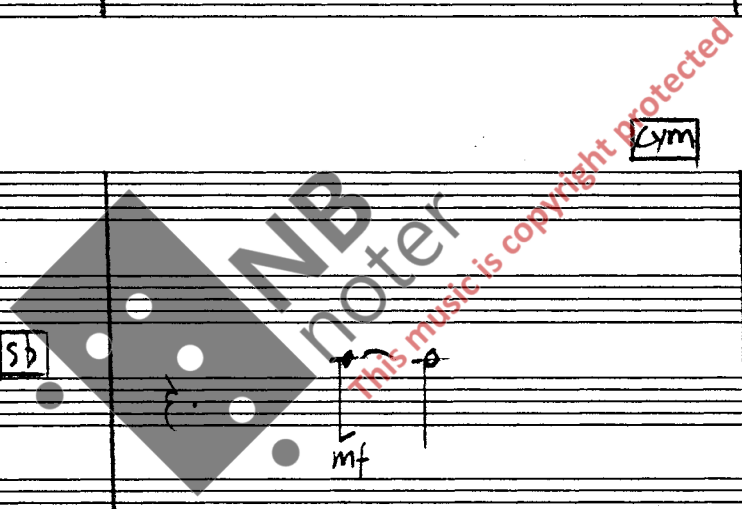
Vc

Cb

4/4 = 58

90

2/4



Flute (Fl) and Clarinet (Cl) parts. Flute starts with a 5-measure rest, then plays a melodic line with dynamics *p*, *mp*, *p*, *mf*, *f*, *mf*. Clarinet follows with similar dynamics and includes a 6-measure rest.

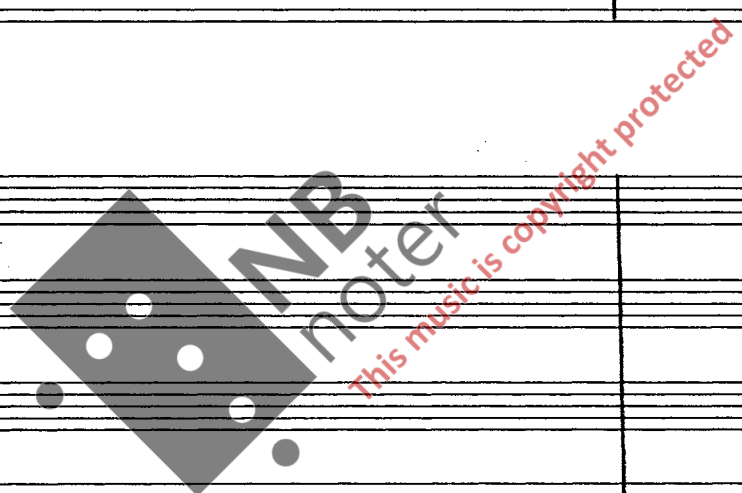
Bassoon (Bcl) and Trombone (Ten) parts. Bassoon has a 5-measure rest, then plays with dynamics *f*, *f*, *f*, *f*. Trombone has a 5-measure rest, then plays with dynamics *f*, *f*, *f*, *f*.

Trumpet (Trp) and Trombone (Trb) parts. Trumpet has a 5-measure rest, then plays with dynamics *fz*, *mf*. Trombone has a 5-measure rest, then plays with dynamics *fz*, *mf*.

Contra Bass (Cmb) and Percussion (P1, P2) parts. Contra Bass has a 5-measure rest, then plays with dynamics *fz*, *mf*. Percussion P1 and P2 have rests and dynamics *p*.

$\frac{2}{4}$ ritardando \rightarrow $\frac{4}{4}$ ♩ = 58

Violin (Vn), Viola (Va), Violoncello (Vc), and Contrabass (Cb) parts. Violin starts with a 6-measure rest, then plays with dynamics *mf*, *mf*, *f*, *mf*. Viola has a 3-measure rest, then plays with dynamics *sub p*, *mf*, *mf*. Violoncello has a 3-measure rest, then plays with dynamics *sub p*, *mf*, *f*, *flaut.*. Contrabass has a 3-measure rest, then plays with dynamics *norm*, *sub p*, *mf*.



Fl
70
3
 $\text{sfz } p$
 mf
3:2
3:2
3:2

Cl
 mf non-leg.
 mf
3:2

Bcl
3
 $\text{sfz } p$
 mf
3:2
3:2

Ten
3
 $\text{sfz } p$
 mf
7
3
3:2
9
3
 mp

Trp
3
 p

Trb
3
6
 $\text{sfz } p$
 fz

Guit
5:2
3
 p
 mp non-leg.

P1
Horns
(brass) p 3

P2
vib
6
 secco
 mp
3
3
7
5
3
5
3
4

$\frac{3}{4} \downarrow = 90$

$\frac{5}{4} \downarrow = 58$

Chr

Vn
6
 $\text{mp spicc. } \text{fp}$
 mf non-leg.

Va
3
 mf

Vc
 mf

Cb
3
 mf

73

F

Cl

Bcl

Ten

Trp

Trb

Unit

P1

P2

3/4 mp

4/4 ♩ = 90

Handwritten musical score for woodwinds and percussion. It includes staves for Flute (F), Clarinet (Cl), Bass Clarinet (Bcl), Tenor Saxophone (Ten), Trumpet (Trp), Trombone (Trb), and Percussion (P1, P2). The score features complex rhythmic patterns with triplets, sextuplets, and nonuplets. Dynamic markings include *mp*, *f*, *p*, and *mf*. A tempo marking of $\text{♩} = 90$ is present. A large watermark 'INB noter' is overlaid on the score.

Chr

Vn

Va

Vc

Cb

26

Handwritten musical score for strings and choir. It includes staves for Choir (Chr), Violin (Vn), Viola (Va), Violoncello (Vc), and Contrabass (Cb). The score features complex rhythmic patterns with triplets and 3:2 ratios. Dynamic markings include *fz*, *mf*, and *fz*. A tempo marking of $\text{♩} = 90$ is present. A note with an asterisk indicates a bowing direction: ** bow towards bridge!*

♩ = 48

① ② ③ ④ ⑤

Fl *tr* →

C.I. *tr* →
pp → p →

Bcl *tr* →

Ten *tr* →
pp #5 → p →

Trp pp b5 → p →

Trb pp b5 → p →

Aut. mp *tr* → l.v.

P1 **tam** ↓

P2 mp *tr* → l.v. **cym** o / o → (ad lib.)

Vn pp → p →

Va pp → p →

Vc pp → p →

Cb pp → p →

trasto
p *trasto*
p *trasto*
p

♩ = ♩ → (♩ = 48)

$\frac{2}{4}$ (senza misura)

Fl *norm*

C.I. *norm*

Bcl p →

Ten p →

Trp p →

Trb p →

Aut. c.s. p →

P1 ||

P2 ||

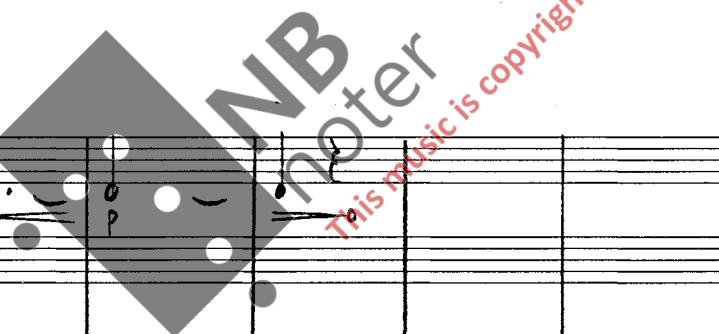
Vn p →

Va p →

Vc p →

Cb p →

p clearly articulated



Fl
Cl.
Bcl
Ten
Trp
Trb
Auit.
P1
P2
Vn
Va
Vc
Cb

Handwritten musical score for the first system. The score includes parts for Flute (Fl), Clarinet (Cl.), Bass Clarinet (Bcl), Tenor Saxophone (Ten), Trumpet (Trp), Trombone (Trb), Alto Saxophone (Auit.), Percussion 1 (P1), Percussion 2 (P2), Violin (Vn), Viola (Va), Violoncello (Vc), and Contrabass (Cb). The percussion parts include Tam-tam (tam) and Cymbal (cym). Dynamic markings include *f*, *pp*, *mf*, and *mp*. Performance instructions include "l.v." (liberamente), "cym ad lib (baw)", and "(scrape w. metal bar on rim.)".

Fl
Cl.
Bcl
Ten
Trp
Trb
Auit.
P1
P2
Vn
Va
Vc
Cb

Handwritten musical score for the second system. The instrumentation remains the same as in the first system. Dynamic markings include *mp*, *p*, *mf*, and *pp*. Performance instructions include "vib" (vibrato), "l.v." (liberamente), and "(ad lib.)".

768

Fl picc mp fmp mf

C1 P mp mf

ClE^b P mp mf

Ten P mf

Trp

Trb

Ant

P1 15 cr 7:4 5:2 mf l.v.

P2 15 cr mf l.v.

$\frac{4}{4}$ $\downarrow = 80$ mp bow $\frac{3}{4}$

Vn fp mf mp f

Va fz p mf mp f

Vc fz p mf mp f

Cb fz p mf

79

Fl

C1

CIE^b

Ten

Trp

Trb

Contr

Handwritten musical notation for woodwinds and brass instruments. Includes dynamics like *fz*, *p*, *f*, *fp*, *p*, *mf*, *pp*, *mp*. Includes articulation like *tr* and *tr*. Includes fingerings like *6* and *3:2*.

P1

P2

Chr.

Handwritten musical notation for percussion and choir. Includes *toms* and *(brushes)*. Includes dynamics like *p* and *pp*. Includes a *l.v.* marking. Includes time signatures $\frac{6}{4}$ and $\frac{3}{4}$.

Vn

Va

Vc

Cb

Handwritten musical notation for strings. Includes dynamics like *mf*, *mp*, *fz*, *pp*. Includes articulation like *tr* and *tr*. Includes fingerings like *5*, *6*, *3*, *3*. Includes *pesante* and *molto pont.* markings. Includes time signatures $\frac{3:2}$ and $\frac{5:2}$.

Fl 82 b mp (se)

C.I. $3:2$

CIEB p (se) mf $6:4$

Ten fzp

Trp

Trb fzp

Cont

Muta in Basso

P1 15 $5:2$ p 15 $5:2$ mp 5 6 mf 15 cr 15 mp $1. \text{v.}$ 3 pp

PZ 15 $3:2$ 5 6 pp

$4/4$ $5/4$ $4/4$

Chr.

Vn p pp fz 3 p p 3 bva

Va fzsub p pp fz 3 p mf $3:2$

Vc p pp fz 3 $?$

Cb p pp fz 3 $?$



85
Fl
mf
p
fz
5

Cl
3
fz

Bcl
3
fz

Ten

Trp

Trb
Cm sordani
pp
5:2

Cmf

15
P1
mp
fz
5
Damp
t.b.
mp
6

15
P2
mp
fz
5
Damp
mf
3:2

Chr.

6
Vn
fz
5
pp
3
mf
3

Va
fzpp
5
fzpp
mf
3
mf
3

Vc
mf
fzpp
5
fzpp
mf
3
mf
3

Cb
mf
fzpp
5
fzpp
mf
3
mf
3

2/4

30

Handwritten musical score for a symphony orchestra, page 31. The score is arranged in a standard orchestral layout with staves for Flute (Fl), Clarinet in B-flat (Cl), Bassoon (Bcl), Trombone (Ten), Trumpet (Trp), Trombone (Trb), Clarinet in F (Awt), Percussion 1 (P1), Percussion 2 (P2), Chromola (Chr.), Violin (Vn), Viola (Va), Violoncello (Vc), and Contrabass (Cb). The score is divided into three measures. The first measure includes dynamic markings such as *p*, *mp*, and *mf*. The second measure includes dynamic markings such as *pp* and *mf*. The third measure includes dynamic markings such as *mp* and *molto part.*. The score features various musical notations, including rests, notes, slurs, and articulation marks. A large watermark "NB noter" is visible across the center of the page, with the text "This music is copyright protected" written in red below it. The page number "31" is circled in the bottom right corner.

Flute (Fl) *mp*

Clarinet 1 (Cl.1) *mp*

Bass Clarinet (Bcl) *mp*

Tenoretti (Ten) *f*

Trumpet (Trp) *mp*

Trumpet 2 (Trb) *p* *mp*

Contra Bassoon (Cmb.) *mp* l.v.

Percussion 1 (P1)

Percussion 2 (P2) *mp* *mf*

Chamberlain (Chr.)

Violin (Vn) *f* c.l.b. jete *fz* *ppp*

Viola (Va) *f* c.l.b. jete *fz* *ppp*

Violoncello (Vc) *f* c.l.b. jete *fz* *ppp*

Contrabass (Cb) *mp* *f* c.l.b. jete *fz* *ppp*

95

Fl

C1

Bcl

Ten

Trp

Trb

Aut

5:2

fz

mf

5:2

5:2

5:2

5:2

5:2

5:2

P1

P2

5

4

(bow)

3

4

cym

cym

b.v.

(bow)

b.v.

(bow)

Chr

Vn

Va

Vc

Cb

ppp

fzpp

ppp

fzpp

ppp

fzpp

ppp

fzpp

5

3:2

5

standstill

standstill

standstill

gradually slower bow

Fl
C.I.
B.C.I.
Ten

Handwritten musical notation for Flute, Clarinet in C, Bass Clarinet in B, and Trombone. It features dynamic markings such as *f* and *mp*, and includes a triplet of eighth notes in the Clarinet part.

Trp
Trb
Cant

Handwritten musical notation for Trumpet, Trombone, and Contrabass. The Trumpet and Trombone parts include a five-measure rest and a melodic line starting with a flat. The Contrabass part starts with a dynamic marking of *mf*.

P1
P2

Handwritten musical notation for Percussion 1 and Percussion 2. P1 includes a **tam** (tam-tam) marking and a dynamic marking of *mf* (bowed). P2 includes a dynamic marking of *mf* (scrape with metal bar) and a dynamic marking of *mf* (bowed) later in the measure.

Chr.

Handwritten musical notation for Chimes, showing a three-measure rest followed by a note.

Vn
Va
Vc
Cb

Handwritten musical notation for Violin, Viola, Violoncello, and Contrabass. All parts feature dynamic markings of *fz* (forzando) and include bowing directions (up and down bows) indicated by arrows.

MB noter
this music is copyright protected

Fl
Cl
Bcl
Ten

Trp
Trb

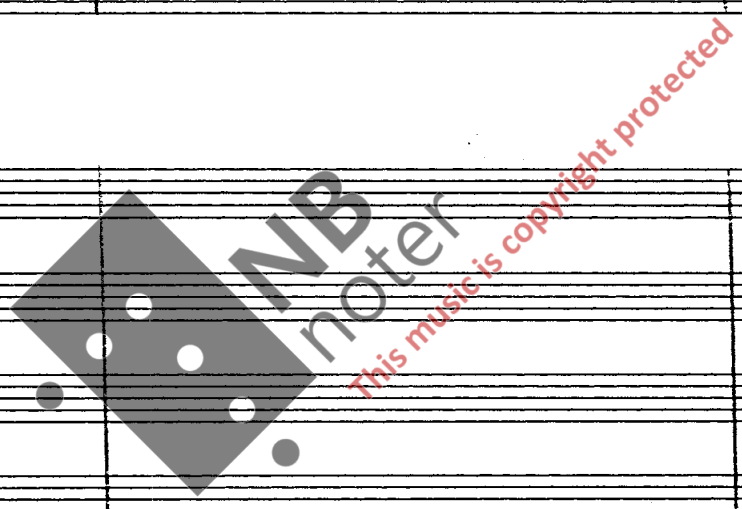
Gmf
P1

P2

4/4

Chr.

Vn
Va
Vc
Cb



♩ = 16

Flp
Ob
Bcl
Ten
Trp
Trb
Guit
P1
P2
Vn
Va
Vc
Cb

fermata ad lib, 5-10"

sim.

Flp
Ob
Bcl
Ten
Trp
Trb
Guit
P1
P2
Vn
Va
Vc
Cb

Muta in Alto

psub
psub
f >
psub
b.v.
bow sim
sim + gliss
sim + gliss
sim + gliss
sim + gliss

Flp
Ob
Bcl
Ten
Trp
Trb
Guit
P1/P2

strings →

J = 72

Fl
Cl
Ten
Bcl

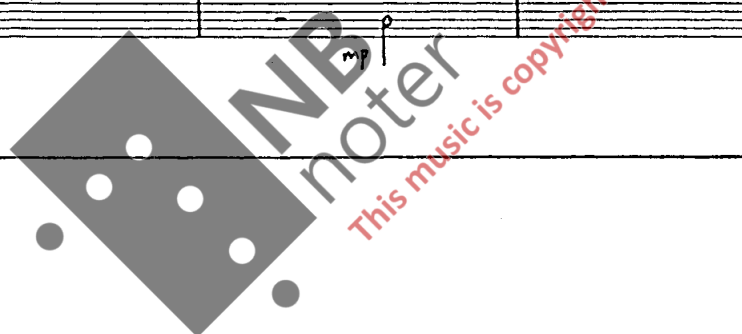
Tutti _____

Fl
Cl
Ten
Bcl

Tutti _____

Fl
Cl
Ten
Bcl
P1
P2

Tutti _____



senza misura

Fl
Cl
Bcl
Ten
Trp
Trb
Cmf
P1
P2
Vn
Va
Vc
Cb

105

Fl

C1

Bcl

Ten

Trp

Trb

Cont

mf, sfz, f, p, sfz p, mp, f2, (m.s.), mp

P1

P2

5/4 mp = 60

(soloist continues)

2/4

Chr.

Vn

Va

Vc

Cb

mf, f, mp sul part., ff, 3:2, 5:3, 5

mp pp

107

Fl
C.I.
Bcl
Ten
Trp
Trb
Awt

(M.S.)

This music is copyright protected

P1 15
P2 15

mp

$\frac{2}{4}$ $\frac{3}{4}$ $\frac{2}{4}$ $\frac{4}{4}$

Chr

Vn
Va
Vc
Cb

mf

f c.l.b. jete

f c.l.b. jete

f c.l.b. jete

f

(*)

III

Fl

C.1

Bcl

Ten

Trp

Trb

Contr.

P1

P2

Chr.

Vn

Va

Vc

Cb

f (keys)

fz

mf

Wb

Wb

ff c.l.b. jetc.

4/4

6/4

38

Ten, Guit, Perc II and Cb improvise on a few pitches within mid to low register. The rhythms should be semi-stable with fluctuating pulsations, sharply accentuated. The effect sought for is aggressive, yet restrained.

The improvisations are temporarily broken off by cues to the rest of the ensemble, and starts again immediately after the interruptions end. The 9 cues are as follows:

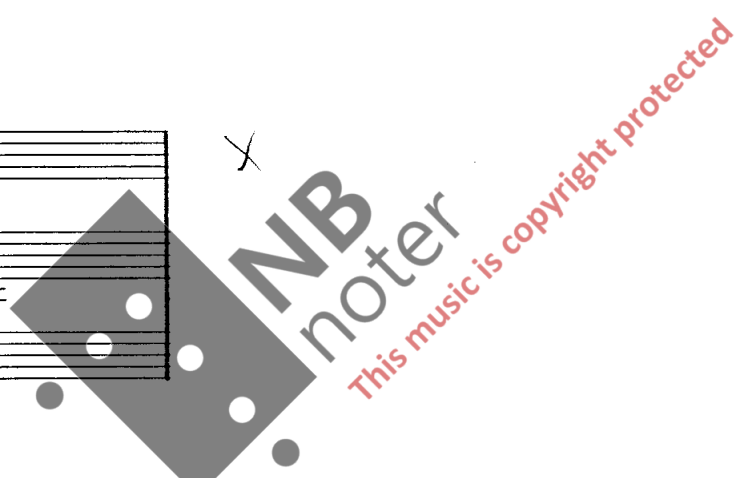
(In C)

①

②

③

④



⑤

Handwritten musical score for measures 5-6. The score is for Violin (Vn), Viola (Va), and Violoncello (Vc). The tempo is marked as $\text{♩} = 120$. The time signature is 3/4. The key signature has one sharp (F#). The music features a triplet of eighth notes in the first measure of each staff, followed by a triplet of quarter notes in the second measure. A dynamic marking of f is present at the beginning. A handwritten 'y' is visible to the right of the staves.

⑥

Handwritten musical score for measures 7-8. The score is for Flute (Fl), Trumpet (Trp), Violin (Vn), Clarinet in B-flat (C.B.), Tenor (Ten), Viola (Va), Bassoon (Bc), Trombone (Trb), and Violoncello (Vc). The tempo is marked as $\text{♩} = 132$. The time signature is 3/4. The key signature has one sharp (F#). The music features a triplet of eighth notes in the first measure of each staff, followed by a triplet of quarter notes in the second measure, and a 3:2 ratio in the third measure. A handwritten 'x' is visible to the right of the staves.

⑦

Handwritten musical score for measures 9-10. The score is for Flute (Fl) and Clarinet in B-flat (C.B.). The tempo is marked as $\text{♩} = 120$. The time signature is 3/4. The key signature has one sharp (F#). The music features a triplet of eighth notes in the first measure of each staff, followed by a triplet of quarter notes in the second measure, and a triplet of eighth notes in the third measure. A watermark for 'MNB noter' and 'This music is copyright protected' is overlaid on the score.

⑧

Handwritten musical score for measures 11-12. The score is for Trumpet (Trp), Tenor (Ten), and Trombone (Trb). The tempo is marked as $\text{♩} = 144$. The time signature is 3/4. The key signature has one sharp (F#). The music features a triplet of eighth notes in the first measure of each staff, followed by a triplet of quarter notes in the second measure, and a 3:2 ratio in the third measure. A dynamic marking of f is present at the beginning.

⑨

Handwritten musical score for measures 13-14. The score is for Flute (Fl), Trumpet (Trp), Viola (Va), Clarinet in B-flat (C.B.), Tenor (Ten), Bassoon (Bc), Trombone (Trb), and Violoncello (Vc). The tempo is marked as $\text{♩} = 144$. The time signature is 3/4. The key signature has one sharp (F#). The music features a 3:2 ratio in the first measure of each staff, followed by a triplet of quarter notes in the second measure, and a triplet of eighth notes in the third measure.

113

Fl piccolo

Ob

ClEb

Ten

Trp

Trb

Contra

P1

P2

Chr

5/4 ♩ = 90

Vn

Va

Vc

Cb

Flute (Fl) staff: *pp*, *fz*, *fz*, *fz*

Oboe (Ob) staff: *fz*, *fz*, *fz*

Clarinet in E-flat (ClEb) staff: *fz*, *fz*, *fz*

Tenor (Ten) staff: *fz*, *fz*, *fz*

Trumpet (Trp) staff: *con sordin*, *fz*, *fz*

Trumpet in B-flat (Trb) staff: *con sordin*, *fz*, *fz*

String (Smit) staff: *f*, *f*, *f*

Piano 1 (P1) staff: *p*, *L.v.*

Piano 2 (P2) staff: *p*, *L.v.*

3/4 ————— 2/4 —————> 4/4

Chorus (Chr.) staff: (Empty)

Violin (Vn) staff: *Dynamik sehr*, *sva*, *fz*, *ppp*, *fz mp*

Viola (Va) staff: *fz*, *ppp*, *fz*

Violoncello (Vc) staff: *fz*, *ppp*, *fz*

Double Bass (Cb) staff: *fz*, *ppp*, *fz*

120

Fl
Ob
ClEb

mp ————— f

Ten
Trp
Trb

p

Git.
P1
P2

f harmonics ad lib 4th, 7th and 10th fret.

4 3/4 4

Chr.

Vn

Va

Vc

Cb

123

Fl

sub mp fz f

Ob

E♭

Ten

pp

Trp

pp

Trb

pp

Snrt

15

P1

l.v.

3:2

(f)

l.v.

P2

15

3

l.v.

4

3

4

6

Chr

Vn

mf jete

3:2

3

p

mp

poco espressivo

3:2

Va

mf jete

p

mp

p

mp

fp

Vc

mf jete

p

mfp

mfp

fp

5:2

Cb

mf jete

p

mp

p

mp

fp

5:2

(42)

126

Fl
 f $\overbrace{\quad}^3$ $\overbrace{\quad}^3$ mp $\overbrace{\quad}^6$ mf

Ob
 f $\overbrace{\quad}^{3:2}$ mp $\overbrace{\quad}^6$ mf

IEb
 f $\overbrace{\quad}^3$ mp $\overbrace{\quad}^6$ mf

Ten
 mp $\overbrace{\quad}^3$ mf $\overbrace{\quad}^6$

Trp
 mp $\overbrace{\quad}^3$ mf $\overbrace{\quad}^6$

Trb

Int

P1
 15 l.v.

P2
 15 l.v.

6
4

5
4

Chr

Vn
 f $\overbrace{\quad}^3$ mf $\overbrace{\quad}^{\text{trem. rit.}^*}$

Va
 f $\overbrace{\quad}^{\text{trem. rit.}^*}$ mf $\overbrace{\quad}^{\text{trem. rit.}^*}$

Vc
 f $\overbrace{\quad}^{3:2}$ mf $\overbrace{\quad}^{\text{trem. rit.}^*}$

Cb
 f $\overbrace{\quad}^{3:2}$ mf $\overbrace{\quad}^{\text{trem. rit.}^*}$

sul pont. $\overbrace{\quad}^{\text{trem. rit.}^*}$

* gradually slower tremola

128

Fl
Ob
ClE'
Ten
Trp

fz $\frac{0}{\infty}$ f

5 6 6

5 6 6

5 6 6

5 6 6

5 6 6

Trb

fz $\frac{0}{\infty}$

5 6 5 6

P1 mp

P2 **CYM** $\frac{0}{\infty}$ l.v.

mf (sizzle)

6/4 4/4

Chr.

Vn

Va

Vc

Cb

$\frac{0}{\infty}$

$\frac{0}{\infty}$

$\frac{0}{\infty}$

$\frac{0}{\infty}$



130

Fl
Ob
E♭
En
Trp
Trb
Imp

P1
P2

4/4 3/4 4/4 3/4

Chr.

Vn
Va
Vc
Cb

Fl
f

Ob
f

Cl^b
f

Ten
pp

Trp
pp

Trb
pp

Int

P1
mp

15 — b.v.

P2
mp

15 — b.v.

3/4 4/4 2/4

Chr.

Vn
p

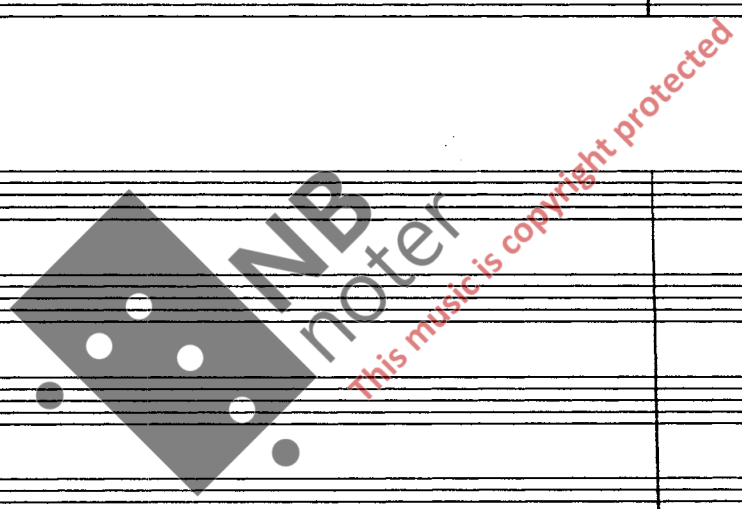
5:2

Va
p

3:2

Vc
p

Cb
p



136

Fl
Ob
ClEb
Ten

f

6 5 6 6 6 6 5

Trp
Trb
Snt

mp

5:2

mp

mp

P1
P2

15

p.

mf

L.v.

L.v.

2/4 3/4

Chr.

Vn
Va
Vc
Cb

fmp

f

8va

ppp

f

ppp

f

ppp

f

ppp

Fl *muta in Alto*

Ob *fp mp*

Cl *fp mp*

Ten *fp mp*

Trp *fp mp*

Trb *fp mp*

Int. *l.v.*

3 6 6 3

fsub

4:3

mf

P1 *l.v.*

P2 *f*

15

15

l.v.

2/4

Chr

Vn *tz*

Va *tz*

Vc *tz*

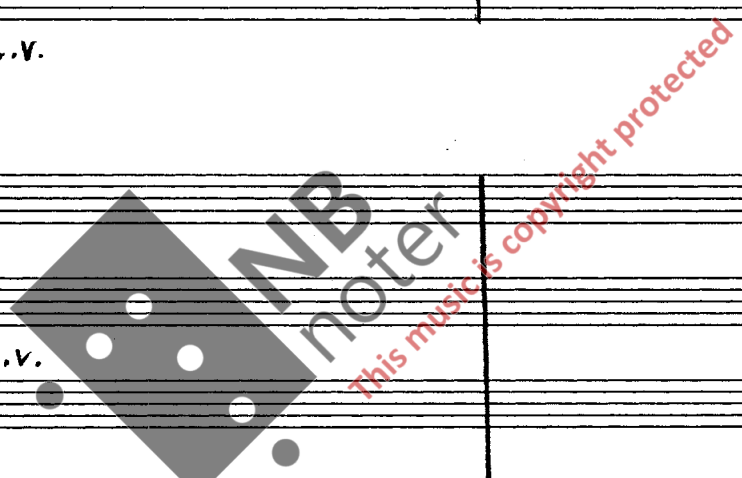
Cb *tz*

(b)

(b)

(b)

(b)



Musical score for woodwinds and percussion (measures 144-154):

- Flute (Fl):** Starts with a **f** dynamic and a 5-measure phrase. Includes fingerings 3, 5, 5.
- Oboe (Ob):** Starts with a **f** dynamic and a 5-measure phrase. Includes fingerings 3, 5, 5.
- Clarinet in E-flat (ClE^b):** Starts with a **f** dynamic and a 5-measure phrase. Includes fingerings 3, 5, 5.
- Trumpet (Trp):** Starts with a **f** dynamic and a 5-measure phrase. Includes fingerings 3, 5, 5.
- Trombone (Trb):** Starts with a **f** dynamic and a 5-measure phrase. Includes fingerings 3, 5, 5.
- Saxophone (Sax):** Starts with a **f** dynamic and a 5-measure phrase. Includes fingerings 3, 5, 5.

Musical score for piano (measures 15-16):

- P1:** Right hand, **mf** dynamic, 5-measure phrase with fingerings 5, 3, 5, 5.
- P2:** Left hand, **mf** dynamic, 5-measure phrase with fingerings 5, 3, 5, 5.

Time signatures and dynamics for the piano part:

- Measure 15: $\frac{2}{4}$
- Measure 16: $\frac{5}{4}$ **mf**
- Measure 17: $\frac{4}{4}$

Chorus part (Chr.):

Empty staves for vocal or choral part.

Musical score for strings (measures 17-20):

- Vn (Violin):** **f** dynamic, $\frac{5}{2}$ rhythm, 5-measure phrase. Includes fingerings 5, 5.
- Va (Viola):** **f** dynamic, $\frac{5}{2}$ rhythm, 5-measure phrase. Includes fingerings 5, 5.
- Vc (Violoncello):** **f** dynamic, $\frac{5}{2}$ rhythm, 5-measure phrase. Includes fingerings 5, 5.
- Cb (Double Bass):** **f** dynamic, $\frac{5}{2}$ rhythm, 5-measure phrase. Includes fingerings 5, 5.

147

Fl

Ob

ClEb

Ten

Trp

Trb

Corn

P1

P2

l.v.

4
4

Chr

Vn

Vn

Vc

Cb

grn loco

accelerando poco a poco

♩ = 104

senza misura
↓ = 90
unis 8va

Fl
Vn
C.I.
Trp
Va
unis 8va basso
TSTrb
AutVc
Bcl
Cb
unis 15va basso

Christian tries to follow in unisone ...

ritardando poco a poco

♩ = 90

Christian ad lib

≈ 10"

rit. poco a poco

♩ = 80

②
unis 8va

Fl
Vn
C.I.
Trp
Va
unis 8va basso
TSTrb
AutVc
Bcl
Cb
unis 15va basso

Christian sim.

acc. poco a poco

l=an

Christian ad lib

≈ 15"

Autotr tries to follow in unisone

acc. poco a poco

♩ = 120

③

Fl
Vn
C.I.
Trp
Va
TSTrb
Vc
Bcl
Cb
Autr

Christian sim.

rit. poco a poco

♩ = 90

Christian ad lib.

≈ 20"

Saxophone tries to follow in unisone

Autotr sim

rit. poco a poco → ♩ = 72

Fl
Vn
C.I.
Trp
Va
Trib
Vc
Bcl
Cb
TS
Guit

unis Bva

unis Bva basso

unis 15va basso

saxophone tries to follow in unisone

Guitar sim.

Christian sim. acc. poco a poco → ♩ = 90

Christian ad lib. ≈ 25"

Perc 2 tries to follow in unisone

Bass tries to follow in unisone

Saxophone sim.

Guitar sim.

5

Fl
Vn
C.I.
Trp
Va
Trib
Vc
Bcl
Cb
TS
Guit
Perc 2
Cb

unis Bva

unis Bva basso

unis 15va basso

saxophone sim.

Guitar sim.

Perc 2 tries to follow in unisone

Bass tries to follow in unisone

acc. poco a poco → ♩ = 120

Christian sim. rit. poco a poco → ♩ = 72

Christian ad lib. ≈ 20"

Perc 2 sim.

Bass sim.

Saxophone sim.

Guitar sim.

Important: Section G must not be rehearsed individually by the musicians!
 The ensemble-rehearsals must be kept to a minimum, to guarantee flaws, imperfections and unsynchronicity in the performance.

150

F1

F2

3Cl

cu

Trp

Trb

Unit

P1

P2

5
4 | = 44

Chr.

Vn

Va

Vc

Cb

152

Fl

Ob

Bcl

Ten

Trp

Trb

Aut

P1

P2

Chr.

Vn

Va

Vc

Cb

~~Christian~~, Ten, Guit, Perc 2, Cb ad lib (2-4')



This music is copyright protected

153

Fl piccolo

C.1

BCl

Ten

Trp in C

Trb

Cont.

P1

P2

Chr.

3/4 $\text{♩} = 58$ 2/4 3/4 GC 3/4

Vn

Va

Vc

Cb

FL

CL

BCl

Ten

Trp

Trb

Euph

P1

P2

Chr

The score for the brass and woodwind section includes parts for Flute (FL), Clarinet (CL), Bass Clarinet (BCl), Tenor Saxophone (Ten), Trumpet (Trp), Trombone (Trb), Euphonium (Euph), Percussion 1 (P1), Percussion 2 (P2), and Chroma (Chr). The music spans three measures. The first measure features a woodwind entry with a triplet in the Bass Clarinet marked 'fzpp' and a triplet in the Trumpet. The second measure has a dynamic change to 'f' in the Clarinet and 'mp' in the Trombone and Euphonium. The third measure shows a variety of articulations and dynamics, including 'fz' and 'mf'. Performance markings include 'cym' (cymbal), 'Log' (log drum), and 'l.v.' (live). A large watermark 'NB notet' is present across the middle of the page.

Vn

Va

Vc

Cb

54

The string section score includes parts for Violin (Vn), Viola (Va), Violoncello (Vc), and Contrabasso (Cb). The music spans three measures. The first measure features a sixteenth-note triplet in the Violin and Viola marked 'fz', and a sixteenth-note triplet in the Cello marked 'mf'. The second measure has a dynamic change to 'mf' in the Violin and Viola. The third measure shows a variety of articulations and dynamics, including 'fz' and 'mf'. A large watermark 'NB notet' is present across the middle of the page.

Fl Alto

C.I.

B.C.I.

Ten

Trp c.s.

Trb c.s.

Umf

P1

P2

5/4 ♩ = 72

Accel. →

3/4

Vn

Va

Vc

Cb

161

Fl
f
mf
f (key-clicks)

Cl
fp
mf
f (key-clicks)

Bcl
f
mf
f (key-clicks)

Ten
P sempre legato
mf
f (key-clicks)

Trp
c.s. mf
p
mf
fz

Trb
c.s. mf
p
mf
fz

Unit
mp
mf

P1
mp

P2
Log
mf
mf
fz

Chr.

3/4 ♩ = 90

Vn
c.s. fz
mp
f c.l.b.

Va
c.s. fz
mp
f c.l.b.

Vc
c.s. mp
mp
f c.l.b.

Cb
c.s. mp
mp
f c.l.b.

164

Fl

C.I.

Bcl

Ten

Trp

Trb

Amf.

Muta in Eb

mp

fmp

8va

fz

3

>>>>

P1

P2

7:4

mp

fz

P

fz

mf

P

fz

Cym.

l.v.

♩ = 80

Cw.

Vn

Va

Vc

Cb

tr

mp

fz

P

fz

3

>>>>

5

3

tr

molto s.p.

fz

P

fmp

fz

3

tr

molto s.p.

fz

P

Fl
 f mf (keys) mf

Cl
 sfz f mf p sfz p

3Cl
 sfz mf sfz p

Ten
 f mf sfz p

Trp
 mf f mp mf

Trb
 mf mp

Conit
 mp (m.s.)

P1
 15 cr mp l.v. Log p fz t.b.

P2
 15 cr mp l.v. Log mp f 4:3 mp fz

(soloist continues)

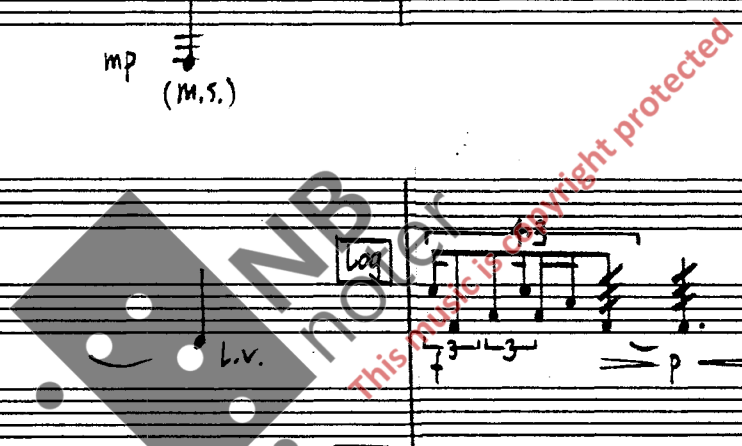
Chr.

Vn
 f mp sul part.

Va
 f mf

Vc
 mf

Cb
 mf



FI *Auto*

Ob

ClEb

Ten

Trp

Trb

Cmit

P1

P2

Chr.

$\frac{4}{4} = 90$

$\downarrow = 104$

CR

Wb

Log

Log

This music is copyright protected

Vn

Va

Vc

Cb

mf

mf

mf

mf

mf

$\frac{5}{2}$

$\frac{5}{2}$

$\frac{5}{2}$

$\frac{5}{2}$

$\frac{5}{2}$

sul pont.

sul pont.

sul pont.

sul pont.

f

f

f

f

p

p

p

p

Fl
Ob
BCl
Ten
Trp
Trb
Auit

P1
P2

5/4 | = 44 4/4 2/4

Chr.

Vn
Va
Vc
Cb

Fl
f (key-clicks)

Cl
f (key-clicks)

Bcl
3:2
+ fz (key-clicks)
3:2

Ten
+ fz (key-clicks)
5:2

Trp
b
mp
5:2

Trb
c.s. pp — mp

Git
fz fz

P1
brushes [toms] [sn] mf 3 3 mp 5:3 mf 3 6

P2
soft mallets [t.b] [kick] [cym] 7 5 3 5:3

2/4 ♩ = 104 4/4 mf f mp 5/4 4

Chr.

Vn
fz

Va
fz

Vc
fz

Cb
fz

Fl
f (key-clicks)

Cl
f (key-clicks)

Bcl
fz

Ten
fz

Trp
p mf

Trb
p mf

Amf
fz

P1
mf mp sub f mp 3:2 f

P2
h.v. f mf 5:3 3

4 5

Chr.

Vn
fz

Va
fz

Vc
fz

Cb
fz

(62)



Flute (Fl) and Clarinet in C (C.I.) parts are mostly blank, with a final measure containing a tremolo symbol and the instruction *f* (key-c.).

Bassoon (Bcl) and Tenor Saxophone (Ten) parts are blank.

Trumpet (Trp) and Trombone (Trb) parts are blank, with a final measure containing a tremolo symbol, a dynamic marking *ff*, and a triplet of eighth notes.

Contra Bassoon (Cmb) part is blank, with a final measure containing a tremolo symbol.

Piano 1 (P1) and Piano 2 (P2) parts contain complex rhythmic patterns including triplets, sextuplets, and 3:2 ratios. Dynamic markings include *sub p*, *mf*, *p*, *mp*, and *pp*. The P2 part concludes with *l.v.* (live) and a measure containing a 4/4 and 5/4 time signature.

Chorus (Chr.) part is blank.

Violin (Vn) and Viola (Va) parts are blank, with a final measure containing a tremolo symbol and a dynamic marking *c*.

Violoncello (Vc) and Double Bass (Cb) parts are blank, with a final measure containing a tremolo symbol and a dynamic marking *c*.

Fl
C.I.
Bcl
Ten
Trp
Trb
Cmt

P1
P2

5/4
2/4 = 96
4/4

Chr

Vn
Va
Vc
Cb

5:2
f
fmp
mp
fmp
5:2
fmp
5:2
f
fmp

Fl
Cl
Bcl
Ten
Trp
Trb
Cunt

P1
P2

$\frac{4}{4}$ ♩ = 104

$\frac{3}{4}$ ♩ = 88

Chr.

Vn
Va
Vc
Cb

Fl
C.l.
Bcl
Ten
Trp
Trb
Cant

P1
P2

Chr.

Vn
Va
Vc
Cb

Fl
Cl
Bcl
Ten
Trp
Trb
Awt

Muta in Eb

P1
P2

3/4 ♩ = 104
5/4 ♩ = 84

Chr.

Vn
Va
Vc
Cb

senza vib.

fmp

Fl
Cl.
ClEb
Ten
Trp
Trb
Cunt

Handwritten musical score for woodwinds and brass instruments. The instruments listed are Flute (Fl), Clarinet (Cl.), Clarinet in E-flat (ClEb), Tenor Saxophone (Ten), Trumpet (Trp), Trombone (Trb), and Contrabass (Cunt). The score includes various musical notations such as dynamics (f, mp, mf, p), articulation (accents, slurs), and fingerings (5, 3, 2).

P1
P2

l.v.

$\text{♩} = 104$ $\frac{6}{4} \text{♩} = 84$ $\frac{4}{4}$

Percussion and conductor parts. P1 and P2 are marked with a 'l.v.' (live) symbol. Below the staves, there are tempo markings: $\text{♩} = 104$, $\frac{6}{4} \text{♩} = 84$, and $\frac{4}{4}$. The conductor part (Chr.) is empty.

Vn
Va
Vc
Cb

Handwritten musical score for string instruments: Violin (Vn), Viola (Va), Violoncello (Vc), and Contrabass (Cb). The score includes dynamics (f, mp, mf), articulation (accents, slurs), and fingerings (6, 3, 2). Performance instructions like 'gva' and 'loco' are present.

Fl
Cl.
Bcl
Ten
Trp
Trb
Amit.

Muta in basso

Handwritten musical notation for woodwinds and strings, including dynamics (f, mf, mp) and articulation (accents, slurs).

P1
P2

Handwritten musical notation for piano parts, including dynamics (mf, f, mp) and articulation (accents, slurs).

4/4 = 104 3/4 = 84 3/4

Chr.

Empty musical staff for Chorus.

Vn
Va
Vc
Cb

Handwritten musical notation for strings, including dynamics (f, mp) and articulation (accents, slurs). Includes the instruction "senza vib." for Violin, Viola, and Violoncello.

Fl
Cl.
Bcl
Ten
Trp
Trb
Cant

Handwritten musical score for woodwinds and brass instruments. The instruments listed are Flute (Fl), Clarinet (Cl.), Bass Clarinet (Bcl), Tenor Saxophone (Ten), Trumpet (Trp), Trombone (Trb), and Alto Saxophone (Cant). The score includes various musical notations such as slurs, ties, and dynamic markings like *mp*, *f*, and *mf*. There are also some performance instructions like *tr* (trill) and *6* (sixteenth notes).

P1
P2

Handwritten musical score for piano parts P1 and P2. P1 features a 4:3 ratio and a 6:4 ratio. P2 includes a 3:1 ratio. Dynamic markings include *f* and *Mf*.

Chr.

Handwritten musical score for the Chorus (Chr.) instrument, which is currently blank.

Vn
Va
Vc
Cb

Handwritten musical score for string instruments: Violin (Vn), Viola (Va), Violoncello (Vc), and Contrabass (Cb). The score includes various musical notations such as slurs, ties, and dynamic markings like *f*, *mp*, and *p*. There are also some performance instructions like *tr* (trill) and *6* (sixteenth notes).



[Percussion 2 improvises with soloist. Insert cues during the improvisation.]

① 5/4 ♩ = 90

Fl p piccolo
Ob
Cl Eb
Ten
Trp
Trb
Cmt.
P1
P2
Vn
Va
Vc
Cb

② 5/4 ♩ = 60

Fl p
Ob
Cl Eb
Ten
Trp
Trb
Cmt.
P1
P2
Vn
Va
Vc
Cb

Muta in Alto
Muta in Cor Ang.
Muta in Basso

A.L.

③ 4/4 ♩ = 72

Handwritten musical score for rehearsal mark 3. The score is in 4/4 time with a tempo of 72 beats per minute. It includes parts for Flute (Fl), Clarinet (Cl), Bass Clarinet (Bcl), Trombone (Ten), Trumpet (Trp), Trombone (Trb), Guitar (Guit), Piano 1 (P1), Piano 2 (P2), Violin (Vn), Viola (Va), Violoncello (Vc), and Contrabass (Cb). The score features dynamic markings such as *p*, *mp*, and *ppp*, and includes performance instructions like *muta m^e* and *tr*. The music consists of sustained notes with crescendos and decrescendos across the measures.

④ 3/4 ♩ = 104

Handwritten musical score for rehearsal mark 4. The score is in 3/4 time with a tempo of 104 beats per minute. It includes parts for Flute (Fl), Clarinet (Cl), Clarinet in E-flat (Cl^{E♭}), Trombone (Ten), Trumpet (Trp), Trombone (Trb), Guitar (Guit), Piano 1 (P1), Violin (Vn), Viola (Va), Violoncello (Vc), and Contrabass (Cb). The score features dynamic markings such as *mf* and *f*, and includes performance instructions like *basso* and *tr*. The music includes melodic lines with slurs and accents.

⑤ 4/4 ♩ = 88

Handwritten musical score for rehearsal mark 5. The score is in 4/4 time with a tempo of 88 beats per minute. It includes parts for Flute (Fl), Clarinet (Cl), Bass Clarinet (Bcl), Trombone (Ten), Trumpet (Trp), Trombone (Trb), Guitar (Guit), Piano 1 (P1), Violin (Vn), Viola (Va), Violoncello (Vc), and Contrabass (Cb). The score features dynamic markings such as *mf* and *mp*, and includes performance instructions like *(key-clicks)*, *(sizzle)*, *l.v.*, *locol*, *locb*, and *(tr)*. The music includes sustained notes and textures.

Flute (Fl) staff: fzP dynamic marking.

Oboe (Ob) staff: fzP dynamic marking.

Bassoon (Bcl) staff: fzP dynamic marking.

Tenor (Ten) staff: P , mp , mf , f dynamic markings.

Trumpet (Trp) staff: empty.

Trumpet (Trb) staff: empty.

Contra Bass (Cmb) staff: pp dynamic marking.

P1 and P2 staves: marked with 'x'.

$\frac{4}{4}$ ♩ = 120

Chorus (Chr.) staff: empty.

Violin (Vn) staff: fzP dynamic marking.

Viola (Va) staff: fzP dynamic marking.

Violoncello (Vc) staff: fzP , mf dynamic markings.

Double Bass (Cb) staff: fzP dynamic marking.



Fl *mp*

Ob *mf*

Bcl *mp*

Ten *f*

Trp *fp*

Trb *fp*

Contra *fz*

Handwritten musical notation for woodwinds and strings, including dynamic markings and fingering (5).

P1

P2

Handwritten musical notation for percussion parts, including a box labeled 'log' and a cross symbol.

Chr.

Handwritten musical notation for a choir part, currently blank.

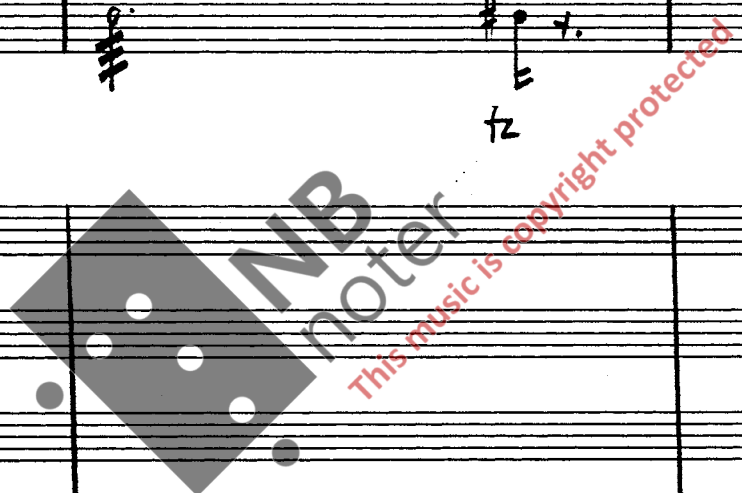
Vn *p*

Va *p*

Vc *mf*

Cb *mp*

Handwritten musical notation for strings, including dynamic markings and fingering (5).



oslo 10.09.00 End Bure