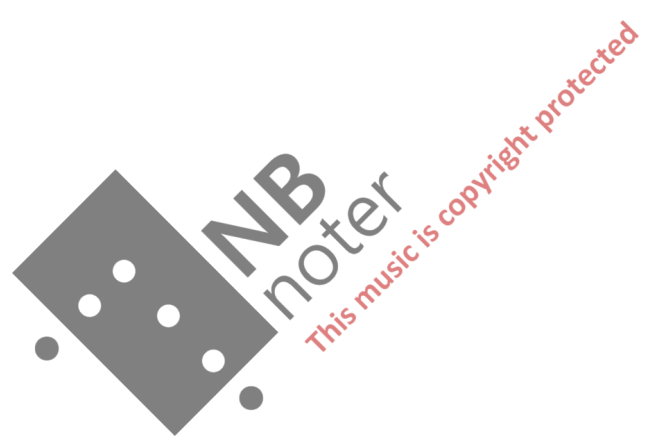


EIVIND BUENE

Inductions

Gitar solo







INDUCTIONS

for Solo Guitar

EIVIND BUENE

1995



- ACCIDENTALS HOLDS GOOD FOR THE FOLLOWING NOTE ONLY
- ALTHOUGH "INDUCTIONS" IS WRITTEN SENZA MISURA, THE RYTHMIC PULSE SHOULD ALWAYS BE FIRMLY REGARDED, EXCEPT WHERE INDICATED.
-  = REPEAT THE FIRST NOTE OR CHORD
-  = ARPEGGIO WITH ONE RIGHT HAND FINGER



INDUCTIONS for Solo Gitar

Til Andreas Brekne

EIVIND BUENE

⑥ = E^b ♩ ca. 63

DURATA : 10'30"

DOLCE

f

mp

mf

mp

p

crescendo poco a poco

Sub p cresc-

sempre \updownarrow

crescendo mf cresc. f

mf

crescendo poco a poco

sempre cresc.

ff

sub mf

crescendo ff submf cresc.

poco decresc.

mf

crescendo ff

sub p

cresc. f

musical staff with notes, dynamic marking *sempre f*, and first endings marked *l.v.* with *m* and *p* dynamics.

musical staff with notes, dynamic marking *ff*, and first endings marked *l.v.* with *accele-* and *rando* markings.

musical staff with notes, dynamic marking *pp*, and first endings marked *l.v.* with *poco a poco* and *sempre acc-* markings.

musical staff with notes, dynamic marking *fff*, first ending marked *l.v.* with *A2* and *ca 72*, and tempo marking *MEDITATIVO E LIBERAMENTE*.

musical staff with notes, dynamic marking *pp (low voice)*, and first ending marked *l.v.* with *1'50*.

musical staff with notes, dynamic marking *p*, and first ending marked *l.v.* with *2'50*.

musical staff with notes, dynamic marking *mf*, and first ending marked *l.v.* with *3* and *5* fingerings.

musical staff with notes, dynamic marking *mf*, and first ending marked *l.v.* with *3* and *5* fingerings.

musical staff with notes, dynamic marking *mf*, and first ending marked *l.v.* with *3* and *5* fingerings.

musical staff with notes, dynamic marking *mf*, and first ending marked *l.v.* with *3* and *5* fingerings.

crescendo poco a poco

2'50"

A3

pantic. f norm. mf f pantic. poco rit norm.

f

poco rit. crescendo . . .

ff poco rit. mf

l.v. ff

crescendo fff sim

ca3

DECRESC. mf

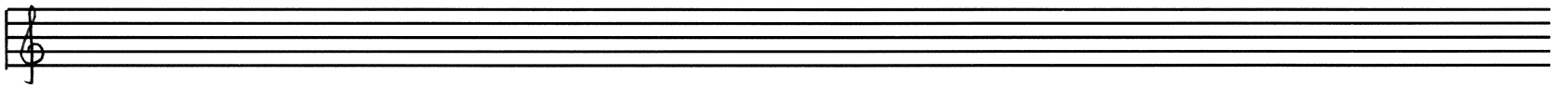
A4 ROBUSTO

340 p f

f

mf f cresc. . .

crescendo poco a poco l.v. fff Decresc



ca 63

B1

DOLCE

p

mp

mf

pp

crescendo

mp

p

crescendo poco a poco

sempre cresc.

f

sub mp

crescendo

f

sub mp

crescendo

f

sempre f

sub pp

ff

630

5

RA.

This music is copyright protected

B2 * *pp* *molto distinto*

pp *p* *mp* *crescendo* *mf* *sempre cresce a niente*

B3 *f* *7'20"* *sempre f* *10* *gliss* *L.v.* *b^b L.v.* *7'30"*

B4 *ff* *accellerando* *ff vib.* *mp* *(irregolare ma rapido)* *mf* *p* *mp* *L.v.* *8'10"*

Handwritten musical score for a single melodic line, likely for a violin or flute. The score is divided into three sections: C1, C2, and C3.

Section C1: Starts with a tempo marking of \downarrow ca 120. The first measure is marked with a box containing "C1". The music begins with a b^{\flat} key signature and a dynamic of f . It features a series of eighth and sixteenth notes, followed by a $crescendo$ leading to a fortissimo (fff) section. A tempo change to \downarrow ca 60 is indicated, along with the instruction "giusto, l.v. poss.". Dynamics range from pp to p . The section concludes with a $crescendo$ and a dynamic of mf .

Section C2: Begins with a tempo marking of \downarrow = 60. It contains several triplet markings (3) and a 4-measure phrase. A tempo change to \downarrow = 46 is noted. The section includes a $poco cresc.$ marking and ends with a dynamic of mp .

Section C3: Starts with a tempo marking of \downarrow = 60. It features a 9'20" section marked mf with a $l.v. 5$ instruction. This is followed by a 5-measure phrase and a 72-measure section marked mp . The music includes various rhythmic patterns, including triplets and quintuplets. A dynamic of f is used in the first measure of this section. The section concludes with a p dynamic and the instruction "sempre".

The score includes various musical notations such as accidentals, slurs, and dynamic markings. A large watermark "NB noter" is visible across the middle of the page.

approximate total duration: 10'30"

05/0 11.9.95
Eind Queen

ELEMENTENE :

①

②

③ s.7 fst.4 s.7 L.2 4 s.3 fst.4 5 L.2

④

⑤

⑥

