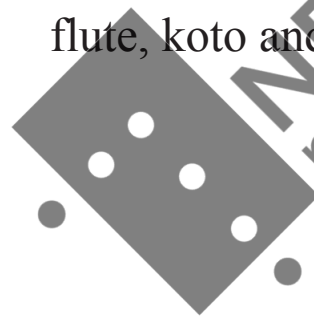


Karsten Brustad:

"Ame"

for
flute, koto and harp



This music is copyright protected

Durata: ca. 6 min.

"Ame" is composed to the project "Japan 2019" initiated by "Artemis – Music appreciation & dissemination. Cultural communication through music" lead by Arild Bøe.
First performance Kyoto 14.04.2019. Maiken Mathisen Skau, flute, Chieko Iwazaki, koto and Sarah Pagé, harp.

*Ame is the Japanese word for rain. In 1947, the Norwegian author Tarjei Vesaas published the poem "Regn i Hiroshima/Rain in Hiroshima".
Rain can be life-giving, but can also be lethal.*



This music is copyright protected

Notation

Koto - tuning:



A single staff of music in treble clef showing the tuning of the 13 strings of a Koto. The notes are: 1 (C4), 2 (D4), 3 (E4), 4 (F#4), 5 (G4), 6 (A4), 7 (B4), 8 (C5), 9 (D5), 10 (E5), 11 (F#5), 12 (G5), 13 (A5).

Koto:

Left hand techniques:



Three measures of Koto notation in treble clef. The first measure shows a slur over two notes labeled "Oshi-biki". The second measure shows a note with a "ツ" symbol above it, labeled "Tsuki-iro". The third measure shows a note with a "+" symbol above it, labeled "Left hand pizz.". To the right, a Flute staff in bass clef shows a note with a "+" symbol above it, labeled "Fluctuating multiphonics".

This music is copyright protected

Harp - tuning (26 strings Harpsicle Harp):



A single staff of music in bass clef showing the tuning of a 26-string Harpsicle Harp. The notes are: 1 (C2), 2 (D2), 3 (E2), 4 (F2), 5 (G2), 6 (A2), 7 (B2), 8 (C3), 9 (D3), 10 (E3), 11 (F3), 12 (G3), 13 (A3), 14 (B3), 15 (C4), 16 (D4), 17 (E4), 18 (F4), 19 (G4), 20 (A4), 21 (B4), 22 (C5), 23 (D5), 24 (E5), 25 (F5), 26 (G5).



Figuring:
● a key depressed
○ a key not depressed
○ a part of the mechanism that is not normally used
URL: <http://www.nbnoter.com>

"Ame"

for
flute, koto and harp

Karsten Brustad

Score

♩ = 54

Flute

whistle tone δ^{va}

Koto

Tsuki-iro ツ

pp

Harp

p

Fl.

whistle tone δ^{va}

pp

Koto

Left hand pizz.

Oshi-biki

whistle tone δ^{va}

whistle tone δ^{va}

p

Harp

p

"Ame"

13

Fl. whistle tone *pp* *pp* fluctuating multiphonics *pp* *mp* *pp*

Koto *p*

Hp. *p*

19

Fl. fluctuating multiphonics *pp* *mp* *pp* airy sound fluctuating multiphonics *pp*

Koto *p*

Hp. *p*

"Ame"

fluctuating multiphonics

6
23

Fl.

mp *pp* *pp* *mp* *pp*

Koto

23

Hp.

whistle tone

A

whistle tone

27

Fl.

pp *pp*

Koto

27

mf *p* *p*

Hp.

27

mf *p*

"Ame"

whistle tone

whistle tone 7

31

Fl.

Koto

Hp.

pp

p

p

35

Fl.

Koto

Hp.

whistle tone

airy sound flz.

pp

pp



"Ame"

8
39

Fl. airy sound flz. ord. airy sound 3 airy sound 3 3 3

Koto

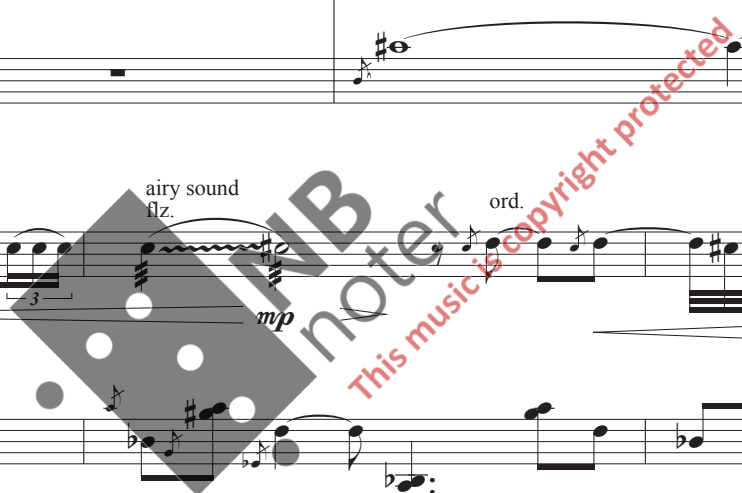
Hp.

43

Fl. airy sound 3 flz. ord. flz. ord.

Koto

Hp.



"Ame"

46

Fl. *mf* *flz.* *ord.* *flz.* *ord.*

Koto

Hp.

49

Fl. *ff* *a tempo* *flz.*

Koto *ff*

Hp. *ff*

10
52

Fl.

whistle tone
8^{va}

"Ame"

whistle tone
8^{va}

pp

Koto

52

pp

p

p

Hp.

52

pp

p

56

Fl.

(8^{va})

whistle tone
8^{va}

pp

rit.

Koto

56

+

Hp.

56

p