

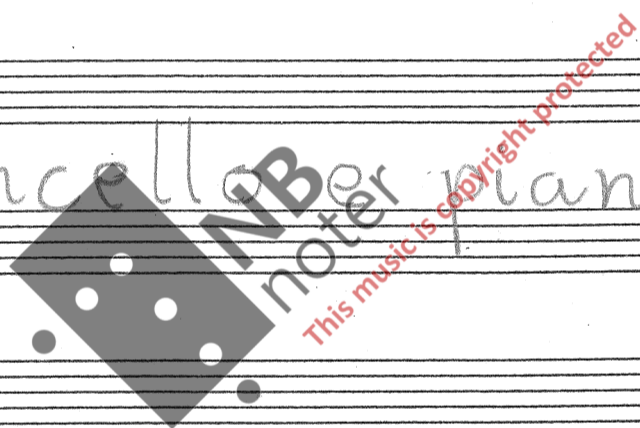
Bjørn Breimo:

SONATA

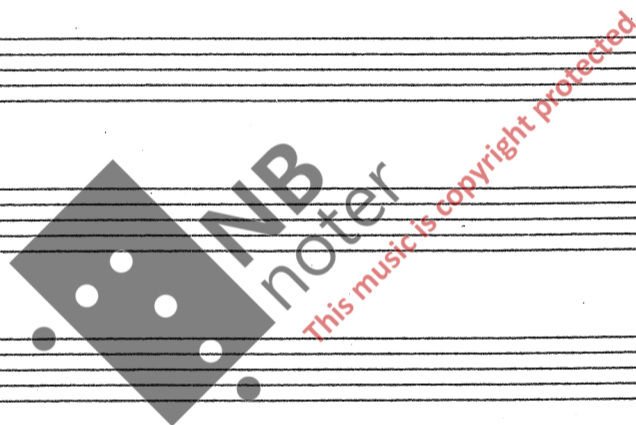
per violoncello e pianoforte

1992

Durata: 14-15 min.



Handwritten musical notation on a series of ten five-line staves. The notation is mostly blank, with a central watermark and a title at the bottom.



Til Ole Morten Gimle

Sonata

per Violoncello e Pianoforte

Bjørn Breimo, 1992

♩ = 76

① Molto legato al ②

②

Violoncello

Pianoforte

Ped.

③

Musical notation for measures 3 and 4. The Violoncello part (top staff) features a melodic line with slurs and dynamics of *pp*. The Pianoforte part (middle staves) provides harmonic accompaniment with *pp* dynamics. A Pedal point is indicated at the bottom of the page.

④

Musical notation for measures 5 and 6. The Violoncello part (top staff) includes a triplet in measure 6. The Pianoforte part (middle staves) continues the accompaniment. A Pedal point is indicated at the bottom.

⑥

Musical notation for measures 7 and 8. The Violoncello part (top staff) features triplets and slurs. The Pianoforte part (middle staves) provides accompaniment. A Pedal point is indicated at the bottom.



Handwritten musical score for measures 7 and 8. Measure 7 features a treble clef with a melodic line containing several triplet markings (indicated by '3' and brackets) and a dynamic marking of *p*. The bass clef accompaniment consists of a simple harmonic pattern. Measure 8 continues the melodic line with more triplets and a dynamic marking of *p*. A circled number '8' is written above the first measure of this system. A circled number '2' is written above the first measure of the previous system.

Handwritten musical score for measures 9 and 10. Measure 9 features a treble clef with a melodic line and a dynamic marking of *mp*. The bass clef accompaniment has a dynamic marking of *mp*. Measure 10 continues the melodic line with a dynamic marking of *mp*. A circled number '9' is written above the first measure of this system, and a circled number '10' is written above the first measure of the second system.

Handwritten musical score for measure 11. The treble clef melodic line has a dynamic marking of *mp*. The bass clef accompaniment has a dynamic marking of *mp*. A large watermark is overlaid on the score, reading "NB noter" and "This music is copyright protected". A circled number '11' is written above the first measure of this system.

Handwritten musical score for measures 12 and 13. Measure 12 features a treble clef with a melodic line and a dynamic marking of *mp*. The bass clef accompaniment has a dynamic marking of *mp*. Measure 13 continues the melodic line with a dynamic marking of *mf* and includes triplet markings. A circled number '12' is written above the first measure of this system, and a circled number '13' is written above the first measure of the second system.

3

14

Handwritten musical score for exercise 14. The top staff is in treble clef with a 7/8 time signature. It contains a melodic line with eighth notes, some beamed in groups of three, and slurs. The dynamic marking *mf* is present. The bottom staff is in bass clef and contains a bass line with slurs. The dynamic marking *mf* is also present. There are some handwritten annotations in the bass staff, including a circled '3' and some curved lines.

15

Handwritten musical score for exercise 15. The top staff is in treble clef with a 7/8 time signature. It contains a melodic line with eighth notes, some beamed in groups of three, and slurs. The dynamic marking *mf* is present. The bottom staff is in bass clef and contains a bass line with slurs. The dynamic marking *mf* is also present. There are some handwritten annotations in the bass staff, including a circled '3' and some curved lines.

16

Handwritten musical score for exercise 16. The top staff is in treble clef with a 7/8 time signature. It contains a melodic line with eighth notes, some beamed in groups of three, and slurs. The dynamic marking *mf* is present. The bottom staff is in bass clef and contains a bass line with slurs. The dynamic marking *mf* is also present. There are some handwritten annotations in the bass staff, including a circled '3' and some curved lines. A large watermark is overlaid on the score.



Handwritten musical score for exercise 17. The top staff is in treble clef with a 7/8 time signature. It contains a melodic line with eighth notes, some beamed in groups of three, and slurs. The dynamic marking *f* is present. The bottom staff is in bass clef and contains a bass line with slurs. The dynamic marking *f* is also present. There are some handwritten annotations in the bass staff, including a circled '3' and some curved lines.

18

Handwritten musical notation for measure 18. The system consists of a single treble clef staff and a grand staff (treble and bass clefs). The treble staff contains a melodic line with eighth notes, slurs, and triplet markings. The grand staff contains a bass line with a series of eighth notes. Dynamics include a forte 'f' marking in both staves.

19

Handwritten musical notation for measure 19. Similar to measure 18, it features a treble staff with a melodic line and a grand staff with a bass line. The notation includes slurs, triplet markings, and a forte 'f' dynamic.

20

Handwritten musical notation for measure 20. The system includes a treble staff and a grand staff. The treble staff has a melodic line with slurs and triplet markings. The grand staff has a bass line. A watermark 'NB noter' and 'This music is copyright protected' is overlaid on the system. Dynamics include a forte 'f' marking.

Handwritten musical notation for the final system on the page. It consists of a treble staff with a melodic line and a grand staff with a bass line. The notation includes slurs, triplet markings, and a forte 'f' dynamic.

5

Handwritten musical score for measures 21 and 22. Measure 21 is circled and contains a triplet of eighth notes, a sixteenth-note run, and a sixteenth-note triplet. Measure 22 is circled and contains a triplet of eighth notes, a sixteenth-note run, and a sixteenth-note triplet. The score includes a treble clef, a grand staff, and dynamic markings of *ff*. A fermata is placed over the end of measure 21.

Handwritten musical score for measures 23 and 24. Measure 23 is circled and contains a triplet of eighth notes, a sixteenth-note run, and a sixteenth-note triplet. Measure 24 is circled and contains a triplet of eighth notes, a sixteenth-note run, and a sixteenth-note triplet. The score includes a treble clef, a grand staff, and dynamic markings of *ff*. A fermata is placed over the end of measure 23.

Handwritten musical score for measures 25 and 26. Measure 25 contains a sixteenth-note run and a sixteenth-note triplet. Measure 26 contains a sixteenth-note run and a sixteenth-note triplet. The score includes a treble clef, a grand staff, and dynamic markings of *ff*. A fermata is placed over the end of measure 26.

Handwritten musical score for measures 27 and 28. Measure 27 contains a triplet of eighth notes, a sixteenth-note run, and a sixteenth-note triplet. Measure 28 contains a triplet of eighth notes, a sixteenth-note run, and a sixteenth-note triplet. The score includes a treble clef, a grand staff, and dynamic markings of *ff*. A fermata is placed over the end of measure 28.



This music is copyright protected

25

(caccell. al trem.)

Handwritten musical score for measures 25-26. The top staff is a single melodic line starting with a *fff* dynamic. The bottom two staves are a piano accompaniment. The piano part begins with *Presto possibile* and *ff*, then transitions to a sustained chord with a *p* dynamic. A circled asterisk *(*)* is written above the piano part.

26

Presto possibile

(molto rit.)

27 *a tempo*

Handwritten musical score for measures 26-27. Measure 26 features a melodic line with a *p* dynamic and a piano accompaniment with *pp* dynamics and a tremolo effect. Measure 27 starts with *a tempo* and features a melodic line with *ff* dynamics and a piano accompaniment with *ff* dynamics. A large watermark is present in the center of the page.



28

Handwritten musical score for measures 27-28. Measure 27 continues with a melodic line and piano accompaniment. Measure 28 features a melodic line with triplets and a piano accompaniment with triplets. Dynamics include *ff* and *pp*.

**) Independent of the cello part **) This figure should be repeated continuously*

7

29

Handwritten musical score for measures 29. The system includes a treble clef staff with a melodic line and a grand staff (piano and bass clefs) with accompaniment. The piano part features chords with accidentals and dynamic markings such as *pp* and *ff*. The treble staff has notes with slurs and dynamic markings like *ff* and *v.*

30

Handwritten musical score for measures 30. This system introduces triplet markings (indicated by a '3' over a bracket) in both the treble and piano parts. The piano accompaniment consists of complex chordal textures with many accidentals. Dynamic markings include *pp* and *ff*. A watermark for 'NB noter' is visible over the piano part.

31

Handwritten musical score for measures 31. The system continues with the treble and grand staves. The piano part features a series of chords with various accidentals and dynamic markings like *pp* and *ff*. The treble staff shows a melodic line with slurs and dynamic markings such as *ff* and *v.*

8
32

Handwritten musical score for measures 30-31. The top staff is a single melodic line with a forte (ff) dynamic. The middle two staves are a piano accompaniment with various dynamics including ff, pp, and mf. A circled measure number '32' is written above the first measure of the piano part. A circled measure number '8' is written above the first measure of the top staff. A star symbol is written below the piano part.

Handwritten musical score for measures 32-33. The top staff is a single melodic line. The middle two staves are a piano accompaniment with a forte (f) dynamic. A large watermark 'NB noter' is overlaid on the score, with the text 'This music is copyright protected' written diagonally across it.

Handwritten musical score for measures 34-35. The top staff is a single melodic line with a piano (pp) dynamic. The middle two staves are a piano accompaniment with a mezzo-forte (mf) dynamic. A circled measure number '33' is written above the first measure of the top staff.

Handwritten musical score system 1. It consists of three staves. The top staff contains a melodic line with eighth and sixteenth notes. The middle and bottom staves contain a piano accompaniment with sixteenth-note chords and arpeggiated figures. A 'pp' dynamic marking is present at the end of the system.

Handwritten musical score system 2. It consists of three staves. The top staff continues the melodic line. The middle and bottom staves continue the piano accompaniment. A 'sempre pp' dynamic marking is written above the top staff.

Handwritten musical score system 3. It consists of three staves. The top staff continues the melodic line. The middle and bottom staves continue the piano accompaniment. A large watermark 'NB noter' and 'This music is copyright protected' is overlaid on the system.

Handwritten musical score system 4. It consists of three staves. The top staff continues the melodic line. The middle and bottom staves continue the piano accompaniment.

Handwritten musical score system 1, featuring a treble clef, a key signature of one sharp (F#), and a 6/8 time signature. The system consists of three staves: a single melodic line on the top staff, a piano accompaniment on the middle staff, and a bass line on the bottom staff. The piano accompaniment features a repeating sixteenth-note pattern in the right hand and a more complex rhythmic pattern in the left hand. The number '6' is written above several of the sixteenth notes in the piano part.

Handwritten musical score system 2, continuing the piece with the same notation and structure as system 1.

Handwritten musical score system 3, continuing the piece. A large, semi-transparent watermark is overlaid on the system, reading "NB noter" in a diamond shape and "This music is copyright protected" in red text.

Handwritten musical score system 4, concluding the piece. The system includes the instruction "(trem. poco a poco)" written above the piano part and "(sempre pp)" written below the piano part. The piano accompaniment ends with a final chord and a fermata. A large asterisk is written at the bottom right of the system.

35

11

accelerando

Pronto possibile

36 Molto legato

37

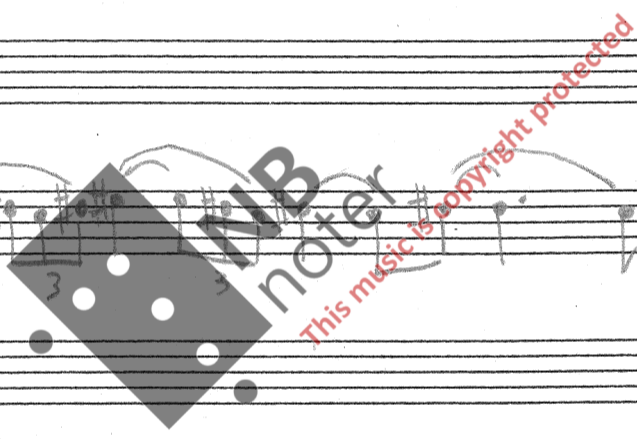
Handwritten musical score for exercise 37. The score is written on two systems of staves. The first system includes a treble clef staff with a melody of eighth notes, some beamed in groups of three, and a piano (p) dynamic marking. The second system includes a grand staff (treble and bass clefs) with a piano accompaniment consisting of chords and arpeggios, with a forte (f) dynamic marking. The key signature is one sharp (F#).

38

Handwritten musical score for exercise 38. The score is written on two systems of staves. The first system includes a treble clef staff with a melody of eighth notes, some beamed in groups of three, and a mezzo-forte (mf) dynamic marking. The second system includes a grand staff with a piano accompaniment consisting of chords and arpeggios, with a mezzo-forte (mf) dynamic marking. The key signature is one sharp (F#).

39

Handwritten musical score for exercise 39. The score is written on two systems of staves. The first system includes a treble clef staff with a melody of eighth notes, some beamed in groups of three, and a mezzo-piano (mp) dynamic marking. The second system includes a grand staff with a piano accompaniment consisting of chords and arpeggios, with a mezzo-piano (mp) dynamic marking. The key signature is one sharp (F#).



13

Handwritten musical notation for exercise 13. It consists of a single staff in treble clef. The melody is composed of eighth notes with various accidentals (sharps and naturals). There are four groups of triplets, each indicated by a bracket with the number '3' underneath. The notes are grouped by slurs.

40

Handwritten musical notation for exercise 40. It consists of two staves. The top staff is in treble clef and contains a melody of eighth notes with slurs and triplets. A piano (*p*) dynamic marking is present. The bottom staff is in bass clef and contains a bass line with slurs and triplets. A piano (*p*) dynamic marking is also present. There are some handwritten notes and markings below the bass staff.

41

Handwritten musical notation for exercise 41. It consists of two staves. The top staff is in treble clef and contains a melody of eighth notes with slurs. A pianissimo (*pp*) dynamic marking is present. The bottom staff is in bass clef and contains a bass line with slurs. A pianissimo (*pp*) dynamic marking is also present. There are some handwritten notes and markings below the bass staff.

NB
noter
This music is copyright protected

42

Handwritten musical notation for exercise 42. It consists of two staves. The top staff is in treble clef and contains a melody of eighth notes with slurs. A pianissimo (*pp*) dynamic marking is present. The bottom staff is in bass clef and contains a complex bass line with sixteenth-note patterns, slurs, and sixteenth-note chords. A pianissimo (*pp*) dynamic marking is also present.

15

45

Handwritten musical score for measures 15-45. The system includes a single treble clef staff and a grand staff (treble and bass clefs). The treble staff contains a melodic line with slurs, accents, and a triplet of eighth notes. The grand staff contains a complex accompaniment with many beamed notes and slurs. Dynamics include *ff*, *pp*, and *mp*. A circled measure number '45' is present at the end of the system.

46

Handwritten musical score for measures 46-80. The system includes a single treble clef staff and a grand staff. The treble staff continues the melodic line. The grand staff features a dense accompaniment with many beamed notes and slurs. Dynamics include *ff* and *pp*. A circled measure number '46' is present at the end of the system.

47

Handwritten musical score for measures 81-115. The system includes a single treble clef staff and a grand staff. The treble staff continues the melodic line. The grand staff features a dense accompaniment with many beamed notes and slurs. Dynamics include *ff* and *pp*. A circled measure number '47' is present at the end of the system.



This music is copyright protected

16

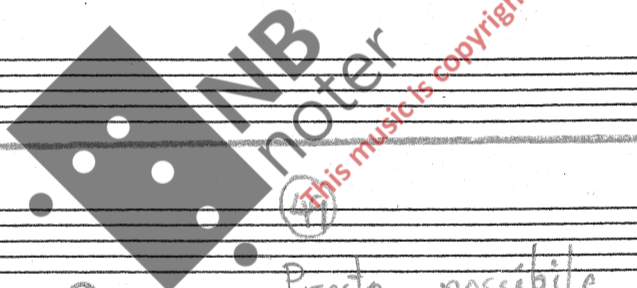
48

Handwritten musical score for the first system. The upper staff contains a melodic line with dynamics *ff* and articulation marks. The lower staff contains a piano accompaniment with dynamics *ffpp* and *ff*. The system concludes with a circled measure number 48, a sextuplet (6), and two triplets (3).

Handwritten musical score for the second system. The upper staff begins with dynamics *fff* and the tempo marking *Presto possibile*. The lower staff features a complex piano accompaniment with a tremolo effect at the end. A large watermark is present in the center of the page.

Handwritten musical score for the third system. The upper staff contains a melodic line with dynamics *f* and *fff*, and the tempo marking *Presto possibile*. The lower staff contains a piano accompaniment with dynamics *fff* and *pp*. The system concludes with a circled measure number 49.

Four empty musical staves at the bottom of the page.



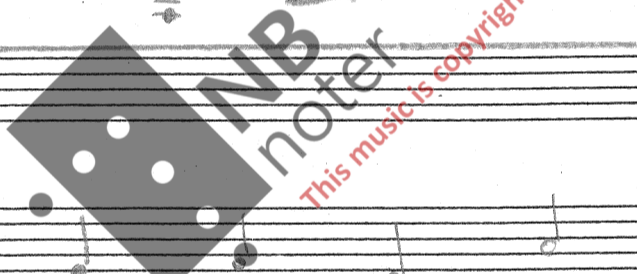
50

17

Handwritten musical score for the first system. It consists of three staves. The top staff is a vocal line with a treble clef and a wavy line below it. The middle staff is a piano line with a treble clef, starting with a whole note chord and followed by a series of chords with fingerings 3, 3, 6, 3, 6, 3, 6. The bottom staff is a piano line with a bass clef. Handwritten annotations include a circled '50' at the top, a circled '17' above the first staff, and 'pp' (pianissimo) written below the first two staves. The tempo marking 'a tempo' is written above the middle staff.

51 (a tempo)

Handwritten musical score for the second system. It consists of three staves. The top staff is a vocal line with a treble clef and a wavy line below it, containing a few notes. The middle staff is a piano line with a treble clef, featuring a series of chords with fingerings 6, 6, 6, 6, 6, 6, 6, 6, 6, 6. The bottom staff is a piano line with a bass clef, containing a series of notes. Handwritten annotations include a circled '51' at the top, 'a tempo' written next to it, and 'sempre pp' (sempre pianissimo) written below the top staff.



Handwritten musical score for the third system. It consists of three staves. The top staff is a vocal line with a treble clef and a wavy line below it. The middle staff is a piano line with a treble clef, featuring a series of chords with fingerings 6, 6, 6, 6, 6, 6, 6, 6, 6, 6. The bottom staff is a piano line with a bass clef, containing a series of notes.

Handwritten musical score for the fourth system. It consists of three staves. The top staff is a vocal line with a treble clef and a wavy line below it. The middle staff is a piano line with a treble clef, featuring a series of chords with fingerings 6, 6, 6, 6, 6, 6, 6, 6, 6, 6. The bottom staff is a piano line with a bass clef, containing a series of notes.

Handwritten musical score for the first system, featuring a vocal line and piano accompaniment. The piano part includes a treble clef with an 8-measure rest, followed by a series of chords marked with the number '6'. The bass line contains eighth-note patterns.

Handwritten musical score for the second system, continuing the vocal and piano parts from the first system.

Handwritten musical score for the third system, continuing the vocal and piano parts. A large watermark is present over this system.

MB
noter
This music is copyright protected

Handwritten musical score for the fourth system, starting with a circled measure number '52'. The piano part includes the instruction 'cresc. poco a poco' written above and below the staff.

(cresc.)

(cresc.)

(cresc.)

(cresc.)

(cresc.)

(cresc.)

NB noter
This music is copyright protected

(cresc.)

(cresc.)

*

53

mp

mp

p

p

p

54

pp

pp

p

System 1: Treble clef with a simple melody. Grand staff with piano accompaniment in the right hand and bass clef accompaniment in the left hand. The piano part features a continuous sixteenth-note pattern with a '6' fingering below each measure.

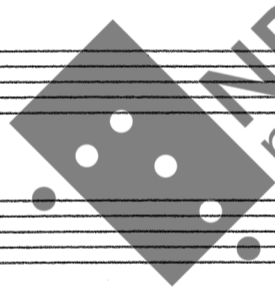
System 2: Treble clef with a simple melody. Grand staff with piano accompaniment in the right hand and bass clef accompaniment in the left hand. The piano part features a continuous sixteenth-note pattern with a '6' fingering below each measure.

System 3: Treble clef with a simple melody. Grand staff with piano accompaniment in the right hand and bass clef accompaniment in the left hand. The piano part features a continuous sixteenth-note pattern with a '6' fingering below each measure. A watermark 'NB noter' and 'This music is copyright protected' is overlaid on the system.

System 4: Treble clef with a melody consisting of sixteenth-note triplets, each marked with a '3'. Grand staff with piano accompaniment in the right hand and bass clef accompaniment in the left hand. The piano part features a continuous sixteenth-note pattern.

niente

Ryom Brimo, 28/8 - 92



NB
noter

This music is copyright protected