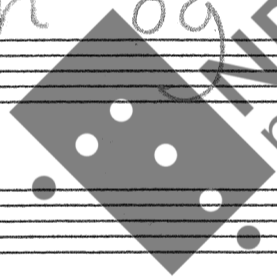


Bjørn Breimo:

Kyrie og Alleluia

for sopran og baryton



This music is copyright protected



Jil Asbjørg Brunstad

Kyrie og Alleluia

Byørn Breimo, 1993-94

♩ = 84

Sopr. *pp* Ky-rie, *p* Ky-rie,

M II: Fl. 8'

Org. *p* M I: 8'

P: 8' 16'

p

S. Ky-rie, Ky-rie

NB
noter
This music is copyright protected

S. e-le-i-son. Ky-rie

S. e - le - - i - son,³ e - le - - i - son,³

S. e - le - i - son, e - le - - i -

S. - son,³ e - - i - son,

S. e - le - i - son.

sempre Legato

S. *pp*
Chri - - - ste

S. *p*
Chri - - - ste,

S. Chri - - - ste

S. e - te - - - i - son,

S. e - - le - - - i - - son,

S. e - - le - - - i - son,

S. e - - le - - - i - son,

S. e - - le - - - i - - son,

S. *e - - le - - - i - - son.*

The first system of the handwritten musical score consists of three staves. The top staff is a vocal line in treble clef with lyrics "e - - le - - - i - - son." The middle staff is a piano accompaniment in treble clef, and the bottom staff is in bass clef. The music is written in a simple, hand-drawn style.

S.

The second system of the handwritten musical score consists of three staves. The top staff is a vocal line in treble clef. The middle staff is a piano accompaniment in treble clef, and the bottom staff is in bass clef. The music continues from the first system.

S. *ky - rie,*

The third system of the handwritten musical score consists of three staves. The top staff is a vocal line in treble clef with lyrics "ky - rie,". The middle staff is a piano accompaniment in treble clef, and the bottom staff is in bass clef. A large watermark is present over this system.

S. *ky - ri - e,*

The fourth system of the handwritten musical score consists of three staves. The top staff is a vocal line in treble clef with lyrics "ky - ri - e,". The middle staff is a piano accompaniment in treble clef, and the bottom staff is in bass clef. The music concludes with a final chord.

NB
 .noter
 This music is copyright protected

S. *e - le - - - - - son.* *xy* *ri -*

S. *e - le - - - - - i - - - - son.*

S. *xy* *ri - e* *e - le - - - - - i - son,*

S. *e - le - - - - - i - - - - son,*

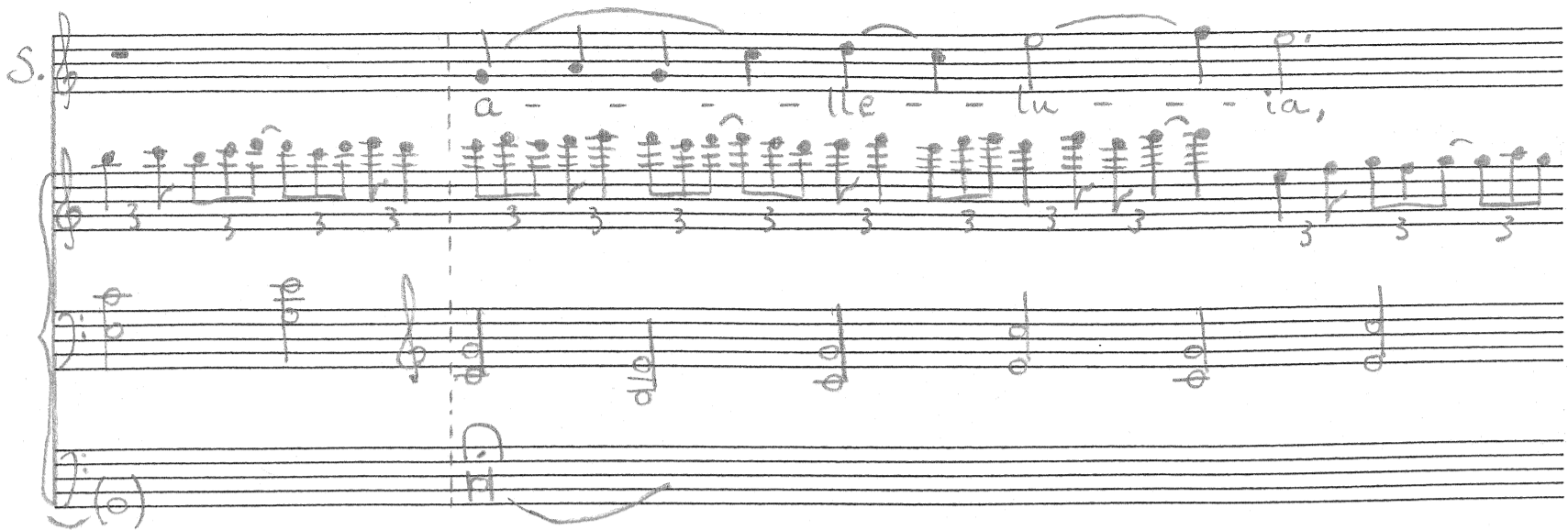
S. e - le - - - - - i - - - - - son.

S. sempre legato

S. lle - - - - - tu

S. a - - - - - lle - - - - - tu - - - - - ia,

S. a - - - lle - - - lu - - - ia,



S. a - - - lle - - - lu - - - ia,



S. a - - - lle - - - lu



S. a - - - lle - - - lu - - - ia,

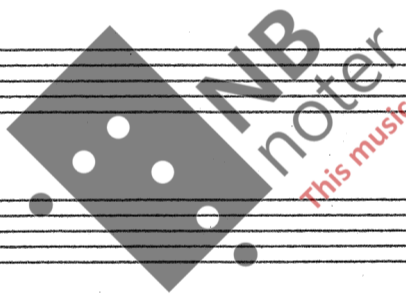


9

S. *a - - - te - tu - - - ia*

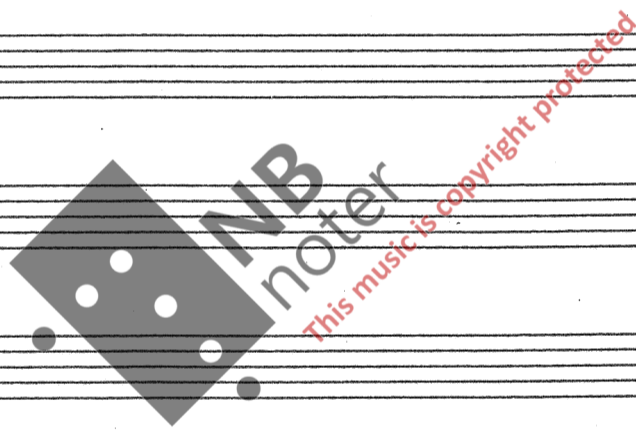
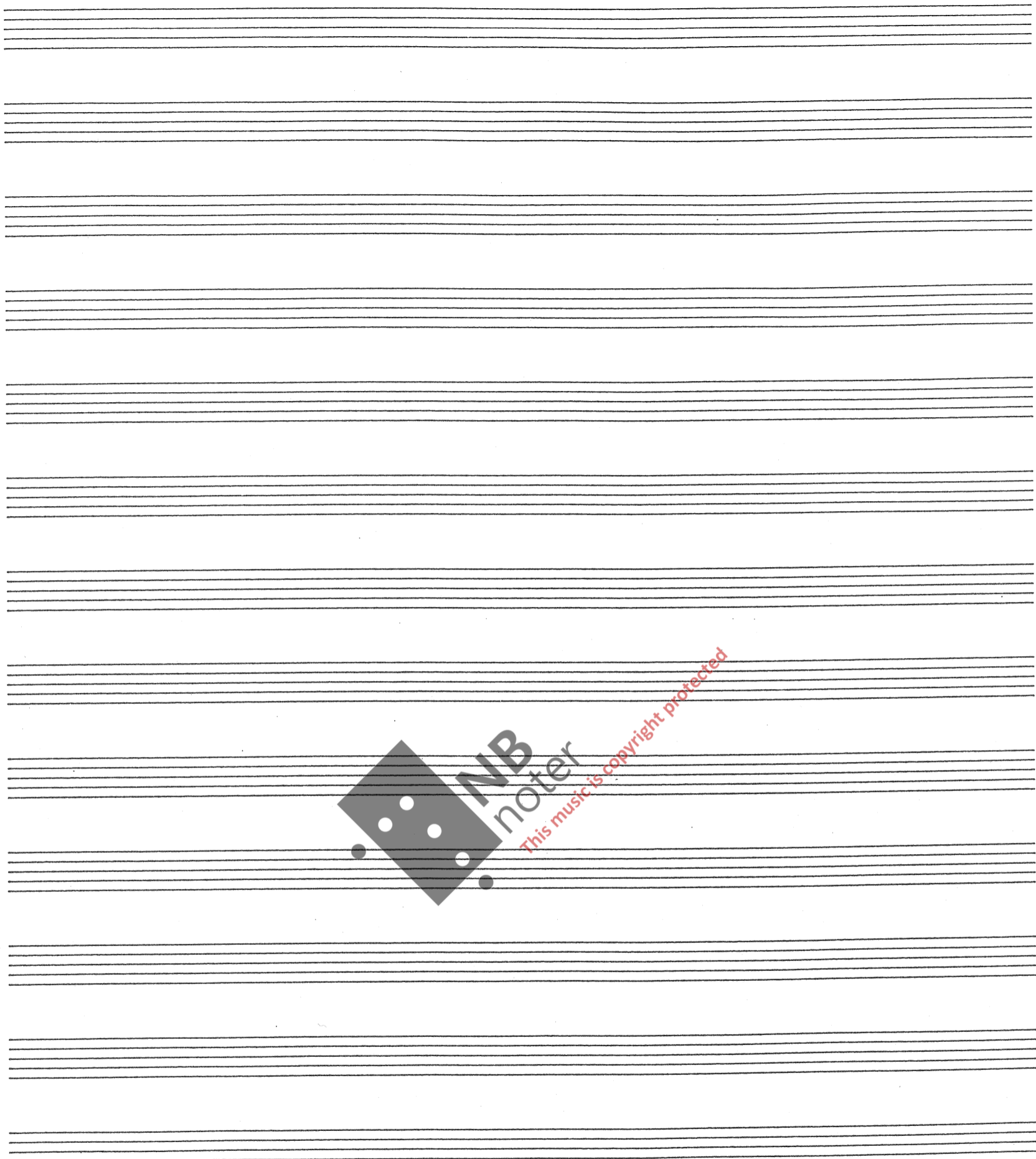
Molto ritardando

S.



This music is copyright protected

Ryom Krümo 5/1 - 94



Durata: 8 min.