

TERJE BJØRKLUND

Ritornell

Accordeon





Terje Bjørklund:

Ritornell.

for accordion.

2001





♭ = ca 70

15

sub
pp

Accel - e - rando

3

3

25

30

accele —

(55) ran do

(60)

♩ = 80 (65)

(70)

5.

75

80 accel.

e-ran-do

85

90

6.

95

$\text{♩} = 80$

Rit - - -

100

vibrate

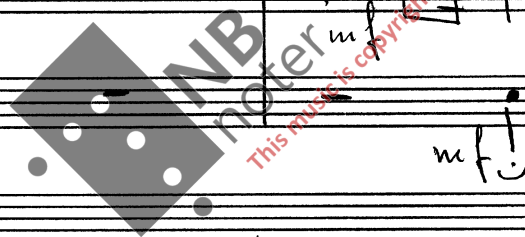
vibr

vibr

mf

mf

mf!



105

vibr. m

vibr. m

110

Handwritten musical score system 1, consisting of two staves. The top staff is in treble clef and the bottom in bass clef. The music features a series of chords and melodic lines, with some notes beamed together. The system ends with a double bar line.

115

Handwritten musical score system 2, consisting of two staves. The top staff is in treble clef and the bottom in bass clef. The music continues with chords and melodic lines. A watermark is visible across the system.

120

Handwritten musical score system 3, consisting of two staves. The top staff is in treble clef and the bottom in bass clef. The music features a series of chords and melodic lines. A watermark is visible across the system.

Handwritten musical score system 4, consisting of two staves. The top staff is in treble clef and the bottom in bass clef. The music features a series of chords and melodic lines. Above the top staff, there are markings for vibrato: "vibr" with a wavy line and an accent (^). The dynamic marking "pp" is present. The system ends with a double bar line and a large 'X' over the final measure.

125

Handwritten musical score system 5, consisting of two staves. The top staff is in treble clef and the bottom in bass clef. The music features a series of chords and melodic lines. The system ends with a double bar line.



