

Terje Bjørkland:

Ecclesia

For solister, kor, Brass, Orgel
og slagverk.

Bestillingsverk fra Olausfestdagene
i Trondheim til åpningskonserten 28/7-1994.
Med støtte fra Norsk Kulturråd.



[A] ♩ = 60

B♭ Cornets

Chimes *mf*

⑤

B♭ Cornets

E♭ Horn *mf*

B♭ Baritone *mf*

Trombones *mf*

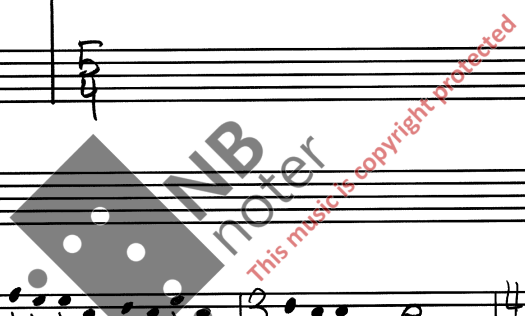
B♭ Bass *mf*

♩ = 50

Handwritten musical score for the first system, measures 1-4. The score includes staves for B♭ Cornets (4 parts), E♭ Horn, B♭ Baritone, Trombones, and B♭ Bass. The key signature is two flats (B♭ and E♭), and the time signature is 4/4. The first measure contains rests for all instruments. The second measure features a complex rhythmic pattern for the cornets, with notes beamed together in groups of four. The third and fourth measures continue this pattern with some rests and dynamic markings of *mf*.

Handwritten musical score for the second system, measures 5-8. The score is for B♭ Cornets. The first measure is marked with a circled '10' and the instruction *legato*. The music consists of continuous eighth-note passages across all four parts. The key signature remains two flats, and the time signature is 4/4.

Handwritten musical score for the third system, measures 9-12. The score includes staves for B♭ Cornets (2 parts), E♭ Horn, and B♭ Baritone. The key signature changes to one flat (B♭), and the time signature changes to 9/8. The music features eighth-note passages for the cornets and a more sparse accompaniment for the horn and baritone.



(15)

Cornets

Horn

Baritone

Chimes

f

(20)

Cornets

Horn

Baritone

Trombones

Bass

Timpani

mf

NB noter

This music is copyright protected

♩ = 60

orgel

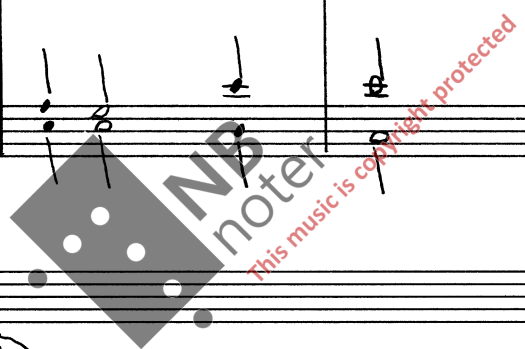
S: Te - per orbem ter - rarum A: sanc - ta confi - te - tur Ec -

mp

orgel

clesi - a T: Pa - trem im - mensae majes - tatis

30



Handwritten musical score for the first system. It features two vocal staves and two organ staves. The vocal parts have lyrics: "Te per or-bem ter-". The organ part includes a 5/4 time signature and various musical notations such as notes, rests, and dynamic markings like "mf".

Handwritten musical score for the second system, starting at measure 35. The lyrics are: "ra-rum san-cta confi-te-tur Ec-clesia". The organ part includes a 3/4 time signature and a watermark that reads "NB notes.com This music is copyright protected".

Handwritten musical score for the third system, starting at measure 40. It includes organ and tam-tam parts. The organ part has a dynamic marking of "mf". The tam-tam part is indicated by a double bar line and rhythmic markings at the bottom.

♩ = 90 An-gelus Do-mi-ni, (45) An-gelus Do-mi-ni, nun-ti-

S. *p*

a-vit Ma-ri-a (50) An-gelus Do-mi-ni, An-gelus Do-mi-ni

S. *mp*

A. An-gelus Do-mi-ni, An-gelus Do-mi-ni

(55) Et con-ce-pit de spi-ri-tu Sancto

S. *mp*

T. nun-ti-a-vit Ma-ri-a con-ce-pit de spi-ri-tu Sancto

An-gelus (60) Do-mi-ni, An-gelus Do-mi-ni nun-ti-

Orgel

a - vit Ma - ri - a

(65) ♩ = 110

Handwritten musical score for the first system. It features three vocal staves and three organ staves. The vocal parts have lyrics "a - vit Ma - ri - a" and "a - vit Ma - ri - a". The organ part includes dynamics like *p* and *mp*. The system concludes with a double bar line and a 4/4 time signature.

Handwritten musical score for the second system. It features three vocal staves and three organ staves. The organ part includes the instruction *poco rit.* and a tempo marking of 70. The system concludes with a double bar line and a 4/4 time signature.

Handwritten musical score for the third system, labeled "S." for Soprano. It features one vocal staff and two organ staves. The vocal part has lyrics "A - ve Ma - ri - a gra - tia ple - na". The organ part includes dynamics like *p* and *mp*. The system concludes with a double bar line and a 4/4 time signature.

Do-mi-nus tecum bene-dicta tu in mul-ti-tu-di-ni-bus et bene-dictus fructus ventris tu-i

(80) Jesus, et bene-dictus fructus ventris tu-i Jesus

Sancta Ma-ri-a, (85) Ma-ter De-i, or-a pro nobis pecca-

Sancta Ma-ri-a, Ma-ter De-i, or-a pro nobis pecca-

tori-bus nunc et in hó-ra mó-r-tis (90) nostrae A-men

to-ri-bus hó-ra nostrae A-men

Calmo

Solo ♩ = 110

Ecce, ancill-a Domini:

Ecce, ancill-a Domini:

Mezzo

Orgel

(95)

Fiat mi-hi se-cun-dum verbum tu-um

NB noter

This music is copyright protected

♩ = 70-80

♩ = 80 Sanc-ta Mari-a Ma-ter De-i (105) Sanc-ta Mari-a

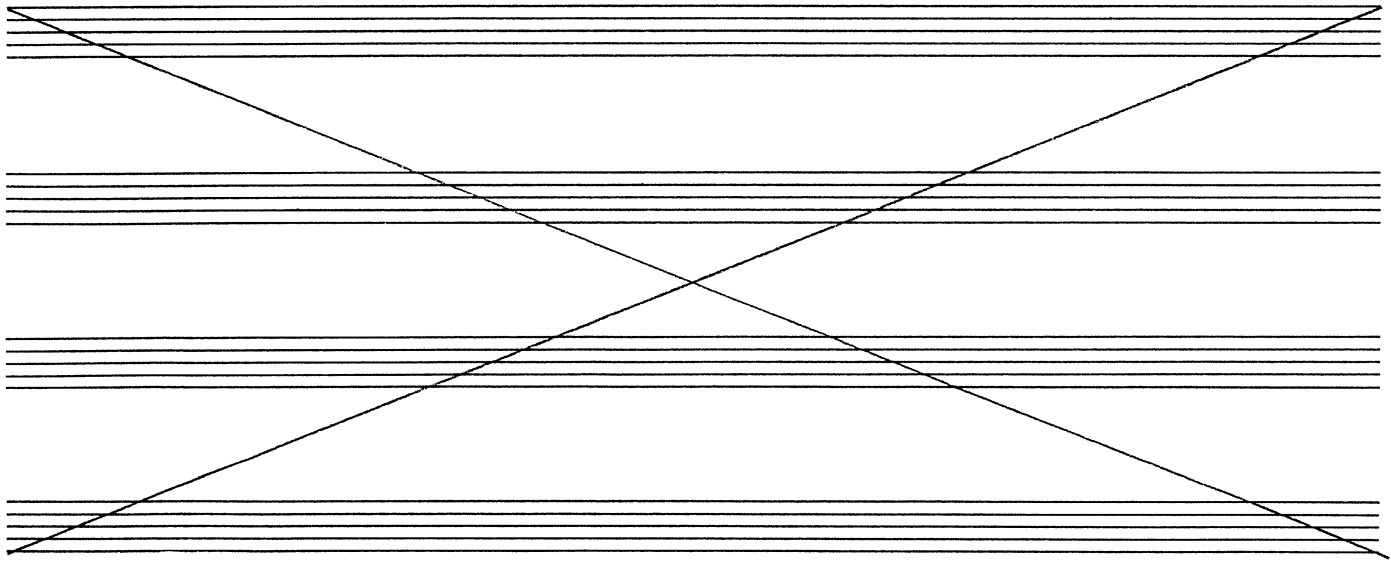
Sanc-ta Mari-a Ma-ter De-i Sanc-ta Mari-a

Ø-ra pro nobis peccato-ri-bus Ø-ra pro nobis peccato-ri-bus

Ø-ra pro nobis peccato-ri-bus Ø-ra pro nobis peccato-ri-bus

(110) Nunc et in hó-ra mor-tis nostrae A - men

Nunc et in hó-ra mor-tis nostrae A - men



Handwritten musical score for a brass and woodwind ensemble. The score includes parts for Cornets, Trumpets, Trombones, Basses, and Tuba. The music is in 4/4 time with a tempo marking of $\text{♩} = 70$. A circled measure number 115 is present. The dynamics are marked *mp* (mezzo-piano). The key signature has two sharps (F# and C#). The Tuba part is marked with a double bar line and an 'x' at the end.

Handwritten musical score for vocal parts. The lyrics are "Sancta Mari-a" and "Ma-ter De-i". The score includes a treble clef staff with lyrics and a bass clef staff with notes. A circled measure number 120 is present. The key signature has two sharps (F# and C#). A watermark "NBNB potter" and "this music is copyright protected" is visible over the score.

Handwritten musical score for vocal parts. The lyrics are "Sancta Ma-ri-a", "O-ra pro nobis", and "peccatori bus". The score includes a treble clef staff with lyrics and a bass clef staff with notes. The key signature has two sharps (F# and C#). The time signature is 4/4. The dynamics are marked *p* (piano).

125

O-ra pro nobis peccatori-bus Nunc et in hora

O-ra pro nobis peccatori-bus Nunc et in hora

mor-tis nostrae A-men

mor-tis nostrae A-men

130

$\text{♩} = 10$

Cornets
Horns
Baritone
Trombone
Bass
Timpani

$\text{♩} = 10$

This music is copyright protected

Orgel

S
A
T
B

mf

8

135

$\downarrow = 90$

Et

Et

Orgel

verbum caro factum est. Et ha-bi-tavit in nobis

verbum caro factum est. Et ha-bi-tavit in nobis

mf

140

Cornets

$\downarrow = 70$

f

145

Cornets

150

♩ = 60-70
 Solo: (S+A) A - ve Ma - ri - a a gratia ple - na

155

Do-mi-nus tecum bene-dicta tu in muli-e-ri-bus et bene-dictus fructus ventris tu-i

160

Jesus, et bene-dictus fructus ventris tu-i Jesus

165

Orgel

♩ = 90
 Ora pro nobis sancta Dei Geni-trix, Ora pro nobis, pro

mf

pro

nobis, pro nobis, pro no-bis

(170)

nobis pro nobis, pro no-bis ut digni effi-ci-a-mur pro-miss-

mf

f

(175) Ora pro nobis

ionibus, pro-miss- io-nibus Christi. Ut digni effi-ci-

mf

sancta De-i Geni-trix, Ora pro nobis, pro

a-mur pro-miss- io ni-bus pro-miss

nobis, pro nobis, pro no - bis (180) Ora pro nobis

io - nibus Christi, Chris - ti Ora pro nobis

Sancta Dei Ge - ni - trix Ge - ni - trix, Pro

Sancta Dei Ge - ni - trix Ge - ni - trix, Pro

poco accelerando (185) nobis, pro no - bis, ora pro no - bis = 90

orgel

nobis, pro no - bis, ora pro no - bis

Handwritten musical score for the first system. It includes staves for Bass (B♭ Bass), Orgel (Organ), and other instruments. The Bass staff has a treble clef and a key signature of two flats. The Orgel staff has a grand staff (treble and bass clefs) and a key signature of two flats. The music consists of several measures with notes and rests. A dynamic marking 'mp' is present. There are some handwritten annotations and a large scribble over the latter part of the system.

Handwritten musical score for the second system. It includes staves for B♭ Cornetts, B♭ Horn, B♭ Baritone, B♭ Trombone, B♭ Bass, and Orgel. The B♭ Cornetts staff has a treble clef and a key signature of two flats. The B♭ Horn staff has a treble clef and a key signature of two flats. The B♭ Baritone staff has a treble clef and a key signature of two flats. The B♭ Trombone staff has a treble clef and a key signature of two flats. The B♭ Bass staff has a bass clef and a key signature of two flats. The Orgel staff has a grand staff (treble and bass clefs) and a key signature of two flats. The music consists of several measures with notes and rests. A dynamic marking 'mp' is present. There is a large watermark 'NB noter' and 'This music is copyright protected' overlaid on the score.

195

Handwritten musical score for measures 195-200. The score includes staves for B♭ Cornetts, Horn, Baritone, Trombone, Bass, and Orgel. The music is in a key with one sharp (F#) and a common time signature. The notation includes various note values, rests, and accidentals.

200

Handwritten musical score for measures 200-205. The score includes staves for B♭ Cornetts, Horn, Baritone, Trombone, Bass, and Orgel. The music continues in the same key and time signature. A large watermark is present over the score: "NMB Inter This music is copyright protected".

205

Handwritten musical score for measures 205-208. The score includes staves for 3rd Cornetts, Horn, Baritone, Trombone, Bass, and Organ. The music is in a key with one sharp (F#) and a common time signature. The organ part features a complex texture with multiple voices.

210

Handwritten musical score for measures 210-213. The score includes staves for 3rd Cornetts, Horn, Baritone, Trombone, Bass, and Organ. The music continues in the same key and time signature. A large watermark 'NMB' is visible over the score, along with the text 'This music is copyright protected.'

215

Handwritten musical score for a band. The score consists of six staves, each with a different instrument label on the left: Bb Cornets, Horn, Baritone, Trombone, Bass, and Orgel. The music is written in treble clef with a key signature of one sharp (F#). The Bb Cornets part features a melodic line with eighth and sixteenth notes. The Horn, Baritone, and Trombone parts provide harmonic support with chords and sustained notes. The Bass part has a simple bass line. The Orgel part features a complex accompaniment with chords and moving lines. A large watermark 'NB noter' is overlaid on the bottom half of the page, with the text 'This music is copyright protected' written diagonally across it.

♩ = 50 Pa-ter Nos-ter, qui es in caelis: Sancti-fi-ce-tur

220

Pa-ter Nos-ter, qui es in caelis: Sancti-fi-ce-tur

no-men tu-um, Ad-ve-niat regnum tu-um

no-men tu-um, Ad-ve-niat regnum tu-um

225 Fi-at vo-lun-tas tu-a Si-cut in caelo et in ter-ra

Fi-at vo-lun-tas tu-a Si-cut in caelo et in ter-ra

230

Cornet

Orgel

Handwritten musical score for the first system, featuring three staves with treble and bass clefs. The music includes various rhythmic patterns and accidentals.

Handwritten musical score for the second system, starting with measure numbers 235 and 240 circled. It includes a watermark for "NB noter" and "This music is copyright protected".

Pa-nem Nostrum quo-ti-di-a-num da no-bis ho-di-e

Panem Nostrum quo-ti-di-a-num da no-bis ho-di-e

orgel

Col Chorus →

Handwritten musical score for the third system, including Latin lyrics and organ accompaniment. The lyrics are "Pa-nem Nostrum quo-ti-di-a-num da no-bis ho-di-e".

(245) Et di- mit- te no- bis de- bi- ta nostra,

Et di- mit- te no- bis de- bi- ta nostra,

Et di- mit- te no- bis de- bi- ta nostra,

sicut et nos di- mi- ti- mus debi- to- ribus no- stris. Et ne nos indu- cas in

sicut et nos di- mi- ti- mus debi- to- ribus no- stris. Et ne nos indu- cas in

sicut et nos di- mi- ti- mus to- ribus no- stris. Et ne nos indu- cas in

ten- ta- tio- nem. Sed libera nos a ma- lo, sed libera nos a ma- lo, sed

ten- ta- tio- nem. Sed libera nos a ma- lo, sed libera nos a ma- lo, sed

ten- ta- tio- nem. Sed libera nos a ma- lo, sed libera nos a ma- lo, sed

libera nos a ma- lo, a- men, a- men

libera nos a ma- lo, a- men, a- men

libera nos a ma- lo, a- men, a- men, a-



Handwritten musical score for three staves. The top staff is for voices, with the word "men" written below it. The middle staff is for organ, with the word "orgel" written to its left. The bottom staff is for timpani, with the word "trimes" written to its left and a dynamic marking "mf" below it. The music is written in treble clef and consists of three measures. The first measure shows a vocal line with a half note and a quarter note, and an organ line with a half note and a quarter note. The second measure shows a vocal line with a half note and a quarter note, and an organ line with a half note and a quarter note. The third measure shows a vocal line with a half note and a quarter note, and an organ line with a half note and a quarter note. The timpani part has a half note in the first measure and quarter notes in the second and third measures.

