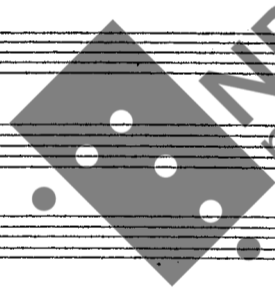


Edward Grieg

Sonate opus 7



This music is copyright protected

Arr. for strykeorkester

Sv. B

Bergen, januar 1960



Alegro moderato

Handwritten musical score for the first system, featuring:

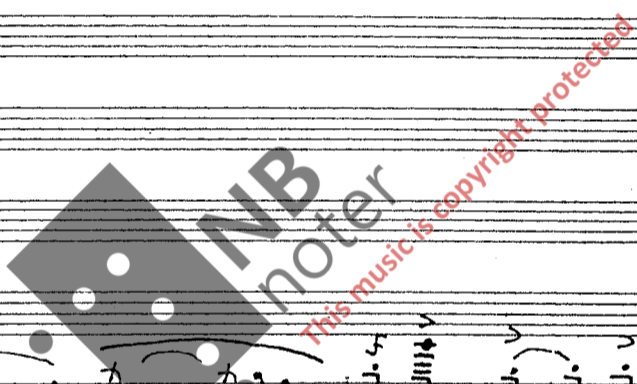
- I** (First Violin): Treble clef, 4/4 time, starting with a *p* dynamic.
- II** (Second Violin): Treble clef, 4/4 time, starting with a *son A* marking.
- Br.** (Brass): Treble clef, 4/4 time, starting with a *p* dynamic.
- Vc.** (Violoncello): Bass clef, 4/4 time, starting with a *p* dynamic.
- Kb.** (Kontrabaß): Bass clef, 4/4 time, starting with a *p* dynamic.

The score includes various musical notations such as slurs, ties, and dynamic markings like *p*, *pp*, and *sf*.

Handwritten musical score for the second system, featuring:

- F I** (First Flute): Treble clef, 4/4 time, starting with a *p* dynamic and *cresc.* marking.
- F II** (Second Flute): Treble clef, 4/4 time, starting with a *p* dynamic.
- Br.** (Brass): Bass clef, 4/4 time, starting with a *pp* dynamic.
- Vc.** (Violoncello): Bass clef, 4/4 time, starting with a *son A* marking.
- Kb.** (Kontrabaß): Bass clef, 4/4 time, starting with a *son A* marking.

The score includes various musical notations such as slurs, ties, and dynamic markings like *p*, *mf*, *sf*, *pp*, and *cresc.*

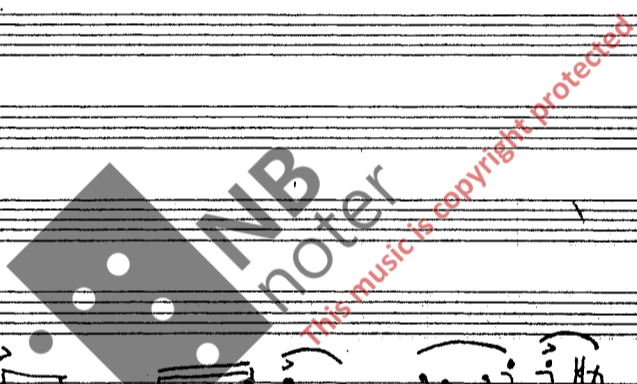


Handwritten musical score for strings I, II, Violins, Violas, Cellos, and Double Basses. The score is divided into two systems. The first system includes staves for I, II, Vln, Vla, Vcl, and Kb. Dynamics include *p*, *mf*, and *pp*. The second system contains empty staves. A watermark for 'NB noter' is visible across the middle of the page.

Handwritten musical score for Flutes I and II, Oboes, Clarinets, Bassoons, and Double Basses. The score is divided into two systems. The first system includes staves for FI, FII, Ob, Cl, Fag, and Kb. Dynamics include *f*, *non divisi*, and *arco*. The second system includes staves for FI, FII, Ob, Cl, Fag, and Kb. Dynamics include *f* and *arco*. A watermark for 'NB noter' is visible across the middle of the page.



Handwritten musical score for the first system, featuring five staves: Flute I (F I), Flute II (F II), Bassoon (B.r.), Violin (Vc), and Cello/Double Bass (Kb.). The music is in treble clef with a key signature of one sharp (F#). The Flute parts play a melodic line with various ornaments and dynamics. The Bassoon part has a rhythmic accompaniment with sixteenth notes. The Violin and Cello/Double Bass parts provide harmonic support. The Cello/Double Bass part includes markings for *pizz* and *arco*. The string parts are marked with *son A*.



Handwritten musical score for the second system, featuring five staves: Flute I (F I), Flute II (F II), Bassoon (B.r.), Violin (Vc), and Cello/Double Bass (Kb.). The music continues from the first system. The Flute parts have more complex melodic lines with many ornaments. The Bassoon part continues with its rhythmic accompaniment. The Violin and Cello/Double Bass parts continue their harmonic support. The Cello/Double Bass part includes markings for *pizz* and *arco*. The string parts are marked with *son A*.

Handwritten musical score for the first system, featuring staves for Flute I (Fl I), Flute II (Fl II), Clarinet (Cl.), Violin (Vc.), and Cello/Double Bass (Cb.). The score includes various musical notations such as notes, rests, and dynamic markings like 'p' and 'pp'. The word 'Sona A' is written in the Flute parts. A large watermark 'NB noter' is visible across the middle of the page.

Handwritten musical score for the second system, featuring staves for Flute I (Fl I), Flute II (Fl II), Clarinet (Cl.), Violin (Vc.), and Cello/Double Bass (Cb.). The score includes various musical notations such as notes, rests, and dynamic markings like 'p' and 'pp'. The word 'Sona A' is written in the Flute parts. A large watermark 'NB noter' is visible across the middle of the page.

poco rit A tempo

Handwritten musical score for the first system, featuring five staves: Flute I (FI), Flute II (FII), Clarinet (Br.), Violin (Vc), and Keyboard (Kb). The Flute parts are marked with "Som A". The Clarinet part includes dynamic markings of *pp* and *p*. The Violin part includes *pp* and *p*. The Keyboard part includes *pp* and *pizz*. The score is written in treble clef with a key signature of one sharp (F#).



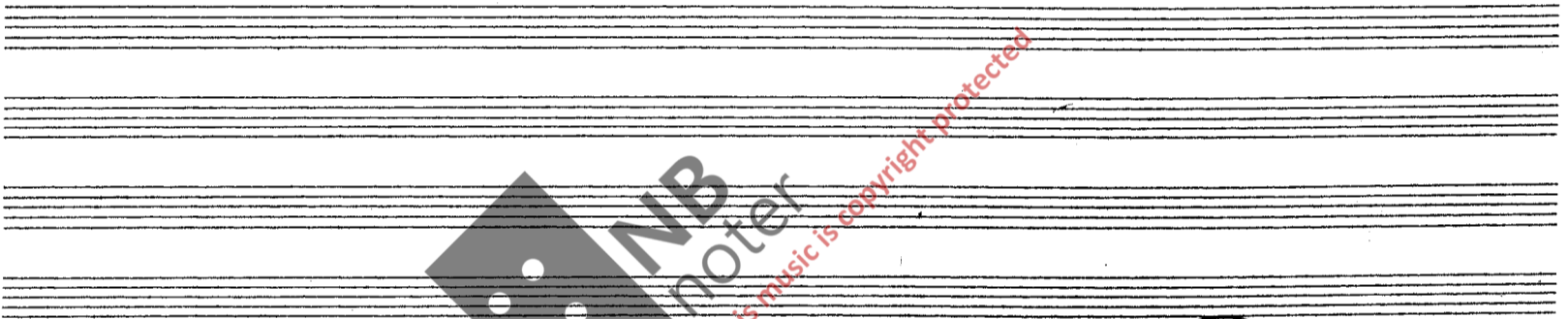
Handwritten musical score for the second system, featuring five staves: Flute I (FI), Flute II (FII), Clarinet (Br.), Violin (Vc), and Keyboard (Kb). The Flute parts are marked with "Som A". The Clarinet part includes dynamic markings of *p* and *pp*. The Violin part includes *p* and *pizz*. The Keyboard part includes *p*. The score is written in treble clef with a key signature of one sharp (F#).

Handwritten musical score for the first system, featuring five staves: Flute I (FI), Flute II (FII), Clarinet (Br.), Violin (Vc), and Cello/Double Bass (Kb). The score includes various musical notations such as notes, rests, and dynamic markings like *sm A* and *ff*. The Flute I part has a melodic line with slurs and accents. The Flute II part provides harmonic support with sustained notes. The Clarinet part has a melodic line with slurs. The Violin part features a complex, rhythmic pattern with many slurs and accents. The Cello/Double Bass part is mostly silent, with some notes in the final measure.

Empty musical staves for the second system.

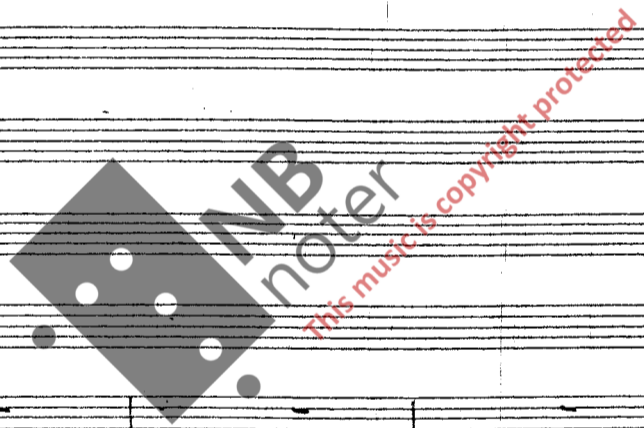
Handwritten musical score for the second system, featuring five staves: Flute I (FI), Flute II (FII), Clarinet (Br.), Violin (Vc), and Cello/Double Bass (Kb). The score includes various musical notations such as notes, rests, and dynamic markings like *sm A* and *arco*. The Flute I part has a melodic line with slurs and accents. The Flute II part provides harmonic support with sustained notes. The Clarinet part has a melodic line with slurs. The Violin part features a complex, rhythmic pattern with many slurs and accents. The Cello/Double Bass part is mostly silent, with some notes in the final measure.

Handwritten musical score for the first system, featuring five staves: Flute I (FI), Flute II (FII), Clarinet (Br.), Violin (Vc), and Cello/Double Bass (Kb). The score includes various musical notations such as notes, rests, and dynamic markings like *pp* and *p*. The key signature is one flat (B-flat major or F minor), and the time signature is 4/4. The first staff (FI) contains a melodic line with triplets and slurs. The second staff (FII) has a similar melodic line. The third staff (Br.) features a rhythmic accompaniment with eighth notes. The fourth staff (Vc) and fifth staff (Kb) provide harmonic support with chords and single notes.



Handwritten musical score for the second system, featuring five staves: Flute I (FI), Flute II (FII), Clarinet (Br.), Violin (Vc), and Cello/Double Bass (Kb). The score continues the musical piece with similar notation to the first system. The key signature changes to two flats (B-flat major or F minor), and the time signature remains 4/4. The first staff (FI) continues the melodic line with slurs and accents. The second staff (FII) follows with a similar melodic line. The third staff (Br.) continues the rhythmic accompaniment. The fourth staff (Vc) and fifth staff (Kb) continue the harmonic support.

Handwritten musical score for measures 1-4. The score is arranged in five staves, labeled FI, FII, Br, Vc, and Kb on the left. The key signature is two flats (B-flat and E-flat), and the time signature is 4/4. The first three measures are marked with a dynamic of *f* and contain melodic lines for all instruments. The fourth measure is marked with a dynamic of *pp* and features a chordal texture. The notation includes various note values, rests, and slurs.



Handwritten musical score for measures 5-9. The score continues with five staves (FI, FII, Br, Vc, Kb). The key signature changes to one flat (B-flat), and the time signature remains 4/4. The first two measures are mostly rests for the upper instruments, with some activity in the lower staves. The final three measures feature more complex melodic and harmonic development across all instruments, including many slurs and ties.

Handwritten musical score for the first system, featuring five staves: Flute I (Fl. I), Flute II (Fl. II), Bassoon (Br.), Violin (Vc.), and Cello/Double Bass (Kb.). The music is in treble clef with a key signature of one sharp (F#). The Flute I part begins with a series of sixteenth-note runs, some marked with accents and slurs. The Flute II part has a similar melodic line. The Bassoon part provides harmonic support. The Violin part features a melodic line with some triplets. The Cello/Double Bass part has a rhythmic accompaniment. The score includes dynamic markings such as *f*, *pp*, and *pppp*, and articulation marks like accents and slurs. The word *San A* is written below the first two staves.



Handwritten musical score for the second system, featuring five staves: Flute I (Fl. I), Flute II (Fl. II), Bassoon (Br.), Violin (Vc.), and Cello/Double Bass (Kb.). The music is in treble clef with a key signature of one sharp (F#). The Flute I part has a melodic line with the instruction *crescendo poco a poco* written below it. The Flute II part has a similar melodic line with the instruction *crescendo poco a poco*. The Bassoon part has a melodic line with the instruction *crescendo poco a poco*. The Violin part has a melodic line with the instruction *crescendo poco a poco*. The Cello/Double Bass part has a rhythmic accompaniment with the instruction *crescendo poco a poco*. The score includes dynamic markings such as *p*, *f*, *pp*, and *ppp*, and articulation marks like accents and slurs. The word *San A* is written below the first two staves.

molto rit. a tempo

Handwritten musical score for the first system, featuring five staves: Flute I (FI), Flute II (FII), Clarinet (Cl.), Violin (Vc.), and Cello/Double Bass (Cb.). The score includes various musical notations such as notes, rests, and dynamic markings like 'p' (piano) and 'f' (forte). The Flute parts are marked with 'son A'. The Clarinet part has 'tr' (trills) and 'p' markings. The Violin and Cello/Double Bass parts also feature 'p' markings and some slurs. The bottom of the system shows a few notes on a grand staff.

Handwritten musical score for the second system, continuing the five instruments: Flute I (FI), Flute II (FII), Clarinet (Cl.), Violin (Vc.), and Cello/Double Bass (Cb.). This system contains more complex melodic lines and includes markings such as 'pizz' (pizzicato) and 'son A'. The Flute parts continue with 'son A' markings. The Clarinet part has 'pizz' markings. The Violin and Cello/Double Bass parts also have 'pizz' markings. The bottom of the system shows a few notes on a grand staff.



Handwritten musical score for the first system, featuring five staves labeled FI, FII, Br., Vc, and Kb. The music includes various notes, rests, and dynamic markings such as 'p' and 'pizz'. The notation is dense with many notes and rests, and includes some performance instructions like 'Som A' and 'pizz'.

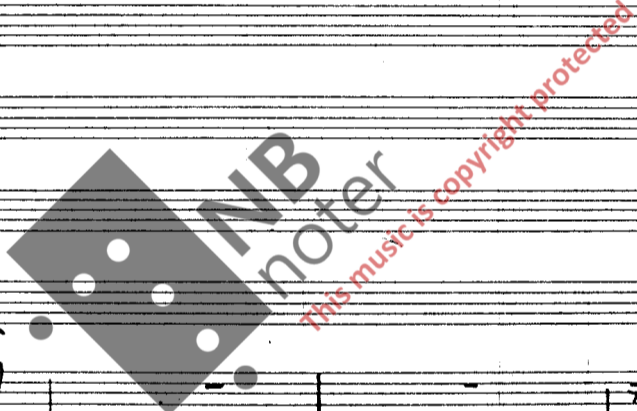
Handwritten musical score for the second system, featuring five staves labeled FI, FII, Br., Vc, and Kb. The music includes various notes, rests, and dynamic markings such as 'mf' and 'f'. The notation is dense with many notes and rests, and includes some performance instructions like 'mf' and 'f'.



sostenuto

Handwritten musical score for the first system, featuring five staves: Flute I (FI), Flute II (FII), Bassoon (Bt), Violin (Vc), and Cello/Double Bass (Kb). The music is in G major and 4/4 time. The Flute parts have various ornaments and slurs. The Bassoon part includes a dynamic marking of *p*. The Violin and Cello/Double Bass parts have dynamic markings of *p* and *pizz*. The Cello/Double Bass part ends with the marking *arco*.

Handwritten musical score for the second system, continuing the five staves: Flute I (FI), Flute II (FII), Bassoon (Bt), Violin (Vc), and Cello/Double Bass (Kb). The music continues with similar notation and dynamics. The Flute parts have various ornaments and slurs. The Bassoon part includes a dynamic marking of *p*. The Violin and Cello/Double Bass parts have dynamic markings of *p* and *pizz*. The Cello/Double Bass part ends with the marking *arco*.



poco rit.

a tempo

Handwritten musical score for the first system, featuring staves for Flute I (FI), Flute II (FII), Bassoon (Br.), Violin (Vc), and Cello/Double Bass (Kb). The score includes dynamic markings such as *ff*, *f*, and *p*, and performance instructions like *arco* and *com A*. The notation includes various rhythmic values and articulation marks.



Handwritten musical score for the second system, continuing the instrumentation from the first system (FI, FII, Br., Vc, Kb). This system features dynamic markings such as *pp* and *f*, and includes performance instructions like *arco*. The notation continues with various rhythmic patterns and articulation.

Allegro molto

Handwritten musical score for the first system, featuring five staves: Flute I (Fl I), Flute II (Fl II), Bassoon (Bn), Violin (Vc), and Cello/Double Bass (Cb). The music is in 3/4 time with a key signature of one flat (B-flat major or D minor). The Flute I part begins with a dynamic marking of *p* and includes the instruction "poco rit" above the staff. The Flute II part also starts with *p*. The Bassoon part begins with *p*. The Violin part starts with *p* and includes the instruction "2 soli" above the staff. The Cello/Double Bass part begins with *p* and includes the instruction "I SOLO ALI" above the staff. The score includes various musical notations such as notes, rests, and dynamic markings.

Handwritten musical score for the second system, featuring five staves: Flute I (Fl I), Flute II (Fl II), Bassoon (Bn), Violin (Vc), and Cello/Double Bass (Cb). The music continues from the first system. The Flute I part includes the instruction "sm A" above the staff. The Flute II part includes the instruction "sm A" above the staff. The Bassoon part includes the instruction "sm A" above the staff. The Violin part includes the instruction "sm A" above the staff. The Cello/Double Bass part includes the instruction "sm A" above the staff. The score includes various musical notations such as notes, rests, and dynamic markings.



Handwritten musical score for the first system, featuring five staves: Flute I (Fl I), Flute II (Fl II), Bassoon (Bsn), Violin (Vc), and Cello/Double Bass (Cb). The music is in 4/4 time with a key signature of one sharp (F#). The Flute I part has a melodic line with slurs and accents. The Flute II part has a rhythmic accompaniment. The Bassoon part has a similar rhythmic accompaniment. The Violin part has a melodic line with slurs and accents, and the Cello/Double Bass part has a rhythmic accompaniment. The score includes dynamic markings such as *sm* and *f*, and performance instructions like *Tutti* and *anc*.

Handwritten musical score for the second system, featuring five staves: Flute I (Fl I), Flute II (Fl II), Bassoon (Bsn), Violin (Vc), and Cello/Double Bass (Cb). The music is in 4/4 time with a key signature of one sharp (F#). The Flute I part has a melodic line with slurs and accents, and the Flute II part has a rhythmic accompaniment. The Bassoon part has a similar rhythmic accompaniment. The Violin part has a melodic line with slurs and accents, and the Cello/Double Bass part has a rhythmic accompaniment. The score includes dynamic markings such as *ff* and *f*, and performance instructions like *Tutti* and *anc*.



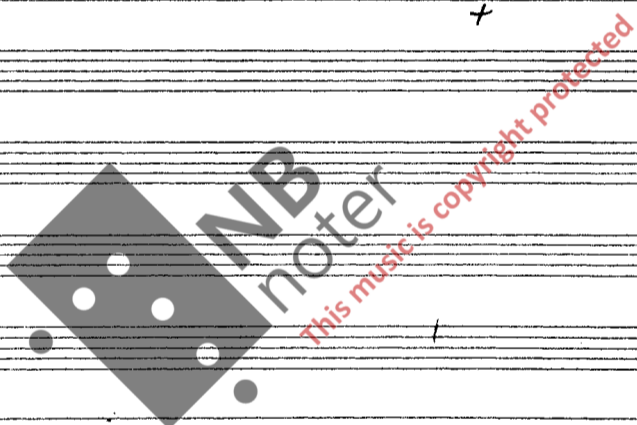
Handwritten musical score for the first system, featuring staves for Flute I (FI), Flute II (FII), Bassoon (Br), Violin (Vc), and Cello/Double Bass (Kb). The notation includes various notes, rests, and dynamic markings such as *sm A*. The score is divided into measures by vertical bar lines.

Empty musical staves for the second system, consisting of five blank staves.

Handwritten musical score for the second system, featuring staves for Flute I (FI), Flute II (FII), Bassoon (Br), Violin (Vc), and Cello/Double Bass (Kb). The notation includes various notes, rests, and dynamic markings such as *sm A* and *fz*. A large watermark for "NB noter" is overlaid on the score, with the text "This music is copyright protected" written diagonally across it.

Handwritten musical score for strings (F I, F II, B, Vc, kb) with various notes and dynamics like *sm x*.

Handwritten musical score for strings. The staves are labeled F I, F II, B, Vc, and kb. The notation includes various notes, rests, and dynamics such as *sm x*. There are also some handwritten markings above the notes, possibly indicating fingerings or articulation.



Andante molto

Handwritten musical score for Soloflöte, F 1, F 2, Solobr., Br, Vc, and Bass with various notes, rests, and dynamics like *pp* and *mf*.

Handwritten musical score for woodwinds and strings. The staves are labeled Soloflöte, F 1, F 2, Solobr., Br, Vc, and Bass. The notation includes various notes, rests, and dynamics such as *pp* and *mf*. There are also some handwritten markings above the notes, possibly indicating fingerings or articulation.

Tutti arco

Solo Violin
F 1
F 2
Solo Violon
Riob
Solo Cello
Cello
Bass

F 1
2
Solo Violon
Riob
Solo Cello
Cello
Bass

F 1
2
Solo Violon
Riob
Solo Cello
Vc
Bass

Tutti

Handwritten musical score for the first system, featuring five staves: Flute 1 (F1), Flute 2 (2), Bassoon (Ba), Violin (Vc), and Cello (Vcl). The Flute 1 part is highly active with many trills and slurs. The Bassoon part includes the instruction "div". The Violin and Cello parts have fewer notes, with some slurs. A large handwritten flourish is present on the right side of the system.

Handwritten musical score for the second system, featuring five staves: Flute 1 (F1), Flute 2 (2), Bassoon (Ba), Violin (Vc), and Cello (Vcl). The Flute 1 part continues with trills. The Bassoon part has "div" written above it. The Violin and Cello parts have more notes. The Cello part includes the instruction "Tutti".

Handwritten musical score for the third system, featuring five staves: Flute 1 (F1), Flute 2 (2), Bassoon (Ba), Violin (Vc), and Cello (Vcl). The Flute 1 part has a large slur. The Bassoon part has "div" written above it. The Violin and Cello parts have more notes. The Cello part includes the instruction "Tutti".

Handwritten musical score for the fourth system, featuring five staves: Flute 1 (F1), Flute 2 (2), Bassoon (Ba), Violin (Vc), and Cello (Vcl). The Flute 1 part has "div" written above it. The Bassoon part has "div" written above it. The Violin and Cello parts have fewer notes. The Cello part includes the instruction "Tutti".

Handwritten musical score for five staves. The staves are labeled on the left as F1, 2, Rn, Vc, and Wb. The notation includes notes, rests, and dynamic markings such as *div* and *f*. The score is divided into two measures by a vertical bar line.

