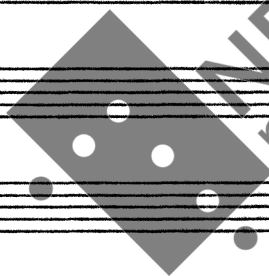


Kulpaan kiirelt

Aftra stemning

(Pinnosen oppi buret)



noter

This music is copyright protected

G. B.

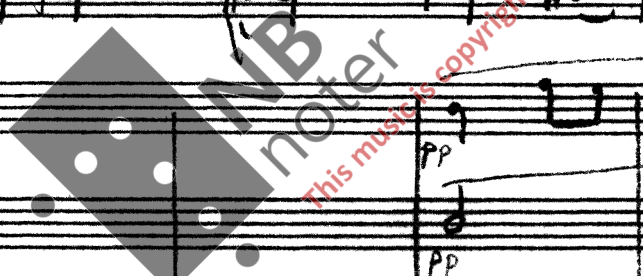
april 60

to

7

Handwritten musical score for the first system, consisting of ten staves. The notation includes various note values, rests, and dynamic markings such as *mf* and *p*. A double bar line is present in the middle of the system. The music is written in a cursive, handwritten style.

Handwritten musical score for the second system, consisting of ten staves. The notation continues from the first system, featuring notes, rests, and dynamic markings such as *pp*. A double bar line is present at the end of the system. The music is written in a cursive, handwritten style.



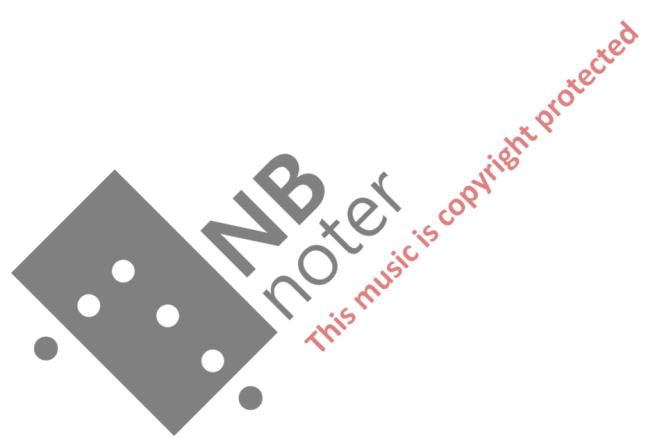
2

Handwritten musical score for the first system, measures 1-4. The staves are labeled Fl, Ob, Kl 1, Kl 2, Fg, Fc, Tr, Vc, and Kb. The music features various dynamics including *mf* and *pp*. The Flute part has a melodic line with some grace notes and slurs. The woodwinds and strings provide harmonic support with sustained notes and some rhythmic patterns.

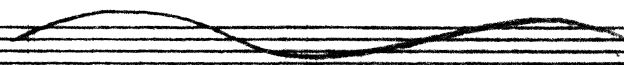
Handwritten musical score for the second system, measures 5-8. The staves are labeled Fl, Ob, Kl 1, Kl 2, Tr, Ba, Vc, and Kb. This system includes a double bar line and a key signature change to two flats. Dynamics include *pp* and *ppp*. The Flute part continues with a melodic line, while the strings play sustained chords. A large watermark is visible across the center of the page.

3 Vers

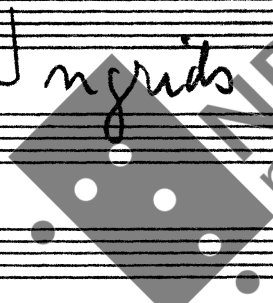
Extraspill



Halpman Kierulf



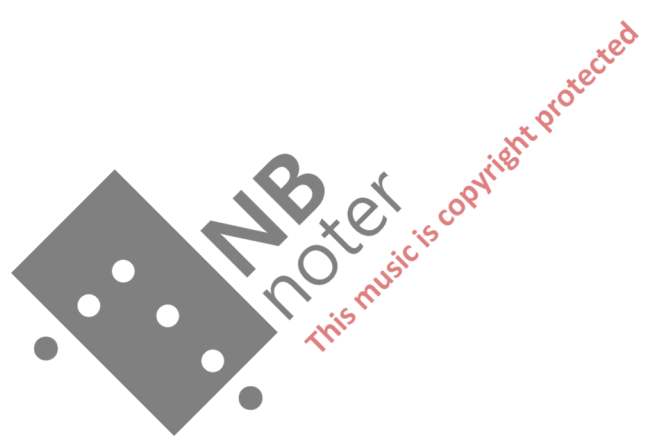
Ingrid's rise



This music is copyright protected

Sr B

April 60



Allegro moderato

7

Handwritten musical score for the first system, measures 1-4. The staves are labeled Fl, Ob, Cl 1, Cl 2, Fc, F1, F2, Br, Vc, and Kb. The music features complex rhythmic patterns with many beamed notes and slurs. Dynamic markings include *f*, *pp*, and *ppizz*. A large watermark is visible across the middle of the page.

Handwritten musical score for the second system, measures 5-8. The staves are labeled Fl, Ob, Vl 1, Vl 2, Fc, F1, F2, Br, Vc, and Kb. The music continues with complex rhythmic patterns and slurs. Dynamic markings include *f*, *pp*, *ppizz*, and *acc*. A large watermark is visible across the middle of the page.





Handwritten musical score for a woodwind ensemble. The staves are labeled on the left as follows: Fl (Flute), Ob (Oboe), Kl<sup>1</sup> (Clarinet 1), Kl<sup>2</sup> (Clarinet 2), Fc (Bassoon), Ba (Baritone), Vc (Violin), and W (Cello/Double Bass). The score is divided into two measures by a double bar line. The first measure contains musical notation for all instruments, including notes, rests, and dynamic markings. The second measure contains a large handwritten '3' and some scribbled-out notation on the Kl<sup>2</sup> staff. A watermark for 'NB noter' is visible in the lower right quadrant of the page.

