

CONCERTINO

for
gitar og fem instrumenter

Olav Berg
1979

Lento ♩ = 60

flauto
piccolo

clarinetto
in Sib

piano

guitar
solo

violino

violoncello



Musical score for Concertino, featuring staves for flauto piccolo, clarinetto in Sib, piano, guitar solo, violino, and violoncello. The score includes musical notation, dynamics (mp), and performance markings (accents, slurs, and fingerings).

gt. solo

5

mp

vl.

pp mp

10'

3 4

4 3 4

b. solo

mf f5 ff

vl.

mf

15'

2 4 mp 3 4

4 4 4 4

t. solo

mp

vl.

mp

gt. solo

tenuto (ad lib.)

vl.

gt. solo

piu mosso 76-80

p.no

gt. solo

f *mp*

3 7 3 7 3 7 3 7 3 7 3 7 3 7 3 7

vl.

p

vc.

p

Handwritten musical score for piano (p.no), solo, violin (vl.), and viola (vc.). The score is divided into two systems. The first system includes a tempo marking of $\text{♩} = 75$. The piano part features a complex rhythmic pattern with triplets and sixteenth notes. The solo part has a melodic line with triplets and slurs. The violin and viola parts are mostly rests with some initial notes. The second system continues the piano and solo parts with more complex rhythmic and melodic figures. The viola part includes a 'pizz' (pizzicato) marking and a 'p' (piano) dynamic marking. A large watermark for 'NB noter' is overlaid on the score, with the text 'this music is copyright protected' written diagonally across it.

30

p.no

gt. solo

vc.

fl.

cl.

p.no

ped. *mf*

f

mp *ff*

ff 3

This image shows a page of handwritten musical notation, page 5, measures 30-33. The score is arranged in systems. The first system contains the piano (p.no) and guitar solo (gt. solo) parts. The piano part has a treble and bass clef, with a pedal point (ped.) in the right hand and a melodic line in the left hand. The guitar solo is a fast, technical piece. The second system contains the violin (vc.) part. The third system contains the flute (fl.) and clarinet (cl.) parts. The flute part has a treble clef and a key signature of one flat. The clarinet part has a treble clef and a key signature of one sharp. The piano part in the third system has a treble and bass clef. The score includes various musical notations such as notes, rests, slurs, and dynamic markings like *mp*, *ff*, and *mf*. A large watermark 'NB noter' is visible across the middle of the page.

35

fl. *tr. b* *muta in piccolo*

cl. *tr. b*

no *con ped.* *ped.*

vl. *arco ff*

vc. *ff*

picc. *ff*

cl. *ff*

no

vl. *b*

vc. *b*

The musical score on page 7 includes the following parts:

- picc.** (Piccolo): Single melodic line with slurs and triplets.
- cl.** (Clarinet): Single melodic line with slurs and triplets.
- p.no** (Piano): Two staves (treble and bass clef) with complex chordal textures, slurs, and triplets.
- vl.** (Violin): Single melodic line with slurs and triplets.
- vc.** (Violoncello): Single melodic line with slurs and triplets.

The score features various musical notations including slurs, triplets, and dynamic markings. A watermark for 'IB noter' is visible across the piano part, with the text 'This music's copyright protected' written diagonally.

45

picc.

cl.

tra.

no.

ped.

vl.

vc.

picc.

cl.

no.

lc.

mf

mf

p

pp

dim.

dim.

loco

quasi

dim.

dim.

Rit.

p

ped.

p

pp

THIS MUSIC IS COPYRIGHT PROTECTED

MB notes

50' = 60

muta in fl. gr.

picc.

cl.

p.no

gt. solo

vc.

pp

pp

pp

mp

poco f

pp

55

fl.

cl.

gt. solo

p

mp

fl. cl. solo

40

f

3

fl. cl. solo

60

p dolce

p dolce

mp

3

f

fl. cl. gt. solo

65

mp

Tranquillo ♩ = 56 ⁷⁰

fl.

cl.

gt. solo

||

p.no

p

ped.

pp

75

♩ = 66

gt. solo

ARM 8

espress.

pp — mp

espress.

pp — mp

80

no

vl.

vc.

85

fl.

cl.

no

vl.

vc.

ped. con sord.

pp

mf

fl.

cl.

p.no

vc.

p.no

vl.

vc.



Musical score for flute (fl.), clarinet (cl.), piano (p.no), and violin/viola (vl./vc.). The score is written on multiple staves. The flute and clarinet parts feature melodic lines with slurs and accents. The piano part includes chordal textures and a section marked 'P ped.'. The violin and viola parts provide harmonic support with sustained notes and some melodic movement. A double bar line is present in the lower section of the page, and the number '90' is written above the piano staff in that section.

95

400

fl. mp

cl. mp pp

pno. (senza sord.) mp

qt. solo f

vl. pizz.

vc. pizz.

This music is copyright protected

NB noter

Detailed description: This page of a musical score contains six staves. The first two staves are for Flute (fl.) and Clarinet (cl.), both in 4/4 time. The flute part starts with a dynamic of *mp* and features a melodic line with slurs and accents. The clarinet part also starts with *mp* and has a similar melodic line. The piano (pno.) part is in 4/4 time and includes the instruction "(senza sord.)" and a dynamic of *mp*. The guitar solo (qt. solo) part is in 4/4 time and begins with a dynamic of *f*. The violin (vl.) and viola (vc.) parts are in 4/4 time and feature a rhythmic accompaniment with slurs and accents. The violin part includes the instruction "pizz." and the viola part includes "pizz.". The page number "95" is written in the top left corner, and "400" is written in the top right corner. A large watermark "NB noter" is overlaid on the center of the page, with the text "This music is copyright protected" written in red below it.

105

fl.

cl.

gt. solo

vl.

vc.

fl.

cl.

gt. solo

vc.

mp

mp

pizz.

mp



fl. *115*

cl.

t. solo

vl. *pizz.*
mp

vc. *pizz.*
mp

120

no.

solo

vl.

vc.

125

130

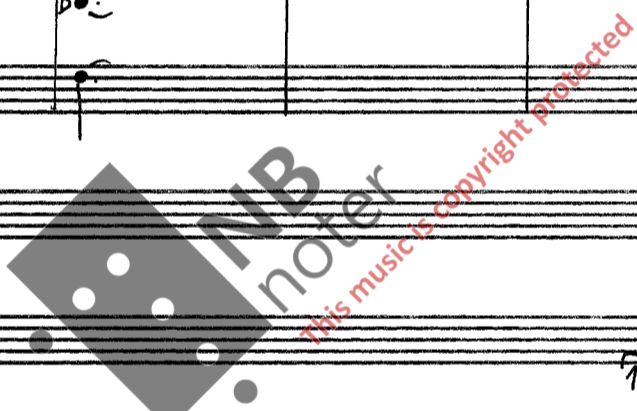
cl.

p.no

gt. solo

vl.

vc.



135

fl.

cl.

p.no

gt. solo

mf

Musical score for page 18, measures 140-145. The score is arranged in systems for various instruments: fl., cl., no., solo, p.no., jt. solo, vl., and vc. The tempo is marked 140. A watermark for 'NB noter' is present across the score, with the text 'this music is copyright protected' written diagonally. The score includes various musical notations such as notes, rests, and dynamic markings like 'p' and 'pizz'.

This page contains a handwritten musical score for a chamber ensemble, spanning measures 150 to 160. The score is written on ten staves, grouped into two systems of five staves each. The instruments are labeled on the left as fl. (flute), cb. (clarinet), gt. solo (guitar solo), vl. (violin), and vc. (viola). The music is in 4/4 time and features a variety of dynamics and articulations. In measure 150, the flute and clarinet play a melodic line with slurs, while the guitar solo part has a series of chords. The violin and viola parts are more rhythmic. Measure 155 includes a 'rasgueado' section for the guitar solo, marked 'mf', and 'arco' markings for the strings. Measure 160 shows a change in dynamics to 'p' (piano) for the woodwinds and 'mp' (mezzo-piano) for the strings. The score includes various musical notations such as slurs, accents, and dynamic markings like 'f', 'mf', and 'p'. A large watermark 'NB noter' is visible across the center of the page, with the text 'this music is copyright protected' written diagonally below it.

fl. muta in piccolo

165

cl.

g.ho mf

gt. solo ff

vl.

vc.

170

g.ho

vl. arco mf

vc. arco mf

175

p.no

vl.

vc.

180

p.no

vl.

vc.

185

p.no

cresc. - - - - - f

vl.

vc.

190

Handwritten musical notation for measures 190-194. The system includes a treble clef (C1) and a bass clef (C2). The music features eighth and sixteenth notes with various accidentals (sharps, naturals, flats). A dynamic marking of *f* (forte) is present. A watermark for 'NB noter' is visible across the page.

Handwritten musical notation for measures 195-199. The system includes a treble clef (C1) and a bass clef (C2). The music features chords and eighth notes. A watermark for 'NB noter' is visible across the page.

Handwritten musical notation for measures 200-204. The system includes a treble clef (C1) and a bass clef (C2). The music features eighth notes and chords. A dynamic marking of *f* (forte) is present. A watermark for 'NB noter' is visible across the page.

Handwritten musical notation for measures 205-209. The system includes a treble clef (C1) and a bass clef (C2). The music features eighth notes and chords. A dynamic marking of *f* (forte) is present. A watermark for 'NB noter' is visible across the page.

Handwritten musical notation for measures 210-214. The system includes a treble clef (C1) and a bass clef (C2). The music features chords and eighth notes. A watermark for 'NB noter' is visible across the page.

Handwritten musical notation for measures 215-219. The system includes a treble clef (C1) and a bass clef (C2). The music features eighth notes and chords. A dynamic marking of *f* (forte) is present. A watermark for 'NB noter' is visible across the page.

23

205

picc.

cl.

p.no

vl.

vc.

arco

picc.

cl.

p.no

vl.

vc.

tr.b

tr.b

210

This page of a handwritten musical score, numbered 24, features three systems of staves. The first system includes staves for saxophone (sicc. and cl.), piano (no.), and guitar solo (gt. solo). The saxophone parts begin with a wavy line indicating a tremolo effect. The piano part includes a 'ped.' (pedal) marking and a '*' symbol. The guitar solo part features a 'ff' (fortissimo) dynamic marking. The second system shows a double bar line followed by a '2/20' marking, with piano (no.) and guitar solo (gt. solo) staves. The piano part includes a 'P' (piano) dynamic marking. The third system features a guitar solo (gt. solo) staff with a 'mf' (mezzo-forte) dynamic marking. A large, semi-transparent watermark for 'NB noter' is overlaid across the center of the page, with the text 'this music is copyright protected' written diagonally below it.

230

p.no

gt. solo

mf

gt. solo

gt. solo

poco rit.

240

a tempo

f

245

CADENZA

Rapido

ten.

gt. solo

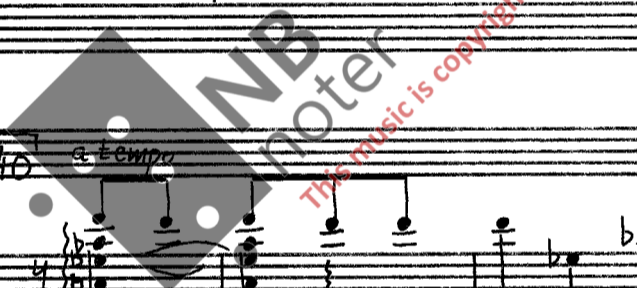
Rubato

gt. solo

mp

accel.

cresc.

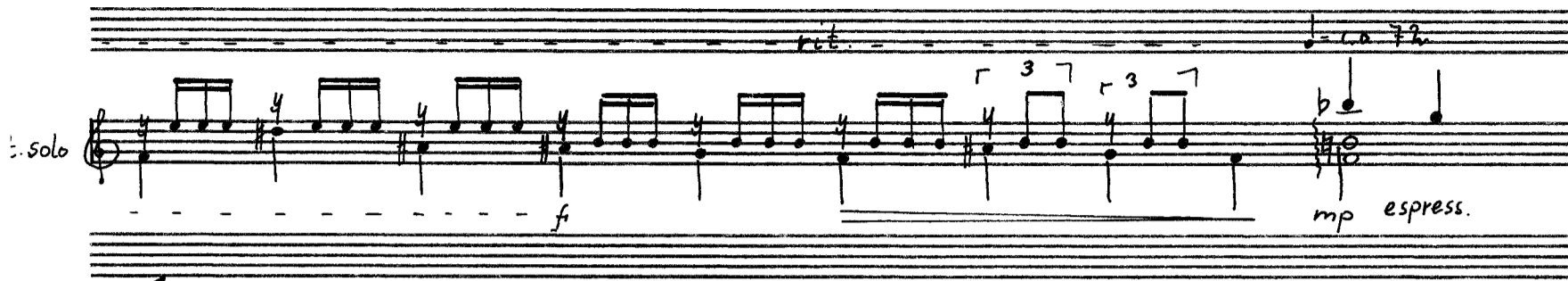


tr. solo

rit. = ca 72

f

mp espress.



t. solo



solo

f

mp

mp

ARM 8



vl.

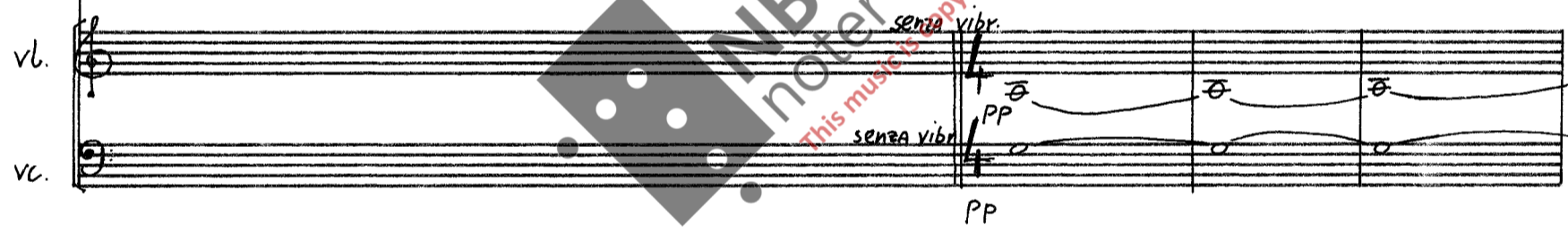
vc.

senza vibr.

senza vibr.

pp

pp

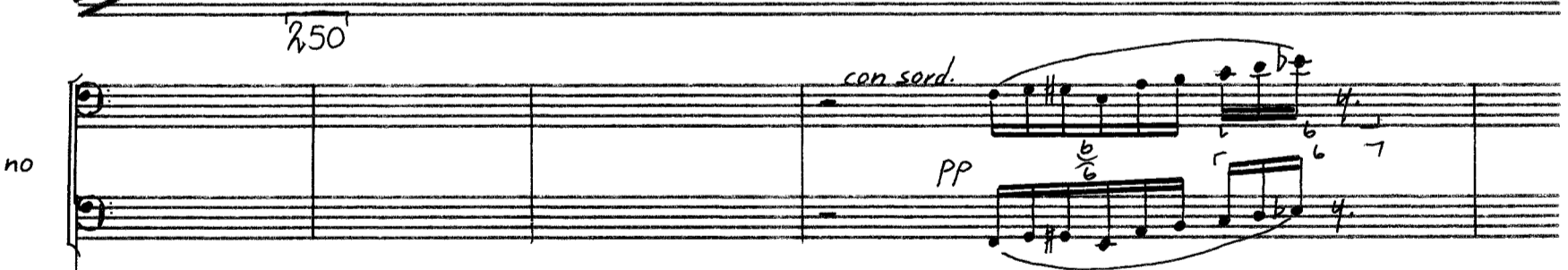


no

250

con sord.

pp



tr. solo

vl.

vc.



This page contains a handwritten musical score for a chamber ensemble. The instruments are arranged in the following order from top to bottom: piano (p.no), guitar solo (gt. solo), violin (vl.), viola (vc.), and clarinet (cl.). The score is divided into two systems. The first system includes piano accompaniment, guitar solo, violin, and viola parts. The piano part features a complex melodic line with many accidentals and a dynamic marking of *f*. The guitar solo part begins with a melodic phrase marked *mf*. The violin and viola parts play sustained chords, with the viola part marked *f*. The second system includes piano accompaniment, guitar solo, and clarinet parts. The piano part continues with a melodic line, marked *mp*. The guitar solo part has a melodic line marked *f*. The clarinet part has a melodic line marked *mp* and includes a trill marked *tr. b*. The score includes various musical notations such as notes, rests, accidentals, and dynamic markings. A large watermark is present in the center of the page.

Handwritten musical score for a symphony orchestra, featuring parts for Piccolo (picc.), Clarinet (cl.), Piano (p.no), Guitar Solo (gt. solo), Violin (vl.), and Viola (vc.).

The score is divided into two systems. The first system includes parts for picc., cl., p.no, and gt. solo. The second system includes parts for picc., cl., p.no, gt. solo, vl., and vc.

Key performance markings and annotations include:

- picc. / cl.:** *mf*, *tr.b*, *265* (with *tr.b* below it), *mf cresc.*, *ff*.
- p.no:** *con ped. mf*, *cresc.*
- gt. solo:** *ff*
- vl. / vc.:** *f*, *ff*

A large watermark "MIDI MOTIV" is overlaid on the score. A vertical line on the right side of the second system is annotated with "of London October 1979 Charles Burg".