

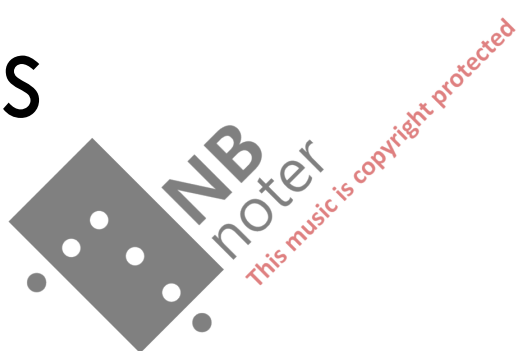
full score

Martin Rane Bauck

Okeanos

for bass clarinet, cello and piano

2023



Duration: ca. 32 min.

Written for Mimitabu with support from Arts Council Norway.

PERFORMANCE NOTES

(Techniques are mostly explained in the score.)

- Always *senza vibrato*
- Contain the energy intensity in all pauses/rests, during the entirety of the piece

Cello scordatura:

The third string is tuned down 31 cents.

The fourth string is tuned down a major third.

Piano harmonics:

- The harmonics are notated in the bottom staff.
- The diamond-shaped noteheads indicate which string/key to play.
- The boxes above each note contain two numbers — x/y — where x indicates the desired partial of the string, and y indicates which node to press down as viewed from the keyboard (alternatively, the reciprocal y/x expresses the position of the desired node as a fraction of the string's length, as viewed from the performer).
- The resulting sounds are notated in the upper staff (with approximate pitch).
- The use of pedal is in general not advised (but may be used in order to join successive harmonics together in a line)

This version of the score has been adapted to a Steinway grand piano model D. If performed on a different grand piano, some adjustments with regard to nodes may be required.

Below is a photo of how the nodes could be marked, with small thread/yarn tied around the strings. (Observe: These are not the nodes specific for this piece.)



For further advice on how to perform piano harmonics, please consult www.pianoharmonics.com.

Verloren ins weite Blau, blick ich oft hinauf an den Aether und hinein ins heilige Meer, und mir ist, als öffnet' ein verwandter Geist mir die Arme, als löste der Schmerz der Einsamkeit sich auf ins Leben der Gottheit

Friedrich Hölderlin, *Hyperion*

Okeanos

for bass clarinet, cello and piano

VERLOREN INS WEITE BLAU...

Martin Rane Bauck

the score is transposed

6/8 $\text{♩} = 52$ 4/8 5/16 4/8

bass clarinet in B \flat

cello

tuning -31 cents

VERLOREN INS WEITE BLAU...

6/8 $\text{♩} = 52$ (sounding) 4/8 5/16 4/8

piano

martellato e legato

mf

8 \flat

7/8 3/8 4/8 7/16 5/8

pno

7/2 5/1 7/2 5/1

8

15 7/16 6/8 4/8 7/16 4/8

pno

5/1 5/1 7/2 7/2

8

22 $\frac{4}{8}$ $\frac{6}{8}$ $\frac{4}{8}$

pno

26 $\frac{4}{8}$

pno

37 $\frac{4}{8}$ $\frac{3}{16}$ $\frac{4}{8}$

bcl

senza misura breathe when necessary

ppppppp (inwardly)
(sounding)

cel

all notes should be long, but varied in length

(scordatura) extr. sul pont. IV III IV III

ppppppp (inwardly)

senza misura $\frac{4}{8}$ ♩ = 52 $\frac{3}{16}$ $\frac{4}{8}$

pno

martellato e legato

$\frac{7}{2}$ $\frac{7}{2}$ $\frac{5}{1}$

8^{va} *mf*

37

pno

(8)

46

pno

(8)

54

pno

(8)

62

pno

(8)

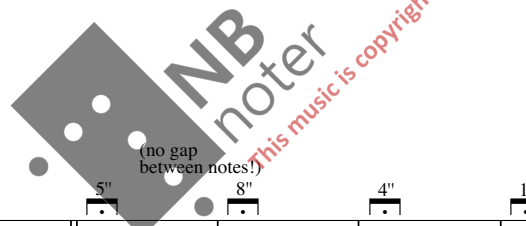
B ...BLICK ICH OFT HINAUF AN DEN AETHER UND HINEIN INS HEILIGE MEER...

bcl
 breathe when necessary
 7-19"
 different fingering sim. sim. sim.
 pppppp (inwardly) ppppp (inwardly, only slightly stronger)

cel
 I II 7-19"
 III
 pppppp (inwardly) ppppp (inwardly, only slightly stronger)

...BLICK ICH OFT HINAUF AN DEN AETHER UND HINEIN INS HEILIGE MEER...

pno
 7-19"
 legato
 5/1 3 7/2 5/1 5 7/2 7/2
 8vb
 ppppp (inwardly)



bcl
 75 3 4 8
 (no gap between notes!)
 5" 8" 4" 11" 7" 10-20"
 unstable intonation and sound production
 mf ppppp (inwardly)

cel
 (no gap between notes!)
 5" 8" 4" 11" 7" 10-20"
 (sounding)
 ppppp (inwardly)
 unstable intonation and sound production

pno
 5/1 5/1
 (no gap between notes!)
 5" (ord.) 8" 4" 11" 7" 10-20"
 ppppp (inwardly)

C (♩ = 52)

83

bcl *pp*

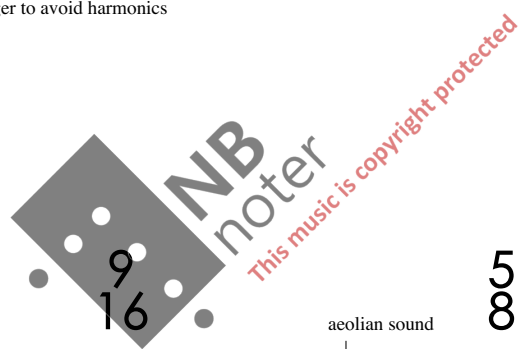
cel *pp*
half-harm. flaut*
III

pno *pp*
(♩ = 52)

8th *pp*

7th 9th 9/16 11/16 9/16

*) half-harmonic flautando:
 - l.h. fingers pressed halfway down
 - no bow pressure - airy, faint pitch, not rich in overtones
 - dampen string with more than one finger to avoid harmonics



90

bcl *pp*

cel *pp*

pno *pp*

aeolian sound

aeolian sound

9/16 4/8 9/16 5/8 4/8 9/16

9/16 11/16 aeolian sound 9/16 4/8 **D** 3x in total sostenuto *ppp*

cel III III IV III III IV *ppp*

9/16 11/16 9/16 4/8 3x in total sostenuto

pno 7/2 5/1 7/2 (8)



101 5" 9" 7" 5" III 9" III 7" 5" 7/2 7/2 8^{vb} 8^{vb}

bcl 5" 9" 7"

cel 5" III 9" III 7"

pno 5" 7/2 9" 7/2 8^{vb} 8^{vb}

E ...UND MIR IST, ALS ÖFFNET' EIN VERWANDTER GEIST MIR DIE ARME...

106

bcl

mf *pp* *ppp*

cel

I II III

flat/dull sound, molto sostenuto

flat/dull sound, molto sostenuto

< *p* *ppp*

...UND MIR IST, ALS ÖFFNET' EIN VERWANDTER GEIST MIR DIE ARME...

pno

f *ppp*

8^{vb}

2/8 4/8 5/8 7/16 3/8 4/8 5/8

bcl

113

ca. 1/8-1/6 lower

cel

IV III

pno

11/3 5/1 7/2 5/1 5/1 7/2

(8)

5/8 3/8 4/8 3/8

121

ca. 1/8-1/6 lower

bcl

cel

pno

4/8 3/8 5/8 4/8

129

bcl

cel

pno

4/8 3/8 7/16 5/8 4/8

F 7x in total sostenuto

5"

5"

5"

5/1 7/2 11/2 5/1

136

2-3"

7/16

molto sostenuto

3/8

4/8

7/16

bcl

cel

pno

7/16

ppppp

molto sostenuto

3/8

4/8

7/16

2-3"

II III

sim.

7/2

8vb

ppp

141

7/16

4/8

7/16

6/8

bcl

cel

pno

7/16

4/8

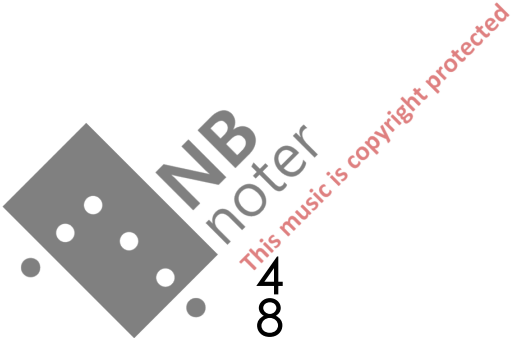
7/16

6/8

3-7"

3-7"

(8)



G ...ALS LÖSTE SICH DER SCHMERZ DER EINSAMKEIT SICH AUF...

145

6/8 (sounding) 4/8 5/16 4/8

cel

scordatura III IV legato

pp <-> *mp* *espressivo*



152

3/8 4/8 7/16 5/8

cel



159

7/16 6/8 4/8 7/16

cel

II III



165

7/16 4/8 6/8 4/8

cel

III IV II III III IV

172

bcl

cel

pno

ppp

5th

H

3/16 4/8

III IV legato

p'pp

3/16 4/8

7/2

8^{vb}

ppp



180

cel

ppp

5th

III IV legato

p'pp



188

cel

II III IV

5/8



196

cel

5/8 4/8 2/8 5/16 4/8

203

4/8 (b3)(b2) 7/16 (b2) 4/8

cel

210

bcl

cel

pno

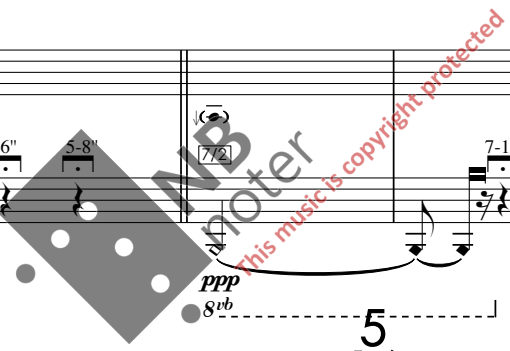
216

4/8 5/16 4/8 3/8

bcl

cel

pno



223 3 4 7 5 7

8 16 8 16

bcl

cel

pno

(8).....

230 7 6 4 7 4

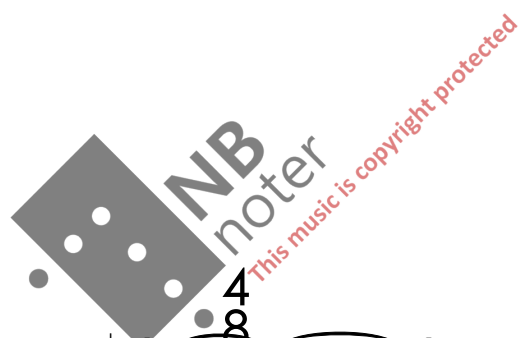
16 8 8 16 8

bcl

cel

pno

(8).....



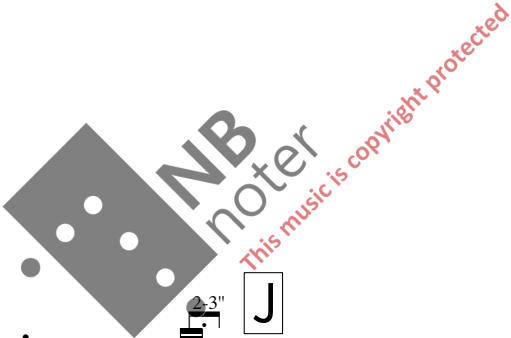
236

bcl

cel

pno

(8)



243

bcl

cel

pno

ppp

pp

ppp

p/pp

mf

martellato e legato

3/16

4/8

3/16

4/8

(8)

8vb

250

bcl

cel

pno

(8).....

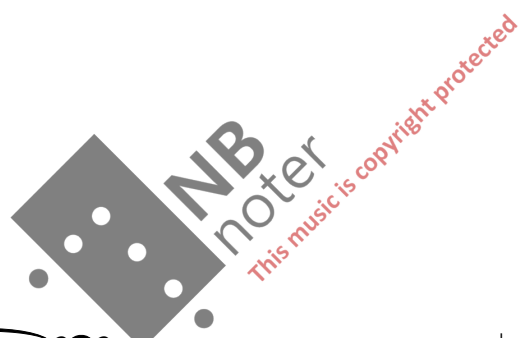
257

bcl

cel

pno

(8).....



264

bcl

cel

pno

(8)

270

bcl

cel

pno

(8)

NB noter
This music is copyright protected

30
4

277

bcl

cel

pno

30
4



283

cel

(sempre scordatura)

sim.

ppppp

rit.

$\text{♩} = 52 / \text{♩} = 26$

30
4

3
8

K

...INS LEBEN DER GOTTHEIT.

284 $\frac{3}{8}$ $\text{♩} = 52$

bcl *pp* 3x 3" 5x 7" 17x 31" fine

cel *pp* 3x 3" 5x 7" 17x 31" fine

...INS LEBEN DER GOTTHEIT.

$\text{♩} = 52$

pno *pp* 3x 7/2 3" 7/2 5x 7" 7/2 17x 31" fine

8^{vb} *pp*

