

RUTH BAKKE

Why

Piano, alto and cello





Words: e.e.cummings

Why

Music: Ruth Bakke

(♩ = c.63) Duration: ca 5:20

Prepared piano

Handwritten musical notation for Prepared piano. It consists of two staves (treble and bass clef). The music features a complex rhythmic structure with time signatures of 3/4, 5/4, and 3/4. The melody is primarily in the treble clef, with some bass clef accompaniment. There are several chords and melodic lines, some marked with a '6' indicating a sixth chord.

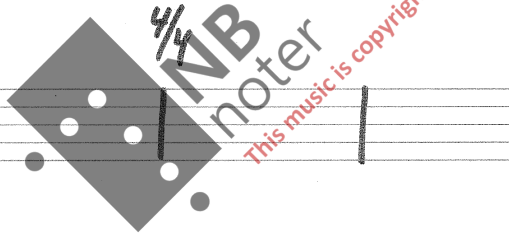
'alto (Voice)

Handwritten musical notation for Alto (Voice). It consists of a single treble clef staff that is currently empty.

'cello

Handwritten musical notation for Cello. It consists of a single bass clef staff that is currently empty.

Handwritten musical notation for Prepared piano. It consists of two staves (treble and bass clef). The music features a complex rhythmic structure with time signatures of 4/4 and 3/4. The melody is primarily in the treble clef, with some bass clef accompaniment. There are several chords and melodic lines, some marked with a '6' indicating a sixth chord.



Handwritten musical notation for Prepared piano. It consists of two staves (treble and bass clef). The music features a complex rhythmic structure with time signatures of 4/4 and 3/4. The melody is primarily in the treble clef, with some bass clef accompaniment. There are several chords and melodic lines, some marked with a '6' indicating a sixth chord.

Handwritten musical notation for Prepared piano. It consists of two staves (treble and bass clef). The music features a complex rhythmic structure with time signatures of 3/4 and 4/4. The melody is primarily in the treble clef, with some bass clef accompaniment. There are several chords and melodic lines, some marked with a '6' indicating a sixth chord. There are also some markings like 'tr' and 's.l.h.'.

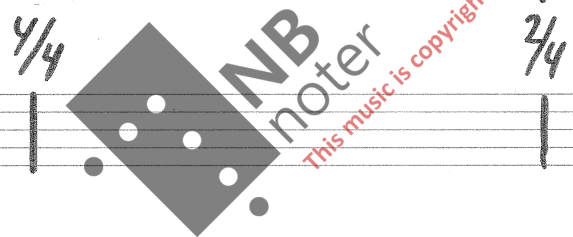
Handwritten musical notation for Prepared piano. It consists of two staves (treble and bass clef). The music features a complex rhythmic structure with time signatures of 3/4 and 4/4. The melody is primarily in the treble clef, with some bass clef accompaniment. There are several chords and melodic lines, some marked with a '6' indicating a sixth chord. There are also some markings like 'mf' and 'b'.

Handwritten musical notation for the first system, featuring a treble clef and a 3/4 time signature. The notation includes various rhythmic values, accidentals, and slurs. A double bar line is present in the second measure.

Empty musical staves for the second system, with a 3/4 time signature indicated on the left.

Handwritten musical notation for the third system, including a bass clef and a 3/4 time signature. It features a 'pizz.' (pizzicato) marking and various rhythmic patterns.

Handwritten musical notation for the fourth system, featuring a treble clef and a 4/4 time signature. It includes a '3' marking and various rhythmic values.



Handwritten musical notation for the fifth system, featuring a bass clef and a 4/4 time signature. It includes various rhythmic values and a '2/4' marking.

Handwritten musical notation for the sixth system, featuring a treble clef and a 4/4 time signature. It includes a 'loco' marking and a 'pp' (pianissimo) dynamic marking. A note in the bass clef is circled with a '2'.

Handwritten musical notation for the seventh system, featuring an alto clef and a 4/4 time signature. It includes lyrics: 'Why don't be sil-'. The notation includes a '3' marking and a 'pp' dynamic marking. A 'f' (forte) marking is present in the bass clef.

NATIONAL

MANUSCRIPT PAPER

Handwritten musical score for the first system. It features a treble clef staff with a key signature of one sharp (F#) and a 4/4 time signature. The bass clef staff contains rhythmic notation with notes marked 'R' and 'b'. A section is enclosed in a dashed box and labeled 'loco'. Above the treble staff, there are markings for '8va.' and '(s)'. The system concludes with a double bar line and a fermata.

Handwritten musical score for the second system. The treble staff contains a melodic line with notes and rests. Below the treble staff, there are markings for 'pizz.' and '(pizz.)'. The bass clef staff contains a bass line with notes and rests. The system includes the lyrics '-ly,' and 'in-deed;'.

Handwritten musical score for the third system. It features a treble clef staff with a key signature of one sharp (F#) and a 4/4 time signature. The bass clef staff contains rhythmic notation with notes marked 'R' and 'b'. A section is enclosed in a dashed box and labeled 'loco'. Above the treble staff, there are markings for '8va.' and '(s)'. The system concludes with a double bar line and a fermata.

Handwritten musical score for the fourth system. The treble staff contains a melodic line with notes and rests. Below the treble staff, there are markings for 'pizz.' and '(pizz.)'. The bass clef staff contains a bass line with notes and rests. The system includes the lyrics 'mo-ney can't do'.

Handwritten musical score for the fifth system. The treble staff contains a melodic line with notes and rests. Below the treble staff, there are markings for 'pizz.' and '(pizz.)'. The bass clef staff contains a bass line with notes and rests. The system includes the lyrics '(ne- ver did & ne- ver will'.

loco

Handwritten musical notation for the first system, featuring a treble clef staff with a key signature of one sharp (F#) and a bass clef staff. The bass staff includes the instruction "16 basso..." and "8 basso... loco" with an arrow pointing to the right. The treble staff contains rhythmic patterns with accents and slurs. A circled "p" with the word "decrease." is written above the final notes of the treble staff.

Handwritten musical notation for the second system. The treble staff includes the lyrics "a-my damn" and "thing" above notes. The bass staff includes the instruction "arco" and "col legno". The treble staff ends with the lyrics "far from it; you're" and "decrease." above notes. Dynamics markings "mp" and "p" are present.

Handwritten musical notation for the third system. The treble staff includes the instruction "8va" and "pp". The bass staff includes the instruction "loco" and "5/4". A large watermark "NB noter" is overlaid on the system, with the text "This music is copyright protected" written diagonally across it.

Handwritten musical notation for the fourth system. The treble staff includes the lyrics "wrong," and "my friend" above notes. The bass staff includes the instruction "pizz." and "mp col legno f arco". A box labeled "harmonics on C" is drawn around a specific chord in the treble staff.

Handwritten musical notation for the fifth system. The treble staff includes the instruction "8va" and "3/4". The bass staff includes the instruction "3/4". The system concludes with a box labeled "8va loco" and "l.h. r.h." below a chord.

Handwritten musical notation for the sixth system. The treble staff includes the instruction "pizz." and "arco". A box labeled "harmonics on G" is drawn around a chord. The bass staff includes the instruction "col legno battuto" and "pizz.".

5.

NATIONAL

MANUSCRIPT PAPER

8va ⁵

loco

6

6

3

8basso ... (R) ...

pizz.

8basso

arco

pizz.

6

6

6

6

4/4

arco

(a)

loco

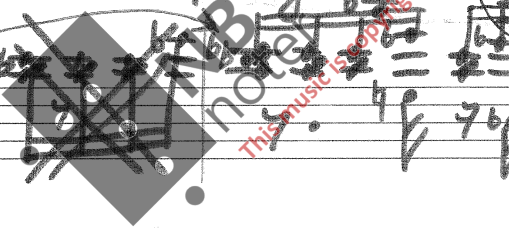
8

6/4

8basso

6/4

6/4



8va

16

8

6

6

5/4

8basso

9 r.h. l.h.

6

R

6

6

6

6

6

6

6

6

6

6

Alto

ah

Alto Cadenza (The singer may improvise a simpler cadenza)

Con moto (d = c. 63) - in a free rhythm.

Handwritten musical notation for the first system, including treble clef, key signature (one sharp), and various rhythmic markings such as *mp*, *a*, and *3*.

Handwritten musical notation for the second system, including treble clef, key signature (one sharp), and various rhythmic markings such as *3* and *5*.

Handwritten musical notation for the third system, including treble clef, key signature (one sharp), and various rhythmic markings such as *3* and *5*.

Handwritten musical notation for the fourth system, including treble clef, key signature (one sharp), and various rhythmic markings such as *3* and *5*.

ned liten ters (hvis man ikke kommer høyt nok)

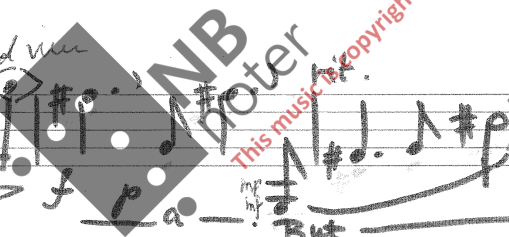
Handwritten musical notation for the fifth system, including treble clef, key signature (one sharp), and various rhythmic markings such as *3* and *a tempo*.

Handwritten musical notation for the sixth system, including bass clef, key signature (one sharp), and various rhythmic markings such as *3* and *a tempo*.

Handwritten musical notation for the seventh system, including treble clef, key signature (one sharp), and various rhythmic markings such as *8va*, *16*, *8*, *2/4*, and *3/4*.

Handwritten musical notation for the eighth system, including treble clef, key signature (one sharp), and various rhythmic markings such as *3* and *what 3*.

Handwritten musical notation for the ninth system, including bass clef, key signature (one sharp), and various rhythmic markings such as *pizz.*, *arco*, and *3*.



portamento opp til ciss.

(find the note she ends on, then slide down to C.)

7

16

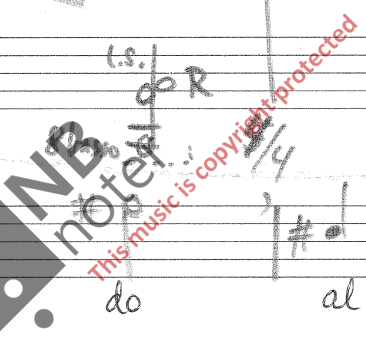
3/4 4/4 2/4 4/4

3/4 3/4 2/4 4/4

does do has al- ways done i &

pizz. arco

8va... loco 8va... loco 8basso... 8basso



(sempre pizz)

will do al- ways some-

loco 8basso

thing is (guess) yes you're

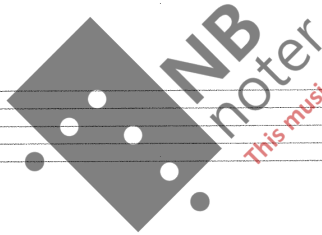
arco pizz.

Handwritten musical score for guitar, featuring a vocal line and a guitar accompaniment. The score includes various musical notations such as treble and bass clefs, time signatures (8/8, 7/8, 3/4), and dynamic markings (p, pp, pizz.).

Lyrics: *right: my ene-my Love*

Performance instructions: *loco*, *poco rit.*, *arco*, *pizz.*, *ped.*

Date: *May 1969*



This music is copyright protected

p = paper clip or loose screw (on string)

S = screw on (in between) strings

R = rubber wedge "

X = normal

Diagram illustrating the placement of various techniques on a guitar fretboard. The diagram shows a series of vertical lines representing strings and frets, with symbols (p, R, S, X) indicating the location of paper clips, rubber wedges, screws, and normal playing positions.

Rex Bakke

