

RUTH BAKKE

Sonata

For orgel





"SONATA"

for orgel

av

Ruth Bakke

Instrument: Orgel*

Hyre: 2 Orgelst + assistent (registrering og klaverlag)

Varighet: ca. 10-15 min. for eller forandring

*Stykket er skrevet for et stort kirkorgel med tre manualer à fem staver (og pedal C-g). Men stykket kan lett tilpasses et orgel med mindre manualer.

SONATA.

Ruth Baker

The vertical axis represents the keyboard.
The horizontal axis only relatively - with much freedom and irregularity - expresses the progress of time.



White keys only ; black keys only.



Chord of both black and white keys.



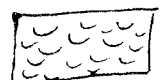
Dense movement - rather legato - within this space.



Each note in staccato movement



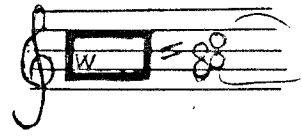
Each note tenuto



Light, fast movement



Short Chords of very short duration
Thickness of line \approx duration of chord.



- f. - finger
- h. - hand
- w. - wrist
- u. - under arm = forearm
- a. - as much of arm and hand as needed to cover the chord.

- l. - left
- r. - right
- A. - toe
- S. - side (outside)
- U. - heel

- Gr. - great
- Ch. - choir
- Sw. - swell
- Ped. - pedal

This music is copyright protected

The notation is only approximate - the organist is free to improvise where it is appropriate. In the freer sections the notation of pitch and rhythm is rather arbitrary. Registration may be changed more often than notated, in order to expose different and unique organ stops and make the sound more colorful.

This music should be no square architecture, nor should it move forward in a rigid beat, but on the contrary lift us above the sense of time. The organist is expected to give a sensitive, musical performance, bringing out the wholeness of the work. Also, he should be responsive to the atmosphere and mood of the audience. The length of any chord or of the whole piece as such depends largely on the quality of the organ and the acoustics (length of reverberations).

SONATA.

I. Moderato

Ruth Bakke

Assistant: add flutes from 8' and up,
 then possible strings
 then principals, finally possible reeds,
 building a crescendo to fortissimo
 of full, but not penetrating, sound.
 (i.e. brilliant stops may be used, but not
 the shrill ones.)

Sw.-Gr.
Ch.-Gr.

Man.

Gr.
Flute (Gedacht) 16'

r. a. B

c. 12-18"

Ped.

x) From the Swell
 if there is no 16' on the Great.

Subtract stops
 leaving Flutes 16' 8' 4'
 on Gr. only.
 - (Sw.-Gr., Ch.-Gr.)

Prepare Sw.: Flute 8', Principals 4' 2', Mixture, Oboe 8'
 (or another clear registration).

ff

lonika

16' Fagott
 Mixture
 Flutes 16' 8' 4' 2' (no principals but the mixture).

Rh: Sw.

Handwritten musical score for the first system. It consists of a grand staff with treble and bass clefs. A large area of the staff is filled with diagonal hatching. A bracket below the staff spans from the start of the hatching to the end of a section, with the text "(around 15-18 seconds)" written underneath. To the right of the hatching, there is a note with the text "(l.a. sliding up)". Above the staff, there are some faint markings including "r.e." and "w".

Handwritten musical score for the second system. It consists of a grand staff with treble and bass clefs. There are some notes and rests in the upper part of the staff, with the letters "W", "S", "A", "U" written above them. A large hatched area is present in the lower part of the staff. A small "f" and a "2" are also visible.

Handwritten musical score for the third system. It consists of a grand staff with treble and bass clefs. There are several hatched areas and notes. A large watermark "NB noter" is overlaid on the score, with the text "This music is copyright protected" written diagonally across it. To the right of the staff, there is a note with the text "(Sw.)". Above the staff, there are some markings including "Gr: -16' ft. (8.4' only)" and "Gr: Flute 8' only".

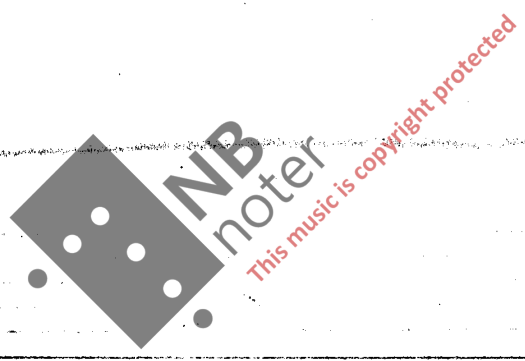
Handwritten musical score for the fourth system. It consists of a grand staff with treble and bass clefs. There are several hatched areas and notes. Below the staff, there are dynamic markings: "(ff, f, mf, ff-)".

Both hands
on Gr.
playfully, light

(Sw.)

- reeds
& mixtures.

Flutes
16', 8', 4', 2'
only.



(9)

-16' -8' -4' (2' only)

(right heel) \hat{b} (ab sempre)

Presto

Ch. (8', 4', 2 1/2', 2')

(tr) (contin to tr. on Sw.)

f

cresc.
(add stops)

Sw (4' and up, contrasting color)

(#)

(e# + f#)

(left foot)

Gr. (8' - up, shnd)

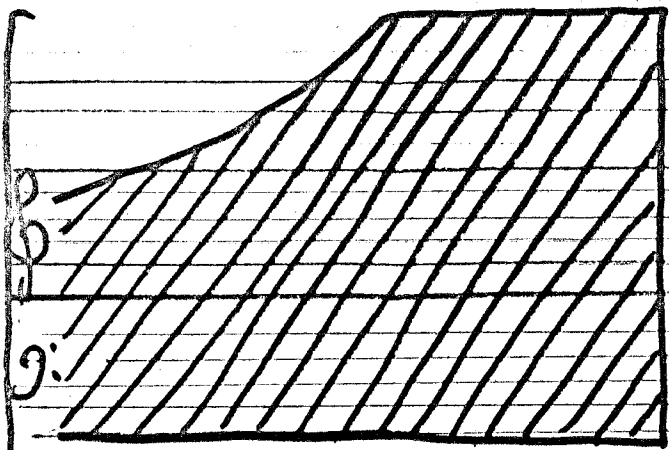
f

Wish.

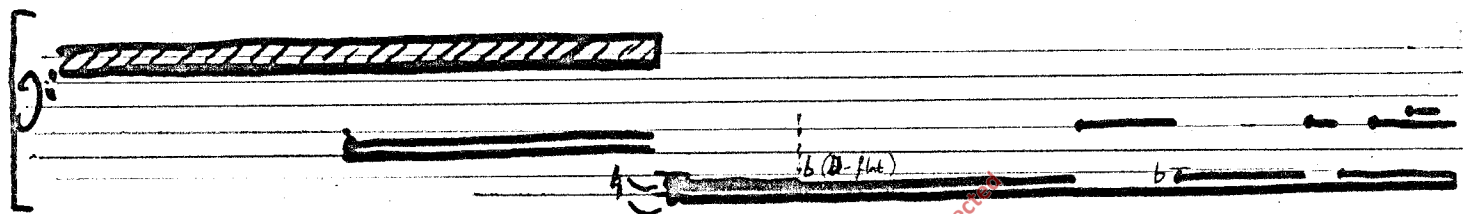
All pedal stops below 8', except the principals

Flutes 16', 8', 4'
Fagotto 16'

II. Andante

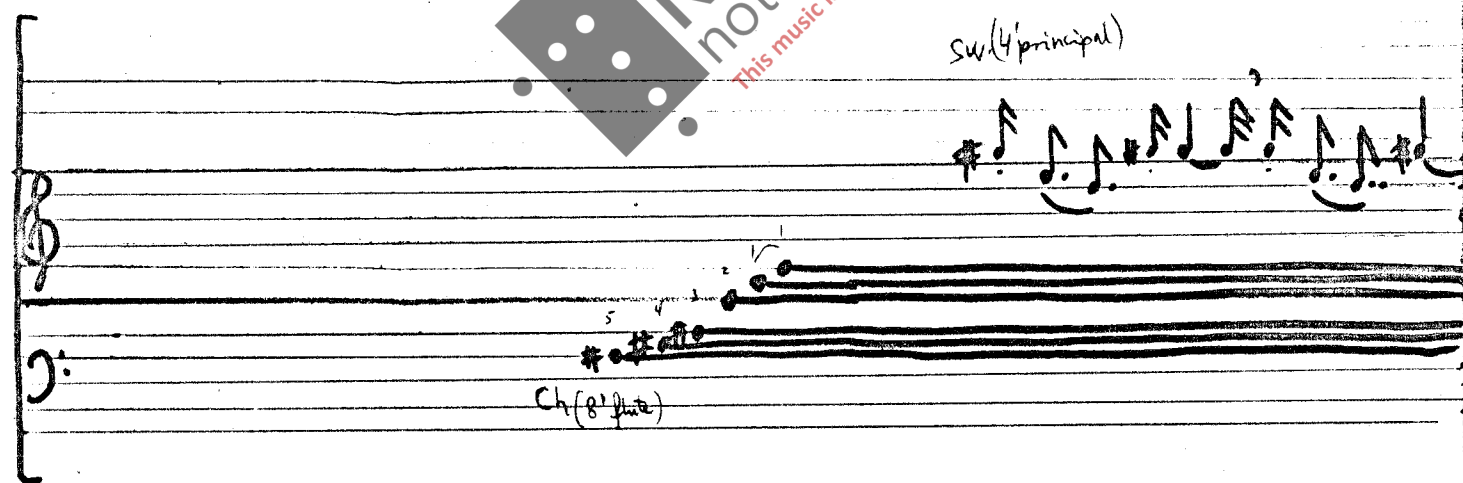


Cresc. to a penetrating sound



16' flute only

Lento
sw (4' principal)



Ch (8' flute)

(B4, c, d, f, a, g, a, a#)

(b)
(Db + C)

Roll from black to white keys and back. At some place on the keyboard black and white keys are played simultaneously

Ch.

Red: 4' flute

12

8' Voix celeste
Sustained (or mp)

r.h.

8' GTR. flute 8'

8' solo stop (from a manual?)
mp

legato

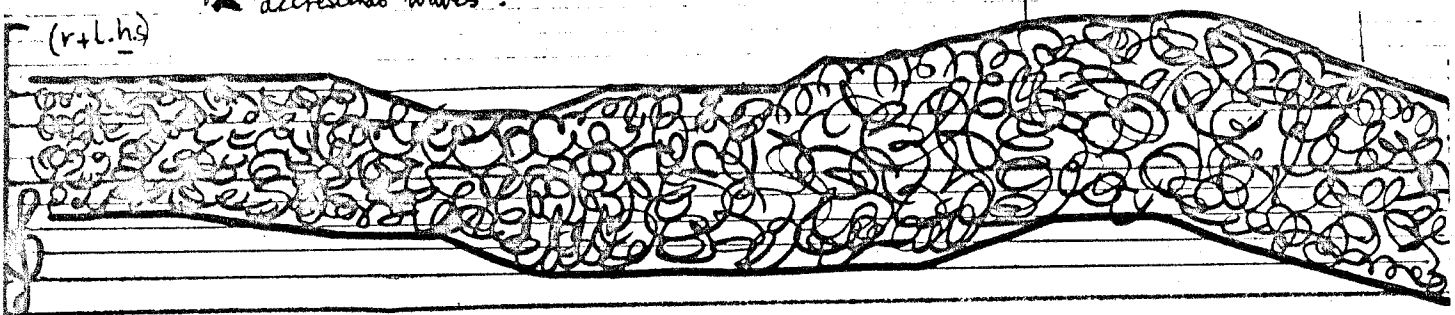
(extremely slow)

Use the swell pedal,
making longer and shorter crescendo-
"decrecendo" waves.

- Voix celeste
+ 8' Salicional
(or other stop)
(no break when changing)

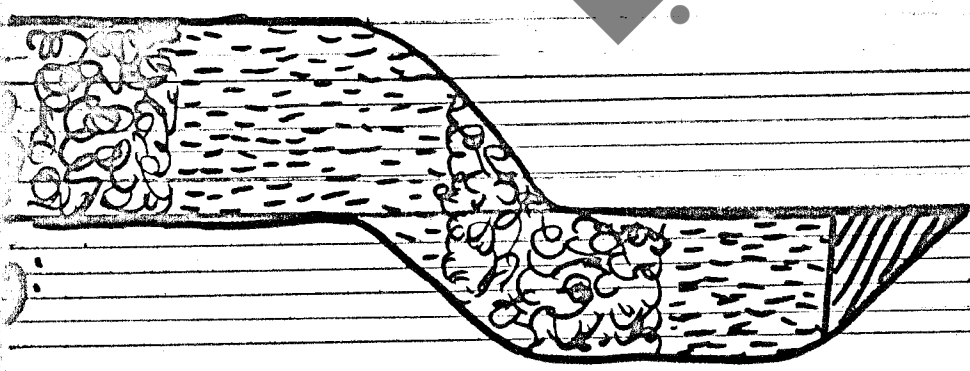
Voix celeste

(r+l. hs)



(D, E)

(c. 50-60 sec.)



r. h.
Sw.
16' Dulcian
or Bassoon

Gr. 16' flute

(l. h.)

B	W
4	4

(bD, C)

Allegretto - allegro

Handwritten musical score for page 15. It consists of two staves. The upper staff is in treble clef and contains a melodic line with various note values and accidentals. The lower staff is in bass clef and contains a wavy line, with the letter '(w)' written below it. The tempo marking 'Allegretto - allegro' is written above the staves.

(no ped.)

III Allegro jubilante

Ch - bright stops + mutations (piano)

Handwritten musical score for page 16. It features two staves. The upper staff contains several measures of music, including some notes with stems pointing downwards. The lower staff has a wavy line followed by a large, dense scribble of lines. To the right of the staves, there are several hand-drawn diagrams of musical instruments, including what appears to be a clarinet and a saxophone. A large watermark 'NB Noter' is visible across the center of the page.

Flute b, 8'

Handwritten musical score for page 16, showing a single staff with a series of notes. Below the staff, there is a bracket spanning several notes, with the text '(C and D_b or D₄)' written underneath it.

(c. 7-9 sec.)

+ Cymbelstein

³e+f

Sw (Contrasting color)

NB noter
 This music is copyright protected

Gr. 8' Trumpet:

Ch.

19

Gr.

(ch.)

20

- cymbelstern

(Principals 8/4, 2 Mixtures, 4 trumpet
optional: Sw-Gr, Ch-Gr.)

Sw.

Gr.

Gr.

r.a.

Sw.

b.a.

w

(Gb or GA)

ff

Handwritten musical notation on a grand staff. The notation includes several large, shaded, curved shapes that resemble musical notes or envelopes. Labels include "r.a." at the top, "(Gr)" in the first measure, "r+la" above a series of vertical bars, and "l.a" below a note. On the right side, there are smaller rectangular shapes with labels "Ch" and "(Sw-Ch)".

Handwritten musical notation on a grand staff. It features a few notes on the upper staff and several rectangular symbols with diagonal hatching on the lower staff.

(c. 11-15 sec.)

Handwritten musical notation on a grand staff. It features several large, shaded, curved shapes with dots, resembling musical notes or envelopes. Labels include "(ch)" at the top left, "r.h" and "Ch" above the first two shapes, "Gr." and "L.h" above a central shape, and "Sw." and "rh." below the first two shapes. There are also several vertical bars and rectangular symbols with diagonal hatching.

Handwritten musical notation on a grand staff using standard musical notation. It includes notes, rests, and dynamic markings like "p" and "f". Labels include "(cod)" above a note. There are some scribbles at the bottom left.

(c. 11-12 sec.)

(Ch.)

Gr. (Gr.) (Gr. r.h.) Ch. Sw. B l.a.

fff

(Maestoso)

(c. 12 - 17 sec.)

(Gr.)

r.h.

Gr. l.a. r.h.

Gr. (a brilliant tutti)

(Fine.)

Jan.-Feb.
1970