

Durata: ca. 5' 30"

IMPROMPTU

$\text{♩} = \text{ca. } 72$

Av Juar Antonsen 188

Piano

mf

Handwritten musical notation for the first system. The treble staff contains a series of eighth-note triplets with various accidentals (sharps, flats, naturals). The bass staff features chords and single notes, some with triplets, and includes a large slur over a section of notes.

Handwritten musical notation for the second system. It features a large slur spanning across both staves. The treble staff has notes with accidentals, and the bass staff has chords and triplets. A watermark is visible in the center: "NB! note! this music is copyright protected".

Handwritten musical notation for the third system. The treble staff shows eighth-note triplets with various accidentals. The bass staff contains chords and single notes, some with triplets, and includes a large slur over a section of notes.

Handwritten musical notation for the fourth system. The treble staff has notes with accidentals and a large slur. The bass staff features chords and triplets, ending with a double bar line and repeat signs. The system is enclosed in a box with a 3/4 time signature in the bottom right corner.

$\text{♩} = \text{ca. } 40$

pp molto legato

mf marcato

pp

tr.

Handwritten musical score system 1. It consists of three staves. The top staff has a treble clef and a key signature of one flat (Bb). The middle and bottom staves have a bass clef and a key signature of one flat (Bb). The music features various notes, rests, and dynamic markings such as *mf*. A wavy line with 'tr.' and a fermata is written above the top staff in the final measure.

Handwritten musical score system 2. It consists of three staves. The top staff has a treble clef and a key signature of one flat (Bb). The middle and bottom staves have a bass clef and a key signature of one flat (Bb). The music includes a wavy line with 'tr.' and a fermata above the top staff. A large watermark 'NB noter' is overlaid on the system, with the text 'this music is copyright protected' written diagonally across it. The bottom staff contains a long melodic line with a slur and a fingering '5'.

Handwritten musical score system 3. It consists of three staves. The top staff has a treble clef and a key signature of one flat (Bb). The middle and bottom staves have a bass clef and a key signature of one flat (Bb). The music includes a wavy line with 'tr.' and a fermata above the top staff. The bottom staff contains two long melodic lines, each with a slur and a fingering '5'.

$P = ca. 72$

Handwritten musical notation for the first system, featuring a treble clef and a piano (*mf*) dynamic marking. The notation includes a melodic line with slurs and a bass line with chords. A watermark for "NB noter" is visible in the center.

Handwritten musical notation for the second system, continuing the piece with a treble clef. The notation includes a melodic line with slurs and a bass line with chords. A watermark for "NB noter" is visible in the center.

Handwritten musical notation for the third system, featuring a treble clef. The notation includes a melodic line with slurs and a bass line with chords. A watermark for "NB noter" is visible in the center.

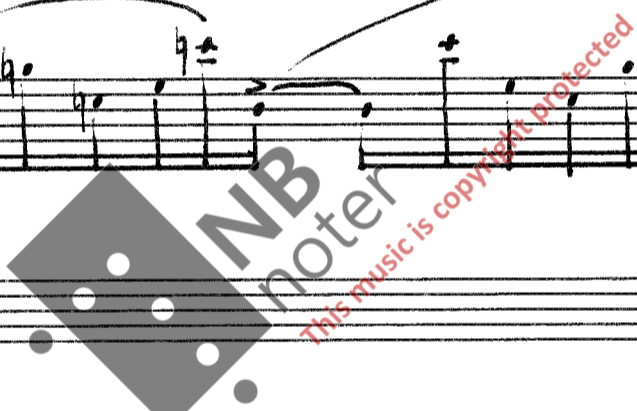
Handwritten musical notation for the fourth system, featuring a treble clef. The notation includes a melodic line with slurs and a bass line with chords. A watermark for "NB noter" is visible in the center.

Handwritten musical notation for the first system. The top staff is in treble clef and contains several chords, some with accidentals (sharps and naturals). The bottom staff is in bass clef and contains a melodic line with eighth and quarter notes, some with slurs and accents.

Handwritten musical notation for the second system. The top staff is in treble clef and contains several chords, some with accidentals (sharps and naturals). The bottom staff is in bass clef and contains a melodic line with eighth and quarter notes, some with slurs and accents.

Handwritten musical notation for the third system. The top staff is in treble clef and contains several chords, some with accidentals (sharps and naturals). The bottom staff is in bass clef and contains a melodic line with eighth and quarter notes, some with slurs and accents.

Handwritten musical notation for the fourth system. The top staff is in treble clef and contains several chords, some with accidentals (sharps and naturals). The bottom staff is in bass clef and contains a melodic line with eighth and quarter notes, some with slurs and accents.



Handwritten musical notation on a grand staff. The top staff contains a treble clef, a key signature of one sharp (F#), and a 3/4 time signature. The music consists of four measures of chords and melodic lines. The bottom staff contains a bass clef and four measures of guitar tablature with fret numbers and plus signs indicating natural harmonics. Above the first two measures of the bass staff, there are handwritten notes: "b = b = + >" and "b = b = + >".

Handwritten musical notation on a grand staff. The top staff contains a treble clef, a key signature of one sharp (F#), and a 3/4 time signature. The music consists of four measures of chords and melodic lines. The bottom staff contains a bass clef and four measures of guitar tablature with fret numbers and plus signs indicating natural harmonics. Above the first two measures of the bass staff, there are handwritten notes: "b = b = + >" and "b = b = + >".

