

Arnt Håkon Ånesen
(2008)

"The soup is cold!
The chicken is running!"

- A tasty mini cabaret -

for Soprano, Mezzo-soprano (with 2 spoons each - hammering at the edge of a pianoforte),
and Pianoforte. (The spoons should be made of wood, or steel if you dare..)

Commissioned by Ensemble Fanfaronner with support from
Arts Council Norway

Duration: 8 minutes



Sing without pitch

s



Sing with pitch

z

This piece is meant to be performed with parody. It is a piece about nonsense, the surrealistic and the meaningless. It should not in any case be performed in a way, which would make the audience believe it is a piece about the serious.

An Ebow (brand name for "Electronic Bow" or Energy Bow) is a battery-powered electronic device originally for playing the electric guitar, invented by Greg Heet in 1969. Instead of having the strings hit by the fingers or a pick, they are moved by the electromagnetic field created by the device, producing a sound reminiscent of using a bow on the strings.

When used at pianoforte the key must be pressed down, in order to make the ebow work. Using small heavy weights on the keys where the ebow is placed should solve this.

The soup is cold! The chicken is running!

Arnt Håkon Ånesen (2008)

Soup, soup, soup, soup.
Chicken soup is running, soup.
Chicken soup soup loop!
Is running, loop,
Is cold.
Chicken soup.

Soup!
Ch-chicken soup.
Soup is cold.
Frozen chicken bones.
Cold and skinny.
Froze.
Barons of chicken soup dandy bones.
Lounge sounds, right?
Tones.

Oh, the chicken was running fast from frozen.
From frozen chicks.
And laughed as he turned the spoon 'round.

Then he turned the other cheek, and puzzled by his sounds,
With bones rasping everywhere through the soup.

He pleased himself from every single response, and looked for fun.
Somewhere around the midst of his tongue.
And guess, the next morning, he was found in a heartbreaking sort of
frozen cold-blooded chicken soup.

Soupy doup.

Cold, bloody soup.

Freeze.
Tease.
Tease your own taste, while sipping cold soupy loop.

Awhile later he went on,
Lost from every kind of boil.
Where's my spoon?
Spoon.

Soon he's gone, where's the chick? Boiling the chick is.
Is chick, the boiling chick. Chick the boiling chick.

He's gone. So long!
Sprung. Done. Away from the spoon, done boiling.
Ain't it gravely weird?
Ha!

Lusty bones are so easy to find.
Small tasty smiles.
Lusty bones are easy to find, boiling smiles.
Soup.

I am the cold chicken male.
Afraid, afraid like you,
And will this taste always bitter be,
Or will it for ever hang over my shoulder,
Hanging over my..

Soup is cold, the chicken is running.
Soup is cold, the chicken is running.
Soup is cold, the chicken is running.
Soup is cold, the chicken is running.
Soup is cold, the chicken is running.

Soup is cold!
Soupy doopy doup.

Farwell, sweet taste of mine.
Farwell, sweet taste of boiling.
Farwell sweet boiling freak.
Welcome, you dancing chicken of tricks!
You're sweeter than a hot, dandy frozen image of this soup.

Freeze,
Guess, the soup is warm now.
Guess, I'm filled.

"The soup is cold! The chicken is running!"

- A tasty mini cabaret -
Commissioned by Ensemble Fanfaronner
with support from Arts Council Norway

Arnt Håkon Ånesen (2008)

$\text{♩} = 82$

Soprano

Light sound.
mf

Soup soup soup soup chick - en soup is run - ing

2 spoons at pf

ppp

Use the grips of the spoons to make tremolo

Mezzo-soprano

Dark sound.
p ————— *fp* ————— *p*

Chick - en. Sou

2 spoons at pf

ppp

Use the grips of the spoons to make tremolo

$\text{♩} = 82$

Pianoforte

8va

With humour
pp secco

pp

Ebow at pianostring (8vb)

S. *mf* *f* *ff*

10 *5* *5* *5* *5* *5* *5* *5*

Parodically grave.

soup chick en soup soup loop! is runn - ing loop is cold. Chick en soup. s - ou - p!

2 sp. *mf* *ff* *mp*

Mezzo-soprano *f* *ff*

s - ou - p!

M-S. *p* *ff* *mp*

Parodically grave.

chick en. Chick en soup! s - ou - p!

2 sp. *ff* *mp*

Pf. *f* *f*

Parody of the grave.

f Ped.

Ebow (8vb) *mp*

23 $\text{♩} = 60$ $\text{♩} = 80$

S. *f pp* *ppp* *mf*
Ch Chi - *cken* *soup.* *Soup*

2 sp. *mp* *ppp*

M-S. *f pp* *pppp* *mf*
Ch Chi - *cken -* *soup.* *Soup*

2 sp. *mf* 5 *ff*

Pf. $\text{♩} = 60$ $\text{♩} = 80$ *Partly with humour*
ff mp mf ff mp mf mf mp
ff mp ff *8^{va}* *8^{vb}* *pp* *8^{vb}*
Ped. *mf*

Ebow (8vb)

39

S.

mp

5

5

chick

ff

5

5

mp

M-S.

- z - - - ing.

z - - -

mp

mf

ff

Pf.

ff

secco

ff

8va

loco

Ebow (8vb)

49

S.

ff **rall.**

soup dan - - dy b - ones.

2 sp.

M-S.

ff

soup dan - - dy b - ones.

2 sp.

Pf.

fff **rall.**

f *mf*

5

Ebow (8vb)



10

$\text{♩} = 86$

Parody of the nobel.
mp *ff*

Parodically nobel, with "round" sound.
pp

S. 58

T,t,t,t,t,t,t,t,t,t - Tones.

mp *ff*

2 sp.

Mezzo-soprano

Parody of the nobel.
mp *ff*

Parodically nobel, with "round" sound.
pp

M-S.

T,t,t,t,t,t,t,t,t,t - Tones.

mp *ff*

2 sp.

$\text{♩} = 86$

Pf.

secco

ppp *fff*

mf *f*

Ebow (8vb)

♩ = ca. 68, rubato ad lib.

S. *f* 64 *f* *mf* **G.P.** *mf*

The chick - en was runn - ing fast from fro - z - en. From - froz - en chicks. And laught as he turned - the spoon 'round.

2 sp.

Mezzo-soprano *f* *mf*

From - froz - en chicks.

M-S. *f* *mf* *f* *mf* *f*

The chick - en was runn - ing fast from froz - en chicks. And laught as he turned the spoon 'round.

2 sp.

♩ = ca. 68, rubato ad lib.

Parodically traditional.

Pf. *mf* *mf* *mf* **G.P.** *mf*

f *f* *f*

Ebow (8vb)



12

♩ = 130

G.P.

71

S.

2 sp.

M-S.

2 sp.

♩ = 130

With humour.

8va

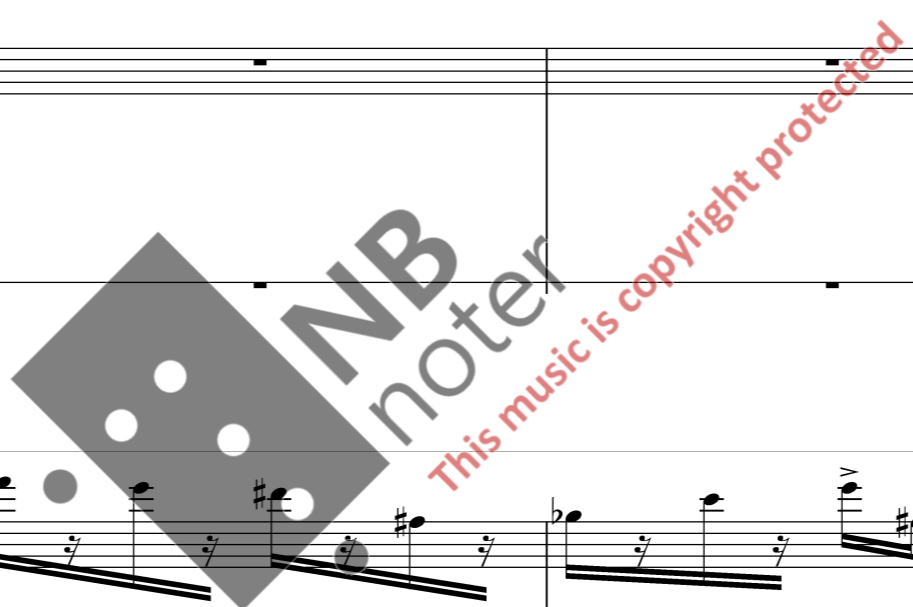
G.P.

Pf.

f
secco

ff

Ebow (8vb)



♩ = ca. 74, rubato ad lib.

Parodically nobel,
with "round" sound.

S. *mf* 75 *mp* *f* **G.P.** *mf* 5

Then he turned the_ oth - er cheek, and puzz - le - d by his_ sounds, with_ b - ones rasp - ing

2 sp. $\frac{2}{4}$

M.S. *mp* *mp* *f* **G.P.** *mf* 5

Then he turned the_ oth - er cheek, and puzz - le - d by his_ sounds, with_ b - ones rasp - ing

2 sp. $\frac{2}{4}$

Mezzo-soprano *mf* 5

puzz - le - d by his_ sounds, with_ b - ones rasp - ing

♩ = ca. 74, rubato ad lib.

Surrealistically traditional.

G.P.

Pf. *mf* *mp* *mf* *pp* *ff*

Ebow (8vb) $\frac{2}{4}$

82

S.

f *mp* *f* *mp*

ever - y - where through the s - - ou - - p!

He pleased him - self from ever - y

2 sp.

M.S.

f *mp* *f* *mp* *ff*

ever - y - where through the s - - ou - - p!

He pleased him - self from ever - y

2 sp.

Mezzo-soprano

from ever - y

Pf.

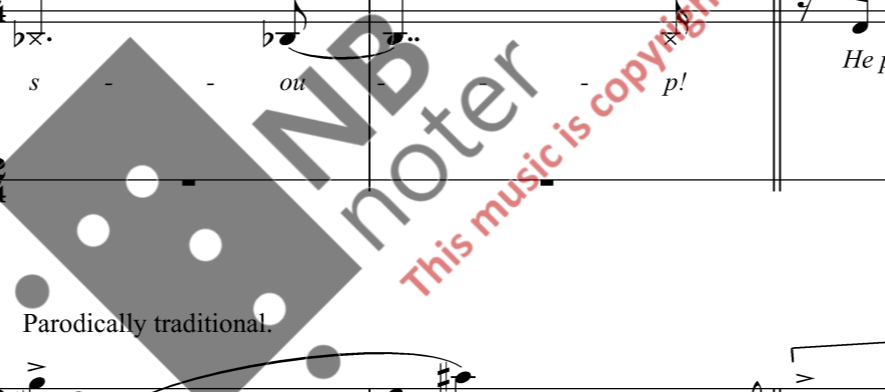
pp *f* *mf* *mp* *mf* *mp*

pp *f* *mf* *mp* *mf* *mp*

8vb

Red.

Ebow (8vb)



Parodically traditional.

88 S. *mf* *pp* *f* **G.P.** *ff* *mf* 15
sin- gle re- sponse and_ look - ed for fun. some - where a - round the midst of his tongue. And g - uess, the next

M.S. *p* *f* *mf* *f*
sin- gle re - spons and_ look - ed for fun some - where a - round the midst of his tongue And g - uess, the next

Pf. *mp* *f* *mp* *f* *mp* *fff* *pp* *f* > *pp* > *ppp* *mf* *3* *8va*
mp *f* *mp* *f* *mp* *fff* *pp* *f* > *pp* > *ppp* *mf* *3* *8va*

Ebow (8vb)



16

95

S.

p *f* *mf* *mp* *pp* *f*

m - mor - ning he was found in a heart - - - - - break - - - - - ing

2 sp.

Mezzo-soprano

mf *mp* *f* *ff* *mf*

m - mor - ning he was found in a heart - - - - - break - - - - - ing

2 sp.

Pf.

f *ff* *mp* *ff* *mf* *mp* *mf* *mp*

loco

3

5

Ebow (8vb)

S. 99

sort of froz - en cold - blood - ed chick - en

ff *fff* *mp* *f*

2 sp.

Detailed description: This system shows the vocal line for the Soprano (S.). It begins at measure 99. The lyrics are "sort of froz - en cold - blood - ed chick - en". The music features a melodic line with various dynamics: *ff* (fortissimo) for "froz", *fff* (fortississimo) for "cold - blood - ed", *mp* (mezzo-piano) for "chick", and *f* (forte) for "en". There are slurs and accents throughout. The accompaniment consists of two staves of piano (2 sp.) with a few notes in the first measure.

M-S.

sort of froz - en cold - blood - ed chick - en

mp *ff* *mp*

2 sp.

Detailed description: This system shows the vocal line for the Mezzo-Soprano (M-S.). The lyrics are "sort of froz - en cold - blood - ed chick - en". The dynamics are *mp* (mezzo-piano) for "sort of froz", *ff* (fortissimo) for "cold - blood - ed", and *mp* (mezzo-piano) for "chick - en". The accompaniment consists of two staves of piano (2 sp.) with a few notes in the first measure.

Pf.

fff *mf* *pp* *mf* *pp* *mf* *f* *pp* *f* *fff* *f* *fff*

Ebow (8vb)

Detailed description: This system shows the piano accompaniment. The piano part (Pf.) has two staves. The upper staff contains a complex rhythmic pattern with dynamics *fff*, *mf*, *pp*, *mf*, *pp*, *mf*, *f*, *pp*, *f*, *fff*, *f*, and *fff*. The lower staff has a few notes with a *mf* dynamic. The Ebowa part (8vb) is a single staff with a few notes. A large watermark "NB noter" and "This music is copyright protected" is overlaid on the piano part.

18 ♩ = 98

Gradually hardening sound with humour.

S. *mf* *fp* *mf*

soup soup. S - oup - y

2 sp. *mp*

M-S. *mf* *fp*

soup soup. Soup - y

2 sp. *mp* *fff*

Pf. *f* Surrealistic.

Ebow (8vb)

106

S.

doup.

mp

mp

ff Wild!

Cold,

blood - y soup.

2 sp.

* Place elbow at given string on pianoforte

M.S.

mf

d - oup - - y.

mp

mp

ff Wild!

Cold,

blood - y soup.

2 sp.

Mezzo-soprano

ff Wild!

Cold,

Wild!

ff

Cold,

blood - y soup.

Pf.

fff

fff

8va

Ebow (8vb)

* Ebow placed by Soprano

20

♩ = 102

Hard sound.
fp

fff

S. *III*

Freeze - - - - - z.

2 sp.

Hard sound.
fp

fff

M-S.

Freeze. - - - - - z.

2 sp.

mf 5

♩ = 102

With parodic love!

Pf.

fff *f* *ff* *ff*

8va *3* *8va*

8vb *f* *ff* *ff*

Red.

Ebow
(8vb)



♩ = 112

Hard, intense and gradually with a lot of parodically humour.

114

S. *fp* *fff* *ppp* *mf*

Tease _____ Tease _____ your own taste _____ while _____

2 sp. *mp*

Hard, intense and gradually with a lot of parodically humour.

M-S. *fp* *fff* *ppp* *mf*

Tease _____ Tease _____ own taste _____

2 sp. *mp* 5

♩ = 112

Very parodically traditional.

Pf. *f* *f* *mf*

f *f* *mf*

mf 5

Ped. _____

Ebow (8vb)



122

S.

sipp - - - ing *cold* *loop*

2 sp.

ff

M-S.

sipp - ing *cold* *soup -*

2 sp.

f

* Place elbow at given string on pianoforte

Pf.

secco *ff*

8va

ff *f* *mp* *f*

Parodically beautiful.

fff 8vb *mf* *mp*

Red.

Ebow (8vb)

mp

* Ebow placed by Mezzo-Soprano

accel.

127

S.

2 sp.

M-S.

2 sp.

accel.

Gradually parodically ugly!

Pf.

Ebow (8vb)

24

$\text{♩} = 112$

Light sound (sing with airy voice)

131

S.

mp *ff*

A - while later - he went on, lost from ever y kind of boil

2 sp.

Light sound (sing with airy voice)

M-S.

mp *ff*

A - while later - he went on, lost from ever y kind of boil.

2 sp.

$\text{♩} = 112$

Parodistic sadness.

Pf.

mp *ff* *f* *fff* *mf*

mf *mp* *p* *mf* *f* *mf* *mf* *p* *f* *p* *f* *mf*

Ebow (8vb)

mp



139 Gradually normal voice.

S. *where's my spoon. Spoon. al niente*

2 sp.

M.S. *Where's Spoon al niente*

2 sp.

Pf. *ff mp fff ppp*

f ff mf ff

3 5 3

8va

gradually fade out pedal

Ebow (8vb)

26

Gradually parodistic

Normal voice.
mp

f *ppp*

G.P.

mf *mp* *p*

S. *148*

Soon he's go - ne where's the chick, boil - ing the chick is. Is chick the b - oil - ing

2 sp.

Gradually parodistic

Normal voice.
mp

f *ppp*

Mezzo-soprano *f* *p*

the b - oil - ing

M-S. *148*

Soon he's go - ne where's the chick, boil - ing the chick is. Is chick the b - oil - ing

2 sp.

G.P.

With parodistic mixture of sadness and happiness.

Pf.

ppp *f* *ppp* *mf* *mp* *ppp* *f* *mf*

p *mf* *ppp* *mf* *mp* *ppp* *f*

Ebow (8vb)

S. *f* *5* *ff* *5* *fff* *5* *p* **G.P.** *mf* *ff* *f* *5* *5*

chick. Chick. the boil - ing. chick. He's gone. So long! Sprung. Done. Away from

2 sp.

Mezzo-soprano *f* *5* *ff*

Very parodistic sadness.s

He's gone. So long!

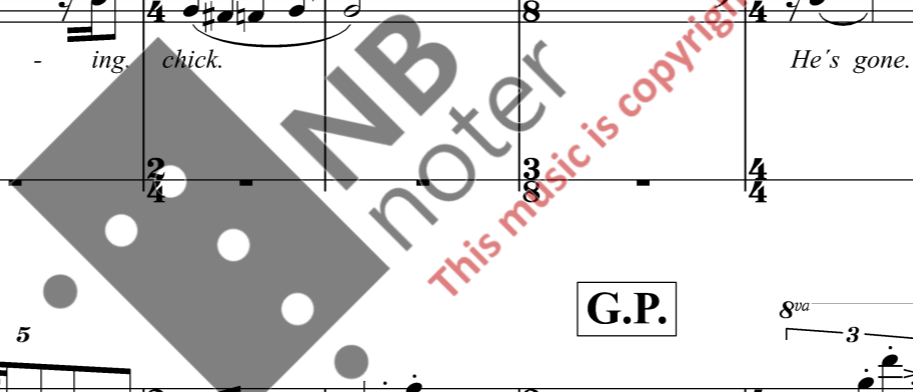
M-S. *mp* *5* *mf* *5* *f* *5* *mp* *5* *mf* *pp* **G.P.** *f* *5* *ff* *f* *5* *5*

chick. Chick. the boil - ing. chick. He's gone. So long! Sprung. Done. Away from

2 sp.

Pf. *mp* *f* *mp* *f* *mf* *mp* *5* *mp* *mf* *mp* *mf* *p* *mf* *mp* *8va* *3* *loco* *mf* *f* *p* *3* *5* **G.P.** *mf* *5*

Ebow (8vb)



28

♩ = 80

poco accel.

S. ¹⁶⁵ $\overbrace{\quad\quad\quad}^5$ $\overbrace{\quad\quad\quad}^5$ *ff*

the spoon, done boil - ing. Ain't it grav - e ly weird?

2 sp. $\frac{6}{4}$ $\frac{4}{4}$

M-S. $\overbrace{\quad\quad\quad}^5$ $\overbrace{\quad\quad\quad}^5$ *ff*

the spoon done boil - ing. Ain't it grav - e ly weird?

2 sp. $\frac{6}{4}$ $\frac{4}{4}$

♩ = 80

poco accel.

Pf. $\overbrace{\quad\quad\quad}^5$ $\overbrace{\quad\quad\quad}^5$ $\overbrace{\quad\quad\quad}^5$ $\overbrace{\quad\quad\quad}^5$ $\overbrace{\quad\quad\quad}^5$ $\overbrace{\quad\quad\quad}^5$

$\frac{6}{4}$ $\frac{4}{4}$

Ebow (8vb) $\frac{6}{4}$ $\frac{4}{4}$



♩ = ca. 130, rubato ad lib.

(remember: without pitch)

Parodistic mixture of anger and happiness.

S. 170

ff ha! f Lust - y bones are so ea - sy to find. mp

2 sp.

M-S.

ff ha! (remember: without pitch) f Whisper quite fast with angry, deep sound: "Lusty bones are so easy to find. Small tasty smiles. Lusty bones are easy to find, boiling smiles." mp

2 sp.

♩ = ca. 130, rubato ad lib.

Surrealistic

Pf.

ff mp mf mf

ff Ped. gradually fade out pedal mf mf

Ebow (8vb)



30

S. 177 *mf* *fp*

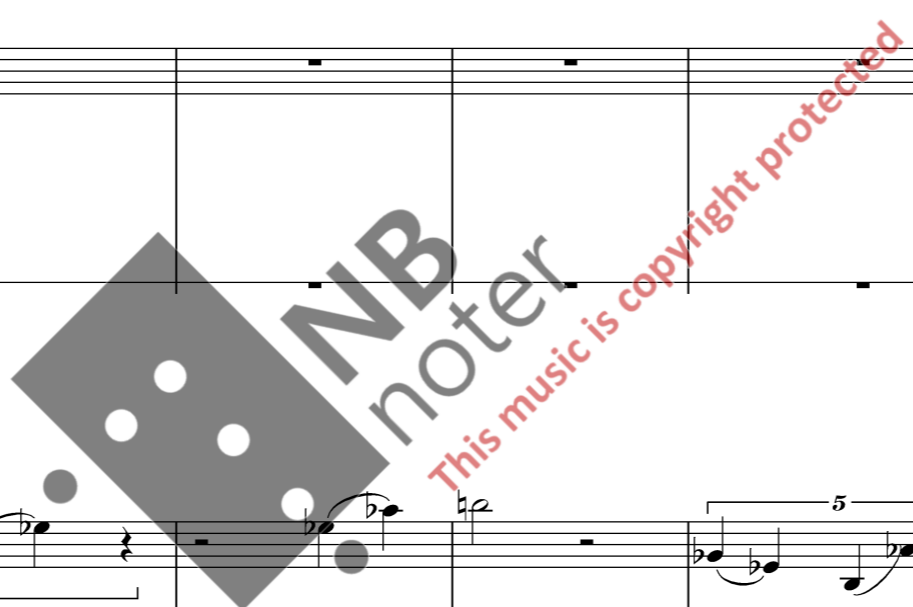
Small tas-ty smiles. Lust - y b-ones are eas - y to find, boil - ing smi - l - - s -

2 sp.

M-S. 2 sp.

Pf. *mf* *mf* *mp* *mf* *mf* *mf*

Ebow (8vb)



Whisper very slowly with intense light sound:
"Will this taste always bitter be, or will it for ever hang over my shoulder?"

184 *mp*

S. *Soup....*

2 sp.

M.S. *f* Parodically brave. *mp* *f*
I am the cold chick - en male. A - fraid, a - fraid like, you and will this taste always bitt - er be, or

M.S. *f* Parodically brave. *mp* *f*
I am the cold chick - en male. A - fraid, a - fraid like, you and will this taste always bitt - er be, or

2 sp.

Pf. Parodically traditional. *ff* *mf* *f* *mf*
3 *5* *5* *5*

Ebow (8vb)

rit.

G.P.

Gradually intense, hardening sound.

S. 191

mf mp mf mp

Hang - ing o - ver my

2 sp.

Gradually intense, hardening sound.

M-S.

mf mp mf mp mf

will it for ev - er hang ov - er my shoul - der? ing o - ver my

2 sp.

Gradually intense, hardening sound.

rit.

G.P.

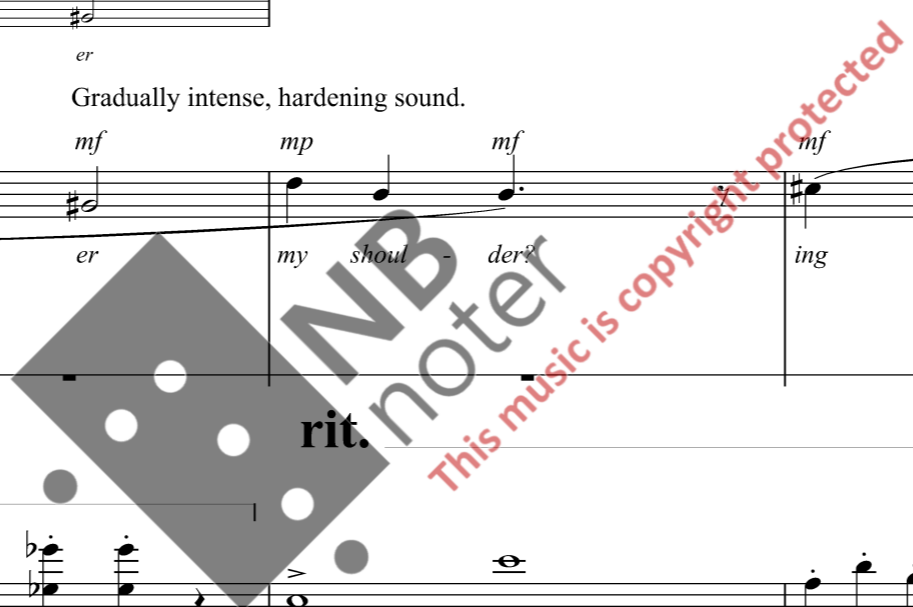
Pf. 8va

f mf mf mp fff

mf 3 mp fff

Ped.

Ebow (8vb)



G.P.

♩ = 160

196

S.

2 sp.

3

3

M-S.

2 sp.

3

3

♩ = 160

G.P.

Pf.

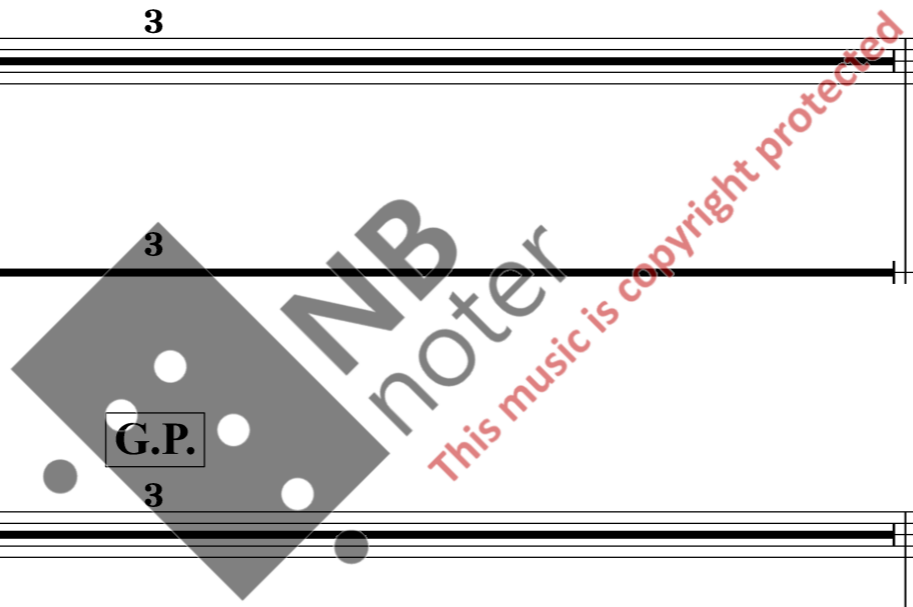
Ebow (8vb)

3

3

3

pp



34

(No beauty voice! The parody is obvious)

S. *200 fff*

Soup is cold the chick-en is runn - ing. Soup is cold, the chick - en is runn - ing. Soup is cold, the chick - en is runn - ing. Soup is cold, the chick

2 sp.

(No beauty voice! The parody is obvious)

M-S. *fff*

Soup is cold, the chick en is runn - ing. Soup is cold the chick-en is runn - ing. Soup is cold, the chick - en. is

2 sp.

Total anger, without any kind of humour!

Pf.

fff pp fff pp mf f

Ebow (8vb)



f

>

Soup

Ugly, hard sound.

f

>

Soup

205

S.

en is runn - ing. Soup is cold. The chick - en is runn - ing Soup is cold.

2 sp.

M-S.

runn - ing. Soup is cold. The chick - en is runn - ing Soup.

2 sp.

Pf.

ff *p* *fff*

Ebow (8vb)



rit.

210 *f*

S. *f* *f* Playful *mf*

is cold! Soup - y doup - y doup - y doup - y doup - y doup, soup - y doup. Soup - y doup - y doup - y doup - y doup - y doup, soup - y

2 sp. *ppp* Make tremolo with heads of the spoons.

M-S. *f* *f* Playful *mf*

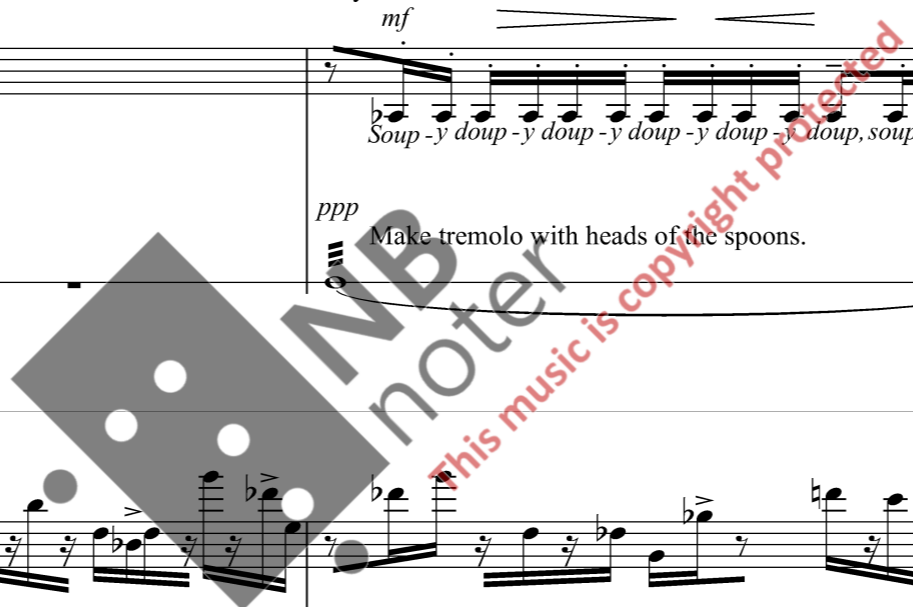
is cold! Soup - y doup - y doup - y doup - y doup - y doup, soup - y doup. Soup - y doup - y doup - y doup - y doup - y doup, soup - y

2 sp. *ppp* Make tremolo with heads of the spoons.

rit.

Pf. *mf* *pp*

Ebow (8vb)



Intense beauty voice, with much vibrato.
The parody is obvious.

♩ = 130

214

S.

doup. Soup-y doup-y doup-y doup-y doup-y doup, soup-y doup. doup-y doup-y doup-y doup, soup-y doup.

mp Far - well, sweet taste of mine.

2 sp.

Intense beauty voice, with much vibrato.
The parody is obvious.

M-S.

doup. Soup-y doup-y doup-y doup-y doup-y doup, soup-y doup. doup-y doup-y doup-y doup, soup-y doup.

mf Far - well sweet taste of mine.

2 sp.

♩ = 130

Pf.

Ebow (8vb)

38

♩ = 92

217 *f* *pp* *mf* *pp*

S. *Far - well, sweet taste of boil - ing, far - well sweet boil - ing freak. Wel - come you danc - ing chick - en of tricks!*

2 sp.

mp *f* *pp*

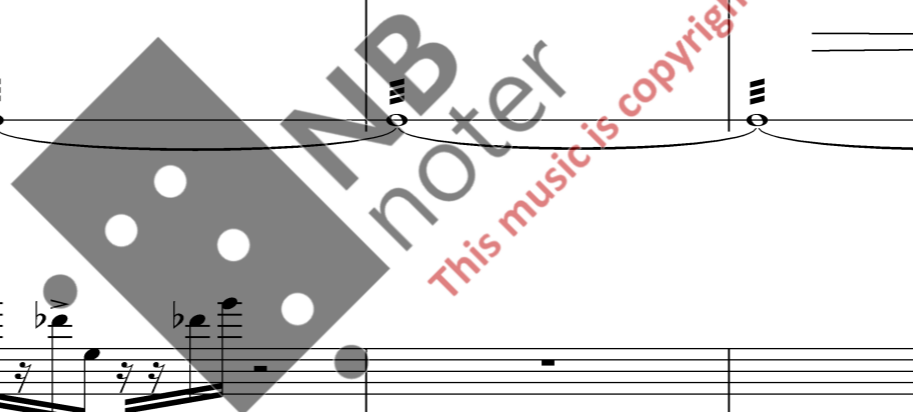
M.S. *Far - well sweet taste of boil - ing, far - well sweet boil - ing freak. Wel - come, you danc - ing chick - en of tricks!*

2 sp.

♩ = 92

Pf.

Ebow (8vb)



Gradually less vibrato, less parody, more naturally beautiful sound.

223

S.

pp *mf* *ppp*

You're sweet-er than a hot, dan-dy froz-en im-age of this soup.

2 sp.

al niente

Gradually less vibrato, less parody, more naturally beautiful sound.

M-S.

pp *f* *p*

Your're sweet-er than a hot, dan-dy froz-en im-age of this soup.

2 sp.

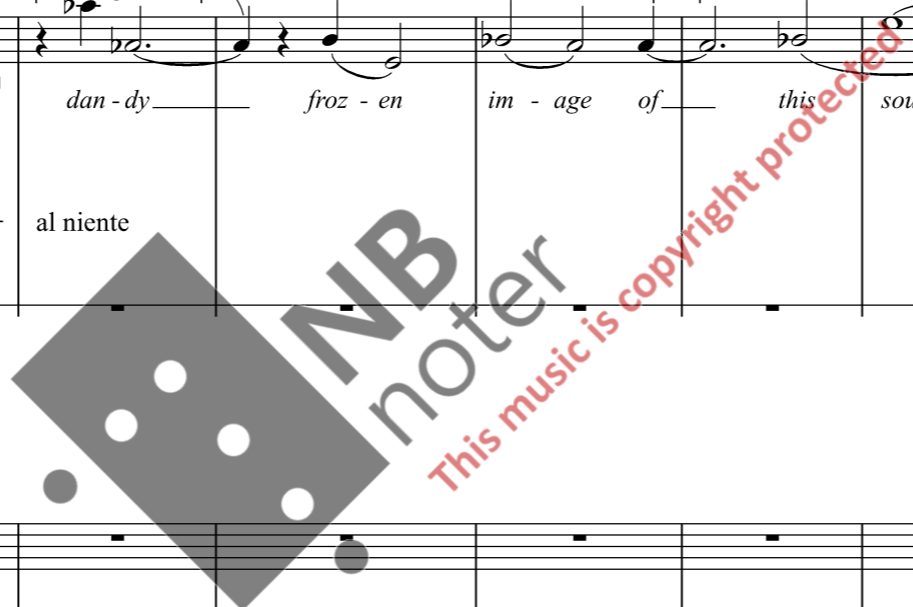
al niente

Pf.

gradually fade out pedal

Ebow (8vb)

mf



40 $\text{♩} = 82$

S. *f* Hard sound. *pp* *mp* *f* *mp*

235

Freeze. Guess, the soup is

2 sp. *mp* *mf* *mp* *mf* *mp* *mf* *mp* *p* *f*

M-S. *mf* *mp* *f* *mp*

Hard sound.

Freeze. Guess, the soup is warm now

2 sp. *mp* *mf* *mp* *mf* *mp* *mp* *mf* *mp* *p* *f*

$\text{♩} = 82$ Dying humour.

Pf. *p* *ff* *ppp*

mp *ff* *mp*

Ebow (8vb)

rall.

Very natural and beautiful sound, with no parodisitic undertones.

S. 239

f

warm now.

Guess, I'm filled...

pp *mp*

2 sp.

p ff *pp* *ff*

pp *pp* *ff*

5 5

M.S.

mf

Warm.

Very natural and beautiful sound with no parodisitic undertones.

Guess, I'm filled...

pp *mf*

2 sp.

p ff *pp* *ff*

pp *pp* *ff*

3 3

rall.

Surrealistically traditional

Very traditional.

Pf.

f *ppp*

f *ppp*

mf *f*

mf *f*

5 5

Red. quick drop of pedal

Ebow (8vb)

