

Arnt Håkon Ånesen 2010
(Arnt Haakon Aanesen)

Simurgh

Written to Nouvel Ensemble Moderne



for Bass Clarinet in Bb
Contrabassoon
Bass Trombone
Violoncello
and
Double Bass (5-strings)

Duration: 2 min

Simurgh

The score is transposed.

Written to Nouvel Ensemble Moderne

Arnt Håkon Ånesen 2010
(Arnt Haakon Aanesen)

♩ = 148

Bass Clarinet in B \flat
pp *f* *mf* *mf*

Contrabassoon
fp *mf* *mp*

Bass Trombone
Con sordino
pp *mp* *mp* *ppp*

Violoncello
ppp

Double Bass (5-strings)
Sul ponticello V *f* *gradually normale* normale *ppp* *gradually Sul ponticello and tremolo* *fff*

This music is copyright protected

A

7

B. Cl. (fluttersong) *mf* *ppp sub* *fff* *pppp*

Cbsn. *f* *ppp sub* *fff* *pppp sub.*

B. Tbn. Senza sordino Con sordino *ppp*

Vc. (irregular tremolo) *fff* normale *fff* *pp* (sim.)

D.B. normale Sul ponticello *fff* *ppp*

This music is copyright protected

Detailed description of the musical score: The score is for five instruments: B. Cl., Cbsn., B. Tbn., Vc., and D.B. It is divided into measures. The B. Cl. part starts with a triplet of eighth notes, followed by a flutter-tongued passage. Dynamics range from *mf* to *pppp*. The Cbsn. part starts with a forte (*f*) note, followed by a *ppp sub* passage, and then a *fff* passage. The B. Tbn. part has a *ppp* note. The Vc. part features an irregular tremolo, followed by a *fff* passage, and then a *pp* passage. The D.B. part has a *fff* passage and a *ppp* note. Performance instructions include 'Senza sordino' and 'Con sordino' for the B. Tbn., and 'Sul ponticello' for the D.B. A large watermark 'NB noter' and 'This music is copyright protected' is overlaid on the score.

14

B. Cl. *mp* *pppp* *mp* *ppp*

Cbsn. *pp* *p* *ppp*

B. Tbn. *fp* *fp* *ppp*

Vc. *pppp* *pppp*

D.B. *fff* *fff* *ppp*

Gradually normale

B. Cl. *f* *p sub.* *pp* *ppp*

Cbsn. *mf* *p sub.* *ppp* *ppp*

B. Tbn. *fp* *fp*

Vc. Normale *pppp*

D.B. (irregular tremolo) *f* *pp sub.* *pp* *ff*

Senza sordino

Gradually sul tasto

NB noter
This music is copyright protected

C

26

B. Cl.

Musical notation for B. Cl. (Bass Clarinet) in treble clef. It features a triplet of eighth notes in the first measure, followed by a series of eighth and sixteenth notes. Dynamics include *fff* and *ff* with hairpins, and a *ppp* dynamic in the final measure.

Cbsn.

Musical notation for Cbsn. (Contrabassoon) in bass clef. It includes a triplet of eighth notes and various note values. Dynamics range from *f* to *pp*, *ff*, *mp*, and *f*.

B. Tbn.

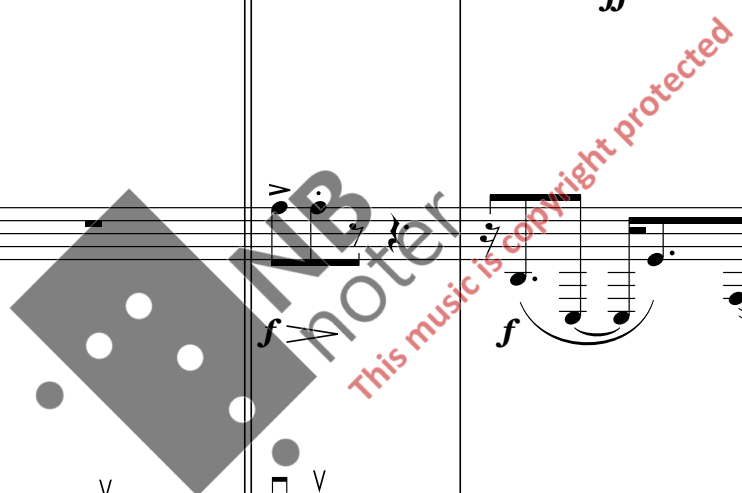
Musical notation for B. Tbn. (Baritone Trombone) in bass clef. It features a triplet of eighth notes and other rhythmic patterns. Dynamics include *fp*, *f*, and *mp*.

Vc.

Musical notation for Vc. (Violoncello) in bass clef. It includes a triplet of eighth notes and various note values. Dynamics include *mf*, *ppp*, and *fff*.

D.B.

Musical notation for D.B. (Double Bass) in bass clef. It includes a triplet of eighth notes and various note values. Dynamics include *ppp*, *f*, *ff*, and *pppp*. The word "Normale" is written above the first measure.



D

B. Cl. *mf* *ppp* *pppp*

Cbsn. *mf* *mp* *mf* *fff*

B. Tbn. *mp* *mp*

Vc. *mp* *p* *ff ppp sub.* *gliss.* *al niente*

D.B. *p* (irregular tremolo) *ff* *ff* *pppp*

Con sordino

Gradually sul tasto, very intense

This music is copyright protected