

Arnt Håkon Ånesen - 2015

*"Signs of Sleep"*

for Bass Clarinet in Bb  
Commissioned by Kristine Tjøgersen  
with support from Art Council Norway

Durata: approx. 10 min.

*"I love sleep. My life has a tendency to fall apart when I'm awake, you know?"*  
*- Ernest Hemingway*



Explanations written in score.

---

*This piece is based on a common artistic experience  
of the musician and composer behind the music:*

*The film "Science of Sleep" directed by  
Michel Gondry.*

*This cinematic masterpiece was the duo's first topic of conversation.  
And so they dreamt on..*



AB  
noter  
This music is copyright protected



11 Airy sound 11 sec gradually normale

*mp* *p* *fff* *pp* *ffff* *mp* *ff* *pp*

14  $\text{♩} = 212$  gradually overblow

*ff* *fff* *pp*

3

sim. 3 sec.

sh..!

Vocal into instrument.

15 ♩ = 102      ♩ = 84      rit. . . . . ♩ = 62

normale *tr*

*p* < *mp* > *n*      *mf* > *p* > *n*      *p* > *pp*

*soffio* → *sh..*

23 *tr*      ♩ = 98 Airy sound      normale

*mf* *soffio* → *sh..*      *mp* > *ff*      *mp* > *f*

27

8<sup>va</sup> 3 sec. 8<sup>va</sup> 7 sec.

Gradual overblow

normale Airy sound

5 3 5 3

Air

sim.

*ff* *ff* *ffff* *mp* *mf* *pp*

31

Vocal into instrument.

16 sec

normale poco vibrato

*mf* *p* *mf* *ppp*

normale Airy sound (3, 2, 2, 2, 3)

*ppp* *n* *mf* *mp*

*mp* = 176

33

soffio

*mp* *mp* *f* *mp* *ff* *mf* *n*

sh..!

"Signs of Sleep"

38  $\text{♩} = 32$   $\text{♩} = 76$  rit.  $\text{♩} = 56$

Vocal into instrument.

*n* < *mf* > *n* *n* *mp* *n* *n* *mp* *n* *n* *mp* *n*

*sh..* *n* < *mf* > *n* *mp* *p* *mp* *p* *p* *mp* *p* *p* *mp* *p* *p* *mp* *p*

44  $\text{♩} = 152$

*f* *fff* *mf* *fff* *mp* *f* *fff* *ff*

3 sec



50  $\text{♩} = 176$  **accel.** .....  $\text{♩} = 260$  **accel.** .....

Vocal into instrument.

*n* *mp* *n*

(3, 2, 2, 2, 3)  
Airy sound

(2+3+2+2+3) (2+2+3+3+2) (2+2+3+3+2)

*ff* *mp* *mp* *ff* *mp* <

55  $\text{♩} = 410$  .....  $\text{♩} = 278$  **rit.** .....  $\text{♩} = 120$

Vocal into instrument.

*n* *mp* *n*

(2+2+2+2+2+2)

normale

*p* *mf* *n*

28 sec ♩ = 72 **accel.**

Vocal into instrument.

58

*mf* *p* *mf* *ppp*

poco vibrato

*ppp* *ppp*

*p* *mf* *n*

normale

*mp* *f* *n*

♩ = 98

Vocal into instrument.

60

*p* *mf* *n* *mp* *p* *n* *mp* *n*

*mp* *f* *n* *mp* *mf* *p* *n* *mp* *f* *n*

5 sec

Vocal into instrument.

65 **rit.** ..... ♪ = 72 ♪ = 76

mp ————— n n ————— mf > n p <———— mf —————

mp ————— f <———— pp n ————— f n pp <———— mp mf —————

68 ♪ = 146  
(3, 2, 2, 2, 3)  
Airy sound

ff ————— mp *sh..* pp p <———— mp *sh..* p pp <———— mp *sh..* mf

74

p ————— mf *sh..* pp ff p mp

81  $\text{♩} = 72$  accel. . . . .  $\text{♩} = 96$   $\text{♩} = 72$  accel. . . . .

Vocal into instrument.

normale

88  $\text{♩} = 96$   $\text{♩} = 72$   $\text{♩} = 86$

Vocal into instrument.

5 3 5 3

94

mp f mp ff p mf

5 3 5 3

Detailed description: This block contains musical notation for measures 94, 95, and 96. Measure 94 is in 4/4 time and features a piano line starting with a mezzo-piano (*mp*) dynamic, moving to fortissimo (*f*) by the end of the measure. Measure 95 is in 3/4 time, starting with mezzo-piano (*mp*) and ending with fortissimo (*ff*). Measure 96 is in 4/4 time, starting with fortissimo (*ff*) and ending with mezzo-forte (*mf*). The notation includes various rhythmic values, slurs, and dynamic hairpins. Fingerings are indicated with numbers 3, 5, and 3 above notes.

Vocal into instrument.

97

n ff n

f mp mf mp

(1+2+1+2)

5 5

Detailed description: This block contains musical notation for measures 97, 98, 99, and 100. Measure 97 is in 4/4 time, with a vocal line marked *n* (noisy) and an instrumental line starting with fortissimo (*f*). Measure 98 is in 6/8 time, with the vocal line marked *ff* and the instrumental line marked mezzo-piano (*mp*). Measure 99 is in 2/4 time, with the vocal line marked *n* and the instrumental line marked mezzo-forte (*mf*). Measure 100 is in 3/4 time, with the vocal line marked *n* and the instrumental line marked mezzo-piano (*mp*). The notation includes slurs, dynamic hairpins, and fingerings (5, 5). A rehearsal mark (1+2+1+2) is placed above the instrumental line in measure 98. A large watermark 'NB Moter' and the text 'This music is copyright protected' are overlaid on the score.

100

5 3 5 3

*p* *f* *mp* *p*

Detailed description: This system contains measures 100, 101, and 102. The music is in 3/4 time and features a complex melodic line with frequent chromaticism and accidentals. It includes several triplet markings (3) and quintuplet markings (5). Dynamic markings are *p* (piano), *f* (forte), *mp* (mezzo-piano), and *p* (piano) again. There are also hairpins indicating crescendos and decrescendos.

Vocal into instrument.

103

2/4 3/4 2/4

*mf* *mp* *ff* *mp* *p* *ff*

Detailed description: This system contains measures 103, 104, and 105. The top staff shows a vocal line with a long note in measure 103 and rests in 104 and 105. The bottom staff continues the instrumental line with triplets and quintuplets. Dynamic markings include *mf*, *mp*, *ff*, *mp*, *p*, and *ff*. Time signatures change from 3/4 to 2/4 and back to 3/4.

Vocal into instrument.

106

2/4 3/4 2/4 3/4

*mf* *mp* *mf* *p*

Detailed description: This system contains measures 106, 107, and 108. The top staff shows a vocal line with a long note in measure 106 and rests in 107 and 108. The bottom staff continues the instrumental line with triplets and quintuplets. Dynamic markings include *mf*, *mp*, *mf*, and *p*. Time signatures change from 2/4 to 3/4 and back to 2/4.

110

*f* *mp* *ff*

5 3 5 3 5 3

Detailed description: This system contains measures 110, 111, and 112. Measure 110 starts with a treble clef, a key signature of one sharp (F#), and a 3/4 time signature. It features a melody with a five-fingered scale-like run, a triplet of eighth notes, and a half note. Measure 111 changes to a 2/4 time signature and continues the melodic line with a five-fingered run and a triplet. Measure 112 returns to a 3/4 time signature, ending with a five-fingered run and a half note. Dynamics include *f*, *mp*, and *ff*. Fingering numbers 5 and 3 are indicated.

Vocal into instrument.

113

*mp* *mf* *ff* *mp* *mf* *p* *mf*

3 3 5 3 5 3

Detailed description: This system contains measures 113, 114, and 115. Measure 113 begins with a treble clef and a key signature of one sharp. The first staff is a vocal line that remains silent, indicated by a horizontal line with a fermata. The second staff is an instrumental line starting with a melody of eighth notes, including triplets and a five-fingered run. Measure 114 continues the instrumental melody with a five-fingered run and a triplet. Measure 115 concludes the system with a five-fingered run and a triplet. Dynamics include *mp*, *mf*, *ff*, *mp*, *mf*, *p*, and *mf*. Fingering numbers 3 and 5 are indicated.

Vocal into instrument.

116

*pp* *ff* *mp* *ff* *mp* *ff*

120

*mp* *p* *fff* *mp* *fff* *pp* *ffff* *mp* *ff* *p* *mf*

5 sec

$\text{♩} = 66$   
(♯)

15





133

Vocal into instrument.

ff mp mp mf mp

*n* *f* *n*

16 18

136

Vocal into instrument.

p mf ff 5 mp mf ff

*n* *mf* *n*

16 18 10 14 16

140

*p* *mp* *mp* *f* *pp* *f* *n* *ff* *fff*

18 16

R

8va

Vocal into instrument.

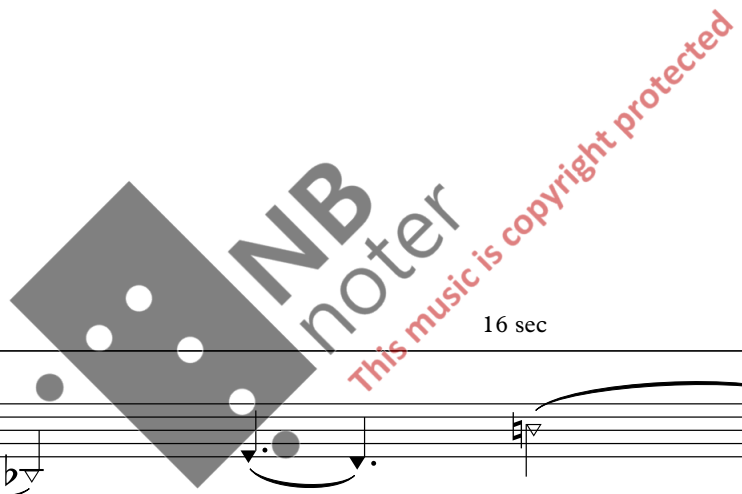
147

16 sec

*mf* *p* *mf* *ppp* *n*

poco vibrato

*ppp* *n*



11 sec

148

$\text{♩} = 106$

*fff mp fff pp ffff mp ff p f fff*

Vocal into instrument.

155

$\text{♩} = 78$

*mf fff ff f f ppp fff*

soffio → sh..

