

Brass Talks

for

Trumpets 3

Opt. piccolo trumpet

Trombones 3

by

Kjell Magne Andersen

* * *

©2010

Brass Talks

Kjell Magne Andersen

Moderato (♩ = c. 100)

+ Piccolo

A

Trp B \flat 1
Opt. Piccolo

Musical staff for Trp B \flat 1. The staff is in 4/4 time with a key signature of two flats. It begins with a *ff* dynamic and a half note. From the second measure, it features a series of eighth notes, alternating between *f* and *ff* dynamics. The piece concludes with a half note and a *mf* dynamic.

Trp. in B \flat 2

Musical staff for Trp. in B \flat 2. The staff is in 4/4 time with a key signature of two flats. It begins with a *ff* dynamic and a half note. From the second measure, it features a series of eighth notes, alternating between *f* and *ff* dynamics. The piece concludes with a half note and a *mf* dynamic.

Trp. in B \flat 3

Musical staff for Trp. in B \flat 3. The staff is in 4/4 time with a key signature of two flats. It begins with a *ff* dynamic and a half note. From the second measure, it features a series of eighth notes, alternating between *f* and *ff* dynamics. The piece concludes with a half note and a *mf* dynamic.

Trombone 1

Musical staff for Trombone 1. The staff is in 4/4 time with a key signature of two flats. It begins with a *ff* dynamic and a half note. From the second measure, it features a series of eighth notes, alternating between *f* and *ff* dynamics. The piece concludes with a half note and a *ff* dynamic.

Trombone 2

Musical staff for Trombone 2. The staff is in 4/4 time with a key signature of two flats. It begins with a *ff* dynamic and a half note. From the second measure, it features a series of eighth notes, alternating between *f* and *ff* dynamics. The piece concludes with a half note and a *ff* dynamic.

Trombone 3

Musical staff for Trombone 3. The staff is in 4/4 time with a key signature of two flats. It begins with a *ff* dynamic and a half note. From the second measure, it features a series of eighth notes, alternating between *f* and *ff* dynamics. The piece concludes with a half note and a *ff* dynamic.

Brass Talks

B

8

Tpt. 1
Opt. Picc.

Musical staff for Tpt. 1 (Opt. Picc.). The staff is in treble clef with a key signature of two flats. It begins with a whole note, followed by a quarter rest, then a half note with a slur. The dynamic *f* is marked. The staff continues with a whole rest, then a series of eighth notes, and ends with a whole note.

Tpt. 2

Musical staff for Tpt. 2. The staff is in treble clef with a key signature of two flats. It begins with a whole note, followed by a quarter rest, then a half note with a slur. The dynamic *f* is marked. The staff continues with a whole rest, then a series of eighth notes, and ends with a whole note.

Tpt. 3

Musical staff for Tpt. 3. The staff is in treble clef with a key signature of two flats. It begins with a whole note, followed by a quarter rest, then a half note with a slur. The dynamic *f* is marked. The staff continues with a whole rest, then a series of eighth notes, and ends with a whole note.

Tbn. 1

Musical staff for Tbn. 1. The staff is in bass clef with a key signature of two flats. It contains a continuous eighth-note pattern throughout the first four measures. In the fifth measure, there is a quarter note with an accent (>) and a fermata. The staff then has a whole rest for two measures, followed by a final eighth-note pattern.

ff

Tbn. 2

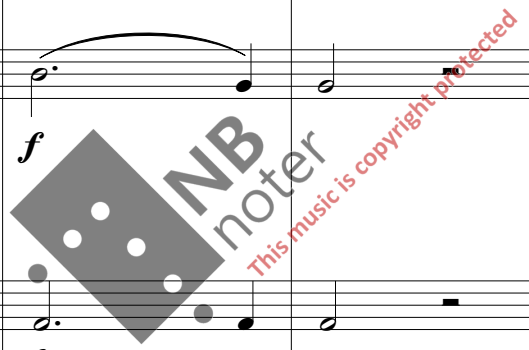
Musical staff for Tbn. 2. The staff is in bass clef with a key signature of two flats. It contains a continuous eighth-note pattern throughout the first four measures. In the fifth measure, there is a quarter note with an accent (>) and a fermata. The staff then has a whole rest for two measures, followed by a final eighth-note pattern.

ff

Tbn. 3

Musical staff for Tbn. 3. The staff is in bass clef with a key signature of two flats. It contains a continuous eighth-note pattern throughout the first four measures. In the fifth measure, there is a quarter note with an accent (>) and a fermata. The staff then has a whole rest for two measures, followed by a final eighth-note pattern.

ff



Brass Talks

C

15

Tpt. 1
Opt. Picc.

Tpt. 2

Tpt. 3

Tbn. 1

Tbn. 2

Tbn. 3

- piccolo Con sord.

f

Con sord.

f

Con sord.

f

mp

mp

Brass Talks

Maestoso ♩ = ca 94

22

Tpt. 1
Opt. Picc.

Tpt. 2

Tpt. 3

Tbn. 1

Tbn. 2

Tbn. 3

mf

mf

Brass Talks

29 D *mf* *Open* *rit.*

Tpt. 1
Opt. Picc.

Tpt. 2

Tpt. 3

Tbn. 1

Tbn. 2

Tbn. 3

39 **E** **Moderato** (♩ = c. 100) **Brass Talks** + Piccolo **F**

Tpt. 1
Opt. Picc.

Tpt. 2

Tpt. 3

Tbn. 1
1. Trp.

Tbn. 2
1. Trp.

Tbn. 3
1. Trp.

a tempo

f

f

f

f

f

f

f

Brass Talks

- piccolo

G

46

Tpt. 1
Opt. Picc.

Tpt. 2

Tpt. 3

Tbn. 1

Tbn. 2

Tbn. 3

f *mf* *ff*

H

Brass Talks

I

Tpt. 1
Opt. Picc.

Tpt. 2

Tpt. 3

Tbn. 1

Tbn. 2

Tbn. 3

+ Piccolo

fff

fff

fff

3 3 3 3

3 3

3 3

Brass Talks

58

J

Tpt. 1
Opt. Picc.

Musical staff for Tpt. 1 (Opt. Picc.). The staff contains a treble clef, a key signature of one flat, and a common time signature. The music begins with a whole note chord, followed by a rest. It then features a melodic line starting with a half note, followed by eighth notes, and ending with a half note. Dynamics include *mf* and *ff*.

Tpt. 2

Musical staff for Tpt. 2. The staff contains a treble clef, a key signature of one flat, and a common time signature. The music begins with a whole note chord, followed by a rest. It then features a melodic line starting with a half note, followed by eighth notes, and ending with a half note. Dynamics include *mf* and *ff*.

Tpt. 3

Musical staff for Tpt. 3. The staff contains a treble clef, a key signature of one flat, and a common time signature. The music begins with a whole note chord, followed by a rest. It then features a melodic line starting with a half note, followed by eighth notes, and ending with a half note. Dynamics include *mf* and *ff*.

Tbn. 1

Musical staff for Tbn. 1. The staff contains a bass clef, a key signature of one flat, and a common time signature. The music begins with a whole note chord, followed by a rest. It then features a rhythmic pattern of eighth notes, followed by quarter notes with accents, and ending with a quarter note. Dynamics include *mf* and *ff*.

Tbn. 2

Musical staff for Tbn. 2. The staff contains a bass clef, a key signature of one flat, and a common time signature. The music begins with a whole note chord, followed by a rest. It then features a rhythmic pattern of eighth notes, followed by quarter notes with accents, and ending with a quarter note. Dynamics include *mf* and *ff*.

Tbn. 3

Musical staff for Tbn. 3. The staff contains a bass clef, a key signature of one flat, and a common time signature. The music begins with a whole note chord, followed by a rest. It then features a rhythmic pattern of eighth notes, followed by quarter notes with accents, and ending with a quarter note. Dynamics include *mf* and *ff*.

