

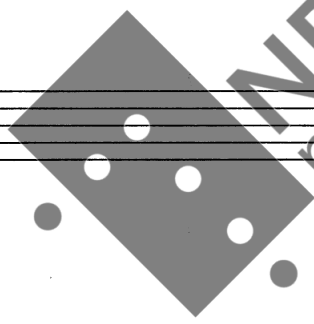
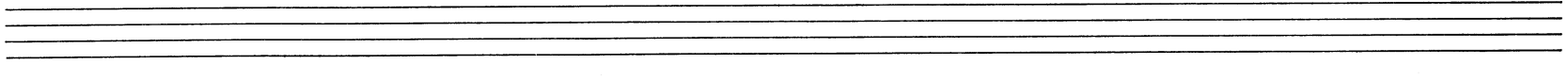
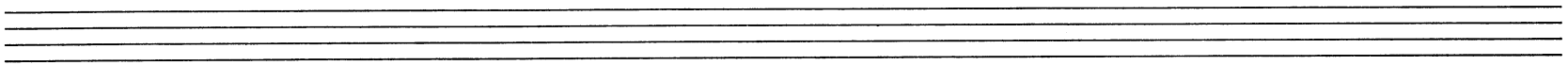
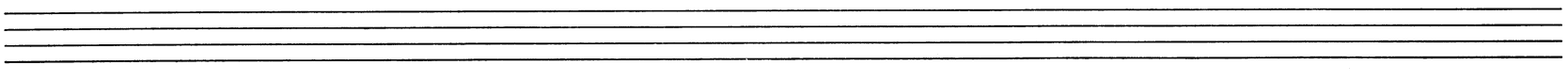
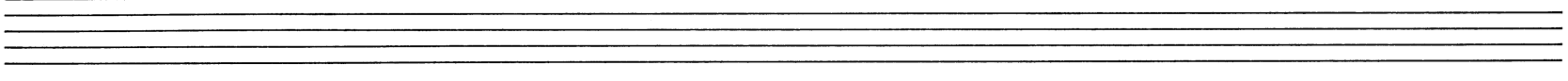
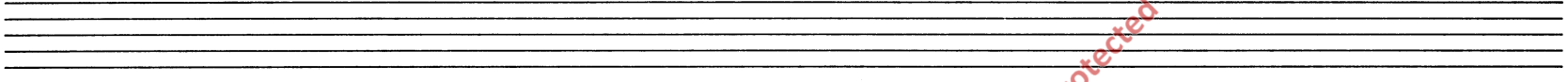
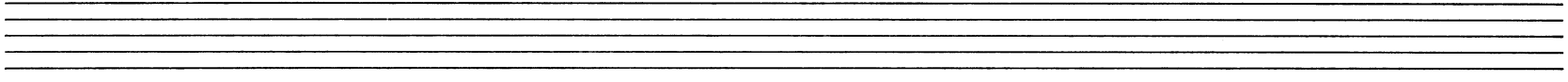
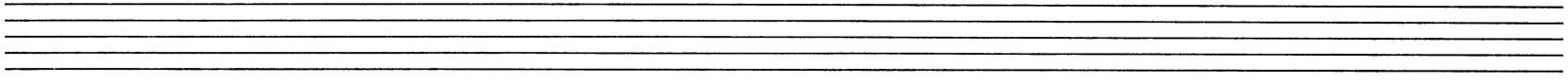
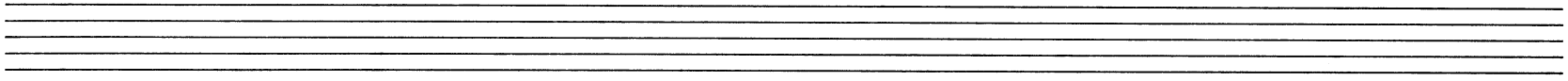
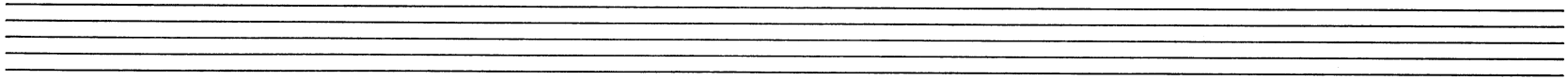
INTERMEZZO

FOR B^b-CLARINET, VIOLONCELLO,
5 CHINESE TEMPLEBLOCKS,
GUITAR AND PIANO.

DURATION: 7 min.

Tore S. Amundsen

Oslo 1979.



NB
noter

This music is copyright protected

INTERMEZZO

Tore Svads Amundsen, 1979.

not too fast

piano

pizz. 2)

1)

p

ff

ff

5

10

f

(ped.)

15

f

al niente

(ped.)

- 1) A finger glissando on the strings. Begins slowly, then accelerates.
- 2) pizz. using plectrum on the strings.

slowly 20

B^b-clarinet

mf

violoncello

p

sul D

gliss.

pp

25

clar.

mf

clar.

gliss.

pizz.

p

pp

30 $\text{♩} = 112$

'cello

mf *p*

5 Chinese temple blocks

f

35

clar.

p *mf* *sub p* *f*

'cello

p *f*

guitar

p *f*

40

clar.

'cello

guitar

5 temple blocks

piano

Ped

* Ped

1) Attack the chord, then depress the fort pedal as quickly as possible.

45

clar.

'cello

guitar

5 temple blocks

piano

(ped.)

Ped.

This music is copyright protected

50

clar.

mf

p

'cello

mf

p

guitar

f

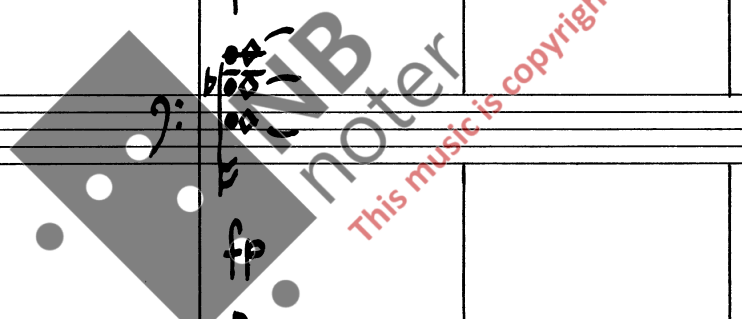
5 temple blocks

f

piano

(ped.)

* Ped. *



5 temple blocks

55

f

clar. legato

60

65

f

clar. #0

5 temple blocks

f



70

clar.

'cello

5 temple blocks

f

mf

mf

75

clar.

'cello

5 temple blocks

f

mf

gliss.

Handwritten musical score for measures 80-83. The score includes staves for clarinet, cello, guitar, and 5 temple blocks. Measure 80 is boxed. Dynamics include *mf* and *f*. The guitar part features a complex rhythmic pattern with many sixteenth notes.

Handwritten musical score for measures 84-87. The score includes staves for clarinet, cello, guitar, and 5 temple blocks. Measure 85 is boxed. Dynamics include *mf* and *f*. The cello part has a *gliss.* marking. A large watermark "NB noter" and "This music's copyright protected" is overlaid on the score.

Handwritten musical score for five instruments: clarinet, cello, guitar, 5 temple blocks, and piano. The score is written on five staves. A box containing the number '90' is located in the upper right corner of the piano staff. The piano part includes a glissando marked '1)' and a plectrum-picked section marked '2) pizz' and 'ff'. A wavy line labeled 'Ped.' is drawn below the piano staff. A large watermark 'NB noter' and the text 'This music is copyright protected' are overlaid on the piano staff.

Ped. ~~~~~

- 1) A finger glissando on the strings.
- 2) pizz. using plectrum on the strings.

guitar 95

piano

(ped.)

guitar 100

5 temple rocks

piano

'cello

mf

5 temple blocks

f

105

This block contains the first system of handwritten musical notation. It features two staves: the upper staff is for the cello, written in bass clef, and the lower staff is for 5 temple blocks, written in treble clef. The cello part begins with a dynamic marking of *mf* and includes a triplet of eighth notes in the fourth measure, with the measure number 105 boxed above it. The 5 temple blocks part starts with a dynamic marking of *f* and has a similar dynamic marking in the eighth measure. The system concludes with two empty staves.

'cello

mf

5 temple blocks

f

110

This block contains the second system of handwritten musical notation. It features two staves: the upper staff is for the cello, written in bass clef, and the lower staff is for 5 temple blocks, written in treble clef. The cello part begins with a dynamic marking of *mf* and includes a triplet of eighth notes in the fourth measure, with the measure number 110 boxed above it. The 5 temple blocks part starts with a dynamic marking of *f* and has a similar dynamic marking in the eighth measure. A large, semi-transparent watermark reading "MNB noter" and "this music is copyright protected" is overlaid across the center of the page, partially obscuring the notation. The system concludes with two empty staves.

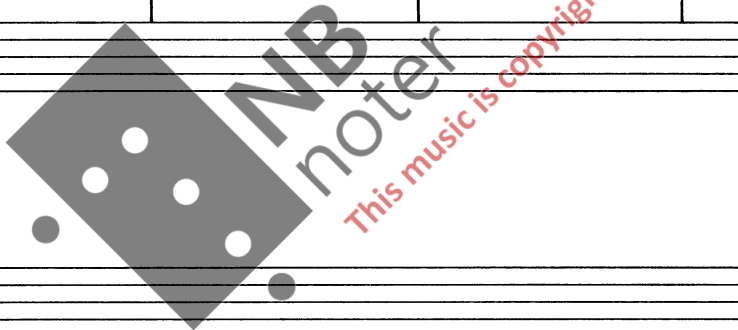
Handwritten musical score for Cello, 5 temple blocks, and Piano.

Cello: *mf* (mezzo-forte). Features a melodic line with triplets and a glissando marked **115**.

5 temple blocks: *f* (forte). Features rhythmic patterns in the first and third measures.

Piano: *p* (piano). Features a chordal accompaniment with the instruction *ord.* (ordinario).

Ped. sempre (pedal always).



Handwritten musical score for five instruments: clarinet, cello, guitar, 5 temple blocks, and piano. The score is written on five staves. The clarinet staff has a tempo marking of 120. The piano part includes dynamics such as p, mf, and f, and a marking for 8va. The guitar part includes sfz and tremolo markings. The 5 temple blocks part includes a dynamic marking of f. The cello part includes a dynamic marking of sfz. The piano part includes a dynamic marking of p. The score is marked with a large watermark 'NB noter' and 'This music is copyright protected'.

(Ped. sempre)

121

clar. *mf*

'cello *f* *gliss.*

guitar *sfz* *trem.* *sfz* *trem.*

5 temple blocks *f*

piano *mf* *(Ped. sempre)*

This music is copyright protected

125

clar. *mf*

'cello *f*

guitar *sffz* *trem.* *f* *sffz*

5 temple blocks

bra *mf*

piano *f*

130

Handwritten musical score for clarinet, cello, guitar, 5 temple blocks, and piano. The score is divided into four measures.

- Clarinet:** Measures 1 and 2 feature a half note with a sharp sign (#) and a dynamic marking of *mf*. Measure 3 features a triplet of eighth notes with a dynamic marking of *mf*. Measure 4 features a half note with a sharp sign (#).
- Cello:** Measures 1 and 2 feature a half note with a dynamic marking of *f*. A glissando line labeled "gliss." spans from the end of measure 2 to the beginning of measure 3. Measure 3 features a half note with a dynamic marking of *f*. Measure 4 features a half note with a dynamic marking of *f*.
- Guitar:** Measures 1 and 2 feature a rhythmic pattern of eighth notes with a dynamic marking of *sfz*. Measure 3 features a half note with a dynamic marking of *sfz*. Measure 4 features a half note with a dynamic marking of *f*.
- 5 temple blocks:** Measures 1 and 2 feature a rhythmic pattern with a dynamic marking of *f* and a tremolo marking "trem.". Measure 3 features a rhythmic pattern with a dynamic marking of *f* and a tremolo marking "trem.". Measure 4 features a rhythmic pattern with a dynamic marking of *f*.
- Piano:** The piano part consists of four staves. The first two staves (treble clef) play a chord of Bb and Eb. The last two staves (bass clef) play a chord of Bb and Eb. The dynamic marking is *f*. A pedal marking "(Ped. sempre)" is written below the piano part.

A large watermark "NB noter" is visible across the piano part, with the text "This music is copyright protected" written below it.

Handwritten musical score for Clarinet, Cello, Guitar, 5 temple blocks, and Piano. The score is divided into four measures. A box containing the number 135 is positioned above the second measure. The instruments and their parts are as follows:

- clar.:** First measure: *mf*, whole note. Second measure: *f*, eighth notes. Third and fourth measures: *f*, eighth notes with a triplet in the fourth measure.
- 'cello:** First measure: *f*, whole note. Second measure: *ff*, eighth notes. Third and fourth measures: *f*, eighth notes with a triplet in the fourth measure.
- guitar:** First measure: *sfz*, eighth notes. Second measure: *f*, whole note. Third measure: *sfz*, eighth notes. Fourth measure: *f*, whole note.
- 5 temple blocks:** First measure: *f*, eighth notes with a tremolo. Second measure: *f*, eighth notes. Third measure: *f*, eighth notes with a tremolo. Fourth measure: *f*, eighth notes.
- piano:** First measure: *mf*, sustained chords. Second measure: sustained chords. Third measure: *ff*, sustained chords. Fourth measure: sustained chords.

Additional markings include *8va* in the first measure of the 5 temple blocks and *8va* with a dotted line in the fourth measure of the piano part. A watermark "NB noter" and "This music is copyright protected" is visible across the score. The instruction "(Ped. sempre)" is written below the piano part.

140

Handwritten musical score for Clarinet, Cello, Guitar, 5 temple blocks, and Piano. The score is divided into four measures. The Clarinet and Cello parts feature dynamic markings of *f* and *ff*, with a *gliss.* (glissando) in the second measure of the Cello part. The Guitar part includes a tremolo effect (*trem.*) and dynamic markings of *f*. The 5 temple blocks part also features a tremolo effect and dynamic markings of *f*. The Piano part consists of sustained chords in the right and left hands, with a dynamic marking of *ff*. A large watermark "NB noter" and "This music is copyright protected" is overlaid on the piano part.

(Bra)
 (Ped. sempre)

clar. **f** **ff** tr

'cello **ff** trem. **ff**

guitar **sfz** trem. **ff**

5 temple blocks **f** trem. **ff**

piano **mf** **ff**

(8va)
(Ped. sempre) * Ped.

143

NB noter
This music is copyright protected

1) Attack the chord, then depress the fortepedal as quickly as possible.

145

clar. *ff*

'cello *ff*

guitar

5 temple blocks *ff*

piano

(Ped.) *

Handwritten musical score for five instruments: clarinet, cello, guitar, 5 temple blocks, and piano. The score is divided into four measures, with measure numbers 151 and 155 indicated in boxes.

- clar.:** Measure 151 starts with a whole note $b^{\flat}o$ (B-flat) marked *ff*. A trill (tr) is written above the note. Measure 155 starts with a whole note $\#o$ (C-sharp) marked *ff*. A trill (tr) is written above the note.
- 'cello:** Measure 151 starts with a whole note $\#o$ (C-sharp) marked *ff* and *trem.* (tremolo). Measure 155 starts with a whole note $\#o$ (C-sharp) marked *ff*.
- guitar:** Measure 151 starts with a whole note $\#o$ (C-sharp) marked *ff*. The notes are labeled with *obo* and *cl* (clarinet).
- 5 temple blocks:** Measure 151 starts with a whole note $\#o$ (C-sharp) marked *ff* and *trem.* (tremolo). Measure 155 starts with a whole note $\#o$ (C-sharp) marked *ff*.
- piano:** Measure 151 starts with a whole note $\#o$ (C-sharp) marked *ff*. The notes are labeled with *obo* and *cl* (clarinet).

A large watermark "NB noter" is visible across the score, along with the text "This music is copyright protected".

Handwritten musical score for measures 160-163. The score includes parts for Clarinet (clar.), Cello (cello), Guitar, 5 temple blocks, and Piano (piano). The piano part is divided into three staves. A wavy line at the bottom indicates a pedal effect.

Clarinet (clar.): Treble clef, *ff*. Measures 160-162: *tr* (trill) over a wavy line, with notes *tr* and *tr* indicated. Measure 163: Rest.

Cello (cello): Treble clef, *ff*. Measures 160-162: Notes with *tr* (trill) and *tr* (trill) markings. Measure 163: Rest.

Guitar: Treble clef. Measures 160-162: Rest. Measure 163: Rest.

5 temple blocks: Treble clef, *ff*. Measures 160-162: Notes with *tr* (trill) and *tr* (trill) markings. Measure 163: Rest.

Piano (piano): Three staves. Measure 163: *fff* (fortissimo) in the middle staff, *tr* (trill) in the top staff, and *tr* (trill) in the bottom staff.

Other markings: A box containing the number "160" is located above the clarinet staff. A watermark "NB noter" and "This music is copyright protected" is visible across the piano staves. Pedal markings: "(Ped.)" with a wavy line and "* Ped." with a wavy line are at the bottom.

Handwritten musical score for five instruments: clarinet, cello, guitar, 5 temple blocks, and piano. The score is written on five staves. The clarinet staff has a treble clef and a key signature of one sharp (F#). The cello staff has a treble clef. The guitar staff has a treble clef. The 5 temple blocks staff has a double bar line with repeat dots. The piano staff has a grand staff with two bass clefs. The score includes various musical notations such as rests, notes, accidentals, dynamics (p, sfz), articulation (trém.), and performance instructions (al niente, slowly). A box containing the number '165' is present above the clarinet staff. A watermark 'NB noter' and the text 'This music is copyright protected' are overlaid on the score. A pedal line labeled '(Ped.)' with a wavy line and an asterisk is located below the piano staff.

clar.

cello

guitar

5 temple blocks

piano

165

sfz

trém.

p

al niente

slowly

(Ped.) *

25.

clar. *slowly* 170

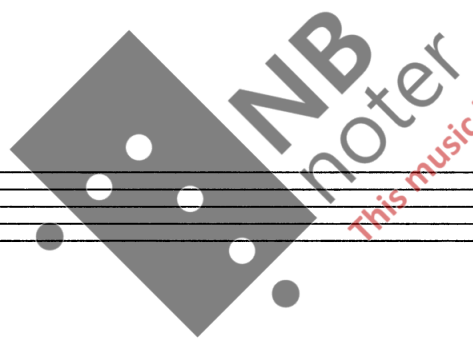
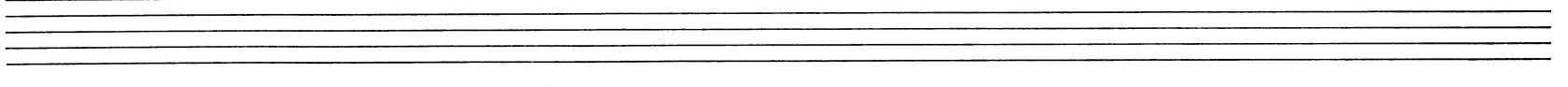
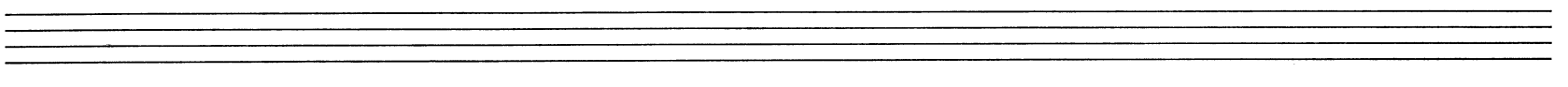
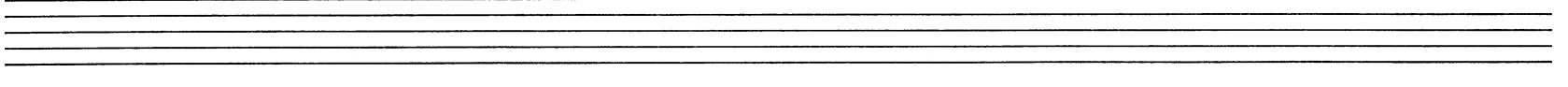
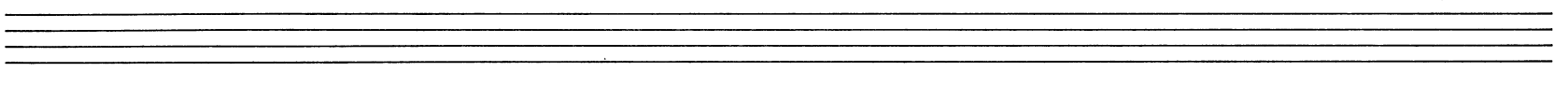
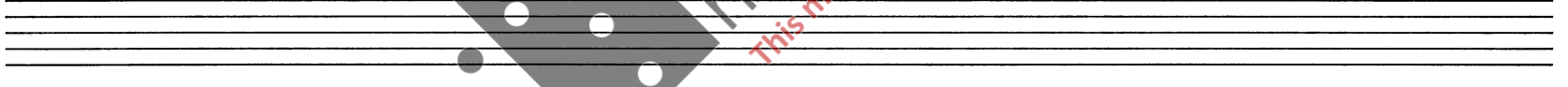
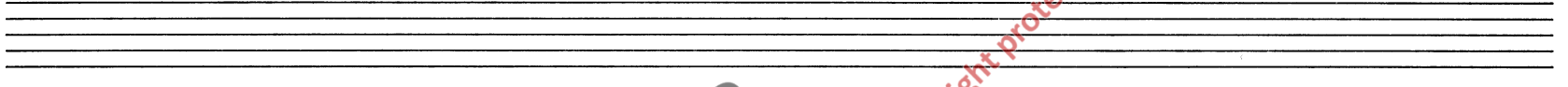
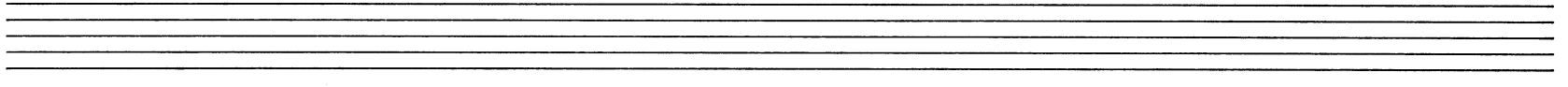
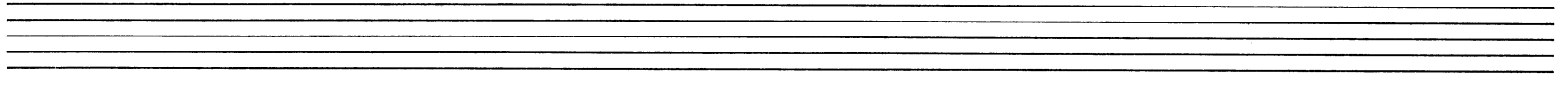
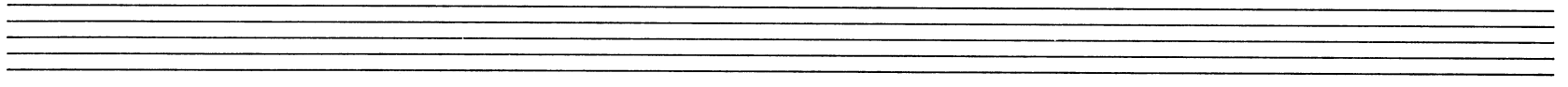
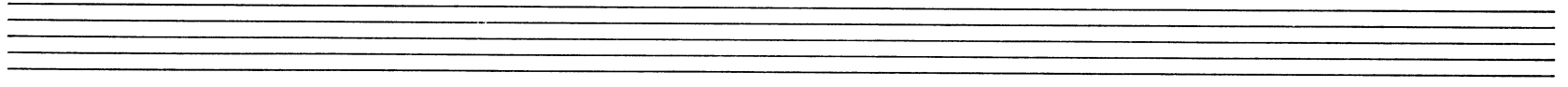
'cello

This musical system contains two staves: Clarinet (clar.) and Cello ('cello). The Clarinet staff begins with a rest, followed by a series of notes (B-flat, A, G, F) with slurs and ties. The Cello staff starts with a rest, then has notes (C, D, E, F, G, A) with slurs and ties. Dynamics include 'p' and 'pp'. The system ends with a double bar line.

clar. 175

'cello

This musical system contains two staves: Clarinet (clar.) and Cello ('cello). The Clarinet staff has a long note (A) with a slur and a 'pp' dynamic. The Cello staff has notes (C, D, E, F, G, A) with slurs and ties, ending with a 'morendo' instruction. A large watermark 'NB noter' is overlaid on the page. The system ends with a double bar line.



This music is copyright protected