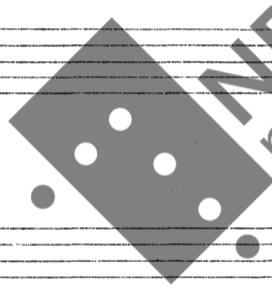


OBO / PIANO

ALT SAX

MAGNE AMDAHL:

» CANTILENE »



NB
noter

This music is copyright protected

FEB. - 73



NC 2



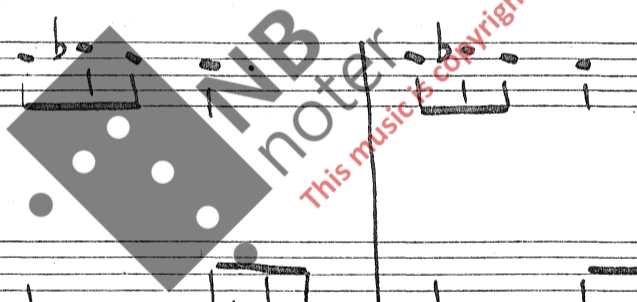
"CANTILENE"

Magna Qd

OBO

KLAV.

Sempre legato



Handwritten musical score, first system. It consists of three staves. The top staff is in treble clef with a 3/4 time signature and contains a melodic line with various accidentals (flats, naturals, sharps) and a dynamic marking of *scerzando*. The middle and bottom staves are in bass clef and contain accompaniment, with some measures marked with a double slash (/) indicating a continuation or a specific performance instruction.

Handwritten musical score, second system. It consists of three staves. The top staff continues the melodic line. The middle and bottom staves continue the accompaniment. A double bar line is present, followed by a change in time signature to 4/4. The top staff has a dynamic marking of *mod.* and *f*. The bottom staff has a dynamic marking of *ff* and a fermata over a note.

Handwritten musical score, third system. It consists of three staves. The top staff continues the melodic line. The middle and bottom staves continue the accompaniment. A large watermark is overlaid on this system, reading "NBI noter" and "This music is copyright protected".

Handwritten musical score, fourth system. It consists of three staves. The top staff continues the melodic line. The middle and bottom staves continue the accompaniment. The system concludes with a final cadence in the top staff.

Handwritten musical notation for the first system, consisting of three staves. The top staff has a treble clef and a key signature of one sharp (F#). The middle and bottom staves have bass clefs. The music includes various note values, rests, and accidentals.

Handwritten musical notation for the second system, consisting of three staves. It features complex rhythmic patterns, including triplets and sixteenth notes, with various accidentals.

Handwritten musical notation for the third system, consisting of three staves. The middle staff has a treble clef and a key signature of one sharp. The bottom staff has a bass clef. The music includes a large watermark "NB noter" and "This music is copyright protected".

Handwritten musical notation for the fourth system, consisting of three staves. The top staff has a treble clef and a time signature of 7/8. The middle and bottom staves have bass clefs. The music includes various note values and accidentals.



NR 2

lua

Handwritten musical notation for the first system, consisting of three staves. The top staff is in treble clef with a 4/4 time signature. The middle and bottom staves are in bass clef. The notation includes various notes, rests, and accidentals. A "rit." marking is present in the second measure of the middle staff. A "b+" symbol is written above the first measure of the top staff.

Handwritten musical notation for the second system, consisting of three staves. The top staff is in treble clef with a 4/4 time signature. The middle and bottom staves are in bass clef. The notation includes various notes, rests, and accidentals. A "mod." marking is present at the beginning of the top staff.

Handwritten musical notation for the third system, consisting of three staves. The top staff is in treble clef with a 4/4 time signature. The middle and bottom staves are in bass clef. The notation includes various notes, rests, and accidentals. A large watermark "NB noter" and "This music is copyright protected" is overlaid on this system.

Handwritten musical notation for the fourth system, consisting of three staves. The top staff is in treble clef with a 4/4 time signature. The middle and bottom staves are in bass clef. The notation includes various notes, rests, and accidentals.

Handwritten musical notation for the first system. It consists of three staves. The top staff is in treble clef and contains a melodic line with eighth and sixteenth notes. The middle staff is in treble clef and contains a chordal accompaniment. The bottom staff is in bass clef and contains a bass line with figured bass notation, including notes like 'bd', 'd', and 'b' with various rhythmic markings.

Handwritten musical notation for the second system. It consists of three staves. The top staff is in treble clef with a melodic line. The middle staff is in treble clef with a chordal accompaniment. The bottom staff is in bass clef with a bass line and figured bass notation, including notes like 'b', 'd', and 'b' with rhythmic markings.

Handwritten musical notation for the third system. It consists of three staves. The top staff is in treble clef with a melodic line. The middle staff is in treble clef with a chordal accompaniment. The bottom staff is in bass clef with a bass line and figured bass notation. A large watermark 'MPB notes' is overlaid on the system, along with the text 'This music is copyright protected'.

Handwritten musical notation for the fourth system. It consists of three staves. The top staff is in treble clef with a melodic line. The middle staff is in treble clef with a chordal accompaniment. The bottom staff is in bass clef with a bass line and figured bass notation. A large watermark 'MPB notes' is overlaid on the system, along with the text 'This music is copyright protected'.

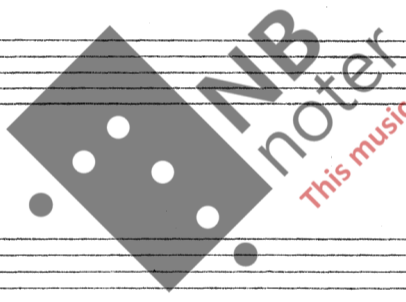
Handwritten musical notation for the first system, consisting of three staves. The top staff is in treble clef, the middle in alto clef, and the bottom in bass clef. It features various notes, rests, and accidentals (flats and naturals).

Handwritten musical notation for the second system, continuing the piece with three staves. It includes complex rhythmic patterns and accidentals.

Handwritten musical notation for the third system, featuring a large watermark 'NB noter' and 'This music is copyright protected'. The notation continues across three staves.

Handwritten musical notation for the fourth system, including a section with a dotted line and a 'rit.' marking. The notation spans three staves.

The image shows three systems of handwritten musical notation. Each system consists of three staves. The top staff in each system uses a treble clef and contains a melodic line with various note values and accidentals. The middle staff uses a bass clef and contains a harmonic or accompaniment line. The bottom staff uses a bass clef and contains figured bass notation, with numbers and symbols (like # and b) indicating fingerings and accidentals. The notation is spread across four measures per system.



This music is copyright protected

ca 4 min

Five empty musical staves are provided at the bottom of the page, each consisting of five horizontal lines.