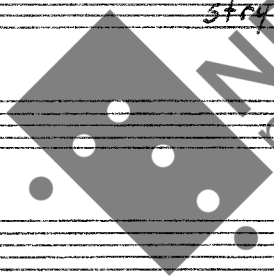


PARTITUR

MAGNE AMOHL:

~ "BAGATELL" for Alto Flöte ~

STANDARDNOTEN

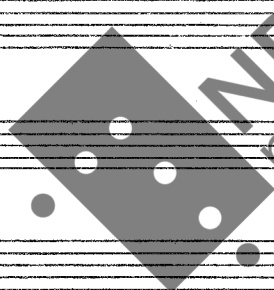


NB  
noter

This music is copyright protected

Nov. - 70

Blank musical staff lines for notation.



*This music is copyright protected*

# BAGATELL

Mag Dahl

for alt-fløyte og ork.

♩ = 160 ca

FLUTE ALTO INC

PIANO

VI

Vla

Cello

Bass

x) GLISS CON DITTA SULLE CORDE IN ULTIMA BASSO *Handig!*  
Pa norsk: gliss over midt- og bassstrengene med hånden. (Forbik!) M.A.

Handwritten musical score for guitar, featuring a guitar icon with the letter 'A' at the top center. The score includes a treble clef staff with a melodic line, a guitar fretboard diagram with fingerings and a 'ped.' (pedal) marking, and a bass clef staff with a bass line. The piece is marked 'A 4/4' at the top right. The bass line includes dynamic markings such as 'pp' (pianissimo) and 'pizz' (pizzicato). The guitar part includes a 'Sim.' (simulazione) marking and a 'p' (piano) dynamic marking. The score is written in a key signature of two flats and a 4/4 time signature.

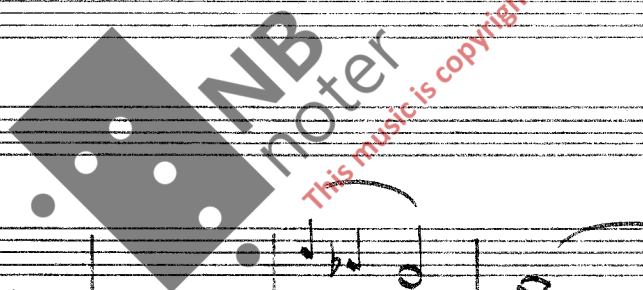
Handwritten musical score for guitar, featuring a large watermark for 'NB Noter' and the text 'This music is copyright protected'. The score includes a treble clef staff with a melodic line, a guitar fretboard diagram with fingerings, and a bass clef staff with a bass line. The piece is marked 'A 4/4' at the top right. The bass line includes dynamic markings such as 'pizz' (pizzicato) and 'vibr.' (vibrato). The guitar part includes a 'Sim.' (simulazione) marking and a 'p' (piano) dynamic marking. The score is written in a key signature of two flats and a 4/4 time signature.

Handwritten musical score for the first system. It consists of seven staves. The top staff is a vocal line with a treble clef and a key signature of two flats. The lower staves are for piano accompaniment, with various clefs and a key signature of two flats. Performance markings include "rit" (ritardando) in the vocal line and piano accompaniment, and "ARCO" (arco) and "P" (piano) in the lower staves.

23  
B

$\text{♩} = 92 \text{ ca.}$

Handwritten musical score for the second system, starting with a section marked "B". It features a vocal line and piano accompaniment. The tempo is marked as  $\text{♩} = 92 \text{ ca.}$ . Performance markings include "ped." (pedal), "ppp" (pianissimo), "sen. basso" (senza basso), "p" (piano), and "pizz" (pizzicato). The score includes various musical notations such as notes, rests, and dynamic markings.



Handwritten musical score for the first system. The score consists of seven staves. The top staff contains a melodic line with a fermata. The second staff has a bass line with a fermata and a 'ped - x' marking. The third staff includes a 'tacet' marking. The fourth staff has a 'ped - x' marking. The fifth staff has a 'Legato sempre' instruction. The sixth staff has an 'Alco' marking. The seventh staff has a 'pizz' marking. The score is written in a key signature of two flats and a 3/4 time signature.

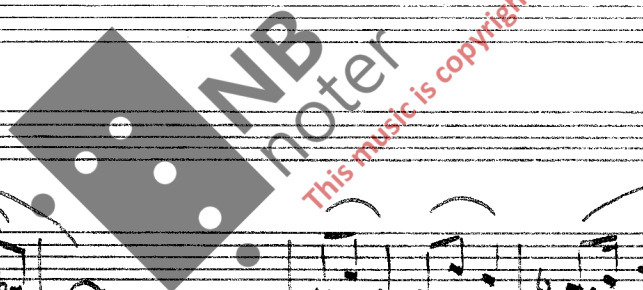
Handwritten musical score for the second system. The score consists of seven staves. The first staff has a 'cresc. sempre' marking. The second staff has a 'cresc. sempre' marking. The third staff has a 'cresc. sempre' marking. The fourth staff has a 'cresc. sempre' marking. The fifth staff has a 'cresc. sempre' marking. The sixth staff has a 'cresc. sempre' marking. The seventh staff has a 'cresc. sempre' marking. The score is written in a key signature of two flats and a 3/4 time signature. There are various performance markings such as 'rit.', 'p', and 'f' throughout the system.



Nº 5

7  
Tpo II<sup>da</sup>

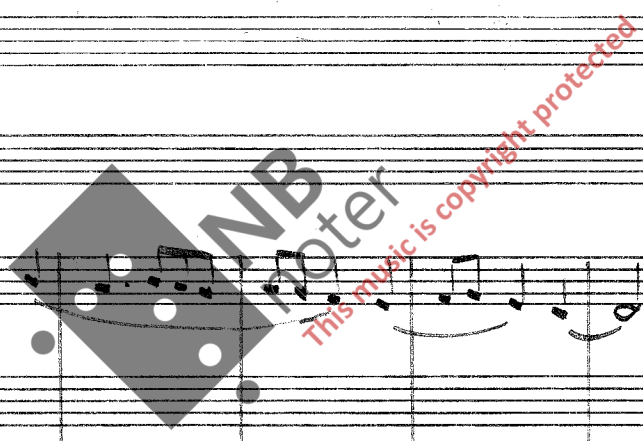
Handwritten musical score for Tpo II<sup>da</sup>, measures 7-10. The score includes staves for strings and woodwinds. Dynamics include rit, mf, accell, and molto. Performance markings include p, pizz, and Div.



Handwritten musical score, measures 11-14. The score includes staves for strings and woodwinds. Dynamics include rit, pp, and mf. Performance markings include 8va, ped, arco, and solo.

Handwritten musical score for the first system. It consists of seven staves. The top staff is a vocal line with lyrics "NON PED!" and markings "rit" and "p". The second staff contains piano accompaniment with markings "f" and "pp". The third and fourth staves are empty. The fifth staff is a solo line with markings "SOLO", "rit", and "p". The sixth and seventh staves are piano accompaniment with markings "SOLO" and "p". The system concludes with a double bar line and a 3/4 time signature.

Handwritten musical score for the second system. It consists of seven staves. The top staff is a vocal line with notes and rests. The second staff contains piano accompaniment with notes and rests. The third and fourth staves are empty. The fifth staff contains piano accompaniment with notes and rests. The sixth and seventh staves are piano accompaniment with notes and rests. The system concludes with a double bar line and a 3/4 time signature.



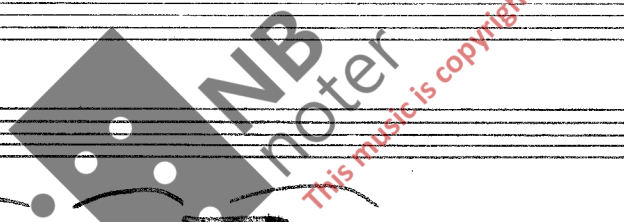




Tpo II da

Handwritten musical score for the first system, featuring multiple staves with notes, rests, and dynamic markings such as *p*, *f*, and *arco*.

||



Handwritten musical score for the second system, including staves with notes, rests, and performance instructions like *legato*, *ped*, *SOLO*, and *Tutti*.

MOLTO VIBRATO

VIB. MOLTO

Handwritten musical score for the first system. It includes a piano part (top staff) and violin/cello parts (middle and bottom staves). The piano part features a melodic line with vibrato markings. The violin and cello parts play accompaniment with various textures. Performance instructions include "MOLTO VIBRATO" and "VIB. MOLTO" with wavy lines underneath. Other markings include "ARP. LENT.", "ped", "legato", and "poco cresc.". The system concludes with a fermata over a chord in the piano part and a dynamic marking of "f" in the violin/cello parts.

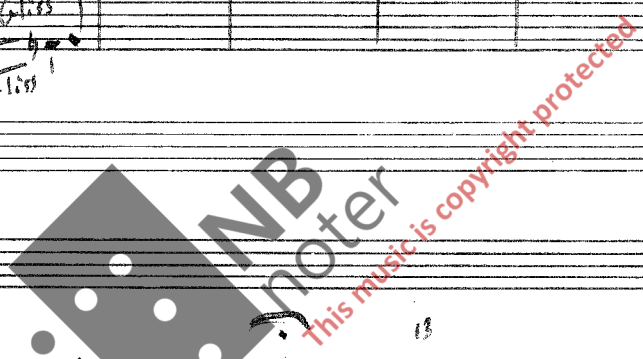
Handwritten musical score for the second system. It continues the piano, violin, and cello parts. The piano part starts with a dynamic marking of "ppp" and includes instructions for "accell/cresc." and "rit/dim.". The violin and cello parts have various textures, including tremolos and sustained notes. Performance instructions include "accell/cresc.", "rit/dim.", and "div.". The system concludes with a fermata over a chord in the piano part and a dynamic marking of "f" in the violin/cello parts.

Handwritten musical score for a multi-instrument ensemble. The score includes the following elements:

- Lyrics:** "Lasc. som. Come Ima" and "Div. gliss".
- Performance Markings:** "rit.", "ppp", "Solo", "Tutti", and "rit." repeated for various instruments.
- Instrumentation:** Multiple staves for different instruments, including woodwinds, strings, and percussion.
- Notation:** Includes notes, rests, and dynamic markings such as "ppp" and "rit.".

Handwritten musical score for a multi-instrument ensemble, continuing from the previous page. The score includes the following elements:

- Lyrics:** "Come Ima".
- Performance Markings:** "rit molto", "pp", "Tutti", and "ppp".
- Instrumentation:** Multiple staves for different instruments, including woodwinds, strings, and percussion.
- Notation:** Includes notes, rests, and dynamic markings such as "pp", "ppp", and "rit molto".



BALATÉLL for Alto Saxophone 1st Year Orchestra or Flute

