

MAGNAR ÅM

står og plystrar  
/ stands whistling

*14. sats fra operaen «Kimen», basert på en  
roman av Tarjei Vesaas*

solister, kor og strykeorkester

*Operaen er bestilt av Telemark Kammerorkester og Musikteatret SAUM, med støtte frå Det Norske Komponistfond, Norsk Kulturråd og Fritt Ord.*

The opera is commissioned by Telemark Chamber Orchestra and Musikteatret SAUM, with support from The Norwegian Composers' Fund, Arts Council Norway and Fritt Ord.

*Dei ulike satsane i operaen kan også brukast som frittståande konsertstykke, med eller utan songsolistar og kor.*

The different movements of the opera may also be used as independent concert pieces, with or without song soloists and choir.

*Songsolostemmene er dobla av orkesteret gjennom heile operaen. Men under framføringar med songsolistar kan ein sløyfe dei instrumentaldoblingane ein vil.*

The song-soloist parts are doubled by the orchestra throughout the opera. But when performed with song-soloists the instrumental doublings may be omitted whenever appropriate.

Roles/Soloists:

Rolv Li: Tenor/Barytone (movements 5, 9, 11, 12, 13, 14, 15, 16, 20, 21, 24)

Karl Li: Barytone/Bass (movements 8, 11, 13, 15, 17, 20, 21, 22)

Andreas Vest: Tenor/Barytone (movements 1, 2, 3, 4, 7, 11)

Inga Li: Soprano (movements 6, 7, 8, 17, 18, 21)

Kari Nes: Mezzosoprano (movements 8, 15, 16, 17)

Mari Li: Alto/Mezzosoprano (movements 13, 15, 20)

Gudrun: Soprano (movements 6, 11, 21)

Else: Soprano (movements 5, 14)

Mann (Man): Tenor/Barytone (movements 10, 11, 12, 20, 21)

Kvinne (Woman): Mezzosoprano (movements 10, 12, 23)

Jente (Girl): Soprano (movement 4)

Haug: Barytone (movement 19)

Dal: Barytone (movement 19)

Mixed Choir (SATB)

String Orchestra (minimum 11111, but preferably 22221 or more)

14: står og plystrar/stands whistling

607

$\text{♩} = 65$

S  
A  
T  
B

det.

*p*

Gud - skje - lov.

*p*

Rolv:  
Whistled  
*mf*

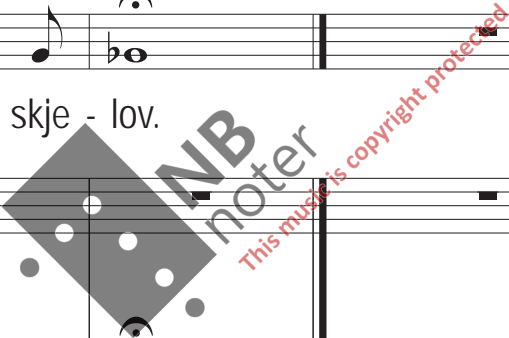
607

Vln. I  
Vln. II  
Vla.  
Vc.  
D.B.

*pp*

*pp*

Whistled  
*mf*



Elses: *mf*

611

611

Soprano: Kjæ - ras - ten min står og

Alto: [Rest]

Tenor: [Rest]

Bass: [Rest]

611

611

Violin I: [Rest]

Violin II: [Musical notation]

Viola: *pp* [Musical notation] *mf* [Triplet]

Violoncello: [Triplet]

Double Bass: [Rest]

614

plyst - rar.

614

617

3 3 >

Kjæ-ras-ten min er ein draps - mann.

S  
A  
T  
B

617

Vln. I  
Vln. II  
Vla.  
Vc.  
D.B.

*p*  
*pp*  
*pp*  
*p*  
*mf*  
*p*

*p*

621

Whistled

*mf*

S

A

T

B

621

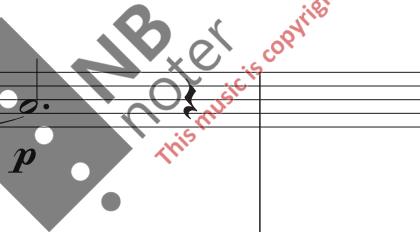
Vln. I

Vln. II

Vla.

Vc.

D.B.



♩ = 70

625

Sung:

*f* Eg styg-gest ved han.

S  
A  
T  
B

Detailed description: This block contains the vocal and piano accompaniment for measures 625-627. The vocal line (Sung) begins at measure 625 with a melodic phrase in G major, marked *f*. The piano accompaniment consists of five staves: S (Soprano), A (Alto), T (Tenor), and B (Bass) vocal parts, and a piano part. The piano part features a simple harmonic accompaniment with a bass line in the left hand and a treble line in the right hand. The key signature is one sharp (F#) and the time signature is 3/4. A watermark 'NB noter' is visible over the piano part.

625

Vln. I  
Vln. II  
Vla.  
Vc.  
D.B.

Detailed description: This block contains the instrumental staves for measures 625-627. The staves are for Violin I (Vln. I), Violin II (Vln. II), Viola (Vla.), Violoncello (Vc.), and Double Bass (D.B.). The Violin I and II parts play a sustained note in the first two measures, then move to a melodic phrase in the third measure, marked *f*. The Viola part plays a sustained note in the first two measures, then moves to a melodic phrase in the third measure. The Violoncello part plays a melodic phrase in the first two measures, then moves to a sustained note in the third measure, marked *f*. The Double Bass part plays a sustained note in the first two measures, then moves to a melodic phrase in the third measure. The key signature is one sharp (F#) and the time signature is 3/4. A watermark 'NB noter' is visible over the Violin I staff.



628

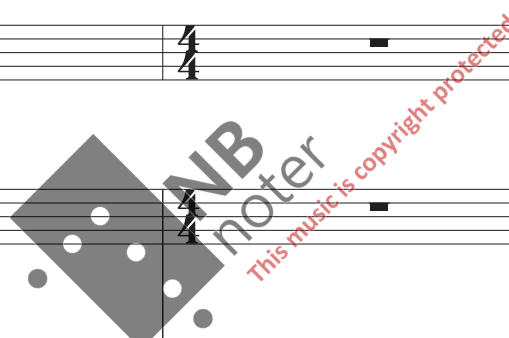
Sung: *f* Eg slepp deg ik - kje. *mf* Sjø så då. No slep-per eg deg.

Soprano (S), Alto (A), Tenor (T), Bass (B)

628

Vln. I, Vln. II, Vla., Vc., D.B.

*f* *mf* *mp*



631 *mp* ♩ = 60

Det kvel-dar, så un-der-leg stilt. lk-kje

Spring då.

S

A

T

B

631

Vln. I *mp*

Vln. II *p*

Vla. *f*

Vc. *p*

D.B. *p*

634

vind. Ik-kje ljod. *mf* *p*

Ser du ik-kje at eg lon-ge har sleppt deg!

S

A

T

B

Detailed description: This block contains the vocal staves for Soprano (S), Alto (A), Tenor (T), and Bass (B). The Soprano part has two lines of lyrics. The first line is 'vind. Ik-kje ljod.' with a dynamic marking of *mf*. The second line is 'Ser du ik-kje at eg lon-ge har sleppt deg!' with a dynamic marking of *p*. There are trills and triplets in the vocal lines. The other vocal parts (A, T, B) are currently silent, indicated by rests.

634

Vln. I *pp* *mp*

Vln. II *pp* *p*

Vla. *pp* *p*

Vc. *pp* *mf* *p*

D.B. *p*

Detailed description: This block contains the instrumental staves for Violin I (Vln. I), Violin II (Vln. II), Viola (Vla.), Violoncello (Vc.), and Double Bass (D.B.). Vln. I starts with a trill and triplet, then moves to a melodic line with dynamics *pp* and *mp*. Vln. II has a long note with dynamics *pp* and *p*. Vla. has a long note with dynamics *pp* and *p*. Vc. has a melodic line with dynamics *pp*, *mf*, and *p*, including a triplet. D.B. has a long note with dynamic *p*. A large watermark 'NB noter' and 'This music is copyright protected' is overlaid on the score.

638

Soprano (S): Rests in measures 1-2, fermata and dotted quarter note in measure 3. Dynamics: *pp*, Det.

Alto (A): Rests in measures 1-2, fermata and dotted quarter note in measure 3. Dynamics: *pp*, Det.

Tenor (T): Rests in measures 1-2, fermata and dotted quarter note in measure 3. Dynamics: *pp*, Det.

Bass (B): Rests in measures 1-2, fermata and dotted quarter note in measure 3. Dynamics: *pp*, Det.

638

Vln. I: Melodic line starting with a sharp sign. Dynamics: *pp*.

Vln. II: Sustained note with dynamics *pp* and *ppp*.

Vla.: Sustained note with dynamics *pp* and *pp*.

Vc.: Sustained note with dynamics *pp*.

D.B.: Sustained note with dynamics *pp* and *pp*.

Watermark: NB noter. This music is copyright protected.