

PER HJORT ALBERTSEN:

OP. 22

1960

# NOTTURNO E DANZA

FOR ORKESTER



PARTITUR

NOTTURNO : 1·1·1·1·2·0·0·0· STRINGS  
DANZA : 2·2·2·2·2·2·2·1· TIMP. TRIANG  
XYL. TAMB. PIAT.  
GR. CAS. STRINGS

NOTTURNO  
"HOMAGE TO VAUGHAN WILLIAMS"  
ANDANTE CALMATO

Musical score for Flute, Oboe, Clarinet (B), Bassoon, Horns (F), Violins I & II, Viola, Violoncelli, Contrabassi, and Piano.

The score is divided into two systems. The first system includes Flute, Oboe, Clarinet (B), Bassoon, Horns (F), Violins I & II, Viola, Violoncelli, and Contrabassi. The second system includes Flute, Oboe, Clarinet, Bassoon, Horns, Violins I & II, Viola, Violoncelli, and Contrabassi.

Key features include:

- Flute: Melodic line with triplets and a first ending bracket.
- Violoncelli: Melodic line with triplets and a first ending bracket.
- Piano: Accompanying figures in the right hand and a melodic line in the left hand.
- Tempo: ANDANTE CALMATO.
- Dynamic markings: pp, p, v.
- Rehearsal marks: 1, 7.
- Watermark: "NB noteri This music is copyright protected".

Handwritten musical score for a symphony orchestra. The score is divided into two systems, with measures 13 and 19 marked. The instruments listed are Flute (Fl), Oboe (Ob), Clarinet (Cl), Bassoon (Fg), Horns (C I, C II), Violins (Vc I, Vc II), Violas (Vc), Cellos (Cb), and Double Bass (Fg). The score includes dynamic markings such as *solo*, *mf*, *cresc*, *mp*, *p*, *pp*, and *pizz*. It also features performance instructions like *A*, *B*, and *a 2*. A large watermark "MPeter" is visible across the center of the page.

Handwritten musical score for measures 24-28. The score includes staves for Flute (Fl), Oboe (Ob), Clarinet (Cl), Bassoon (Fg), Cello/Double Bass (C<sup>I</sup>/C<sup>II</sup>), Violin I (V<sup>I</sup>), Violin II (V<sup>II</sup>), Viola (Va), Violoncello (Vc), and Contrabass (Cb). The music features various dynamics such as *mf* and *p*, and includes performance instructions like *pizz* and *cant*. A large watermark is present across the page.

Handwritten musical score for measures 29-33. The score includes staves for Flute (Fl), Oboe (Ob), Clarinet (Cl), Bassoon (Fg), Cello/Double Bass (C<sup>I</sup>/C<sup>II</sup>), Violin I (V<sup>I</sup>), Violin II (V<sup>II</sup>), Viola (Va), Violoncello (Vc), and Contrabass (Cb). The music features various dynamics such as *f*, *mf*, and *p*, and includes performance instructions like *arco*, *pizz*, and *sub*. A large watermark is present across the page.



Handwritten musical score for a symphony, featuring woodwinds, strings, and brass instruments. The score includes dynamic markings such as *mf*, *f*, *cresc*, and *ff*, and performance instructions like *pimp* and *a piacere*. The score is divided into two systems, with measures 35 and 41 marked. The instruments listed on the left are Flute (Fl), Oboe (Ob), Clarinet (Cl), Bassoon (Fg), Horn I (C I), Horn II (C II), Violin I (Vc I), Violin II (Vc II), Viola (Vla), Violoncello (Vcl), Contrabass (Cb), and Fagotto (Fc). The notation includes various note values, rests, and articulation marks.



Flute (Fl) *mf*

Oboe (Ob) *mf*

Clarinet (Cl) *mp*

Bassoon (Fg) *mp*

Cor Anglais (C) *mp*

Violin I (Vl I) *p*

Violin II (Vl II) *mp*

Viola (Vla) *mp*

Violoncello (Vlc) *mp*

Contrabass (Cb) *mp*

Flute (Fl) *mp*

Oboe (Ob) *mp*

Clarinet (Cl)

Bassoon (Fg)

Cor Anglais (C)

Violin I (Vl I)

Violin II (Vl II)

Viola (Vla)

Violoncello (Vlc)

Contrabass (Cb)

This musical score page contains measures 62 through 67. The instruments are arranged as follows:

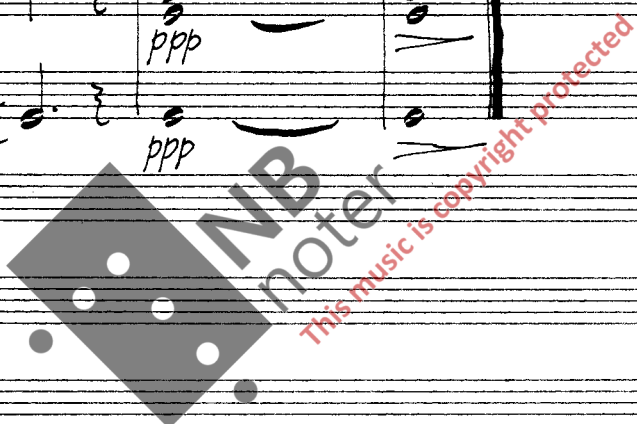
- Flute (Fl)
- Oboe (Ob)
- Clarinet in E-flat (Cl)
- Bassoon (Fg)
- Contra Bassoon (Cb)
- Violin I (Vc I)
- Violin II (Vc II)
- Viola (Vcl)
- Cello (Vcl)
- Double Bass (Cb)

Measure 62 is marked with a circled 'F' and a dynamic of *mf*. Measure 63 features dynamics of *f* and *pp*. Measure 64 includes dynamics of *p* and *f*. Measure 65 has a dynamic of *p*. Measure 66 includes dynamics of *p* and *mf*. Measure 67 is marked with a circled 'F' and a dynamic of *mf*. The score includes various musical notations such as slurs, accents, and dynamic markings.



Handwritten musical score for a symphony orchestra. The score is divided into two systems. The first system includes parts for Flute (Fl), Oboe (Ob), Clarinet (Cl), Bassoon (Fg), Cello/Contrabass (C<sup>I</sup>/C<sup>II</sup>), Violin I (Vc I), Violin II (Vc II), Viola (Vc), Violoncello (Vc), and Contrabass (Cb). The second system includes parts for Flute (Fl), Oboe (Ob), Clarinet (Cl), Bassoon (Fg), Cello/Contrabass (C<sup>I</sup>/C<sup>II</sup>), Violin I (Vc I), Violin II (Vc II), Viola (Vc), Violoncello (Vc), and Contrabass (Cb). The score features various musical notations, including notes, rests, and dynamic markings such as *mp*, *p*, and *pp*. Performance instructions like *uniso.* and *mp, cant* are present. A large watermark "MB notet" is overlaid on the score, along with the text "This music is copyright protected".

Handwritten musical score for a string quartet and woodwinds. The score includes staves for Flute (Fl), Oboe (Ob), Clarinet (Cl), Bassoon (Fg), Horn I (C I), Horn II (C II), Violin I (Vc I), Violin II (Vc II), Viola (Vc), Cello (Vc), and Contrabass (Cb). The music is in 5/4 time and features dynamic markings such as *pp di lontano*, *ppp*, and *ppp sw.*. A rehearsal mark **85** is present at the beginning of the Cb staff. The score concludes with a double bar line.



# DANZA

**1** ALLEGRETTO

FLAUTO I-II

OBOE I-II

CLARINETTO I-II  
(in B)

FAGOTTO I-II  
*mp*

ALLEGRETTO

CORNO I  
in F

CORNO II

TROMBA I

TROMBA II

TROMBONE I-II

TUBA

ALLEGRETTO

TIMPANI d e G

TRIANGOLO

XYLOPHON

TAMB. RUL.

PIATTI

GRAN CASSA

ALLEGRETTO

VIOLINO

VIOLA

VIOLONCELLO

CONTRABASSO

**1**

7

**A**

Fl

Ob

Cl

Fg

**A**

C

Tr

Trb

Tb

Tp

**A**

Vc I

Vc II

Vca

Vcb

Cb

7

*NB noter*  
The music is copyright protected



14

Fl

Ob

Cl

Fg

C

Tr

Trb

Tb

Tp

I

Ve

II

Vla

Vcl

Cb

14

NB noter  
This music is copyright protected





33

Fl

Ob

Cl

Fg

I

C

II

I

Tr

II

Trp

Tb

Tpc

p

mf

I

Vc

II

Vcl

Vcl

Cb

33



40

D

Handwritten musical score for a symphony orchestra. The score is arranged in systems. The top system includes Flute (Fl), Oboe (Ob), Clarinet (Cl), and Bassoon (Fg). The second system includes Violin I (I), Violin II (II), Viola (Vla), and Violoncello (Vcl). The third system includes Trumpet I (Tr I), Trumpet II (Tr II), Horn in B-flat (Fg), and Trombone (Tb). The fourth system includes Trombone (Tb), Tambourine (TAMB.), and Cymbals (PIATTI CR. C.). The bottom system includes Violin I (I), Violin II (II), Viola (Vla), Violoncello (Vcl), and Double Bass (Cb). The score features various musical notations including notes, rests, and dynamic markings such as *mf*, *f*, *ff*, *p*, and *mf*. There are also performance instructions like *arco* and *arco.* A large watermark reading "NB noter This music is copyright protected" is overlaid on the score.

40



51

Fl  
Ob  
Cl  
Fg I  
Fg II

I  
C  
II

I  
Tr  
II  
Ttrb  
Tb

Tp  
Tamb.

I  
Vc  
II  
Vca  
Vcl  
Cb

51





64

Fl  
Ob  
Cl  
Fg  
C  
Tr I  
Tr II  
Tb  
Tb  
Pti  
Vc I  
Vc II  
Vca  
Vcc  
Cb

64

70

**G**

Fe

Ob

Ce

Fg

**G**

I

C

II

I

Tr

II

Trc

Tb

Tp

**G**

I

Vi

II

Vla

Vcl

Cb

70

NB noter  
This music is copyright protected

76

Fe

Ob

Cl

Fg

H

I

C

II

I

Tr

II

Tc

Tb

H

Tr

I

II

Vla

Vcl

Cb

76





91

Fe

Ob

Cl

Fg

I

C

II

I

Tr

II

Tre

Tb

xylo.

Tp

Vla

Vcl

Cb

91

*simile*

*cresc.*

*f marc.*

*cresc.*

*f marc.*

*a2 pesante*

*pesante*

*mf*

*cresc.*

*f*

*cresc.*

*cresc.*

*div ff pesante*

*ff pesante*

97

Fe

Ob

Cl

Fg

I

C

II

Tr

I

II

Trc

Tb

Xyl.

Tp

*tr*

*mf cresc molto*

I

II

Vc

Vcl

Cb

97

103

**K** *con tutta forza*

Fl

Ob *con tutta forza*

Cl *con tutta forza*

Fg *con tutta forza*

**K**

I *con tutta forza*

II *con tutta forza*

I *con tutta forza*

II *con tutta forza*

Tr *con tutta forza*

Tre *con tutta forza*

Tb

xyl.

Tp

pti  
Gr.C. *pp*

*con tutta forza*

*alff*

*ctf*

*con tutta forza*

103



Handwritten musical score for a symphony orchestra, page 27. The score is written in 3/4 time and features a variety of instruments. The woodwind section includes Flute (Fl), Oboe (Ob), Clarinet (Cl), Bassoon (Fg), and Cor Anglais (C). The brass section includes Trumpets (I, II), Trombones (Trc, Tb), and Tuba (Tub.). The percussion section includes Tom-toms (Tomb.), Snare Drum (Tb), and Cymbals (Ptti). The string section includes Violins (I, II), Viola (Vla), Violoncello (Vlc), and Double Bass (Cb). The score is marked with dynamics such as *p*, *mp*, *f*, and *ff*. A large watermark "IMB noter" is visible across the center of the page, with the text "This music is copyright protected" written diagonally across it. The page number "- 27 -" is located at the bottom center.