

TORSTEIN AAGAARD-NILSEN

**Concerto for
Tuba and Orchestra**

“The Cry of Fenrir”

Tuba og orkester





Torstein Aagaard-Nilsen

Concerto for Tuba and Orchestra
«The Cry of Fenrir»



Concerto for Tuba and Orchestra was commissioned by Frode Amundsen with support from The Norwegian Composers' Fund.

*First performance at the Norwegian Academy of Music, Lindemannsalen
Soloist: Frode Amundsen, conductor: Bjørn Sagstad*

*New version first performed 25-04-2003 in Olavshallen, Trondheim
Soloist: Frode Amundsen, Trondheim SO, conductor: Gregor Bühl*

*Final version performed in Malmö 2004, with Frode Amundsen, Malmö SO, conductor: Cristoph König
Recorded by Eirik Gjerdevik: http://www.lawo.no/lwc/lawo_classics_lwc1039_eng.htm*

Instrumentation:

2 Flutes (also Piccolo)
2 Oboes
Clarinet in Bb
Bass Clarinet in Bb
Bassoon
Double Bassoon
4 Horns in F
2 Trumpets in C
2 Trombones
Bass Trombone

Percussion (2)

Percussion 1: Marimba, Xylophone, Glockenspiel, Tubular bells, Bass Drum
Percussion 2: Timpani, 5 Temple blocks, Cymbal, Metal chimes (= wind chimes made of metal)

Solo Tuba

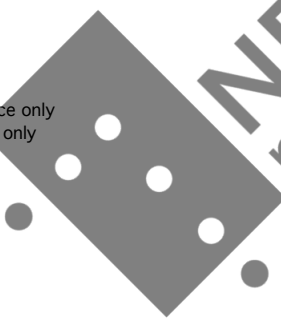
Strings (min. 6-6-4-4-2)

Specifications:

All trills should span a minor second
Metronome-markings are for guidance only
Accidentals apply to written octave only

The score is transposed

Duration: ca. 15'



This music is copyright protected

To Frode Amundsen
Concerto for Tuba and Orchestra
"The Cry of Fenrir"

Torstein Aagaard-Nilsen
1997_rev2002/2004

Moderato risoluto, (♩ = 88)

Flute 1
Flute 2
Oboe 1
Oboe 2
Clarinet in Bb
Bass Clarinet in Bb
Bassoon
Double Bassoon

Hom 1/3 in F
Hom 2/4 in F
Trumpet 1/2 in C
Trombone 1/2
Bass Trombone

Percussion 1
Percussion 2
Solo Tuba

Bass dr. (light timp. sticks)
Timp.
ff (hard st.)

mf
f
mf *mp* *pp*
f

Moderato risoluto, (♩ = 88)

Vln. I
Vln. II
Vln. I
Vln. II
Viola
Cello
D.B.

ff *f* *mf* *mp*
ff *f* *mf* *mp*
ff *f* *mf* *mp*
ff *f* *mf* *mp*
ff
ff
ff

pizz. *ff* *f* *mf* *mp*
arco
arco
arco
arco
arco

9

A

Fl. 1

Fl. 2

Ob. 1

Ob. 2

Cl. in Bb

Bass Cl. in Bb

Bsn.

D. Bsn.

Fl. 2 has time signature changes to 3/4, 5/4, and 3/4.

Cl. in Bb has a dynamic marking of *mf*.

Hn. 1/3 in F

Hn. 2/4 in F

Tpt. 1/2

Tbn. 1/2

Bass Tbn.

Hn. 1/3 in F starts with *pp* and has dynamics *p*, *3rd:*, *f diminuendo*, and *f*.

Hn. 2/4 in F starts with *pp* and has dynamics *p*, *2nd:*, *4th:*, *f*, and *f diminuendo*.

Tpt. 1/2 has dynamics *1st:*, *p*, *2nd:*, *f*, and *f diminuendo*.

Tbn. 1/2 has dynamics *1st:*, *p*, *2nd:*, *f*, and *f diminuendo*.

Bass Tbn. has dynamics *p* and *f diminuendo*.

Perc. 1

Perc. 2

Solo Tuba

Perc. 1 and 2 have dynamics *p* and *f*.

Solo Tuba has a dynamic marking of *f* and includes complex rhythmic patterns.

9

A

Vln. I

Vln. II

Vln. I

Vln. II

Vla. I

Vla. II

Vcl. I

Vcl. II

D.B.

String section includes dynamics *ff*, *mf*, *ff*, *mf*, *ff*, *p*, *ff*, and *f*.

Violins have *spicc.* and *pizz.* markings.

Violas and double basses have *arco* and *pizz.* markings.

Time signature changes to 3/4, 5/4, and 3/4.

Fl. 1

Fl. 2

Ob. 1

Ob. 2

Cl. in Bb

Bass Cl. in Bb

Bsn.

D. Bsn.

Hn. 1/3 in F

Hn. 2/4 in F

Tpt. 1/2

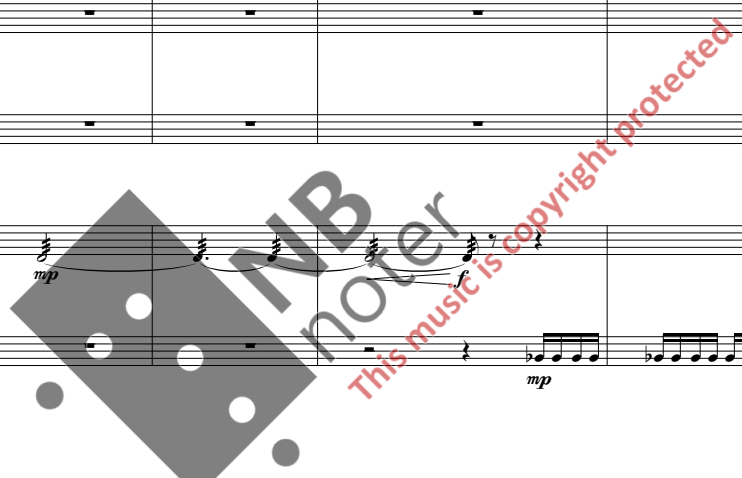
Tbn. 1/2

Bass Tbn.

Perc. 1

Perc. 2

Solo Tuba



16

Vln. I

Vln. II

Vln. 1

Vln. 2

Vla. I

Vla. II

Vcl. I

Vcl. II

D.B.

Fl. 1

Fl. 2

Ob. 1

Ob. 2

Cl. in Bb

Bass Cl. in Bb

Bsn.

D. Bsn.

Hn. 1/3 in F

Hn. 2/4 in F

Tpt. 1/2

Tbn. 1/2

Bass Tbn.

Perc. 1

Perc. 2

Solo Tuba

Vln. I

Vln. II

Vln. 1

Vln. 2

Vla. I

Vla. II

Vcl. I

Vcl. II

D.B.

Fl. 1

Fl. 2

Ob. 1

Ob. 2

Cl. in Bb

Bass Cl. in Bb

Bsn.

D. Bsn.

Hn. 1/3 in F

Hn. 2/4 in F

Tpt. 1/2

Tbn. 1/2

Bass Tbn.

Perc. 1

Perc. 2

Solo Tuba

All trills: a minor second

pp

mf

pp legato

mf gliss. lento

mp

f

Vln. I

Vln. II

Vln. 1

Vln. 2

Vla. I

Vla. II

Vcl. I

Vcl. II

D.B.

ff

f

mf

arco

f

spicc.

f

mf

mp

p

All trills: a minor second

mp

ppp

mf

Fl. 1

Fl. 2

Ob. 1

Ob. 2

Cl. in Bb

Bass Cl. in Bb

Bsn.

D. Bsn.

Hn. 1/3 in F

Hn. 2/4 in F

Tpt. 1/2

Tbn. 1/2

Bass Tbn.

Perc. 1

Perc. 2

Solo Tuba

37

Vln. I

Vln. II

Vln. I

Vln. II

Vla. I

Vla. II

Vcl. I

Vcl. II

D.B.

D

Fl. 1 *p* All trills: a minor second

Fl. 2 *p*

Ob. 1 *p* All trills: a minor second

Ob. 2 *p* All trills: a minor second

Cl.in Bb *p*

Bass Cl. in Bb *p*

Bsn. *p*

D. Bsn.

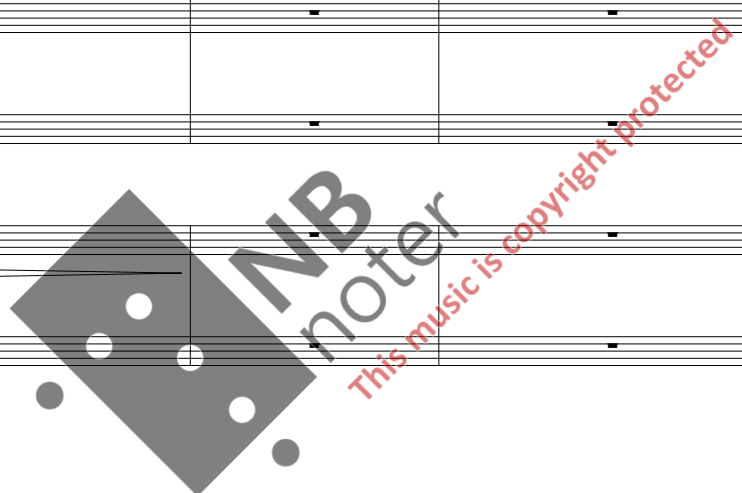
Hn. 1/3 in F

Hn. 2/4 in F

Tpt. 1/2

Tbn. 1/2

Bass Tbn.



Perc. 1 *p*

Perc. 2 *ppp*

Solo Tuba *p*

Vln. I *pp* Con sord. arco *p*

Vln. II *pp* Con sord. arco *p*

Vln. 2 I *pp* Con sord. arco *p*

Vln. 2 II *pp* Con sord. arco *p*

Vla. I *pp* Con sord. arco

Vla. II *pp* Con sord. arco Senza sord. pizz. *mf*

Vcl. I *p* arco *mf* pizz. *mf*

Vcl. II *p* arco *mf* pizz. *mf*

D.B. *p* arco

E Allegro mod. e destinto, (♩=104)

Fl. 1

Fl. 2

Ob. 1

Ob. 2

Cl. in Bb

Bass Cl. in Bb

Bsn.

D. Bsn.

Hn. 1/3 in F

Hn. 2/4 in F

Tpt. 1/2

Tbn. 1/2

Bass Tbn.

Perc. 1

Perc. 2

Solo Tuba

E Allegro mod. e destinto, (♩=104)

Vln. I

Vln. II

Vln. 1

Vln. 2

Vla.

Vcl.

D.B.

Fl. 1 *mp*

Fl. 2 *p*

Ob. 1 *p*

Ob. 2 *p*

Cl. in Bb

Bass Cl. in Bb *p*

Bsn. *p*

D. Bsn.

Hn. 1/3 in F

Hn. 2/4 in F

Tpt. 1/2

Tbn. 1/2

Bass Tbn.

Perc. 1

Perc. 2

Solo Tuba

56

Vln. I *pp* *Senza sord.*

Vln. II *pp* *Senza sord.*

Vln. I *pp* *Senza sord.*

Vln. II *pp* *Senza sord.*

Vla. I *pp* *Senza sord.*

Vla. II *pp* *Senza sord.*

Vcl. I *f*

Vcl. II *f*

D.B.

62

[F]

Fl. 1

Fl. 2

Ob. 1

Ob. 2

Cl. in Bb

Bass Cl. in Bb

Bsn.

D. Bsn.

Hr. 1/3 in F

Hr. 2/4 in F

Tpt. 1/2

Tbn. 1/2

Bass Tbn.

Perc. 1

Perc. 2

MARIMBA

Solo Tuba

[F]

Vln. I

Vln. II

Vln. 1

Vln. 2

Vla. I

Vla. II

Vcl. I

Vcl. II

D.B.

62

pp

f

pp

f

pp

f

pp

f

pp

f

pp

f

pp

f

pp

f

pp

f

Fl. 1 *p*

Fl. 2 *p*

Ob. 1 *p*

Ob. 2 *p*

Cl. in Bb *p*

Bass Cl. in Bb *p*

Bsn. *p*

D. Bsn.

Hn. 1/3 in F *f*

Hn. 2/4 in F *f*

Tpt. 1/2 *mf*

Tbn. 1/2 *mf*

Bass Tbn. *mf*

Perc. 1 *mp*

Perc. 2

Solo Tuba

68

Vln. I *f* *diminuendo* *pp* *f* *diminuendo*

Vln. II *f* *diminuendo* *pp* *f* *diminuendo*

Vln. I *f* *diminuendo* *pp* *f* *diminuendo*

Vln. II *f* *diminuendo* *pp* *f* *diminuendo*

Vla. I *f* *diminuendo* *pp* *f* *diminuendo*

Vla. II *f* *diminuendo* *pp* *f* *diminuendo*

Vcl. I *f* *diminuendo* *pp* *f* *diminuendo*

Vcl. II *f* *diminuendo* *pp* *f* *diminuendo*

D.B.



73 G

Fl. 1

Fl. 2

Ob. 1

Ob. 2

Cl. in Bb

Bass Cl. in Bb

Bsn.

D. Bsn.

Hn. 1/3 in F

Hn. 2/4 in F

Tpt. 1/2

Tbn. 1/2

Bass Tbn.

Perc. 1

Perc. 2

Solo Tuba

73 G

Vln. I

Vln. II

Vln. 2

Vln. 1

Vln. 2

Vla.

Vcl.

I

II

D.B.

78

Fl. 1

Fl. 2

Ob. 1

Ob. 2

Cl. in Bb

Bass Cl. in Bb

Bsn.

D. Bsn.

Hn. 1/3 in F

Hn. 2/4 in F

Tpt. 1/2

Tbn. 1/2

Bass Tbn.

Perc. 1

Perc. 2

Solo Tuba

78

Vln. I

Vln. II

Vln. 1

Vln. 2

Vla. I

Vla. II

Vcl. I

Vcl. II

D.B.

83

Fl. 1 *mp* 3 *pp* *p* 3 *pp* *mf*

Fl. 2 *mp* 3 *pp* *p* 3 *pp* *mf* 3

Ob. 1 *mp* 3 *pp* *mf*

Ob. 2 *mp* 3 *pp* *p* *mf*
All trills: a minor second

Cl. in Bb *mp* 3 *pp* *mf*

Bass Cl. in Bb *mf*

Bsn. *mf*

D. Bsn. *f*

Hn. 1/3 in F *pp* *f*

Hn. 2/4 in F *mf*

Tpt. 1/2

Tbn. 1/2

Bass Tbn.

Perc. 1

Perc. 2

Solo Tuba *f*

83

Vln. I *f* *mf* arco

Vln. II *f* *mf* arco

Vln. 2 I *f* *mf* arco

Vln. 2 II *f* *mf* arco

Vla. I *mp* 7 *crescendo* 7 *f* *mf* arco pizz.

Vla. II *mp* 7 *crescendo* 7 *f* *mf* arco pizz.

Vcl. I *f* *mf* arco

Vcl. II *f* *mf* arco

D.B. *f* pizz. *f*

I

Fl. 1 *mp*

Fl. 2 *mp*

Ob. 1

Ob. 2

Cl. in Bb *mp*

Bass Cl. in Bb *mp*

Bsn. *mf*

D. Bsn. *mf*

Hn. 1/3 in F *mp*

Hn. 2/4 in F *mp*

Tpt. 1/2

Tbn. 1/2 *mp*

Bass Tbn. *mp*

Perc. 1

Perc. 2 *mp*

Solo Tuba *mf*

5/4

I

Vln. I *mp*

Vln. II *mp*

Vln. 1 *mp*

Vln. 2 *mp*

Vla. I *mf*

Vla. II *mf*

Vcl. I *mf*

Vcl. II *mf*

D.B. *mf*

pizz.

arco

5/4

97

Fl. 1

Fl. 2

Ob. 1

Ob. 2

Cl. in Bb

Bass Cl. in Bb

Bsn.

D. Bsn.

Hn. 1/3 in F

Hn. 2/4 in F

Tpt. 1/2

Tbn. 1/2

Bass Tbn.

Perc. 1

Perc. 2

Solo Tuba

Vln. I

Vln. II

Vln. I

Vln. II

Vla.

Vla.

Vcl. I

Vcl. II

D.B.

Str. mute

pp

f

fp

mf

pizz.

mp

NB noter
This music is copyright protected

Poco accel.

J Allegro mod.

102

Fl. 1

Fl. 2

Ob. 1

Ob. 2

Cl. in Bb

Bass Cl. in Bb

Bsn.

D. Bsn.

Hn. 1/3 in F

Hn. 2/4 in F

Tpt. 1/2

Tbn. 1/2

Bass Tbn.

Perc. 1

Perc. 2

Solo Tuba

Poco accel.

J Allegro mod.

102

Vln. I

Vln. II

Vln. 1

Vln. 2

Vla. I

Vla. II

Vcl. I

Vcl. II

D.B.

110

Fl. 1 *mp* *mf*

Fl. 2 *mp* *mf*

Ob. 1 *f*

Ob. 2 *f*

Cl. in Bb

Bass Cl. in Bb

Bsn. *mf*

D. Bsn. *mf*

Hn. 1/3 in F

Hn. 2/4 in F

Tpt. 1/2

Tbn. 1/2

Bass Tbn.

Perc. 1

Perc. 2

Solo Tuba *f*

110

Vln. I *mf*

Vln. II *mf*

Vln. 2 I *mf*

Vln. 2 II *mf*

Vla. I *f*

Vla. II *f*

Vcl. I *f*

Vcl. II *f*

D.B. *f* pizz.

Fl. 1 *f* *pp* *f*

Fl. 2 *f* *pp* *f*

Ob. 1 *pp* *f*

Ob. 2 *pp* *f*

Cl. in Bb *f* *pp* *f*

Bass Cl. in Bb *pp* *f*

Bsn. *f* *pp* *f*

D. Bsn. *f*

Hn. 1/3 in F *f* *pp* *f* *p* *f* *p*

Hn. 2/4 in F *f* *mp* *f* *p*

Tpt. 1/2 *p* *f*

Tbn. 1/2

Bass Tbn.

Perc. 1 *Gl. sp.*

Perc. 2

Solo Tuba *p*

Vln. I *mf* *f*

Vln. II *mf* *f*

Vla. I *mp* *f*

Vla. II *mp* *f*

Vcl. I *mp* *f*

Vcl. II *mp* *f*

D.B. *arco* *mp* *f*

Fl. 1

Fl. 2

Ob. 1

Ob. 2

Cl. in Bb

Bass Cl. in Bb

Bsn.

D. Bsn.

Hn. 1/3 in F

Hn. 2/4 in F

Tpt. 1/2

Tbn. 1/2

Bass Tbn.

Perc. 1

Perc. 2

Solo Tuba

Xyloph.

p

pp

ppp

2nd: Str. mute

6/4

5/4

119

Vln. I

Vln. II

Vln. 1

Vln. 2

Vla. I

Vla. II

Vcl. I

Vcl. II

D.B.

pp

ppp

6/4

5/4

L Quasi recit., (♩=60)

Fl. 1 *ff*

Fl. 2 *ff*

Ob. 1 *ff*

Ob. 2 *ff*

Cl. in Bb *pp*

Bass Cl. in Bb *pp*

Bsn. *pp*

D. Bsn.

Hn. 1/3 in F

Hn. 2/4 in F

Tpt. 1/2 *ff* Open a2 5

Tbn. 1/2

Bass Tbn.

Perc. 1 *ff*

Perc. 2

Solo Tuba *mp dolce*

L Quasi recit., (♩=60)

Vln. I *ff*

Vln. II *ff*

Vln. 1 *ff*

Vln. 2 *ff*

Vla. I *ppp* *divisi*

Vla. II *ppp*

Vcl. I *ppp* *divisi*

Vcl. II *ppp*

D.B. *ppp*

130

J-104 J-60 J-104 M J-60 J-104

Fl. 1 *ff*

Fl. 2 *ff*

Ob. 1 *ff*

Ob. 2 *ff*

Cl. in Bb *ff*

Bass Cl. in Bb

Bsn. *mp*

D. Bsn. *f*

Hn. 1/3 in F *pp*

Hn. 2/4 in F *pp*

Tpt. 1/2 *ff*

Tbn. 1/2 *ff*

Bass Tbn. *ff*

Perc. 1 *ff* Temple bl

Perc. 2 *ff* Timp

Solo Tuba *mp* *f* *mp*

J-104 J-60 J-104 M J-60 J-104

Vln. I *pp*

Vln. II *pp*

Vln. 1 *pp*

Vln. 2 *pp*

Vla. I *pp*

Vla. II *pp*

Vcl. I *pp*

Vcl. II *pp*

D.B. *pp*

Fl. 1

Fl. 2

Ob. 1

Ob. 2

Cl. in Bb

Bass Cl. in Bb

Bsn.

D. Bsn.

Hn. 1/3 in F

Hn. 2/4 in F

Tpt. 1/2

Tbn. 1/2

Bass Tbn.

Perc. 1

Perc. 2

Solo Tuba

Vln. I

Vln. II

Vln. 1

Vln. 2

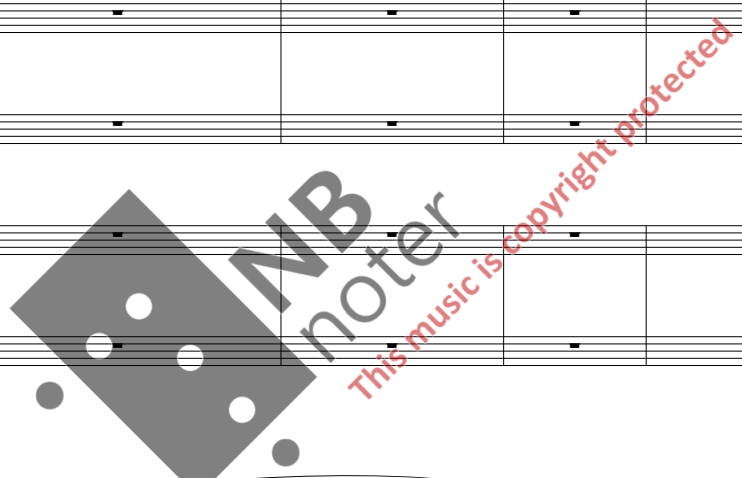
Vla. I

Vla. II

Vcl. I

Vcl. II

D.B.



Fl. 1 *mf* *mp*

Fl. 2 *mf* *mp*

Ob. 1 *f* *mf* *mp*

Ob. 2 *f* *mf* *mp*

Cl. in Bb

Bass Cl. in Bb

Bsn.

D. Bsn.

Hn. 1/3 in F Open *mf* *f*

Hn. 2/4 in F Open *mf* *f*

Tpt. 1/2 *f* Hrn. mute (T.I.)

Tbn. 1/2 Cup mute *mf*

Bass Tbn. Cup mute *mf*

Perc. 1

Perc. 2

Solo Tuba

Vln. I *mf non legato* *ff* *mf* *pp* Sul tasto

Vln. II *mf non legato* *ff* *mf* *pp* Sul tasto

Vln. I *mf non legato* *ff* *mf* *pp* Sul tasto

Vln. II *mf non legato* *ff* *mf* *pp* Sul tasto

Vla. I *ff non legato* *mf* *ff* *mf* *pp* Sul tasto

Vla. II *ff non legato* *mf* *ff* *mf* *pp* Sul tasto

Vcl. I *ff non legato* *mf* *ff* *mf* *pp* Sul tasto

Vcl. II *ff non legato* *mf* *ff* *mf* *pp* Sul tasto

D.B. *pp* Sul tasto

FL. 1

FL. 2

Ob. 1

Ob. 2

Cl. in Bb

Bass Cl. in Bb

Bsn.

D. Bsn.

Hn. 1/3 in F

Hn. 2/4 in F

Tpt. 1/2

Tbn. 1/2

Bass Tbn.

Perc. 1

Perc. 2

Solo Tuba

I

Vln. I

II

Vln. II

I

Vla.

II

I

Vcl.

II

D.B.

Fl. 1

Fl. 2

Ob. 1

Ob. 2

Cl. in Bb

Bass Cl. in Bb

Bsn.

D. Bsn.

Hn. 1/3 in F

Hn. 2/4 in F

Tpt. 1/2

Tbn. 1/2

Bass Tbn.

Perc. 1

Perc. 2

Solo Tuba

162

Vln. I

Vln. II

Vln. I

Vln. II

Vla. I

Vla. II

Vcl. I

Vcl. II

D.B.

P J-104

Ritard.

Fl. 1 *f marcato*

Fl. 2 *f marcato*

Ob. 1 *f marcato*

Ob. 2 *f marcato*

Cl. in Bb *f marcato*

Bass Cl. in Bb *mp*

Bsn. *mp*

D. Bsn. *pp* *p* *f*

Hn. 1/3 in F

Hn. 2/4 in F

Tpt. 1/2

Tbn. 1/2

Bass Tbn.

Perc. 1 *f* Bass dr. (light timp. sticks) *f*

Perc. 2 Timp. *ppp* *p* *f*

Solo Tuba *mf* *f* *mf*

P J-104

Ritard.

Vln. I *f* *spicc.* *p* *mp* *mf* *f*

Vln. II *f* *spicc.* *p* *mf* *f*

Vln. 2 I *ord. spicc.* *f* *p* *f* *pizz.* *f*

Vln. 2 II *ord.* *f* *pizz.* *f*

Vla. I *mp* *ord.* *mf* *f* *pizz.* *f*

Vla. II *mp* *ord.* *mf* *f* *pizz.* *f*

Vcl. I *mp* *ord.* *mf* *f* *pizz.* *f*

Vcl. II *mp* *ord.* *mf* *f* *pizz.* *f*

D.B. *mp* *ord.* *mf* *pp* *gliss. lento* *f*

174 Q Moderato, ♩ = 88

Fl. 1

Fl. 2

Ob. 1

Ob. 2

Cl. in Bb

Bass Cl. in Bb

Bsn.

D. Bsn.

Hn. 1/3 in F

Hn. 2/4 in F

Tpt. 1/2

Tbn. 1/2

Bass Tbn.

Perc. 1

Perc. 2

Solo Tuba

I

Vln. I

II

Vln. II

I

Vla.

II

I

Vcl.

II

D.B.

Slap stick

Cymbal

(snare dr. stick)

pp, *ff*, *f*, *ff*, *pp*, *ff*, *pp*, *ff*, *pp*, *ff*, *pp*, *ff*

Str. mute

Loco



181

Fl. 1

Fl. 2 To Piccolo

Ob. 1

Ob. 2

Cl. in Bb

Bass Cl. in Bb

Bsn.

D. Bsn.

Hn. 1/3 in F

Hn. 2/4 in F

Tpt. 1/2

Tbn. 1/2

Bass Tbn.

Perc. 1 Xyloph.

Perc. 2

Solo Tuba

181

Vln. I

Vln. II

Vln. 1

Vln. 2

Vla. I

Vla. II

Vcl. I

Vcl. II

D.B.

R

pp

p

pp

mp

p

ff

mf

This music is copyright protected

To Piccolo

Fl. 1

Fl. 2

Ob. 1

Ob. 2

Cl. in Bb

Bass Cl. in Bb

Bsn.

D. Bsn.

Hn. 1/3 in F

Hn. 2/4 in F

Tpt. 1/2

Tbn. 1/2

Bass Tbn.

Perc. 1

Perc. 2

Solo Tuba

Vln. I

Vln. II

Vla. I

Vla. II

Vcl. I

Vcl. II

D.B.

1st: Open

(Muted)

Timp. (hard sticks)

f Ped. gliss.

Quasi ped. gliss.

(flutter)

loco

This music is copyright protected

S Poco lento, $\text{♩} = 60$

Picc.

Picc.

Ob. 1

Ob. 2

Cl. in Bb

Bass Cl. in Bb

Bsn.

D. Bsn.

Hn. 1/3 in F

Hn. 2/4 in F

Tpt. 1/2

Tbn. 1/2

Bass Tbn.

Perc. 1

Perc. 2

Solo Tuba

Xyloph.

Gl.sp.

quasi gliss.

Open

ff

f

mp

mf

pp

p

f

pp

p

f

pp

p

f

ff

p

mf

f

mp

ff

f

S Poco lento, $\text{♩} = 60$

Vln. I

Vln. II

Vln. I

Vln. II

Vla. I

Vla. II

Vcl. I

Vcl. II

D.B.

Sul pont.

pp crescendo

f

ord.

p

mf

pp

f

ord.

p

mf

pp

f

ord.

p

mf p

pp

f

ord.

p

mf p

f

gliss.

f

ord.

p

mf p

p

mf p

p

mf p

p

mf p

T

Picc. *p*

Ob. 1 *mp* *mf* *mp*

Ob. 2

Cl. in Bb *mf*

Bass Cl. in Bb *mf*

Bsn. *mp*

D. Bsn.

Hn. 1/3 in F *f* *mp* 1st:

Hn. 2/4 in F *f*

Tpt. 1/2

Tbn. 1/2

Bass Tbn.

Perc. 1 *mf* *p*

Perc. 2 *mp* Metal chimes

Solo Tuba

T

200

Vln. I *p* *gliss.*

Vln. II *p* *gliss.*

Vln. I *p* *gliss.*

Vln. II *p* *gliss.*

Vla. I *p* *gliss.*

Vla. II *p* *gliss.*

Vcl. I *p* *gliss.*

Vcl. II *p* *gliss.*

D.B. *p* *gliss.*

Score for Percussion, Brass, and Strings, measures 204-208.

Percussion: Perc. 1 (Metal chimes), Perc. 2 (*p*), Solo Tuba (*mf*).

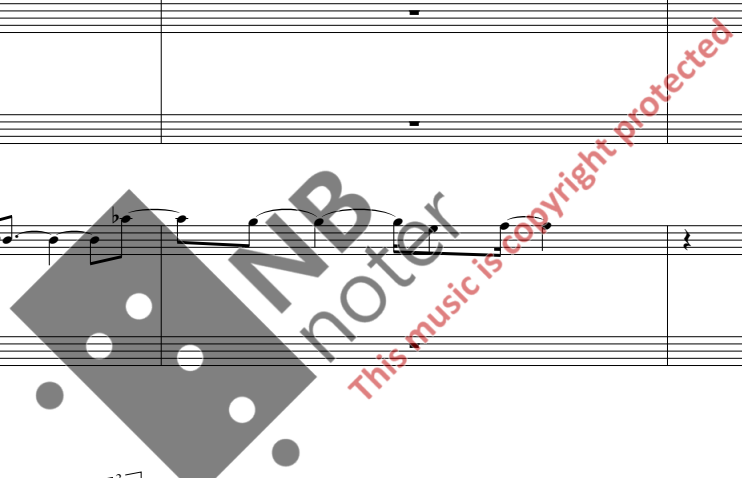
Brass: Picc. (*mp*), Ob. 1 (*p*), Ob. 2 (*mp*), Bsn. (*mp*), D. Bsn. (*mf*), Hn. 1/3 in F, Hn. 2/4 in F, Tpt. 1/2, Tbn. 1/2, Bass Tbn.

Strings: Vln. I & II, Vla. I & II, Vcl. I & II, D.B.

Measures 204-205: Picc. and Ob. 1/2 play sixteenth-note patterns. Solo Tuba has a melodic line. Perc. 2 plays a low-pitched pattern.

Measures 206-207: Picc. and Ob. 1/2 continue with rhythmic patterns. Solo Tuba continues its melodic line. Perc. 2 is silent.

Measure 208: Picc. and Ob. 1/2 play a final rhythmic pattern. Solo Tuba ends with a note. Perc. 2 plays a final pattern.



U J-52

J-60

Picc. *ff*

Ob. 1 *f*

Ob. 2 *f*

Cl. in Bb *f* *p* *p* *mp*

Bass Cl. in Bb

Bsn.

D. Bsn. *p*

Hn. 1/3 in F

Hn. 2/4 in F

Tpt. 1/2 *ff*

Tbn. 1/2

Bass Tbn.

Perc. 1 *f* *p* *p* *p*

Perc. 2

Solo Tuba *f* *mp*

Vln. I *p*

Vln. II *p*

Vln. 2 *p*

Vln. 2 *p*

Vla. *p*

Vcl. *p*

D.B. *p*

Str. mute
a2

Xyloph.

GLsp.

6

3

3

3

6

5

6

5

3

8va

8va

divisi

214

Picc. *p*

Picc. *p*

Ob. 1 *mp*

Ob. 2 *mp*

Cl. in Bb *p*

Bass Cl. in Bb *p*

Bsn. *mp*

D. Bsn. *p*

Hn. 1/3 in F

Hn. 2/4 in F

Tpt. 1/2 *f*

Tbn. 1/2 *mp*

Bass Tbn.

Perc. 1 *mf*

Perc. 2 *p*

Solo Tuba *f*

To Flute

To Flute

Metal chimes

NB noter

This music is copyright protected

214

Vln. I *pp*

Vln. II *pp*

Vln. 2 I *pp*

Vln. 2 II *pp*

Vla. I *pp*

Vla. II *pp*

Vcl. I *pp*

Vcl. II *pp*

D.B. *pp*

loco

V

Poco agitato

Fl. 1

Fl. 2

Ob. 1

Ob. 2

Cl. in Bb

Bass Cl. in Bb

Bsn.

D. Bsn.

Hn. 1/3 in F

Hn. 2/4 in F

Tpt. 1/2

Tbn. 1/2

Bass Tbn.

Perc. 1

Perc. 2

Solo Tuba

V

Poco agitato

Vln. I

Vln. II

Vln. 1

Vln. 2

Vla. I

Vla. II

Vcl. I

Vcl. II

D.B.

Flute 1 *mp*

Flute 2 *mp*

Ob. 1

Ob. 2

Cl. in Bb *mp*

Bass Cl. in Bb

Bsn.

D. Bsn.

Hn. 1/3 in F *pp* Muted

Hn. 2/4 in F *pp* Muted

Tpt. 1/2 *pp* Str. mute

Tbn. 1/2 *pp* Str. mute

Bass Tbn. *pp* Str. mute

Perc. 1 *f* *mf* *p* *p* Marimba

Perc. 2

Solo Tuba *mp*

225

Vln. I (non trem.) *ppp* *pp* *p* Sul pont. ord.

Vln. II (non trem.) *ppp* *pp* *p* Sul pont. ord.

Vln. 2 I (non trem.) *ppp* *pp* *p* Sul pont. ord.

Vln. 2 II (non trem.) *ppp* *pp* *p* Sul pont. ord.

Vla. I (non trem.) *ppp* *pp* *p* Sul pont. ord.

Vla. II (non trem.) *ppp* *pp* *p* Sul pont. ord.

Vcl. I (non trem.) *ppp* *pp* *p* Sul pont. ord.

Vcl. II (non trem.) *ppp* *pp* *p* Sul pont. ord.

D.B. *ppp* *pp* *p* Sul pont. ord.

Fl. 1

Fl. 2

Ob. 1

Ob. 2

Cl. in Bb

Bass Cl. in Bb

Bsn.

D. Bsn.

Hn. 1/3 in F

Hn. 2/4 in F

Tpt. 1/2

Tbn. 1/2

Bass Tbn.

Perc. 1

Perc. 2

Solo Tuba

ppp

pp

mp

p

Cup mute
a2 (trill = 1st only)

Vln. 1

Vln. 2

Vla.

Vcl.

D.B.

ppp

divisi

ord.

arco

Suono reale

Fl. 1 *pp*

Fl. 2 *pp*

Ob. 1

Ob. 2 *pp*

Cl. in Bb

Bass Cl. in Bb *ppp* *p* *p* *pp*

Bsn. *ppp* *p* *p* *pp*

D. Bsn.

Hn. 1/3 in F

Hn. 2/4 in F

Tpt. 1/2 *pp* simile

Tbn. 1/2

Bass Tbn.

Perc. 1

Perc. 2

Solo Tuba *mp*

242

Vln. 1 I II

Vln. 2 I II

Vla. I II

Vcl. I II

D.B.

Lento molto

Fl. 1 *pp* *mp* *mf*

Fl. 2 $\frac{5}{4}$ $\frac{4}{4}$ *mp* *mf* *mf*

Ob. 1

Ob. 2

Cl. in Bb *pp* *mp* *mf*

Bass Cl. in Bb

Bsn.

D. Bsn.

Hn. 1/3 in F $\frac{5}{4}$ $\frac{4}{4}$ *pp* *mp* a2 (Muted)

Hn. 2/4 in F *pp* *mp* a2 (Muted)

Tpt. 1/2

Tbn. 1/2

Bass Tbn.

Perc. 1

Perc. 2

Solo Tuba $\frac{5}{4}$ $\frac{4}{4}$

253

Vln. I *pp espress.* *mp* *mf*

Vln. II *pp espress.* *mp* *mf*

Vln. 2 I *pp espress.* *mp* *mf*

Vln. 2 II *pp espress.* *mp* *mf*

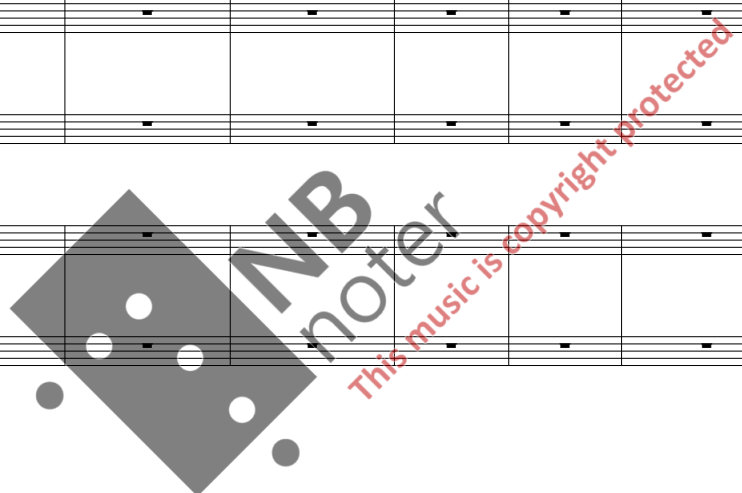
Vla. I $\frac{5}{4}$ $\frac{4}{4}$ *pp espress.* *mp* *mf*

Vla. II *pp espress.* *mp* *mf*

Vcl. I *pp espress.* *mp* *mf*

Vcl. II *pp espress.* *mp* *mf*

D.B.



Fl. 1

Fl. 2

Ob. 1

Ob. 2

Cl. in Bb

Bass Cl. in Bb

Bsn.

D. Bsn.

Hn. 1/3 in F

Hn. 2/4 in F

Tpt. 1/2

Tbn. 1/2

Bass Tbn.

Perc. 1

Perc. 2

Solo Tuba

266

X J-56

Vln. I

Vln. II

Vln. 2

Vln. 1

Vln. 2

Vla.

Vcl.

D.B.

Fl. 1

Fl. 2

Ob. 1

Ob. 2

Cl. in Bb

Bass Cl. in Bb

Bsn.

D. Bsn.

Hn. 1/3 in F

Hn. 2/4 in F

Tpt. 1/2

Tbn. 1/2

Bass Tbn.

Perc. 1

Perc. 2

Solo Tuba

272

Vln. 1

Vln. 2

Vla.

Vel.

D.B.

276 (flutter) **ff** **Ritard.**

Fl. 1 (flutter) **ff**

Fl. 2 (flutter) **ff** double-tongue

Ob. 1

Ob. 2

Cl. in Bb

Bass Cl. in Bb

Bsn.

D. Bsn.

Hn. 1/3 in F

Hn. 2/4 in F

Tpt. 1/2 Str. mute **ff**

Tbn. 1/2 **ff**

Bass Tbn. **ff**

Perc. 1

Perc. 2 Cymbal (beat on dome) **ff**

Solo Tuba **ff**

276 **ff** **Ritard.**

Vln. I *marcato* **ff** 8^{va} gliss.

Vln. II *marcato* **ff** 8^{va} gliss.

Vln. 2 I *marcato* **ff** 8^{va} gliss.

Vln. 2 II *marcato* **ff** 8^{va} gliss.

Vla. I **ff**

Vla. II **ff**

Vcl. I **ff**

Vcl. II **ff**

D.B. *sul D* **ff** If no extension play 8va

